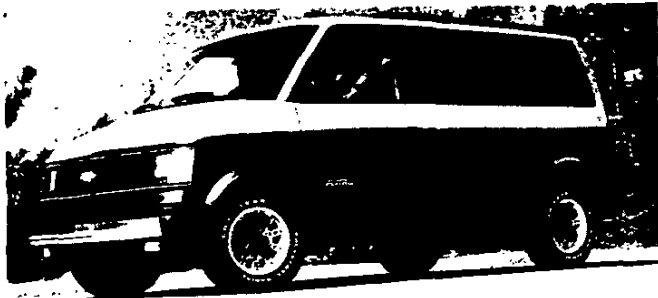
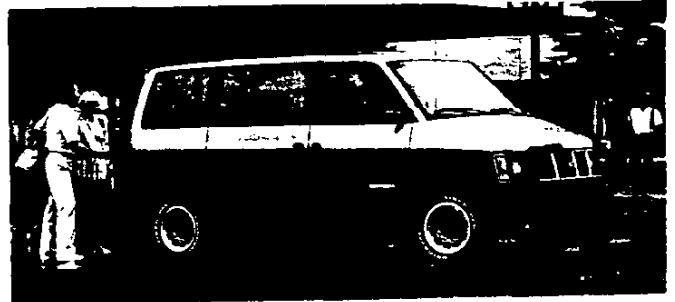
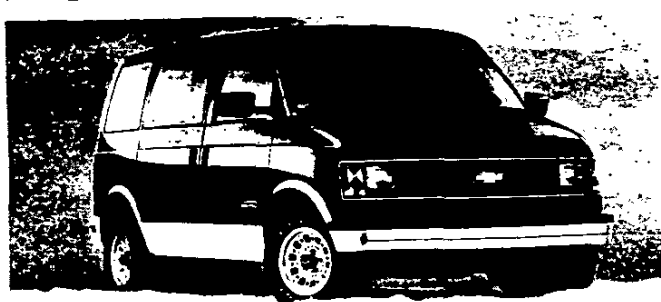


ASTRO/SAFARI PASSENGER VAN


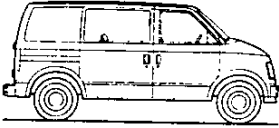



CONTENTS

	<u>Page</u>
MODEL SELECTION	2
ASTRO CS/SAFARI SLX	3
ASTRO CL/SAFARI SLE	4
ASTRO LT/SAFARI SLT TOURING MODEL	5
POWERTEAMS	6
SPECIFICATIONS	7
OPTIONAL EQUIPMENT	12
FEATURES TO SELL	15
COLOR AND TRIM	16
TRAILERING	22

MODELS

KEY: RED PRINT INDICATES NOT AVAILABLE IN CALIFORNIA
 BOLD PRINT INDICATES NOT AVAILABLE W/HIGH ALTITUDE EMISSIONS

PASSENGER VAN							
ASTRO CS/SAFARI SLX PASSENGER VAN (ZW9)	WB	GVWR RANGE	MAX' PAYLOAD	PASS. CAP.	STD ENGINE/TRANS	OPT ENGINE/TRANS	MODEL NUMBER
	111	5600	1300	5 7 8	4.3L V6/M5	4.3L V6/A4	M10906 (ZW9)
ASTRO CL/SAFARI SLE PASSENGER VAN (YC6)	WB	GVWR RANGE	MAX' PAYLOAD	PASS. CAP.	STD ENGINE/TRANS	OPT ENGINE/TRANS	MODEL NUMBER
	111	5600	1250	5 7 8	4.3L V6/M5	4.3L V6/A4	M10906 (YC6)
ASTRO LT/SAFARI SLT PASSENGER VAN (YC7)	WB	GVWR RANGE	MAX' PAYLOAD	PASS. CAP.	STD ENGINE/TRANS	OPT ENGINE/TRANS	MODEL NUMBER
	111	5600	1200	5 7 8	4.3L V6/M5	4.3L V6/A4	M10906 (YC7)

ASTRO CS/SAFARI SLX (ZW9)
 The Astro CS/Safari SLX is the standard passenger van model. It is offered in a 5600-lb. GVWR with a choice of seating configurations.

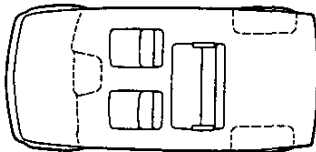
ASTRO CL/SAFARI SLE (YC6)
 The Astro CL/Safari SLE model offers a 5600-lb. GVWR, a choice of seating configurations and additional trim, comfort and convenience features when compared to the Astro CS/Safari SLX model.

ASTRO LT/SAFARI SLT (YC7)
 The Astro LT/Safari SLT model offers a 5600-lb. GVWR, a choice of seating configurations and additional trim, comfort and convenience features when compared to the Astro CL/Safari SLE model.

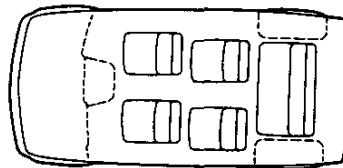
*Total available for cargo and equipment.

ASTRO/SAFARI PASSENGER VAN SEATING ARRANGEMENTS

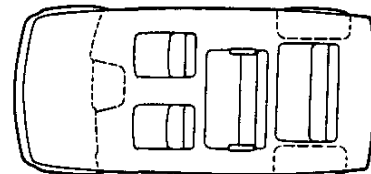
STANDARD: 5-PASSENGER (ZP5)



OPTIONAL: 7-PASSENGER (ZP7)



OPTIONAL: 8-PASSENGER (ZP8)



ASTRO/SAFARI PASSENGER VAN TRIM LEVELS

CS/SLX

The Astro/Safari Passenger Van line consists of three models—CS/SLX, CL/SLE and LT/SLT. Each model features a specific trim available only on that model. The Astro CS/Safari SLX is the standard model available in the Astro/Safari Passenger Van Line. It offers a high level of equipment designed to meet the needs of compact passenger van prospects.

CL/SLE

The optional Astro CL/Safari SLE model offers increased comfort and convenience features compared to the standard Astro CS/Safari SLX model.

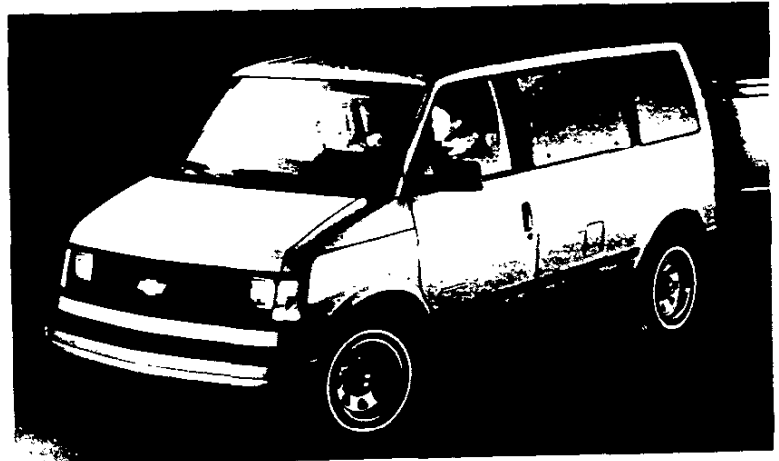
LT/SLT

The optional Astro LT/Safari SLT trim level emphasizes luxury and style. It is the top-of-the-line trim level for the buyer demanding maximum comfort and convenience in a compact passenger van.

ASTRO CS/ SAFARI SLX

The CS/SLX trim level is the standard trim level of the Astro/Safari series. It is designed to offer buyers a high level of standard features when purchasing a standard-level vehicle.

The following features are standard:



Some equipment shown may be optional or extra cost.

POWERTEAM/CHASSIS

- 4.3-liter V6 engine with Electronic Fuel Injection (EFI) is standard. It produces 150 net horsepower @ 4000 rpm and 230 lb. ft. of net torque @ 2400 rpm.
- Dual electric high-note and low-note horn.
- Floor-mounted 5-speed manual overdrive transmission.

- Front suspension is an independent coil spring design.
- Rear suspension is a variable-rate leaf spring design.
- Power front disc brakes and rear-wheel anti-lock brake system.

- Power steering.
- Integral body frame design with boxed-section front stub frame.
- 27 gallon fuel tank.

EXTERIOR

- Front and rear bumpers painted lower body color.
- Bright Astro/Safari nameplates
- Molded plastic grille painted black.
- Black painted window pillars.

- Bright metal hub caps with black trim.
- Wheels painted argent.
- All-season steel-belted radial tires.
- Compact spare tire and wheel.

- RH and LH black-painted mirrors with pivoting arm and adjustable heads.
- Tools include screw-operated scissor-type jack with ratchet handle, extension and two wheel blocks.
- Hot melt wax on entire underbody.

INTERIOR

- RH and LH armrests.
- Color-keyed vinyl door trim panels with front-door map pockets.
- Front high-back adjustable bucket seats with all-vinyl trim, plus center removable 3-passenger bench seat.
- Two LH and one RH side coat hooks.
- Latex foam rubber door seals.
- Black plastic door sill plates.
- Two dome lamps with front door-actuated switches.

- Floor covering consists of embossed, color-keyed rubber mats on entire floor area.
- LH and RH color-keyed cloth sunshades with RH visor mirror.
- Gages include speedometer, odometer, fuel level, voltmeter, oil pressure, coolant temperature and trip odometer.
- Remote release for fuel filler door.
- 4-spoke steering wheel with anti-theft locking features.

- Spare tire carrier under floor.
- Deluxe heater and defogger with side window defogger.
- Molded, color-keyed plastic storage compartment in LH rear quarter area.
- Full-length, color-keyed, foam-backed cloth headliner.
- Stowage box including beverage holder in front face of engine cover extension.

TRIM LEVELS

ASTRO CL/ SAFARI SLE

The CL/SLE trim level is an optional trim level for the Astro/Safari series. It is designed to offer buyers an increased level of comfort and convenience features compared to the standard CS/SLX trim level.

The following features are standard. Bold type denotes equipment in addition to or replacing that of the CS/SLX trim level:



Some equipment shown may be optional or extra cost.

POWERTEAM/CHASSIS

- 4.3-liter V6 engine with Electronic Fuel Injection (EFI) is standard. It produces 150 net horsepower @ 4000 rpm and 230 lb. ft. of net torque @ 2400 rpm.
- Dual electric high-note and low-note horn.
- Floor-mounted 5-speed manual overdrive transmission.
- Front suspension is an independent coil spring design.
- Rear suspension is a variable-rate leaf spring design.
- Power front disc brakes and rear-wheel anti-lock brake system.
- Power steering.
- Integral body frame design with boxed-section front stub frame.
- 27 gallon fuel tank.

EXTERIOR

- Front and rear bumpers painted with **matching color-keyed end caps, rub strips and rear black combination top step surface.**
- Bright Astro/Safari nameplates
- Molded black plastic grille with **argent paint on feature surfaces.**
- **Black body side moldings and wheel opening moldings.**
- Black painted window pillars.
- **Bright wheel covers.**
- All-season steel-belted radial tires.
- Compact spare tire and wheel.
- RH and LH black-painted mirrors with pivoting arm and adjustable heads.
- Tools include screw-operated scissor-type jack with ratchet handle, extension and two wheel blocks.
- Hot melt wax on entire underbody.

INTERIOR

- RH and LH armrests.
- Color-keyed **expanded vinyl door trim panels with carpet inserts and insulation** and front-door map pockets.
- Front high-back adjustable bucket seats with **choice of Custom Vinyl trim or Custom Cloth with vinyl trim**, plus center removable 3-passenger bench seat.
- Two LH and one RH side coat hooks.
- **Cigarette lighter with ashtray light.**
- Latex foam rubber door seals.
- Black plastic door sill plates.
- Two dome lamps with front door, **rear door and sliding door-actuated switches. Also included is a door-jamb defeat switch.**
- Floor covering consists of color-keyed **carpeting** on entire floor area.
- LH and RH color-keyed cloth sunshades with RH visor mirror.
- Gages include speedometer, odometer, fuel level, voltmeter, oil pressure, coolant temperature and trip odometer.
- Remote release for fuel filler door.
- 4-spoke **custom steering wheel** with anti-theft locking features.
- Spare tire carrier under floor.
- Deluxe heater and defogger with side window defogger.
- Molded, color-keyed plastic storage compartment in LH rear quarter area.
- Full-length, color-keyed, foam-backed cloth headliner.
- Stowage box **with light** including beverage holder in front face of engine cover extension.
- **Headlamp warning chimes.**

ASTRO LT/ SAFARI SLT

The LT/SLT trim level is an optional trim level for the Astro/Safari series. It is designed to offer buyers an increased level of comfort and convenience features compared to the Standard CS/SLX trim level and the optional CL/SLE trim level.

The following features are standard. Bold type denotes equipment in addition to or replacing that of the CL/SLE trim level:



Some equipment shown may be optional or extra cost.

POWERTEAM/CHASSIS

- 4.3-liter V6 engine with Electronic Fuel Injection (EFI) is standard. It produces 150 net horsepower @ 4000 rpm and 230 lb. ft. of net torque @ 2400 rpm.
- Dual electric high-note and low-note horn.
- Floor-mounted 5-speed manual overdrive transmission.

- Front suspension is an independent coil spring design.
- Rear suspension is a variable-rate leaf spring design.
- Power front disc brakes and rear-wheel anti-lock brake system.

- Power steering.
- Integral body frame design with boxed-section front stub frame.
- 27 gallon fuel tank.

EXTERIOR

- Front and rear bumpers painted with color-keyed end caps, rub strips and rear black combination top step surface.
- **Special nameplates on front side door "B" pillars.**
- Molded black plastic grille with argent paint on feature surfaces.
- Black body side moldings and wheel opening moldings

- **Wide, color-keyed, graduated-tone striping at beltline.**
- Black painted window pillars.
- **Rally wheels are argent with Midnight Blue, metallic gold with Carmel Brown (consult Color and Trim section for details).**
- All-season steel-belted radial tires.
- Compact spare tire and wheel.

- RH and LH black-painted mirrors with pivoting arm and adjustable heads.
- Tools include screw-operated scissor-type jack with ratchet handle, extension and two wheel blocks.
- Hot melt wax on entire underbody.

INTERIOR

- LH and RH armrests.
- Color-keyed expanded vinyl door trim panels with carpet inserts and insulation and front-door map pockets.
- **Special front bucket seats with reclining backs, folding integral armrests, and full-width adjustable headrests. Split-back center seat includes fold-down center console with convenience tray and cup pockets. RH seat-back folds forward for easy access to rear. All seats are trimmed with special velour fabric.**
- Two LH and one RH side coat hooks.

- Cigarette lighter with ashtray light.
- Latex foam rubber door seals.
- **Color-keyed door sill plates and scuff plates.**
- Two dome lamps with front door, rear door and sliding door-actuated switches. Also included is a door-jamb defeat switch.
- Floor covering consists of color-keyed carpeting on entire floor area.
- LH and RH color-keyed cloth sunshades with RH visor mirror.
- Gages include speedometer, odometer, fuel level, voltmeter, oil pressure, coolant temperature and trip odometer.

- Remote release for fuel filler door.
- **Special luxury sport-type steering wheel with anti-theft locking feature.**
- Spare tire carrier under floor.
- Deluxe heater and defogger with side window defogger.
- Molded, color-keyed plastic storage compartment in LH rear quarter area. **Also, storage pouch with zipper on LH side trim panel.**
- Full-length, color-keyed, foam-backed cloth headliner.
- Stowage box with light including beverage holder in front face of engine cover extension.
- Headlamp warning chimes.

POWERTEAMS

KEY: S STANDARD
 O OPTIONAL
 — NOT OFFERED

RED NOT AVAILABLE W/CALIFORNIA EMISSIONS
 BOLD NOT AVAILABLE W/HIGH ALTITUDE EMISSIONS
 H HIGH ALTITUDE EMISSIONS ONLY
 C CALIFORNIA EMISSIONS ONLY

MODEL ASTRO/SAFARI PASSENGER VAN M10906/ZW9	TRANSMISSION				AXLES					GVWR
	MAN 4-SPD	MAN 5-SPD	AUTO 3-SPD	AUTO 4-SPD	←ECONOMY→		←POWER→			
					2.73	3.08	3.23	3.42	3.73	
ENGINE										
4.3L V6 (LB4)	—	S	—	—	—	S	—	O	—	—
	—	—	—	O	—	—	S	O	O	5600
										5600

1 REQUIRES Z82 TRAILERING EQUIPMENT OPTION

HORSEPOWER AND TORQUE RATINGS (ASTRO/SAFARI PASSENGER VAN)

ORDERING CODE	ENGINES	
	4.3L V6	
	LB4	
SAE NET HORSEPOWER @ RPM	150 @ 4000	
SAE NET TORQUE LB. FT. @ RPM	230 @ 2400	
FUEL SYSTEM	EFI	
CLUTCH SIZE (IN.)	11	
STD. Battery (Cold Cranking Amps @ 0°F)	525	

SPECIFICATIONS

MODEL	ASTRO/SAFARI PASSENGER VAN								
	CS/SLX			CL/SLE			LT/SLT		
	M10906/ZW9			M10906/YC6			M10906/YC7		
SUSPENSION (STD)									
Seating Capacity	5	7	8	5	7	8	5	7	8
Maximum Available Payload (lbs.) ¹	1300			1250			1200		
Total GVWR (lbs.)	5600			5600			5600		
FRONT: GAWR (lbs.)	2700			2700			2700		
REAR: GAWR (lbs.)	2900			2900			2900		
FRONT: Suspension Type	Ind. Coil Spring			Ind. Coil Spring			Ind. Coil Spring		
Standard Spring Capacity (lbs.)	2700			2700			2700		
REAR: Suspension Type	Semi-Elliptic 2-Stage Multi-Leaf			Semi-Elliptic 2-Stage Multi-Leaf			Semi-Elliptic 2-Stage Multi-Leaf		
Standard Spring Capacity (lbs.)	2900			2900			2900		
Leaves Per Spring	1			1			1		
Leaf Total Thickness (in.)	.813			.813			.813		
FRONT: Shock Absorber Piston Diameter (mm)	25			25			25		
REAR: Shock Absorber Piston Diameter (mm)	25			25			25		
FRONT: Axle Type	—			—			—		
Make	—			—			—		
Maximum Capacity (lbs.)	2700			2700			2700		
Standard Hub Locks	—			—			—		
Pinion/Ring Gear Type	—			—			—		
REAR: Axle Type	Semi-Floating			Semi-Floating			Semi-Floating		
Make	GM			GM			GM		
Maximum Capacity (lbs.)	2900			2900			2900		
Pinion/Ring Gear Type	Hypoid			Hypoid			Hypoid		
Ratio	See Powerteams			See Powerteams			See Powerteams		
Standard Tires	Tubeless SBR P205/75R15			Tubeless SBR P205/75R15			Tubeless SBR P205/75R15		
Wheel Size (in.)	15 x 6.00			15 x 6.00			15 x 6.00		
Capacity (lbs. each)	1453			1453			1453		
Bolt Holes	5			5			5		
Bolt Circle Diameter (in.)	5			5			5		
Rim Width (in.)	6.0			6.0			6.0		
Offset (in.)	.5			.5			.5		
Inflation (PSI)	35			35			35		
Revolutions per mile @ 45 MPH	769			769			769		

¹Total available for cargo and equipment

SPECIFICATIONS

MODEL	ASTRO/SAFARI PASSENGER VAN		
	CS/SLX	CL/SLE	LT/SLT
MODEL NUMBER	M10906/ZW9	M10906/YC6	M10906/YC7
STEERING			
Type	Recirc. Ball		
Steering Ratio	24/28:1		
Turning Diameter: Curb-To-Curb (ft.)	39.5		
Wall-To-Wall (ft.)	40.5		
BRAKES			
GVWR	5600		
Type	Vac. Power		
Booster (Diaphragm Diameter)	7.9 x 7.9 Tandem		
Front Rotor Size (Diameter x Thickness)	11.86 x 1.04		
Front Facing Contact Per Axle (sq. in.)	37.63		
Rear Drum Size (Diameter x Width)	9.5 x 2.0		
Rear Facing Contact Per Axle (sq. in.)	63.73		
Parking Brake	Cable To Rear Wheels		

SPECIFICATIONS

MODEL	ASTRO/SAFARI PASSENGER VAN		
	CS/SLX	CL/SLE	LT/SLT
MODEL NUMBER	M10906/ZW9	M10906/YC6	M10906/YC7
ELECTRICAL			
Engine Std./Opt.	4.3 Liter	4.3 Liter	4.3 Liter
Standard Battery: Cold Cranking Amps @ 0°F @ -20°F	525 405	525 405	524 405
Reserve Capacity Minutes @ 80°F	90	90	90
Optional Battery: Cold Cranking Amps @ 0°F @ -20°F	630 490	630 490	630 490
Reserve Capacity Minutes @ 80°F	115	115	115
Auxiliary Battery: Cold Cranking Amps @ 0°F @ -20°F	—	—	—
Reserve Capacity Minutes @ 80°F	—	—	—
Standard Generator: Max. Capacity (Amps)	85	85	85
Max Watts @ 12 Volts	1020	1020	1020
Nominal Amp @ Idle (Approx.)	30	30	30
Drive Pulley Ratio	2.7:1	2.7:1	2.7:1
Model Number	CS130	CS130	CS130
Optional Generator Max. ¹ Capacity (Amps)	100	100	100
Max Watts @ 12 Volts	1200	1200	1200
Nominal Amp @ Idle (Approx)	54	54	54
Drive Pulley Ratio	3.1:1	3.1:1	3.1:1
Model Number	CS130	CS130	CS130

¹Included with optional C80 air conditioning. Not available as a separate option.

SPECIFICATIONS

KEY: REG TYPE MANUAL TRANS AND AUTOMATIC TRANS RED TYPE MANUAL TRANS ONLY
 BOLD TYPE AUTOMATIC TRANS ONLY

MODEL	ASTRO/SAFARI PASSENGER VAN		
	CS/SLX	CL/SLE	LI/SLT
MODEL NUMBER	M10906/ZW9	M10906/YC6	M10906/YC7
STANDARD COOLING SYSTEM			
Engine	4.3L		
Standard Radiator Thickness (in.)	.93		
Total System Cap. (gal.)	3.4		
Standard Fan (No. Blades x Diameter x Pitch)	3 x 18.03 x 2.71		
OPTIONAL COOLING SYSTEMS			
Engine	4.3L		
AUTOMATIC TRANS.	MXO		
Radiator Thickness (in.)	.93		
Total Systems Cap. (gal.)	3.4		
Fan (No. Blades x Diameter x Pitch)	3 x 18 x 2.71		
OPT. AIR CONDITIONING	C60*		
Radiator Thickness (in.)	.93		
Total System Cap. (gal.)	3.4		
Fan (No. Blades x Diameter x Pitch)	5 x 19 x 2.6		
OPT. H.D. RADIATOR AND TRANS. OIL COOLER	VO2#		
Radiator Thickness (in.)	.93		
Total System Cap. (gal.)	3.4		
Fan (No. Blades x Diameter x Pitch)	3 x 18 x 2.71		

* (w/o VO2 Cooling, Incls. VO1 Cooling)

(Reqs. MXO Trans.) (Included w/ Z82 Trailering)

SPECIFICATIONS

MODEL		ASTRO/SAFARI PASSENGER VAN		
		CS/SLX	CL/SLE	LT/SLT
MODEL NUMBER		M10906/ZW9	M10906/YC6	M10906/YC7
EXTERIOR DIMENSIONS				
BODY:				
Wheelbase (in.)		111.0		
Overall Length (in.)		176.8		
Overall Height (in.)		74.1		
Overall Width (in.)		77.0		
Bumper To Axle—Front Rear (in.)		30.6/35.2		
Ground To Top of Load Floor (in.)		24.4		
Ground Clearance FRONT (in.) REAR		6.8 7.7		
SIDE LOAD DOOR:				
Opening Height (in.)		44.5		
Opening Height (in.)		34.5		
REAR LOAD DOOR:				
Opening Height (in.)		44.7		
Opening Width (in.)		57.0		
INTERIOR				
Headroom (in.)	FRONT	39.2		
	MIDDLE	37.9		
	REAR	38.3		
Legroom (in.)	FRONT	41.6		
	MIDDLE	36.5		
	REAR	38.5		
Shoulder Room (in.)	FRONT	64.0		
	MIDDLE	67.8		
	REAR	67.8		
Hip Room (in.)	FRONT	64.9		
	MIDDLE	50.9		
	REAR	50.9		
Load Floor Length (in.)	w/FRONT SEAT	88.9		
	w/MIDDLE SEAT	51.4		
	w/REAR SEAT	24.1		
Interior Height (in.)		47.5		
Interior Width Beltline (in.) Between Wheelhousings		51.6		
Cargo Capacity (cu. ft.)	w/FRONT SEAT	151.8		
	w/MIDDLE SEAT	86.2		
	w/REAR SEAT	22.7		
FUEL TANK				
Std. Tank Nominal (gal.)		27.0		
Location of Tank		Between Frame Rails Forward or Rear Axle		
Location of Filler		Left Side		
Optional Tank Nominal (gal.)		—		
Location of Tank		—		
Location of Filler		—		
VEHICLE WEIGHT (STD MODEL)				
		CL/SLX (ZW9)	CL/SLE (YC6)	LT/SLT (YC7)
CURB WEIGHT (LBS.)	FRONT	2064	2091	2107
	REAR	1522	1546	1576
	TOTAL	3586	3637	3683
MODEL WEIGHT (LBS.)	FRONT	2396	2423	2439
	REAR	1940	1963	1994
	TOTAL	4336	4386	4433

OPTION SELECTION

KEY: S STANDARD
O OPTIONAL
— NOT AVAILABLE

1. Astro CS/Safari SLX (M10906/ZW9)
2. Astro CL/Safari SLE (M10906/YC6)
3. Astro LT/Safari SLT (M10906/YC7)

				MODELS														
				2-WHEEL DRIVE														
				1	2	3												
OPTION	CODE	DESCRIPTION	RESTRICTIONS															
AIR CONDITIONING		w/o V02 Cooling Incls V01 Cooling																
Front	C60	Incl w/C69 Front and Rear Air		O	O	O												
Front and Rear	C69	Incls C60 Front Air		O	O	O												
AIR DAM WITH FOG LAMPS	ANL			O	O	S												
AXLE, REAR	G80	Locking Differential		O	O	O												
BATTERY	UA1	Heavy-Duty 630 Cold Cranking Amps, Delco Freedom	Incl w/V10 Cold Climate Package	O	O	O												
BRACKET, LICENSE PLATE	VK3			O	O	O												
BUMPER EQUIPMENT																		
Bumpers, Deluxe Front and Rear Chromed w/Rub Strip	VE5			O	O	O												
Bumpers, Front and Rear Color-keyed w/Rub Strip	VE6			O	S	S												
CARRIER, LUGGAGE	V54	Black		O	O	O												
CL FEATURE OPTION PACKAGE	YC6	Incls Auxiliary Lighting, Body Side Mldgs, Cigarette Lighter, Color Keyed Carpet on Full Floor, Custom Steering Wheel, Custom Trim, Deluxe Color Keyed Front and Rear Bumpers, Deluxe Grille, Full Wheel Covers		—	O	—												
COOLING SYSTEM																		
Engine Oil	KC4	Incl w/Z82 Cooling	Reqs V01 or V02 Cooling	O	O	O												
Radiator	V01	Incls w/C60 or C69 Air	N/A V02 Cooling	O	O	O												
H.D. Radiator and Transmission Oil	V02	Incl w/Z82 Trailering	Reqs MX0 Trans	O	O	O												
COLD CLIMATE PACKAGE	V10	Incls Eng Block Heater and UA1 Battery		O	O	O												
COMFORTILT STEERING AND SPEED CONTROL	ZQ3			O	O	O												
CONSOLE, ROOF	DK6		Reqs TR9 Lighting	O	O	O												
DOOR LOCK SYSTEM, POWER	AU3	Incl w/ZQ2 Conv Pkg		O	O	O												
FLOOR COVERING																		
Color-Keyed Carpeting, Wheelhousing and Floor Mats, Color-Keyed	B30			O	S	S												
	B37		Reqs B30 Carpeting	O	O	O												
GLASS ARRANGEMENTS	ZW6	Complete Body		O	O	O												
GLASS, SWING-OUT	A18	Rear Doors		O	O	S												
GLASS TINTING																		
Deep Tinted	AJ1		N/A A01, A02 or AA3 Glass	O	O	O												
Deep Tinted with Light Tinted Rear Door Windows	AA3		N/A AJ1, A01 or A02 Glass	O	O	O												
Tinted, All Windows	A01		N/A A02, AA3 or AJ1 Glass	O	O	O												
Tinted, Windshield Only	A02			O	O	O												

ASTRO/SAFARI PASSENGER VAN

Customers who want a compact passenger van will appreciate the full size power, room and features the Astro/Safari offers.

POWERTEAM LINEUP

Astro/Safari's available powerteams offer drivers few choices but plenty of power. The standard Vortec 4.3L V6 engine with Electronic Fuel Injection (EFI) is a powerful engine and a powerful selling feature in the Astro/Safari. Electronic Fuel Injection, which eliminates the carburetor, is constantly computer-tuned to compensate for changes in weather and operating conditions. The engine also incorporates electronic spark control that adjusts timing to control engine knock under heavy loads. The standard engine is complemented by a standard economical 5-speed manual transmission with overdrive. A 4-speed automatic with overdrive for shifting ease is optional. And, to round out the powerteam selections, Astro/Safari provides four rear axle ratios, ranging from the fuel-efficient 3.08 to 3.73 for more torque.

SEATING VERSATILITY

Versatility describes Astro/Safari's seating capabilities perfectly. Five-passenger seating is standard, with optional seating choices that accommodate from five to eight passengers. A center 3-passenger bench is also standard seating. Add the optional third seat and capacity increases to eight. Order the optional high-back bucket seats for front and middle seating positions, for a total seating capacity of seven (including the optional 3-passenger rear seat). And there's even more versatility. Fold the middle and/or rear seat-backs down to create a flat loading surface or remove the second and third seats to open up a large load space of 151.8 cu. ft.

SURE STOPPING POWER

One of the newest technologies to show up in vehicles like Corvette, C/K Pickups and now Astro/Safari is the Rear Wheel Anti-Lock Braking System (ABS). Tell prospects how the rear-wheel anti-lock brake system is designed to help control rear-wheel

lockup during severe braking applications, regardless of the load. Whenever braking occurs, a microcomputer-based electronic unit monitors the rate of slowdown of the rear wheels. If the rear wheels spin down too quickly, the computer regulates rear brake line pressure through a set of control valves. By regulating brake line pressure, rear tires remain in rolling contact with the road surface. As a result, the truck maintains its directional stability even during hard braking.

SMOOTH RIDE AND SURE HANDLING

Astro/Safari provides a smooth, controlled ride due to many features. For instance, tell prospects that the independent front coil springs are computer-selected for ride optimization. At the rear, tell prospects about the variable-rate, fiberglass composite monoleaf rear springs that adjust to varying load weight and also help provide a smooth ride. Astro/Safari offers standard power steering that dampens road shocks and steering wheel vibration for extra comfort and handling ease.

BUILT-IN BODY AND FRAME STRENGTH

People will be impressed by Astro/Safari's good looks, but when they want to know how sturdy it is tell them about the integral body-frame design that joins the time-tested ladder-type frame components with floor panels. Advantage to owners? The design reduces total vehicle weight, allowing more payload capacity, while adding structural rigidity and load support. Contributing to this rigidity, single-piece stampings are used for the underbody structure, right and left side panels, roof panel and front end to decrease the amount of seams and areas where corrosion can start.

ADVANCED DESIGN TECHNIQUES

Astro/Safari is a result of many design considerations that can benefit your prospects. Point them out. Its compact size spells driving and parking maneuverability, and garageability.

You can show aerodynamic features like the flush-mounted glass, recessed door handles, hidden drip moldings and the front air dam that make the van "slippery" for enhancing fuel economy at highway speeds and reducing wind noise. Show the step wells that are part of the floor, allowing easy entry and exit. At the rear, you might point out the standard rear step bumper that allows convenient passenger movement and aids cargo handling. Also, Astro/Safari is a rear wheel drive vehicle, putting the driving wheels more directly under the rear passenger or cargo load.

INTERIOR COMFORT AND CONVENIENCE

Comfort and luxury are two features that consumers will notice immediately when shopping Astro/Safari, especially during the demo drive. Show your prospects how easy it is to reach all switches and controls. Point out the standard equipment like the comfortable high-back front bucket seats, the full-length, color-keyed cloth headliner and color-keyed floor covering. Of course, many customers will want to personalize their vehicles. Describe the various available Delco sound system and point out the value in the CL/SLE and LT/SLT trim levels that add many features like color-keyed carpeting and extra insulation to an already attractive package.

ANTI-CORROSION

Astro/Safari Passenger Vans are carefully designed and built to resist corrosion, so the application of additional rustproofing is neither necessary nor required. Chevrolet's confidence in its extensive anti-corrosion protection is reflected in a new-truck warranty which includes 6-year/100,000-mile rust-through protection. See dealer for terms and conditions of the limited warranty.

EXTERIOR COLORS

■ The paint samples below are representative of the exterior colors offered on the Astro/Safari Passenger Van line. Refer to the Color and Trim availability charts to determine specific availability. Red type indicates a new color for 1989.

10 IVORY WHITE

15 STERLING SILVER MET.

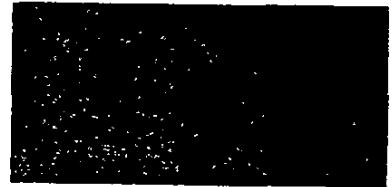
20 ONYX BLACK



27 SMOKE BLUE MET.

33 MOJAVE BEIGE

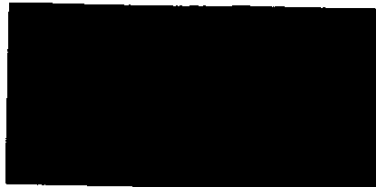
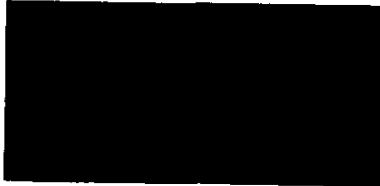
34 SUNSET GOLD MET.



36 WINTERGREEN MET.

75 DEEP RED MET.

77 BURNT RED MET.



83 GRAY MET.

68 CARAMEL BROWN MET.

98 MIDNIGHT BLUE MET.



INTERIOR TRIM

TYPE COLORS

VINYL



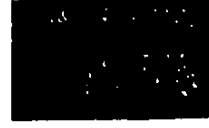
DK. BLUE



BURGUNDY



SADDLE

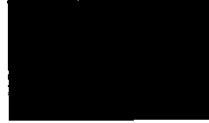


SLATE GRAY

CUSTOM VINYL



DK. BLUE



BURGUNDY



SADDLE



SLATE GRAY

CUSTOM CLOTH



DK. BLUE



BURGUNDY



SADDLE

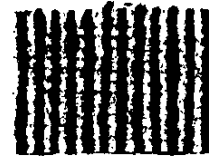


SLATE GRAY

VELOUR¹



DK. BLUE



SADDLE

SEATS

■ STANDARD BUCKET SEATS

The front bucket seats are foam-padded and available in vinyl, Custom Vinyl or Custom Cloth. The LT/SLT trim level bucket seats are reclining and have velour trim.



■ REAR SEATING

A foam-padded 3-passenger center bench seat is standard on Astro/Safari Passenger Vans. An optional rear bench seat is also available with the center bench seat or the optional center bucket seats.

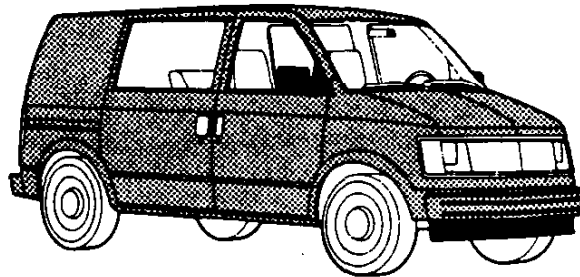


¹ Available with LT/SLT models only.

COLOR COMBINATIONS

SOLID COLORS (ZYI)

Solid paint (ZYI) is standard on all models. All painted areas of the body and front end sheet metal, including the bumpers, are the same color. Below are the interior trim color and exterior paint combinations recommended by Chevrolet/GMC, however, any available interior trim color may be ordered.



EXTERIOR COLORS		STRIPE COLORS	INTERIOR COLORS				WHEEL COLORS*	
COLOR 1	COLOR 2	(requires D85 body striping)	Dk. Blue	Burgundy	Saddle	Slate Gray	Aluminum	Rally
10 Ivory White	—	Blue/Silver 25A	•				W	S
	—	Red/Black 74A		•		•	W	S
	—	Gold/Black 53A			•		W	S
15 Sterling Silver Met.	—	Red/Black 74A		•		•	S	S
	—	Blue/Silver 25A	•				S	S
20 Onyx Black	—	Blue/Silver 25A	•	•		•	S	S
	—	Gold/Black 53A			•		S	S
27 Smoke Blue Met.	—	Blue/Silver 25A	•			•	B	S
33 Mojave Beige	—	Orange/Black 58A	•	•	•	•	G	G
34 Sunset Gold Met.	—	Gold/Black 53A			•	•	G	G
36 Wintergreen Met.	—	Gold/Black 53A			•	•	S	S
75 Deep Red Met.	—	Red/Silver 71A		•	•	•	S	S
77 Burnt Red Met.	—	Red/Silver 71A		•	•	•	S	S
83 Gray Met.	—	Red/Black 74A		•		•	S	S
	—	Gold/Black 53A			•		S	S

*Wheel Color Legend: S-Silver, G-Sunset Gold, B-Lt. Blue, W-Ivory White

WITH LUXURY TOURING PACKAGE (YC7)

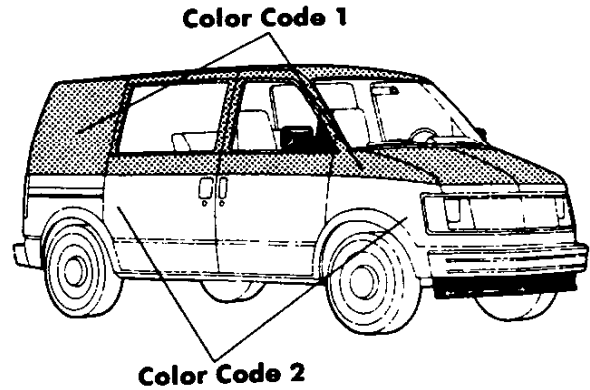
Below are the interior trim color and exterior paint combinations recommended by Chevrolet/GMC. They are the only available interior and exterior combinations allowed.

EXTERIOR COLORS		STRIPE COLORS	INTERIOR COLORS		WHEEL COLORS*	
COLOR 1	COLOR 2	(requires D85 body striping)	Dk. Blue	Saddle	Aluminum	Rally
68 Caramel Brown Met.	—	Gold		•	G	G
98 Midnight Blue Met.	—	Blue	•		B	S

*Wheel Color Legend: S-Silver, G-Sunset Gold, B-Lt. Blue

SPECIAL TWO-TONE (ZY3)

Special two-tone paint (ZY3) is available on all models and includes a dual color decal stripe. The areas above the decal are painted color code 1. The areas below the decal, including the bumpers, are painted color code 2. Below are the interior trim color and exterior paint combinations recommended by Chevrolet/GMC. The only available color code 1/color code 2 exterior color combinations are those shown in the chart below, however, any available interior trim color may be ordered.



EXTERIOR COLORS		STRIPE COLORS	INTERIOR COLORS				WHEEL COLORS*	
COLOR 1	COLOR 2		Dk. Blue	Burgundy	Saddle	Slate Gray	Aluminum	Rally
10 Ivory White	77 Burnt Red Met.	Red/Silver 71A		•		•	S	S
	33 Mojave Beige	Orange/Black 58A			•	•	G	G
	34 Sunset Gold Met.	Orange/Black 58A			•	•	G	G
15 Sterling Silver Met.	27 Smoke Blue Met.	Blue/Silver 25A	•			•	B	S
	77 Burnt Red Met.	Red/Silver 71A		•		•	S	S
20 Onyx Black	34 Sunset Gold Met.	Orange/Black 58A			•	•	G	G
	33 Mojave Beige	Orange/Black 58A			•	•	G	G
	15 Sterling Silver Met.	Red/Black 74A		•		•	S	S
	15 Sterling Silver Met.	Blue/Silver 25A	•			•	S	S
27 Smoke Blue Met.	15 Sterling Silver Met.	Blue/Silver 25A	•			•	S	S
33 Mojave Beige	34 Sunset Gold Met.	Orange/Black 58A			•	•	G	G
	77 Burnt Red Met.	Gold/Black 53A		•	•	•	S	S
34 Sunset Gold Met.	33 Mojave Beige	Orange/Black 58A			•	•	G	G
36 Wintergreen Met.	34 Sunset Gold Met.	Orange/Black 58A			•	•	G	G
	15 Sterling Silver Met.	Orange/Black 58A			•	•	S	S
	33 Mojave Beige	Gold/Black 53A			•	•	G	G
75 Deep Red Met.	77 Burnt Red Met.	Red/Black 74A		•		•	S	S
	15 Sterling Silver Met.	Red/Black 74A		•		•	S	S
77 Burnt Red Met.	34 Sunset Gold Met.	Orange/Black 58A		•	•	•	G	G
	15 Sterling Silver Met.	Red/Black 74A		•		•	S	S
	33 Mojave Beige	Orange/Black 58A		•	•	•	G	G
83 Gray Met.	15 Sterling Silver Met.	Red/Silver 71A	•	•		•	S	S

*Wheel Color Legend: S-Silver, G-Sunset Gold, B-Lt. Blue, W-Ivory White

WITH LUXURY TOURING PACKAGE (YC7)

Below are the interior trim color and exterior paint combinations recommended by Chevrolet/GMC. They are the only available interior and exterior combinations allowed.

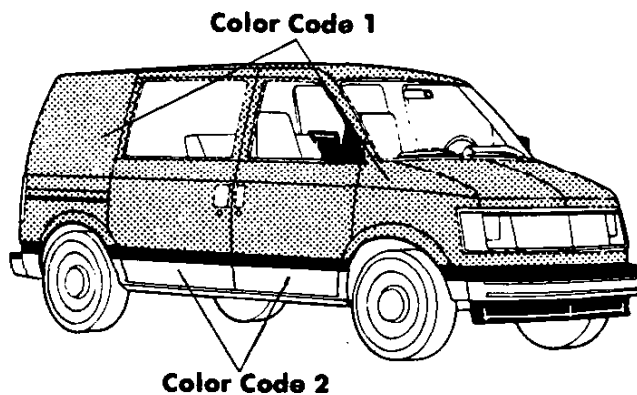
EXTERIOR COLORS		STRIPE COLORS	INTERIOR COLORS		WHEEL COLORS*	
COLOR 1	COLOR 2		Dk. Blue	Saddle	Aluminum	Rally
27 Smoke Blue Met.	98 Midnight Blue Met.	Blue	•		B	S
34 Sunset Gold Met.	68 Caramel Brown Met.	Gold		•	G	G

*Wheel Color Legend: S-Silver, G-Sunset Gold, B-Lt. Blue

COLOR COMBINATIONS

CUSTOM TWO-TONE (ZY6)

Custom two-tone paint (ZY6) is available on all models (except Astro LT/Safari SLT). Color code 1 is applied to the areas above the lower styling crease line, and color code 2 is applied to the areas below the lower styling crease line, including the bumpers. Below are the interior trim color and exterior paint combinations recommended by Chevrolet/GMC. The only available color code 1/color code 2 exterior color combinations are those shown in the chart below, however, any available interior trim color may be ordered.

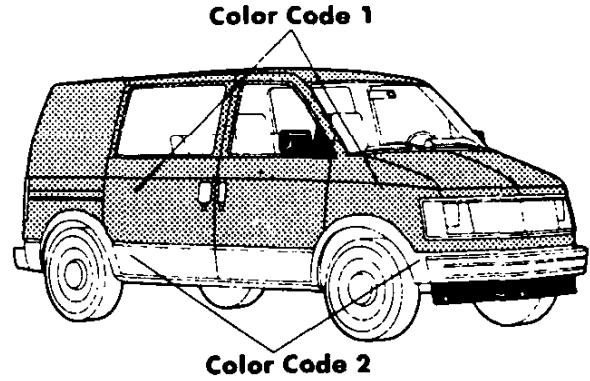


EXTERIOR COLORS		STRIPE COLORS	INTERIOR COLORS				WHEEL COLORS*	
COLOR 1	COLOR 2		Dk. Blue	Burgundy	Saddle	Slate Gray	Aluminum	Rally
10 Ivory White	77 Burnt Red Met.	Red/Silver 71A		•		•	S	S
	33 Mojave Beige	Orange/Black 58A			•	•	G	G
	34 Sunset Gold Met.	Orange/Black 58A			•	•	G	G
15 Sterling Silver Met.	27 Smoke Blue Met.	Blue/Silver 25A	•			•	B	S
	77 Burnt Red Met.	Red/Silver 71A		•		•	S	S
20 Onyx Black	34 Sunset Gold Met.	Orange/Black 58A			•	•	G	G
	33 Mojave Beige	Orange/Black 58A			•	•	G	G
	15 Sterling Silver Met.	Red/Black 74A		•		•	S	S
	15 Sterling Silver Met.	Blue/Silver 25A	•			•	S	S
27 Smoke Blue Met.	15 Sterling Silver Met.	Blue/Silver 25A	•			•	S	S
33 Mojave Beige	34 Sunset Gold Met.	Orange/Black 58A			•	•	G	G
	77 Burnt Red Met.	Gold/Black 53A		•	•	•	S	S
34 Sunset Gold Met.	33 Mojave Beige	Orange/Black 58A			•	•	G	G
36 Wintergreen Met.	34 Sunset Gold Met.	Orange/Black 58A			•	•	G	G
	15 Sterling Silver Met.	Orange/Black 58A				•	S	S
	33 Mojave Beige	Gold/Black 53A			•		G	G
75 Deep Red Met.	77 Burnt Red Met.	Red/Black 74A		•		•	S	S
	15 Sterling Silver Met.	Red/Black 74A		•		•	S	S
77 Burnt Red Met.	34 Sunset Gold Met.	Orange/Black 58A		•	•	•	G	G
	15 Sterling Silver Met.	Red/Black 74A		•		•	S	S
	33 Mojave Beige	Orange/Black 58A		•	•	•	G	G
83 Gray Met.	15 Sterling Silver Met.	Red/Silver 71A	•	•		•	S	S

*Wheel Color Legend: S-Silver, G-Sunset Gold, B-Lt. Blue, W-Ivory White

SPORT TWO-TONE (ZY7)

Sport two-tone paint (ZY7) is available on all models (except Astro LT/Safari SLT). Color code 1 is applied to the areas above the lower styling crease line, and color code 2 is applied to the areas below the lower styling crease line, including the bumpers and fender flares. Below are the interior trim color and exterior paint combinations recommended by Chevrolet/GMC. The only available color code 1/color code 2 exterior color combinations are those shown in the chart below, however, any available interior trim color may be ordered.



EXTERIOR COLORS		STRIPE COLORS	INTERIOR COLORS				WHEEL COLORS*	
COLOR 1	COLOR 2		Dk. Blue	Burgundy	Saddle	Slate Gray	Aluminum	Rally
10 Ivory White	77 Burnt Red Met.	Red/Silver 71A		•		•	S	S
	33 Mojave Beige	Orange/Black 58A			•	•	G	G
	34 Sunset Gold Met.	Orange/Black 58A			•	•	G	G
15 Sterling Silver Met.	27 Smoke Blue Met.	Blue/Silver 25A	•			•	B	S
	77 Burnt Red Met.	Red/Silver 71A		•		•	S	S
20 Onyx Black	34 Sunset Gold Met.	Orange/Black 58A			•	•	G	G
	33 Mojave Beige	Orange/Black 58A			•	•	G	G
	15 Sterling Silver Met.	Red/Black 74A		•		•	S	S
	15 Sterling Silver Met.	Blue/Silver 25A		•		•	S	S
27 Smoke Blue Met.	15 Sterling Silver Met.	Blue/Silver 25A	•			•	S	S
33 Mojave Beige	34 Sunset Gold Met.	Orange/Black 58A			•	•	G	G
	77 Burnt Red Met.	Gold/Black 53A		•		•	S	S
34 Sunset Gold Met.	33 Mojave Beige	Orange/Black 58A			•	•	G	G
36 Wintergreen Met.	34 Sunset Gold Met.	Orange/Black 58A			•	•	G	G
	15 Sterling Silver Met.	Orange/Black 58A				•	S	S
	33 Mojave Beige	Gold/Black 53A			•	•	G	G
75 Deep Red Met.	77 Burnt Red Met.	Red/Black 74A		•		•	S	S
	15 Sterling Silver Met.	Red/Black 74A		•		•	S	S
77 Burnt Red Met.	34 Sunset Gold Met.	Orange/Black 58A		•	•	•	G	G
	15 Sterling Silver Met.	Red/Black 74A		•		•	S	S
	33 Mojave Beige	Orange/Black 58A		•	•	•	G	G
83 Gray Met.	15 Sterling Silver Met.	Red/Silver 71A	•	•		•	S	S

*Wheel Color Legend: S-Silver, G-Sunset Gold, B-Lt. Blue, W-Ivory White

TRAILERING

ASTRO/SAFARI PASSENGER VAN

When properly equipped, Astro/Safari Passenger Vans have a capacity of up to 10,000 lbs. GCWR or the ability to tow a trailer with a GTW up to 6,000 lbs., but the key is to equip the van properly.

The following easy-to-use charts, along with the R/V TRAILERING GUIDE for 1989, will guide you to the accessories and options your customers will need to tow their trailers, but it is important that you and your customers establish a true maximum amount to be towed. Make sure you've correctly established the trailer's Gross Trailer Weight (GTW) and the Gross Combination Weight Rating (GCWR).



HITCHES

Deadweight Hitch (2000 lbs.)—

This light-duty trailer hitch is used on Astro/Safari Passenger Vans for hauling trailers up to 2000 lbs., with a maximum tongue load of 200 lbs. The deadweight hitch is bolted to the rear bumper on Astro/Safari Passenger Van models. A 1 $\frac{1}{8}$ " diameter ball is used. It is included as part of the optional Light-Duty Trailering Special Equipment Package Option Z72.

Weight Distributing Hitch

Platform (up to 6000 lbs.)—When trailer-loaded weights exceed 2000 lbs., or the tongue weight exceeds 200 lbs., a frame-mounted load-distributing hitch is used. The platform is bolted to the frame through pre-punched holes. Hitch ball, mounting head, equalizing and anti-sway assemblies are also required and are available from outside sources. **On Astro/Safari Passenger Vans, the maximum trailer weight/tongue load is 6000/750 lbs., and the Weight Distributing Hitch Platform is only available as part of the Optional Heavy Duty Trailering Special Equipment Package RPO Z82.**

TRAILER WIRING HARNESS

Two types of wiring harnesses are available for Astro/Safari Passenger Vans. One is a 5-Lead harness which includes a male-female connector with "pigtail" that must be spliced into the trailer's wiring harness. The other wiring harness is a heavy-duty 7-Lead harness without a connector. The seven wire harness is recommended

for trailers with electric brakes. The seven wire harness is only available as part of the optional Z82 Trailering Equipment Package. The five wire is part of the optional Z72 Light-Duty Trailering Special Equipment Package. **A heavy-duty turn signal flasher must be installed with either wiring harness.**

COOLERS AND COOLING

Trailering creates higher than normal temperatures in coolant, engine and transmission oil. To help control these temperatures, Chevy/GMC offers three options: (See options pages in this section for details)

■ **RPO V01**—This provides increased radiator and transmission cooling either through the use of a larger radiator, a larger fan or increased fan pitch to pull more air through the radiator. On many truck models this type of cooling is included with the automatic transmission or factory-installed air conditioning option. (See Cooling Specifications)

■ **RPO V02**—This is an extra capacity heavy-duty automatic transmission oil cooler option. Transmission oil is circulated through a high-capacity cooler located in the right-hand tank of the radiator.

■ **RPO KC4**—This engine oil cooler option circulates oil through a separate cooler mounted ahead of the radiator.

TRAILERING SPECIAL EQUIPMENT PACKAGES

Light-Duty (RPO Z72)—The Light-Duty Trailering Special Equipment Option is recommended for trailers up to 2000 lbs., and a maximum tongue load of 200 lbs. It includes the VR2 Deadweight Trailer Hitch, Heavy-Duty Flashers and U89 5-Lead wiring harness. It is available with MX0 Transmission and V01 Heavy-Duty Radiator or V02 Heavy-Duty Radiator and Transmission Oil Cooler and 3.23 or 3.42 Rear Axle Ratio are specified. Also available with MMS Manual 5-speed Transmission and 3.08 or 3.42 Rear Axles. See options pages for details.

Heavy-Duty (RPO Z82)—The Heavy-Duty Trailering Special Equipment Option is recommended for trailers with a maximum weight up to 6000 lbs. and a maximum tongue weight of 750 lbs. It includes the Weight Distributing Hitch Platform, Heavy-Duty Radiator and Transmission Oil Cooler. It is available only when UA1 Heavy-Duty Battery, F51 Heavy-Duty Shock Absorbers, and MX0 Automatic Transmission and 3.42 or 3.73 Rear Axle Ratio are specified.