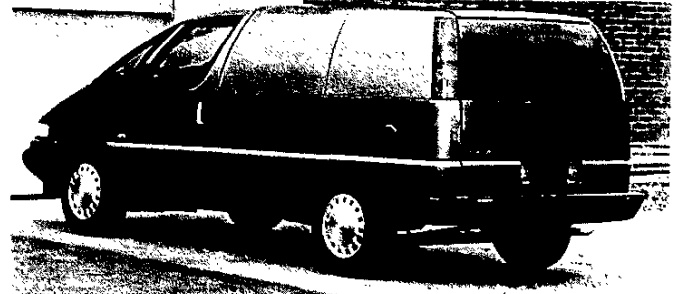
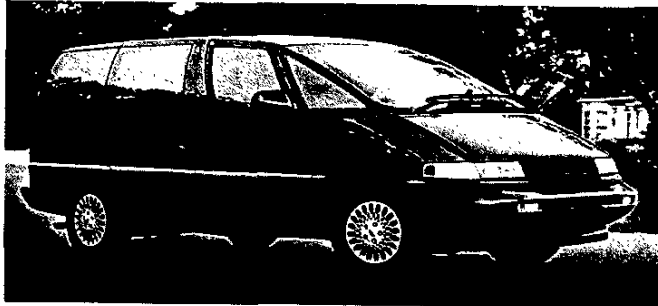


APV/LUMINA APV

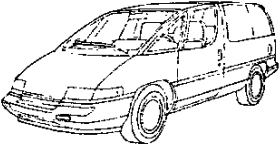


CONTENTS

	<u>Page</u>
MODELS	2
APV CARGO TRIM	3
LUMINA APV TRIM	4
LUMINA APV CL	5
POWERTRAINS	6
STANDARD SUSPENSION	7
STEERING/BRAKES	8
ELECTRICAL	9
COOLING	10
DIMENSIONS	11
OPTIONS	12
TRAILERING	13
COLOR COMBINATIONS	14
EXTERIOR COLORS	B
INTERIOR TRIM	C
SEATS	D

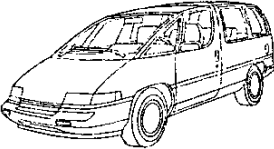
KEY: Red Print Indicates Not Available In California Bold Print Indicates Not Available w/high Altitude Emissions

APV (CARGO)

	WB	GVWR	MAX ¹	PASS.	STD	OPT	MODEL
	(IN.)	(LBS.)	PAYLOAD	CAP.	ENGINE/TRANS	ENGINE/TRANS	NUMBER
	109.8	4806	1186	2	3.1L V6/A3	—	1UM05

APV (CARGO)
The APV (Cargo) model is offered in one standard model.

LUMINA APV

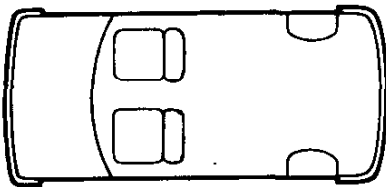
	WB	GVWR	MAX ¹	PASS.	STD	OPT	MODEL
	(IN.)	(LBS.)	PAYLOAD	CAP.	ENGINE/TRANS	ENGINE/TRANS	NUMBER
	109.8	4806	—	5 6 7	3.1L V6/A3	—	1UM06
	109.8	4806	—	5 7	3.1L V6/A3	—	1UM06 (Y91)

LUMINA APV
The Lumina APV is offered in a standard model and an optional CL (RPO Y91) version.

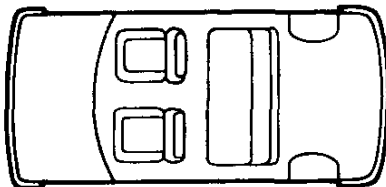
¹Based on model weight. Total available for equipment and cargo.

APV/LUMINA APV SEATING ARRANGEMENTS

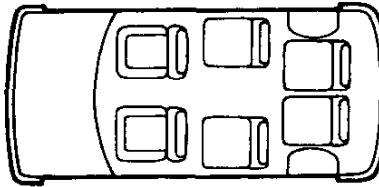
APV (CARGO) MODEL
STANDARD: 2-PASSENGER SEATING



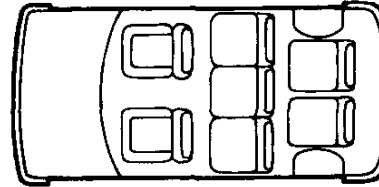
LUMINA APV MODEL
STANDARD w/BASE:
5-PASSENGER SEATING (RPO ZP5)



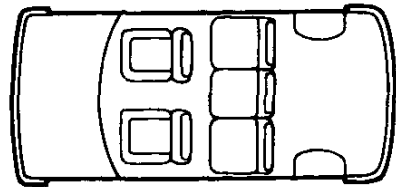
LUMINA APV MODEL
OPTIONAL w/BASE:
6-PASSENGER SEATING (RPO AB3)



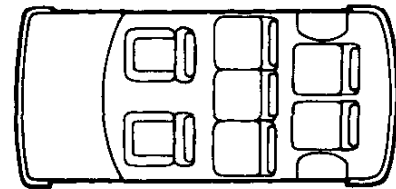
LUMINA APV MODEL
OPTIONAL w/BASE:
7-PASSENGER SEATING (RPO ZP7)



LUMINA APV CL MODEL
STANDARD w/CL (RPO Y91):
5-PASSENGER SEATING (RPO AB4)



LUMINA APV CL MODEL
OPTIONAL w/CL (RPO Y91):
7-PASSENGER SEATING (RPO ZP7)



APV/LUMINA APV TRIM LEVELS

APV (CARGO)
The APV (Cargo) is offered in one standard trim level.

LUMINA APV
The Lumina APV standard trim level offers an impressive degree of standard equipment.

LUMINA APV CL (RPO Y91)
The optional CL (RPO Y91) trim package offers an additional level of comfort and convenience features compared to the standard Lumina APV trim level.

APV (CARGO)

The 1990 APV (Cargo) Van is a completely new vehicle for 1990. It is part of the new Chevrolet Lumina model line-up which includes a 4-door sedan, a 2-door coupe and a passenger and cargo version of the APV. The APV (Cargo) Van is designed to offer buyers a high level of standard comfort and convenience features.



Some equipment shown may be optional or extra cost.

The following features are standard:

POWERTRAIN/CHASSIS

- 3.1-liter V6 engine with Electronic Fuel Injection (EFI) is standard. It produces 120 net horsepower @ 4200 rpm and 175 lb. ft. of net torque @ 2200 rpm.
- Dual horns.
- Standard 3-speed automatic transmission.
- Fully independent front suspension with MacPherson Struts.
- 1.1" front stabilizer bar.
- Rear suspension is a trailing twist axle design.
- 1" rear stabilizer bar.
- Power front disc/rear drum brakes.
- Power rack-and-pinion steering.
- Space frame construction.
- 20.0-gallon (approx.) fuel tank.
- Tethered gas cap.
- 525 CCA battery.
- 100 amp alternator.

EXTERIOR

- Front and rear bumpers painted lower body color.
- APV nameplates.
- Composite halogen headlamps.
- 14" x 5.5" steel wheels.
- 14" full wheel covers.
- Four P205/70R14 Blackwall All-season steel-belted radial tires.
- Compact spare tire with spare tire carrier underbody.
- Sliding side door.
- Remote LH and manual RH black-painted rearview sport mirrors.
- One-piece rear liftgate.
- Rear window wiper/washer.

INTERIOR

- Lowback front-bucket vinyl seats.
- Coat hooks.
- Cup holder, cigarette lighter ashtray and storage compartment on center console.
- Glove box and ash tray lamps.
- Rubber mat rear of front seats.
- RH and LH visors.
- Gages include speedometer, odometer, tachometer and fuel level.
- Solar windshield.
- Tinted glass on all windows.
- Delco Electronically-Tuned AM/FM Stereo with Seek-Scan, Extended Range Sound System, Digital Clock and Mast Antenna.
- Deluxe-air heater and defogger.

LUMINA APV

The Lumina APV Passenger Van is a completely new vehicle for 1990. It is part of the new Chevrolet Lumina model line-up which includes a 4-door sedan, a 2-door coupe and a passenger and cargo version of the APV. The Lumina APV can seat up to 7 passengers, and is available in two trim levels. The base trim is designed to offer buyers a high level of standard comfort and convenience features.

The following features are standard:



Some equipment shown may be optional or extra cost.

POWERTRAIN/CHASSIS

- 3.1-liter V6 engine with Electronic Fuel Injection (EFI) is standard. It produces 120 net horsepower @ 4200 rpm and 175 lb. ft. of net torque @ 2200 rpm.
- Dual horns.
- Standard 3-speed automatic transmission.
- Fully independent front suspension with MacPherson Struts.
- 1.1" front stabilizer bar.
- Rear suspension is a trailing twist axle design.
- 1" rear stabilizer bar.
- Power front disc/rear drum brakes.
- Power rack-and-pinion steering.
- Space frame construction.
- 20.0-gallon (approx.) fuel tank.
- Tethered gas cap.
- 525 CCA battery.
- 100 amp alternator.

EXTERIOR

- Front and rear bumpers painted lower body color.
- Lumina APV nameplates.
- Composite halogen headlamps.
- 14" x 5.5" steel wheels.
- 14" full wheel covers.
- Four P205/70R14 Blackwall All-season steel-belted radial tires.
- Compact spare tire with spare tire carrier underbody.
- Sliding side door.
- Remote LH and manual RH black-painted rearview sport mirrors.
- One-piece rear liftgate.
- Rear window wiper/washer.
- Window glass at center and rear seating positions.

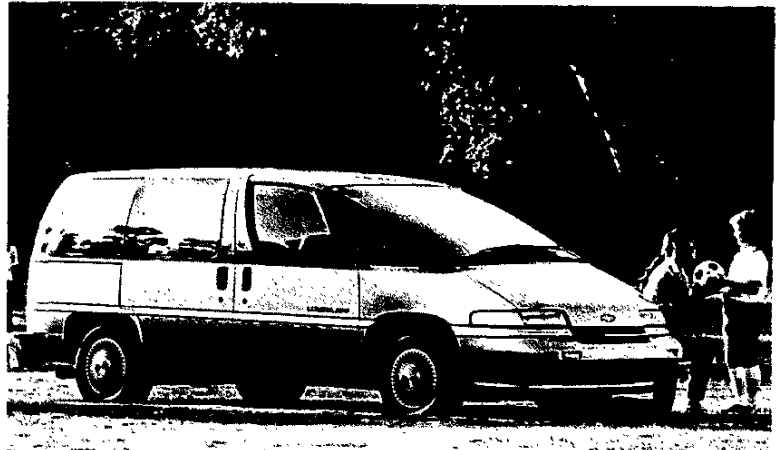
INTERIOR

- Front-bucket cloth seats with integral adjustable head restraints, reclining seat-backs, in-board armrests and net storage pockets in back.
- Scotchgard™ fabric protector.
- 3-passenger rear cloth bench seat.
- Optional 6- or 7-passenger modular seating (modular seats fold for easy removal and storage).
- Color-keyed shoulder belts on all outboard seating positions.
- Coat hooks.
- Cup holder, cigarette lighter ashtray and storage compartment on center console.
- Glove box and ash tray lamps.
- Fully carpeted floor.
- RH and LH visors.
- Gages include speedometer, odometer, tachometer and fuel level.
- Solar windshield.
- Tinted glass on all windows.
- Delco Electronically-Tuned AM/FM Stereo with Seek-Scan, Extended Range Sound System, Digital Clock and Mast Antenna.
- Deluxe-air heater and defogger.

LUMINA APV CL

The Lumina APV Passenger Van is a completely new vehicle for 1990. It is part of the new Chevrolet Lumina model line-up which includes a 4-door sedan, a 2-door coupe and a passenger and cargo version of the APV. The Lumina APV can seat up to 7 passengers, and is available in two trim levels. The uplevel CL trim is designed to offer buyers an increased level of comfort and convenience features compared to the standard Lumina APV.

The following features are standard. Bold type denotes equipment in addition to or replacing that of the Lumina APV:



Some equipment shown may be optional or extra cost.

POWERTRAIN/CHASSIS

- 3.1-liter V6 engine with Electronic Fuel Injection (EFI) is standard. It produces 120 net horsepower @ 4200 rpm and 175 lb. ft. of net torque @ 2200 rpm.
- Dual horns.
- Standard 3-speed automatic transmission.
- Fully independent front suspension with MacPherson Struts.
- 1.1" front stabilizer bar.
- Rear suspension is a trailing twist axle design.
- 1" rear stabilizer bar.
- Power front disc/rear drum brakes.
- Power rack-and-pinion steering.
- Space frame construction.
- 20.0-gallon fuel (approx) tank.
- Tethered gas cap.
- 525 CCA battery.
- 100 amp alternator.

EXTERIOR

- Front and rear bumpers painted lower body color.
- **Lumina APV CL nameplates.**
- Composite halogen headlamps.
- **Two-tone paint.**
- 14" x 5.5" steel wheels.
- **Deluxe wheel covers.**
- Four P205/70R14 Blackwall All-season steel-belted radial tires.
- Compact spare tire with spare tire carrier underbody.
- Sliding side door.
- Remote LH and manual RH black-painted rearview sport mirrors.
- One-piece rear liftgate.
- Rear window wiper/washer.
- Window glass at center and rear seating positions.

INTERIOR

- **Custom cloth on seats and door panels.**
- Front-bucket cloth seats with integral adjustable head restraints, reclining seat-backs, in-board armrests and net storage pockets in back.
- Optional 7-passenger modular seating (modular seats fold for easy removal and storage).
- **3-passenger modular seating in the middle position (modular seats fold for easy removal and storage).**
- Color-keyed shoulder belts on all outboard seating positions.
- Scotchgard™ fabric protector.
- Coat hooks.
- Cup holder, cigarette lighter ashtray and storage compartment on center console.
- Glove box and ash tray lamps.
- **Auxiliary Lights (map lights in the mini-console, a dome override switch, a rear dome reading lamp and an underhood lamp).**
- Fully carpeted floor.
- Color-keyed shoulder belts on all outboard seating positions.
- RH and LH visors.
- Gages include speedometer, odometer, tachometer and fuel level.
- Solar windshield.
- Tinted glass on all windows.
- Delco Electronically-Tuned AM/FM Stereo with Seek-Scan, Extended Range Sound System, Digital Clock and Mast Antenna.
- Deluxe-air heater and defogger.
- **Comfortilt steering wheel.**
- Tinted glass on all windows
- **Electronic controlled air conditioning.**

1990 APV/LUMINA APV

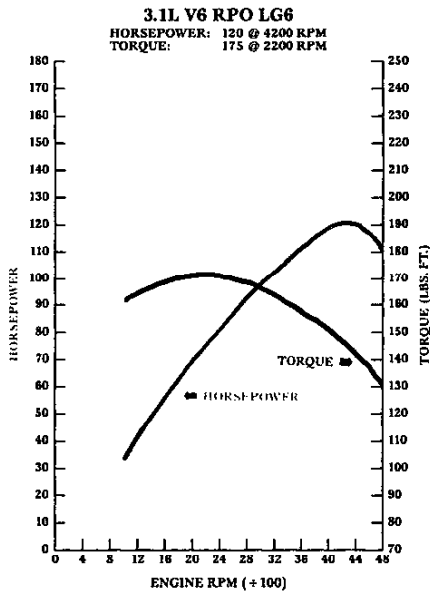
POWERTRAINS

KEY: S Standard O Optional RED Not Available w/California Emissions H High Altitude Emissions Only
 —Not Offered BOLD Not Available w/High Altitude Emissions C California Emissions Only

MODEL	TRANSMISSION				AXLES				GVWR
	MAN 4-SPD	MAN 5-SPD	AUTO 3-SPD	AUTO 4-SPD	← ECONOMY →		POWER →		
APV/LUMINA APV									
ENGINE							3.18		
3.1L V6	—	—	S	—			S		4806

HORSEPOWER AND TORQUE RATINGS	
ENGINES	3.1L V6
ORDERING CODE	LG6
SAE NET HORSEPOWER @ RPM	120 @ 4200
SAE NET TORQUE LB. FT. @ RPM	175 @ 2200
FUEL SYSTEM	EFI
CLUTCH SIZE (IN.)	—
STD. Battery (Cold Cranking Amps @ 0°F)	525

TRANSAXLE GEAR RATIOS



AUTOMATIC	
TRANSMISSION MODEL	AUTOMATIC 3-SPEED THM 125
RPO CODE	MX1
GEAR RATIOS	
First	2.84
Second	1.60
Third	1.00
Fourth	—
Reverse	2.07
GEAR TYPE	Planetary
TORQUE CONVERTER	
Element Types	Pump, Stator, Turbine
Lock-up Clutch	Automatic
POWER TAKE-OFF DATA	
Opening Type:	—
Location:	—
Drive Gear:	—
PTO Gear RPM	—
@ 1000 Engine RPM:	—
PTO Pitch Line	—
Velocity @ 1000 RPM:	—
LUBRICANT CAPACITY (pints)	
Dry Fill	12.7
Refill	—

CARGO MODEL PASSENGER MODELS

MODEL	APV (CARGO)	LUMINA APV PASSENGER VAN			LUMINA APV CL PASSENGER VAN	
MODEL NUMBER	1UM05	1UM06			1UM06/Y91	
SUSPENSION (STD)						
Seating Capacity	2	5	6	7	5	7
PAYLOAD (Max. lbs.) ¹	1186	—			—	
GVWR (lbs.)	4806	4806			4806	
GAWR (lbs.): Front Rear	2450 2403	2450 2403			2450 2403	
FRONT SUSPENSION: Type Standard Spring Cap. (Tot. lbs.)	Ind. MacPherson Strut 2194	Ind. MacPherson Strut 2194			Ind. MacPherson Strut 2194	
Front Shock Absorbers Piston Diameter (mm) STD/OPT	32/—	32/—			32/—	
Front Stabilizer Bar Diameter (in.)	1.1	1.1			1.1	
REAR SUSPENSION: Type Standard Spring Cap. (Tot. lbs.)	Trailing Twist Axle 2020 Coil Spring	Trailing Twist Axle 2020 Coil Spring			Trailing Twist Axle 2020 Coil Spring	
Rear Shock Absorbers Piston Diameter (mm) STD/OPT	25/—	25/—			25/—	
Rear Stabilizer Bar Diameter (in.)	1.0	1.0			1.0	
FRONT AXLE: Type Make Maximum Capacity (lbs.) Standard Hub Locks Pinion/Ring Gear Type	— — 2450 — —	— — 2450 — —			— — 2450 — —	
REAR AXLE: Type Make Maximum Capacity (lbs.) Pinion/Ring Gear Type	Twist A.O. Smith 2403 —	Twist A.O. Smith 2403 —			Twist A.O. Smith 2403 —	
STANDARD TIRES: Tire Capacity (lbs. each) Front/Rear Inflation (PSI) Max.	Tubeless SBR P205/70R14 1246 35	Tubeless SBR P205/70R14 1246 35			Tubeless SBR P205/70R14 1246 35	
WHEELS: Size (in.) Front/Rear Capacity (lbs. each) Bolt Holes Bolt Circle Diameter (in.) Offset (mm) Revolutions per mile @ 45 MPH	14 x 5.5 1272 5 4.5 42 318	14 x 5.5 1272 5 4.5 42 318			14 x 5.5 1272 5 4.5 42 318	

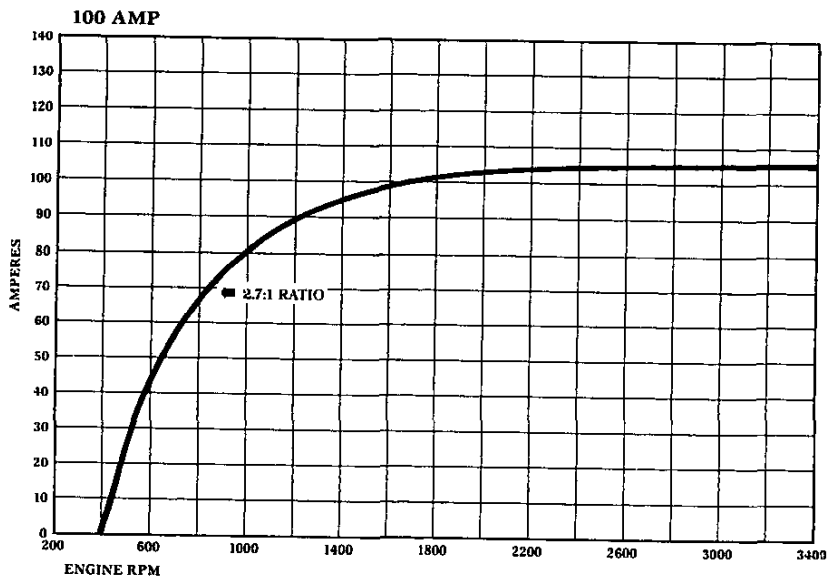
¹Based on model weight. Total available for equipment and cargo.

CARGO MODEL		PASSENGER MODELS	
MODEL	APV (CARGO)	LUMINA APV PASSENGER VAN	LUMINA APV CL PASSENGER VAN
MODEL NUMBER	1UM05	1UM06	1UM06/Y91
STEERING			
Type	Power Rack & Pinion	Power Rack & Pinion	Power Rack & Pinion
Steering Ratio	17.6:1	17.6:1	15.7:1
Turning Diameter: Curb-To-Curb (ft.)	42.5	42.5	42.5
Wall-To-Wall (ft.) (outside front)	45.1	45.1	45.1
BRAKES			
GVWR (lbs.)	4851	4851	4851
Type	Vac. Power	Vac. Power	Vac. Power
Booster (Diaphragm Diameter) (in.)	7.87	7.87	7.87
Front Rotor Size (Diameter x Thickness) (in.)	10.2 x 1.02	10.2 x 1.02	10.2 x 1.02
Front Facing Contact Per Axle (sq. in.)	33.4	33.4	33.4
Rear Drum Size (Diameter x Width) (in.)	8.86 x 1.77	8.86 x 1.77	8.86 x 1.77
Rear Facing Contact Per Axle (sq. in.)	52.4	52.4	52.4
Parking Brake Type	Cable Activated Integral w/Rear Brakes	Cable Activated Integral w/Rear Brakes	Cable Activated Integral w/Rear Brakes

CARGO MODEL		PASSENGER MODELS	
MODEL	APV (CARGO)	LUMINA APV PASSENGER VAN	LUMINA APV CL PASSENGER VAN
MODEL NUMBER	1UM05	1UM06	1UM06/Y91
ELECTRICAL			
ENGINE STD.	3.1L V6	3.1L V6	3.1L V6
STANDARD BATTERY: Cold Cranking Amps @ 0°F @ -20°F	525 490	525 490	525 490
Reserve Capacity Minutes @ 80°F	115	115	115
STANDARD ALTERNATOR: Max. Capacity (Amps)	100	100	100
Max Watts @ 12 Volts	1020	1020	1020
Nominal Amp @ Idle (Approx.)	30	30	30
Drive Pulley Ratio	2.7:1	2.7:1	2.7:1
Model Number	CS130	CS130	CS130

ALTERNATOR CURVES

(Refer to Alternator Chart for Availability)



APV/LUMINA APV

CARGO MODEL

PASSENGER MODELS

KEY: Reg Type Manual Trans and Automatic Trans Red Type Manual Trans Only Bold Type Automatic Trans Only

MODEL	APV (CARGO)	LUMINA APV PASSENGER VAN	LUMINA APV CL PASSENGER VAN
MODEL NUMBER	IUM05	IUM06	IUM06/Y91
STANDARD COOLING SYSTEM			
ENGINE	3.1L V6	3.1L V6	3.1L V6
Standard Radiator Thickness (in.)	1.0	1.0	1.0
Total System Cap. (gal.)	3.24	3.24	3.24
Standard Fan (No. Blades x Diameter x Pitch)	5 x 415 x 14°	5 x 415 x 14°	5 x 415 x 14°
OPTIONAL COOLING SYSTEM			
ENGINE	3.1L V6	3.1L V6	3.1L V6
OPT. AIR CONDITIONING	C67	C67	C67
Radiator Thickness (in.)	1.58	1.58	1.58
Total System Cap. (gal.)	3.29	3.29	3.29
Fan (No. Blades x Diameter x Pitch)	5 x 415 x 14°	5 x 415 x 14°	5 x 415 x 14°

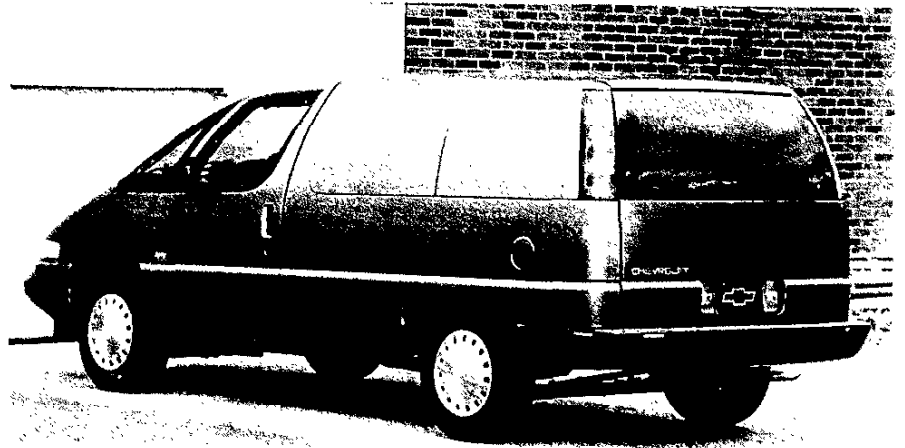
DIMENSIONS

1990
APV/LUMINA APV

CARGO MODEL		PASSENGER MODELS	
MODEL	APV (CARGO)	LUMINA APV PASSENGER VAN	LUMINA APV CL PASSENGER VAN
MODEL NUMBER	IUM05	IUM06	IUM06/Y01
EXTERIOR DIMENSIONS			
BODY:			
Wheelbase (in.)	109.8	109.8	109.8
Overall Length (in.)	194.2	194.2	194.2
Overall Height (in.)	65.2	65.2	65.2
Maximum Width (in.)	73.9	73.9	73.9
Bumper To Axle—Front Rear (in.)	42.5/42.0	42.5/42.0	42.5/42.0
Ground To Top of Load Floor (in.)	22.0	22.0	22.0
Ground Clearance FRONT (in.) REAR	9.0 12.8	9.0 12.8	9.0 12.8
SIDE LOAD DOOR:			
Opening Height (in.)	50.3	50.3	50.3
Opening Width (in.)	43.0	43.0	43.0
REAR LOAD DOOR:			
Opening Height (in.)	41.3	41.3	41.3
Opening Width Above Belt (in.)	43.0	43.0	43.0
Opening Width At Belt (in.)	50.5	50.5	50.5
Cargo Width At Wheelhouse (in.)	42.5	40.2	40.2
INTERIOR			
Headroom (in.) FRONT MIDDLE REAR	35.7 — —	35.7 35.6 34.0	35.7 35.6 34.0
Legroom (in.) FRONT MIDDLE REAR	40.7 — —	40.7 33.1 34.0	40.7 33.1 34.0
Shoulder Room (in.) FRONT MIDDLE REAR	60.6 — —	60.6 62.3 62.2	60.6 62.3 62.2
Hip Room (in.) FRONT MIDDLE REAR	55.5 — —	55.5 55.2 41.7	55.5 55.2 41.7
Load Floor Length (in.) w/Front SEAT w/MIDDLE SEAT w/REAR SEAT	83.0 — —	83.0 47.0 12.0	83.0 47.0 12.0
Interior Height (in.)	45.3	45.3	45.3
Interior Width Beltline (in.) Between Wheelhousings	42.5	40.2	40.2
Cargo Capacity (cu. ft.) w/Front SEAT	133.9	128.8	128.8
FUEL TANK			
Std. Tank Nominal (gal.)	20.0	20.0	20.0
Location of Tank	Inboard RH Frame Rail	Inboard RH Frame Rail	Inboard RH Frame Rail
Location of Filler	Left Side	Left Side	Left Side

TRAILERING SPECIAL PACKAGES

If you intend to tow a light trailer (up to 2000 lbs. gross weight) with your new APV/Lumina APV, an optional Trailing Special Package is not required. However, an optional Electronic Speed Control (RPO K34) and inflatable rear shock absorbers (RPO G67) are recommended (RPO G67 is not available on APV [Cargo]). A deadweight trailer hitch, 1 1/8" diameter trailer hitch ball and 5-wire wiring harness are available from outside suppliers. The wiring harness will splice into the APV/Lumina APV's electrical system. This allows the electrical system to activate trailer lights and other electrical systems.



See the chart below—Required/Recommended Trailing Equipment—for trailering options in addition to Trailing Special Packages.

The chart below indicates, in **bold type**, the trailering equipment recommended for an APV/Lumina APV for light trailer towing. To help you in ordering, each column lists Regular Production Option (RPO) numbers.

Note: The maximum Gross Trailer Weight for APV/Lumina APV is based upon a Gross Combined Weight (GCW) of 6050 lbs. The GCW equals the weight of the towing vehicle including passengers and the cargo and the loaded trailer. The Gross Axle Weight Ratings (GAWR) and Gross Vehicle Weight Ratings (GVWR) must not be exceeded, and trailer tongue weight must be included in the total vehicle weight.

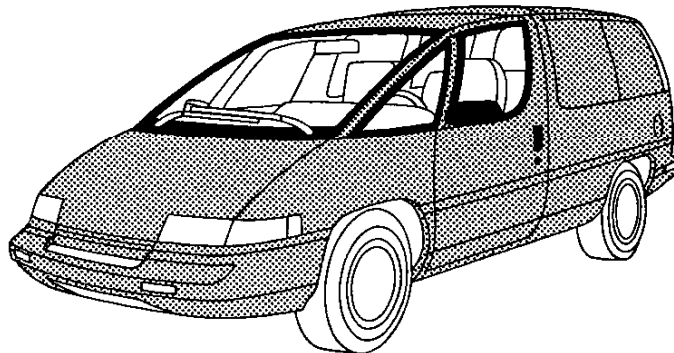
REQUIRED/RECOMMENDED TRAILERING EQUIPMENT

Trailer Classification	Light
Maximum Gross Trailer Weight (lbs.) ¹	2000/1400 ²
Maximum Tongue Load	200
Deadweight Trailer Hitch	AOS ³
Trailer Hitch Ball (1 1/8" -dia.)	AOS ³
Light-Duty 5-Wire Wiring Harness	AOS ³
Std. Engine	3.1L V6
Std. Transmissions	3-Spd. Auto.
Std. Axle Ratio (to 1)	3.18
Std. Tire Size	P205/70R14
Std. Alternator	100 Amp
Std. Steering	Power
Std. Brakes	Power
Optional Inflatable Rear Shock Absorbers ⁴	RPO G67
Optional Electronic Speed Control	RPO K34

¹Maximum gross trailer weight includes all passengers and cargo in the APV/Lumina APV. ²Maximum 2000-lb. trailer weight applies with no more than two people in the Lumina APV. Maximum 1400-lb. trailer weight applies with up to six people in the Lumina APV. ³AOS = Available from outside suppliers. ⁴Not available on APV [Cargo].

SOLID COLORS

Solid color paint is standard on APV (Cargo) and Lumina APV models without Y91. All painted areas of the body including the bumpers, are the same color. Below are the interior trim color and exterior paint combinations recommended by Chevrolet, however, any available interior trim color may be ordered. For further information, refer to Seats and Interior Trim pages as well as the Ordering Guide.



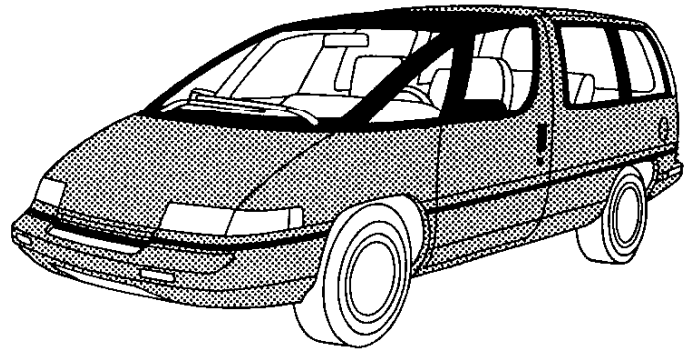
APV (Cargo)

KEY: —Not Available

EXTERIOR COLORS		STRIPE COLORS	INTERIOR COLORS
COLOR 1	COLOR 2		Gray
27 Medium Blue Met.	—	—	•
40 White	—	—	•
72 Medium Maroon Met.	—	—	•
87 Medium Gray Met.	—	—	•

SOLID COLORS

Solid color paint is standard on APV (Cargo) and Lumina APV models without Y91. All painted areas of the body including the bumpers, are the same color. Below are the interior trim color and exterior paint combinations recommended by Chevrolet, however, any available interior trim color may be ordered. For further information, refer to Seats and Interior Trim pages as well as the Ordering Guide.



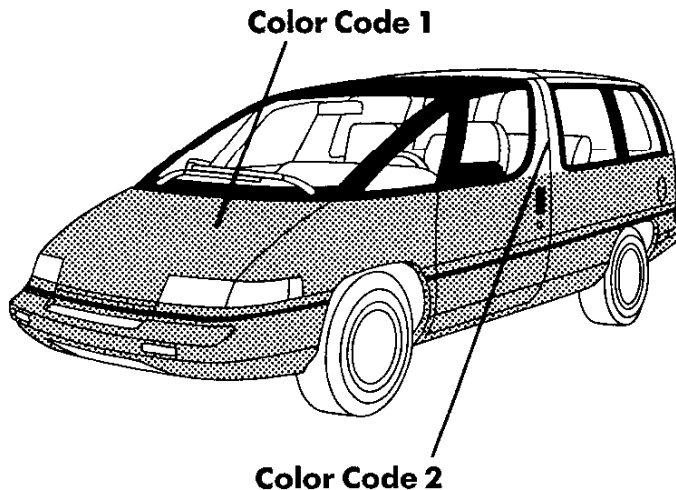
Lumina APV

KEY: —Not Available

EXTERIOR COLORS		STRIPE COLORS	INTERIOR COLORS			
COLOR 1	COLOR 2		Dk. Blue	Lt. Brown	Gray	Maroon
13 Silver Met.	—	—	•		•	•
14 Black Met.	—	—			•	•
27 Medium Blue Met.	—	—	•			
28 Dark Blue Met.	—	—	•		•	
40 White	—	—	•	•	•	•
72 Medium Maroon Met.	—	—		•	•	•
87 Medium Gray Met.	—	—			•	•

CUSTOM TWO-TONE

Custom Two-Tone is standard with the optional Lumina APV CL (Y91) Trim Package. It includes a striping decal. Color Code 1 is applied to the area below the striping decal. Color code 2 is applied above the striping decal to the front and rear roof panels, top of the doors and to the door pillars. The Bodyside Molding is black with chrome inserts. Nameplates receive a bright finish with dark gray edges. Below are the interior trim color and exterior paint combinations recommended by Chevrolet, however, any available interior trim color may be ordered. For further information, refer to Seats and Interior Trim pages as well as the Ordering Guide.



Lumina APV CL

KEY: —Not Available

EXTERIOR COLORS		STRIPE COLORS	INTERIOR COLORS		
COLOR 1	COLOR 2		Dk. Blue	Gray	Maroon
13 Silver Met.	87 Medium Gray Met.	Silver		•	•
14 Black Met.	72 Medium Maroon Met.	Red		•	•
	87 Medium Gray Met.	Red		•	•
28 Dark Blue Met.	13 Silver Met.	Blue	•	•	
	27 Medium Blue Met.	Blue	•	•	
87 Medium Gray Met.	13 Silver Met.	Red		•	•