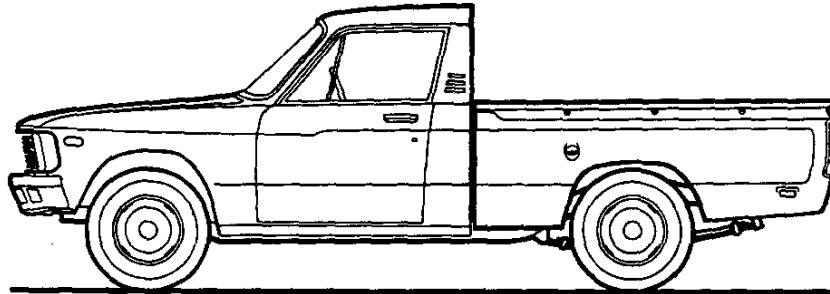
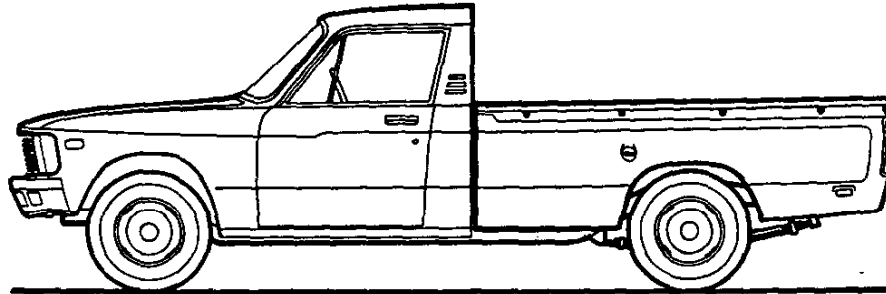




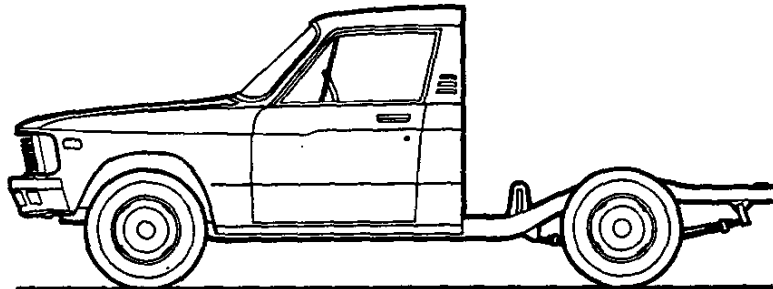
LUV PICKUP & CHASSIS-CAB

(SERIES 8) PICKUP MODEL SELECTOR



SERIES	MODEL NUMBER		BODY ORDERING CODE
	6' BOX	7½' BOX	
8	CL10503	CL10803	E63

CHASSIS-CAB MODEL SELECTOR



SERIES	MODEL NUMBER	BODY ORDERING CODE
	34.5' CA	
8	CL10503	ZW9

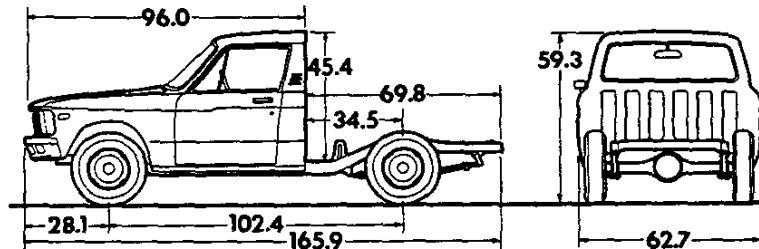
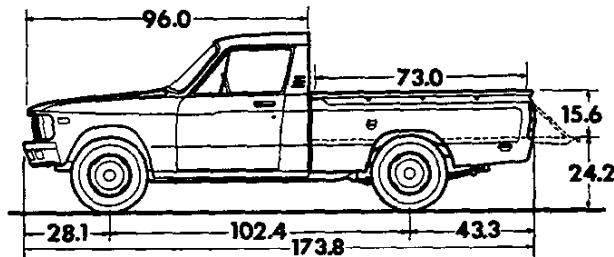
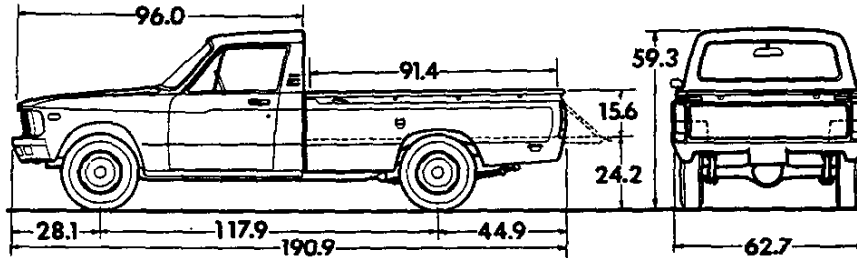
LUV PICKUP & CHASSIS-CAB

(SERIES 8)

Body Ordering Codes:

Pickup—E63

Chassis-Cab—ZW9



Model	Body Ordering Code	Engine No. Cyl.	Curb Weight (lb)			Model Weights (lb)*			Ground Clearance (in)★
			Front	Rear	Total	Front	Rear	Total	Minimum
CL10503	E63	4	1340	1085	2425	1485	1240	2725	7.1
CL10503	ZW9	4	1355	850	2205	1500	1005	2505	7.1
CL10803	E63	4	1400	1115	2515	1565	1250	2815	7.1

★ Dimensions with standard equipment, unloaded.

* Model Weights include curb weight plus occupants (standard seating capacity x 150 lbs.) Total Model Weight may vary as much as ±150 lbs. to allow for production build variation.

GVWR SELECTOR

‡Maximum Ratings			Minimum Equipment Required for GVW Rating		
GVW Rating (lb)	▲GAWR (lb)		Tires, Front	Tires, Rear	Chassis Equipment
	Front	Rear			
3550◆	1660	2080	E78-14B (4PR)	E78-14B (4PR)	Standard
3930@	1660	2540			
4150■	1830	2540			

‡ GAWRs shown are the maximum for each axle with the equipment listed.

▲GAWR—Gross Axle Weight Rating.

@102.4 in. wheelbase chassis-cab models only.

◆102.4 in. wheelbase pickup models only.

■117.9 in. wheelbase models only.

LUV PICKUP & CHASSIS-CAB (SERIES 8)

INTERIOR AND EXTERIOR SELECTION CHART

INTERIOR TYPE		Decor Option	INTERIOR TRIM COLOR AND CODE			
			Blue	Red	Saddle	
Standard Vinyl Bench Seat		Std.	VDD1		VSS1	
Mikado Custom Cloth Bench Seat		YH9	LDD1	LRR1	LSS1▲	
Custom Cloth Bucket Seat			LDD4†	LRR4*		
Custom Knit Vinyl Bench Seat**			NDD1		NSS1	
EXTERIOR COLORS	"MIGHTY MIKE" Decal Availability (Pickups Only)	SOLID PAINT CODE				
		Primary	Secondary			
Black	Yellow/Red/Black	86	86		X	X
* Light Blue	Lt. Blue/Dk. Blue/Black	20	20	X		
* Crimson Red	Yellow/Red/Black	70	70		X	X
* Strato White	Yellow/Red/Black	12	12		X	X
	Lt. Blue/Dk. Blue/Black			X		
Jasmine Yellow	Yellow/Red/Black	53	53			X

*Available only when Crimson Red or Black exterior is ordered.

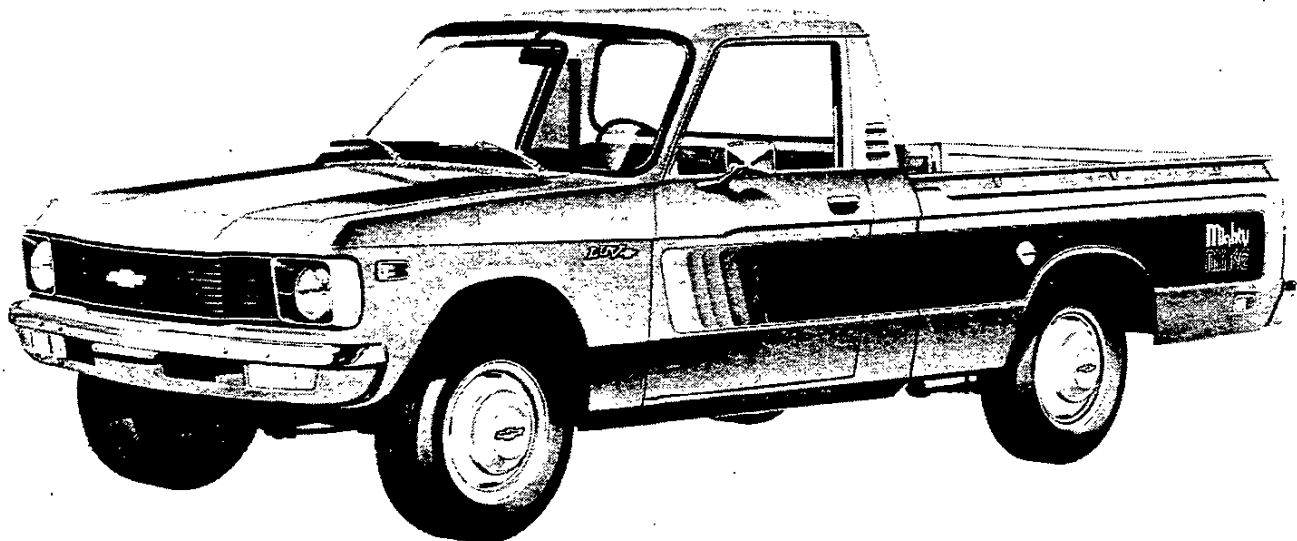
**Available only on 102.4' WB Pickup models.

†Available only when Light Blue or Strato White exterior is ordered.

▲Available only when Jasmine Yellow exterior is ordered.

*Not available on Chassis-Cab models.

LUV PICKUP WITH "MIGHTY MIKE" DECAL PACKAGE—RPO D88



LUV PICKUP & CHASSIS-CAB (SERIES 8)

POWER TEAMS

ALL STATES

ENGINE	TRANSMISSION	REAR AXLE	
Type and Code	Type	Capacity (lb)	Ratio
■110.8 2-bbl 4 cyl. (Standard Engine)	4-Speed (Std)—MM4	3500	4.10
	▲Automatic—MX1		

▲Not recommended above 4000 ft. altitude.

■Available for registration in the state of California when California Emission Certification is ordered.

ENGINE RATINGS

SAE Net Ratings @ 85°F	110.8 2-bbl 4 cyl.
Net Horsepower.....	80 @ 4800 rpm
Net Torque, lb-ft.....	95 @ 3000 rpm

NOTES

LUV PICKUP AND CHASSIS-CAB SERIES 8 VEHICLES WITH STANDARD EQUIPMENT AT POINT OF ENTRY

SERIES 8 VEHICLES WITH STANDARD EQUIPMENT

Prices shown are effective with shipments on or after March 1, 1978 of Series 8 LUV motor vehicles

Description	Model Number	Code	Wheel-base	Factory D&H [§]	List Price	Mfr's Sg't'd Retail Price*	Destination Charge & Group Number	Total
◆ 4-Cylinder 110.8-2 BBL Engine—Engine Ordering Code L10								
Pickup.....	CL10503	E63	102.4"	11.30	3874.00	3885.30	37	_____
Pickup.....	CL10803	E63	117.9"	11.30	4079.00	4090.30	37	_____
Chassis-Cab.....	CL10503	ZW9	102.4"	11.30	3710.00	3721.30	37	_____

- ★ Manufacturer's Suggested Retail Prices do not include applicable destination charges, state and local taxes, license fees, options or accessories.
 ◆ Refer to Power Team Chart for California Emission Certification Requirements.

OPTIONS AND ACCESSORIES WHEN INSTALLED BY CHEVROLET

Prices shown are effective with initial shipments of Series 8 Luv Motor Vehicles

Description	Added Weight (F) (R)	Option Number	Factory D&H [§]	List Price	Mfr's Suggested Retail Price◇
Air Conditioning: Pickup only.....	79 2	C60	N.A.	464.00	464.00
Bumper Equipment:					
<i>Bumper, Rear. Chromed</i>	-9 32	VF1	N.A.	66.00	66.00
<i>Bumper, Rear Step. Painted. Pickup only</i>	-16 51	V43	N.A.	71.00	71.00
<i>Guards, Front Bumper. Chromed</i>	8 -2	V31	N.A.	30.00	30.00
<i>Decals: "Mighty Mike" Sport Stripe. Pickup only</i>	0 0	D88	N.A.	96.00	96.00
Emission Systems: Dealer Note - One of the following emission options must be specified.					
<i>California Emission Requirements. Includes all testing, equipment and /or certification necessary for registration in the State of California</i>	15 10	YF5	N.A.	93.00	93.00
<i>High Altitude Emission Equipment. Pickup only. Not available when MX1 automatic transmission is specified</i>	15 10	NA6	N.A.	93.00	93.00
<i>Standard Emission Equipment</i>	0 0	NA2	NO ADDITIONAL CHARGE		
Exterior Decor Package: Includes belt line, windshield and roof drip moldings and full wheel covers.....	4 4	YA1	N.A.	78.00	78.00
Mikado: Includes Mikado nameplate on glove compartment door and side panels at rear; 3-spoke steering wheel with stitched leather-grained vinyl covered rim and Chevrolet emblem in center cap; shift lever knob with stitched leather-grained vinyl cover; door trim panels with deluxe center insert and carpet kick panels; color-keyed carpeting; seat belts with automatic locking retractors; deluxe door actuated dome lamp; lighted ash tray and dual horns.					
With Bench Seat.....	6 2	YH9	N.A.	180.00	180.00
With Bucket Seats.....	6 6	YH9	N.A.	280.00	280.00
Additional Charges:					
Knit Vinyl Trim.....	6 2	—	N.A.	22.00	22.00
Mirrors, Exterior: Below-Eye-Line-Type. Stainless Steel.	4 2	DG4	N.A.	47.00	47.00
Radio Equipment: Pushbutton.					
AM.....	3 1	U63	N.A.	76.00	76.00
AM /FM.....	3 1	U69	N.A.	144.00	144.00
Tires: (5) E78-14 /B (4 PR) Tubeless					
<i>Passenger Type Blackwall</i>					
Front (Standard).....	0 0	XEG	NO ADDITIONAL CHARGE		
Rear (Standard).....	0 0	YEG	NO ADDITIONAL CHARGE		
Spare (Standard).....	0 0	ZEG	NO ADDITIONAL CHARGE		
<i>Passenger Type White Stripe. Available pickup series only.</i>					
Front.....	0 0	XEH	N.C.	14.40	14.40
Rear.....	0 0	YEH	N.C.	14.40	14.40
Spare.....	0 0	ZEH	N.C.	7.20	7.20
Transmission: Automatic	30 10	MX1	N.A.	340.00	340.00
Window: Sliding Rear	1 1	A28	N.A.	71.00	71.00

- § D&H amounts reflect provision for pass through of tire weight tax imposed on manufacturer or importer of tires.
 ◇ State and local taxes not included.

NOTES

LUV PICKUP & CHASSIS-CAB

CAB & BODY FEATURES CAB CONSTRUCTION COLOR & TRIM CHARTS

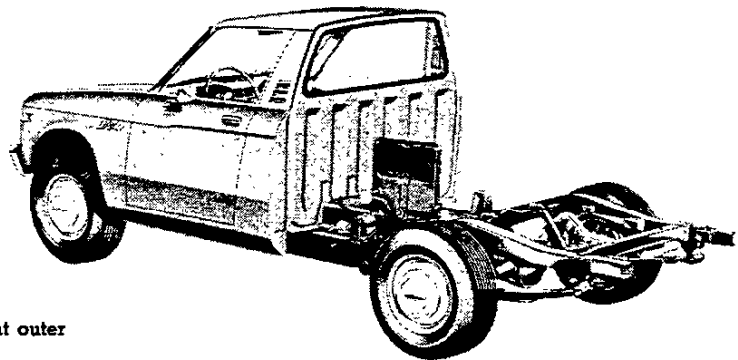
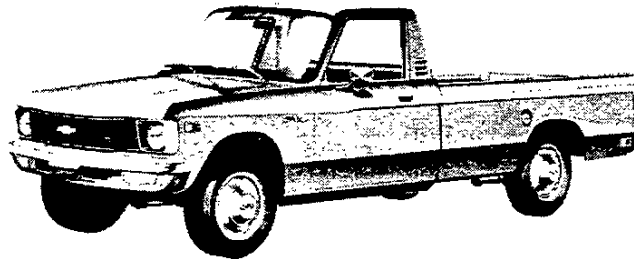
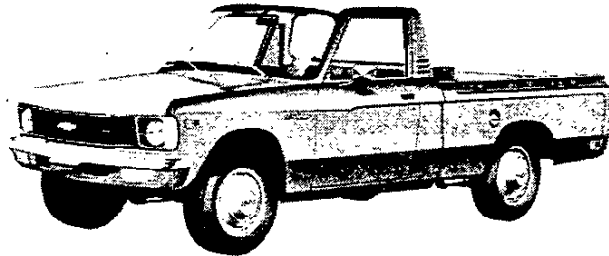
LUV PICKUP & CHASSIS-CAB

(SERIES 8)

STANDARD MODELS

The Standard Models Include the Following Items as Standard Equipment

EXTERIOR FEATURES



● **Bright appearance items:**

Chevrolet Emblem: Mounted center of grille with bright outer edge and ochre paint fill
Chrome front bumper
Chrome LH exterior mirror
Door entry handles
Door lock cylinder assemblies
Fuel filler cap (Pickup models only)
Grille: Bright upper and lower moldings
Headlamp bezel bright trim
LUV/Bowtie nameplates: Side of each front fender

● **Color:** See Interior & Exterior Color Selection Chart

● **Hub caps:** Painted white with ochre and black paint fill in Chevrolet emblem

● **Lettering "CHEVROLET" tailgate:** Painted black on all exterior colors except Black, where the letters are painted ochre. (Pickup models only)

● **Lights:**

Combination parking/direction/hazard: two front
Combination rectangular rear lamps: Pickups—tail/stop in upper section w/red lens and reflector; hazard/direction signal in middle section w/amber lens; back-up lamp in lower section w/clear lens. Chassis-Cabs—wiring only to end of frame for tail/stop/hazard/direction signal/backup/license plate.
Headlamps: Two
License Plate: single rear (Pickup models only)
Side marker lights: two front (all models) and two rear (Pickup models only)

Note: The EGR fuel cannister shown is temporarily mounted above the fuel tank, and may be relocated by the body installer; but it must remain in an upright position. Instructions in Owner's Manual.

● **Mirror:** LH chrome fixed arm with rectangular head

● **Pickup Box:** All steel; 6 ft box—8 cargo hold-down eyes with 3 on outside edge of each side top rail and 2 on outside edge of tailgate top rail; 8 ft box—10 cargo hold-down eyes with 4 on outside edge of each side top rail and 2 on outside edge of tailgate top rail.

● **Spare tire carrier:** Mounted on frame with mechanical winch and chain for raising and lowering tire assembly

● **Tools:** Mechanical jack, combination jack handle/wheel nut wrench/hub cap tool, and spare tire winch handle

● **Wheels:** Painted white

● **Windshield Wipers and Washers:** Electric, 2-speed wipers, coordinated washers

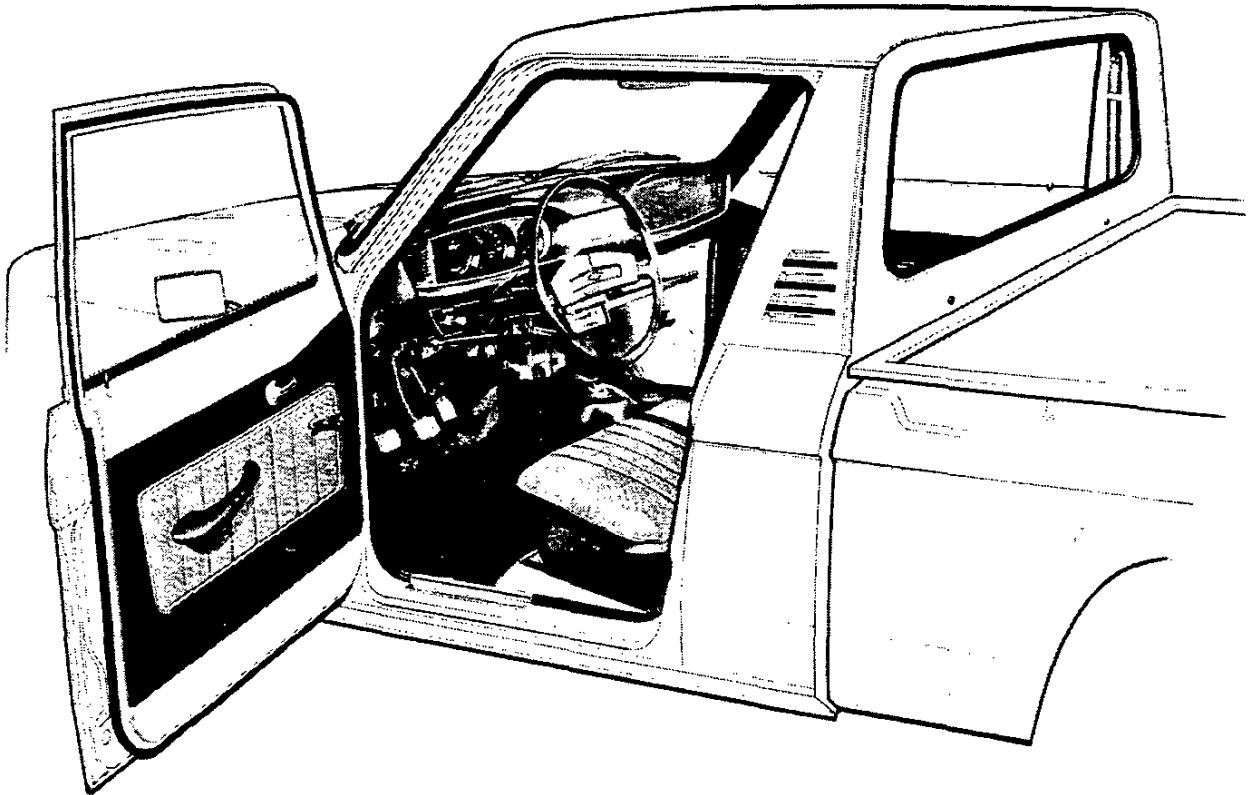
LUV PICKUP & CHASSIS-CAB

(SERIES 8)

STANDARD MODELS

The Standard Models Include the Following Items as Standard Equipment

INTERIOR FEATURES



- **Air Vents:** RH & LH instrument panel side and foot vents; individually controlled. Also flow-thru with air being exhausted through outlets located in upper rear quarter panels
- **Armrests:** Color-keyed RH & LH
- **Ashtray:** With cigar lighter
- **Colors:**
 - Painted interior: Same as exterior color choice
 - Trim—Color choice of saddle, red or blue
- **Dome Lamp** with switch; over rear window
- **Door Locks:** Inside pushbutton lock/release
- **Door Seals:** Constant-section sponge rubber
- **Door trim panels:** Embossed vinyl
- **Floor Mat:** Color-keyed molded vinyl
- **Glove Compartment:** In RH side of instrument panel, with door
- **Headliner:** Color-keyed vinyl
- **Heater and Defroster:** Outside air heater with manual water flow control for temperature; automatic blower operation with ignition switch on for power ventilation system
- **Instrument Panel:** Steel with vinyl-coated foam padding
- **Instruments:**
 - Gages: Speedometer, odometer, temperature and fuel
 - Switches: Exterior/instrument lights; dome lights; wiper-washer; ignition; combination steering column switch for direction signals by moving lever up and down and headlight beams by moving lever fore and aft; hazard warning on steering column
 - Warning Lights: Generator, oil pressure, parking brake, direction signals and high beam
- **Insulation and Sound Deadening**
- **Interior Lights:** Instrument controlled by main light switch and dome with separate switch
- **Mirror, Rearview:** Inside mounted to windshield header with impact break-away arm
- **Seat:** Full-width with latched forward fitting back for access to storage area behind seat; textured all-vinyl trim
- **Seat and Shoulder Belts:** Color-keyed; automatic locking and retractable for driver and passenger
- **Steering Wheel:** Molded plastic; 2-spoke; 15.7" diameter; center horn bar
- **Sunshades:** Color-keyed; LH and RH vinyl trimmed

December 23, 1977

LUV Pickup & Chassis-Cab—Page C

LUV PICKUP & CHASSIS-CAB

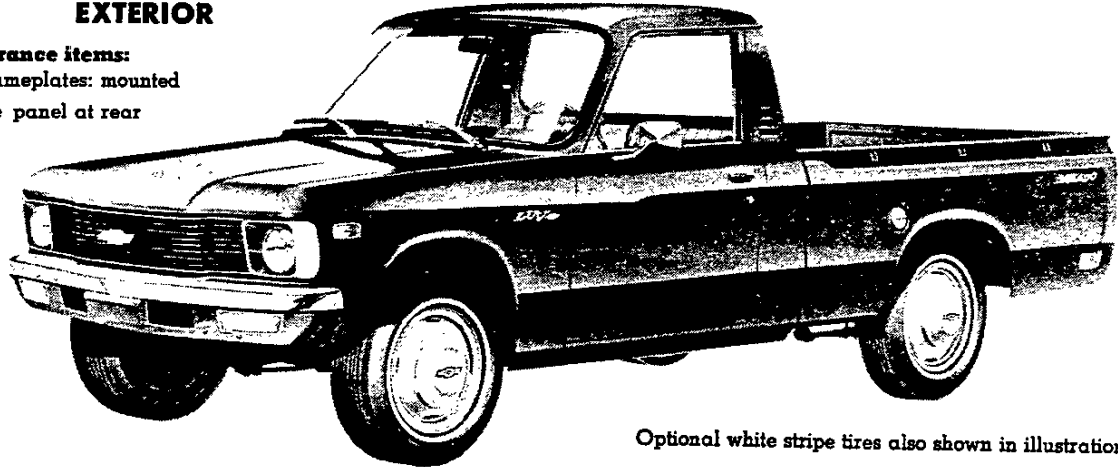
(SERIES 8)

MIKADO MODEL OPTION—RPO YH9

(This option includes all standard items plus the additions or substitutions listed below)

EXTERIOR

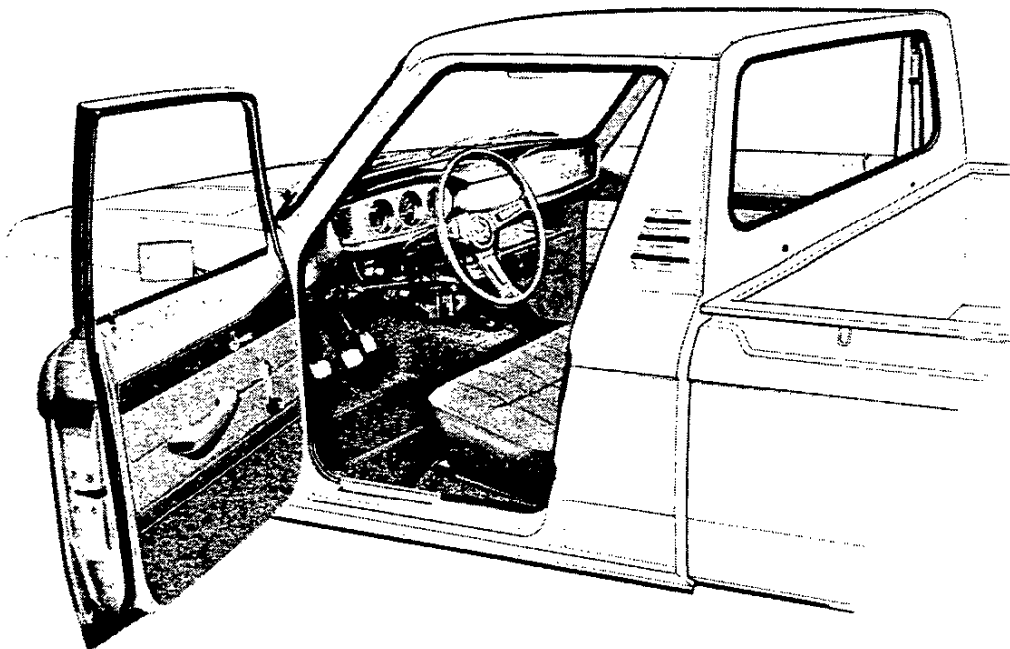
- **Bright appearance items:**
"Mikado" nameplates: mounted
on each side panel at rear



Optional white stripe tires also shown in illustration

INTERIOR

- **Ash Tray:** Lighted
- **Bright appearance items:**
"Mikado" nameplate mounted on glove box door
Chevrolet Emblem: in center cap of steering wheel
- **Carpeting:** Color-keyed
- **Dome Lamp:** Brighter lamp, with door-actuated switches
- **Door Trim Panels:** Deluxe cloth or deluxe knit vinyl center insert in blue, red (cloth only) or saddle and color-keyed carpet kick panel
- **Horn:** Dual note
- **Seat:** Choice of: 1) Deluxe cloth bench in blue, saddle or red, 2) Deluxe cloth bucket seats in red (with red or black exterior paint only or blue with white or blue exterior paint and at added cost), 3) knit vinyl bench in blue or saddle (at added cost)
- **Shift Lever Knob:** Stitched, leather-grained urethane covered knob
- **Steering Wheel:** 3-spoke; stitched, leather-grained urethane covered rim

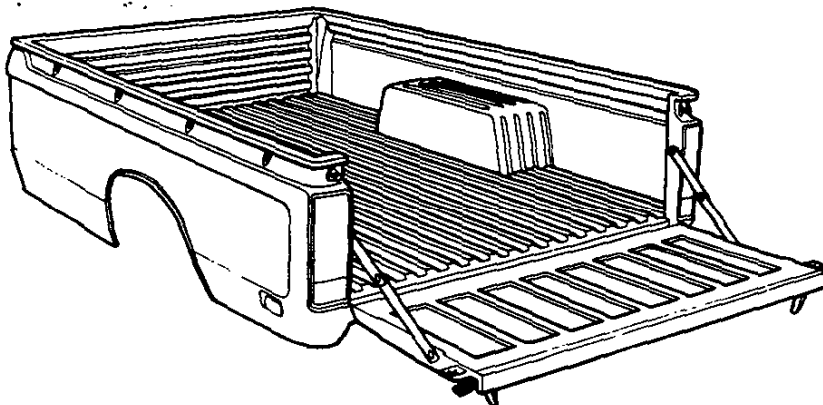
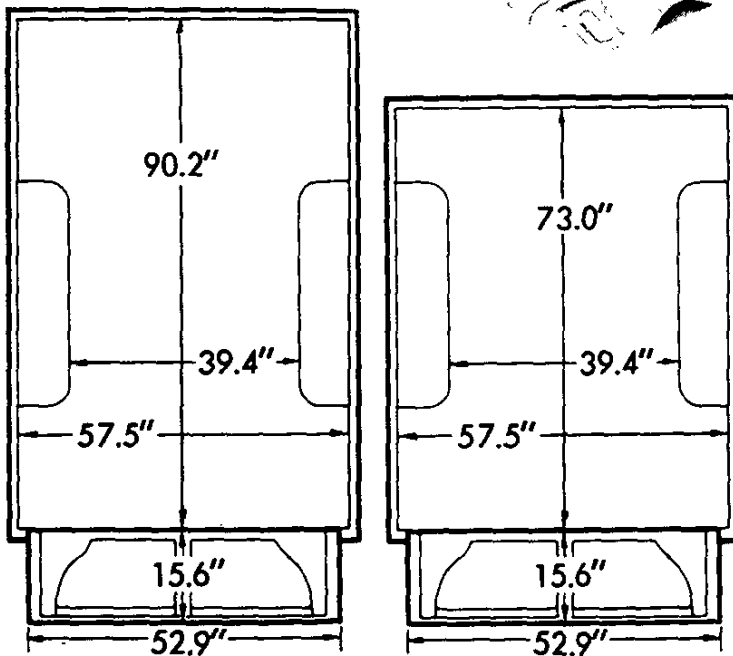
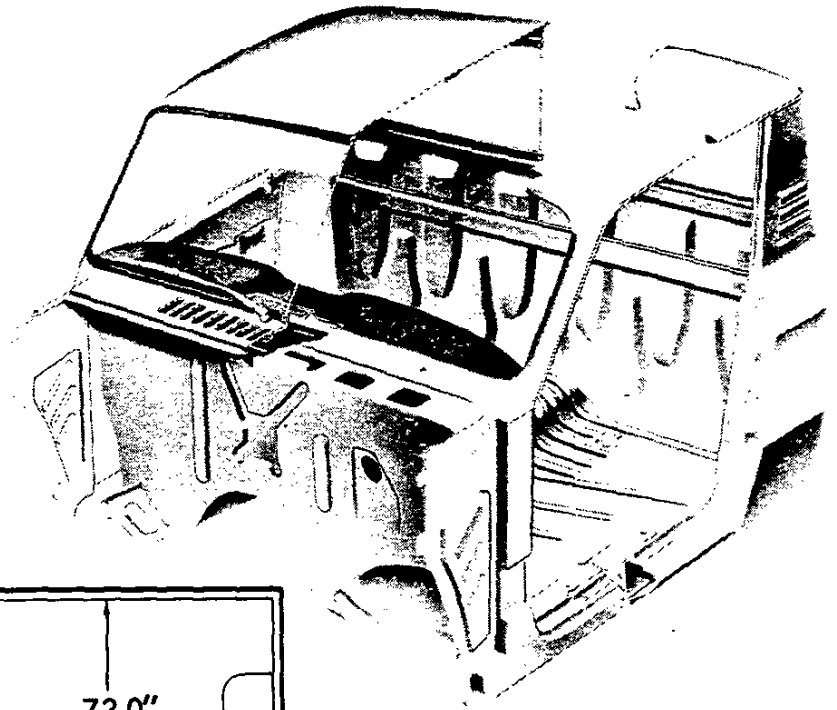


LUV PICKUP & CHASSIS-CAB

(SERIES 8)

Cab Construction

The cab is a 2-door, 2-passenger unit utilizing all-steel, welded construction. A plenum chamber with high level, screened air intake is incorporated in the front end structure for interior ventilation. Single-wall construction is utilized throughout the remainder of the cab except in the upper rear quarter areas. Zinc-rich primer or plastisol is applied to several areas to reduce sheet metal corrosion. Drip rails are used at the sides of the roof panel. Lower body joints are filled with pumpable sealer. A 6-point mounting system is utilized for the integrated cab and front body structure. All mounts are the double rubber biscuit type.



Pickup Box

The all-steel, welded pickup box is built in both 6- and 7.5-foot nominal lengths with approximate 38 and 47 cubic foot capacities respectively. Integral skid strips are incorporated in the load floor with reinforcements provided at the outer ends of the numbers three, four and five cross sills. Single wall construction is utilized for the side panels and double wall construction is used for the tailgate. Eight cargo hold-down eyes of heavy-gage wire are provided on 6-ft. models and ten are provided on 7.5-ft. models. The 6-ft. box has three located at the outside edge of each side panel top rail while the 7.5-ft. box has four on each side panel top rail. Both models employ two at the outside edge of the tailgate top rail. The grain tight tailgate, with two hinges, is secured by left and right hand over-center latches.

NOTES

STEERING

SPECIFICATIONS SERIES 10-30

SERIES		C10-30	P10	K10-20	K30	P20, P30 (42)	G10-30	P30 (32)	LUV
GEAR MAKE AND TYPE		Saginaw Steering Gear, Recirculating Ball			Saginaw Steering Gear, Integral Power	Saginaw Steering Gear, Recirculating Ball		Saginaw Steering Gear, Integral Power	Nippon Seiko K.K., Recirculating Ball
MODEL					525				Sil 08
RATIO	Gear	24:1			16/13:1	24:1		14.0:1	23.5/27.5:1
	Overall	29.2:1	29.2:1	26.3:1	17.0/13.5:1	29.2:1	29.4:1†	14.9:1	18.7/21.9:1
MOUNTING		On Frame Side Rail							
STEERING SHAFT	Type	Single	Multiple	Single		Multiple	Single	Multiple	Single
	Coupling	Pot & Rag Type	U-Joint	Pot & Rag Type		U-Joint	Rag Type	Pot & Rag Type	Rag Type
PITMAN SHAFT	Bearing	Cast Bronze							
	Location	Straddle Mounted in Steering Gear Housing							
	Diam. (in)	1.12						1.25	1.10
LINKAGE	Type	Parallelogram		Conventional		Parallelogram			
	STEERING WHEEL	2-Spoke							
	Diam. (in)	16.0	17.5	16.0	16.0	*17.5	16.0	16.0	15.7

*16.0 inches with Power Steering

†29.3:1 for G30

**Overhung mounted in steering gear housing

POWER STEERING

Chevrolet integral-type power steering is available optionally on Series C/K/G10, C/K/G/P20 & C/G/P30 models (standard on all K30 models, G30 RV Cutaway Vans and P30 Motor Home

Chassis). It helps to combat driver fatigue and aid maneuverability. It also dampens road shocks and vibrations at the steering wheel, providing extra comfort and ease of handling.

POWER STEERING SPECIFICATIONS

SERIES		RPO (N41)		RPO (N40)		
		C10-30	K10-30	P20-30 (42)	G10-30	†P30 (32)
TYPE		Integral				
STEERING CYLINDER INSIDE DIAMETER		—				
PUMP	Type	Rotary Vane				
	Mounting	LH Side of Block				
	Driven By	Belt from Crankshaft Pulley				
	Min Flow Rate	1.25 GPM @ 465 RPM				
	Max Flow Rate	3.30 GPM @ 1500 RPM				
CONTROL VALVE TYPE		—				
OIL COOLER	Type	None				
	Location	—				
RATIO	Gear	16/13:1	16/13:1	17.5:1	14.0:1	14.0:1
	Overall	19.4/17.7:1*	17.6/13.1:1	21.2:1	17.2:1*	14.9:1

†Power Steering standard

*For C20-30 19.5/17.8:1; For K30 17.0/13.5:1; For G30 17.1:1



TURNING CIRCLE DIAMETER

The specifications shown below apply to models with standard equipment only. Any change in axle, wheels or tires may result in a different turning diameter.

Dimension "A" is measured to edge of front tire at outside of circle, indicating diameter clearance needed at curb height.

Dimension "B" is measured to outer extremity of truck (front bumper or fender), indicating required wall-to-wall clearance diameter.

Series	Wheel-base (Inches)	Diameter "A" (Feet)	Diameter "B" (Feet)
LUV	102.5	34.70	36.20
LUV	117.9	N.A.	40.70
C 10516	106.5	38.18	40.16
K 10516	106.5	37.08	39.44
C 10703	117.5	41.54	43.98
K 10703	117.5	40.43	42.69
C 10903	131.5	45.82	48.28
K 10903	131.5	44.55	46.83
C 10906	129.5	45.22	47.66
K 10906	129.5	43.96	46.24
C 20903	131.5	47.57	49.78
K 20903	131.5	44.55	46.83
C 20943	164.5	58.06	60.28
C 20906	129.5	46.93	49.14
K 20906	129.5	43.96	46.24
C 30903	131.5	47.57	49.78
K 30903	131.5	44.83	46.83
C 31003	135.5	48.84	51.05
K 31003	135.5	46.01	48.01
C 31403	159.5	56.47	58.68
K 31403	159.5	53.10	55.10
C 30943	164.5	58.06	60.28
K 30943	164.5	54.58	56.58

Series	Wheel-base (Inches)	Diameter "A" (Feet)	Diameter "B" (Feet)
G11005	110	41.98	43.44
G11305	125	46.72	48.26
G11006	110	42.01	43.45
G11306	125	46.75	48.26
G21005,06	110	42.08	43.45
G21305,06	125	46.82	48.27
G31005	110	41.87	43.35
G31305,06	125	46.61	48.15
G31303	125	46.66	48.16
G31603	146	53.40	54.85
P 10542	102	38.16	40.69
P 20842	125	45.48	48.59
P 21042	133	48.02	51.13
P 30832	125	45.79	47.40
P 30842	125	45.48	48.59
P 31042	133	48.02	51.13
P 31132	137	49.61	51.22
P 31442	157	55.65	58.77
P 31432	158.5	56.44	58.06
P 31832	178	62.64	64.26



BRAKES

HYDRAULIC BRAKES

SERIES	GVWR/ Application	FRONT				REAR		APPLY SYSTEM		
		Rotor Size (diameter x thickness)	Calliper Platons (diameter)	Facing Contact per axle (sq. in.)	Drum Size (diameter x width)	Wheel Cylinder (diameter)	Facing Contact per axle (sq. in.)	Type	Booster (Diaphragm diameter)	Master Cylinder (diameter)
E1 Combine	All/Sid.	10.5 x 1.03	2.50	31.68	9.3 x 2.0	.75	63.73	Manual	—	.87
	All/150*	10.5 x 1.03	2.50	31.68	9.3 x 2.0	.75	63.73	Vac. Power	7.9 x 7.9 Tandem	.87
LUV Pickup	All/Sid.	9.843 x 1.0	2.25	29.47	10.0 x 1.75	.75	68.18	Vac. Power	6.0 Single	.87
	48.4900/Sid.	11.86 x 1.28	2.94	37.43	11.0 x 2.0	1.0	74.37	Manual	—	1.0
G10 Pickup, G10 Chevy Van	53.5600/150*	11.86 x 1.28	2.94	37.43	11.0 x 2.0	1.0	74.37	Vac. Power	9.5 Single	1.125
	53.6200/155*	11.86 x 1.28	2.94	37.43	11.15 x 2.75	.9375	107.42	Vac. Power	9.5 x 8 Tandem	1.125
G10 Chassis-Cab G10 V8 Suburban P10 Step-Van, F.C. K10 V8 (All)	62.7300/Sid.	11.86 x 1.28	2.94	37.43	11.15 x 2.75	.9375	107.42	Vac. Power	9.5 x 8 Tandem	1.125
	6050/Sid.	11.86 x 1.28	2.94	37.43	11.0 x 2.0	1.0	74.37	Vac. Power	9.5 Single	1.125
K10 Blazer, L6 Suburban G10 Blazer, Pickup	6200/Sid.	11.86 x 1.28	2.94	37.43	11.15 x 2.75	1.0	107.42	Vac. Power	9.5 x 8 Tandem	1.125
	54.5600/Sid.	11.86 x 1.28	2.94	37.43	11.0 x 2.0	1.0	74.37	Vac. Power	9.5 Single	1.125
G10 Sportvan	53.5600/Sid.	11.86 x 1.28	2.94	37.43	11.0 x 2.0	1.0	74.37	Hyd. Power	—	1.125
	6050.6200/155*	11.86 x 1.28	2.94	37.43	11.15 x 2.75	.9375	107.42	Hyd. Power	—	1.125
C-K20 Pickup, Suburban, Chassis-Cab; P20 Step-Van, F.C.	64.7100/Sid.	12.5 x 1.28	2.94	37.43	13.0 x 2.5	1.0625	116.38	Vac. Power	9.5 x 8 Tandem	1.25
	75.8200/155*	12.5 x 1.28	2.94	37.43	13.0 x 2.5	1.0625	116.38	Vac. Power	9.5 x 8 Tandem	1.25
G20 Bonus Cab, Crew Cab G20 Sportvan, Chevy Van	All/Sid.	11.86 x 1.28	2.94	37.43	11.15 x 2.75	1.0	107.42	Vac. Power	9.5 x 8 Tandem	1.125
	64.6600/Sid.	12.5 x 1.28	2.94	37.43	13.0 x 2.5	1.0625	116.38	Vac. Power	9.5 x 8 Tandem	1.25
G30 Pickup, Chassis-Cab	66.8200/Sid.	12.5 x 1.28	2.94	37.43	13.0 x 2.5	1.0625	116.38	Vac. Power	9.5 x 8 Tandem	1.25
	9.10.000/155*	12.5 x 1.53	3.38	45.81	13.0 x 3.5	1.1875	162.35	Hyd. Power	—	1.3125
G30 Bonus Cab, Crew Cab; K30 Pickup, Chassis-Cab	86.10.000/Sid.	12.5 x 1.53	3.38	45.81	13.0 x 3.5	1.1875	162.35	Hyd. Power	—	1.3125
	64.7400/Sid.	12.5 x 1.28	2.94	37.43	11.15 x 2.75	1.0	107.42	Vac. Power	9.5 x 8 Tandem	1.125
G30 Sportvan, Chevy Van	77.8400/155*	12.5 x 1.28	2.94	37.43	13.0 x 2.5	1.0625	116.38	Vac. Power	9.5 x 8 Tandem	1.25
	74.8400/Sid.	12.5 x 1.28	2.94	37.43	13.0 x 2.5	1.0625	116.38	Vac. Power	9.5 x 8 Tandem	1.25
G30 (04) w/single rears	89.10.500/Sid.	12.5 x 1.53	3.38	45.81	13.0 x 3.5	1.1875	162.35	Hyd. Power	—	1.3125
	76.8200/Sid.	12.5 x 1.28	2.94	37.43	13.0 x 2.5	1.0625	116.38	Vac. Power	9.5 x 8 Tandem	1.25
P30 Step-Van, F.C.	9.10.500/155* (7900-lb axle)	12.5 x 1.53	3.38	45.81	13.0 x 3.5	1.1875	162.35	Hyd. Power	—	1.3125
	12.14.000/155* (11,000-lb axle)	14.25 x 1.53	3.38	45.81	13.75 x 1.53	3.38	265.3	Hyd. Power	—	1.336
P30 Motor Home Chassis (125", 137", 158.5" WB)	10.5.12.500/Sid.	12.5 x 1.53	3.38	45.81	13.0 x 3.5	1.1875	162.35	Hyd. Power	—	1.3125
	14.500/Sid. Δ	14.25 x 1.53	3.38	45.81	13.75 x 1.53	3.38	265.3	Hyd. Power	—	1.336
P30 Motor Home Chassis (178" WB)	14.500/Sid. Δ	14.25 x 1.53	3.38	45.81	13.75 x 1.53	3.38	265.3	Hyd. Power	—	1.336

*150—Power Brakes; 155—HD Power Brakes.

Δ 4-wheel Disc Brakes

\bullet Rotor size (Diameter x Thickness)

\diamond Calliper Platon (Diameter)



2

3



BRAKES

HYDRAULIC BRAKE SYSTEMS

FRONT DISC BRAKE SPECIFICATIONS

MAKE	Isuzu		Chevrolet			
TYPE	Hub mounted dual faced disc					
ADJUSTMENT	Self-adjusting					
DISC (Rotor)	Double faced solid disc	Double faced disc spaced by integrally cast radial cooling passages				
Material	Cast Iron					
Overall Diameter (in.)	9.84	10.50	11.86	12.50	12.50	14.25
Effective Outside Diameter (in.)	9.72	10.50	11.75	12.44	12.44	14.04
Effective Inside Diameter (in.)	6.22	6.75	8.00	8.50	8.50	10.44
Effective Thickness (in.) nominal	0.71	1.03	1.28	1.28	1.53	1.53
Swept Area Per Axle (sq. in.)	175.5	191.7	239.6	258.2	277.8	286.5
LINING (Caliper Pad) Material	Molded Asbestos					
Lining Attachment	Bonded			Riveted		
Size Per Pad (in. x in. x in.)	4.21 x 1.75 x .433	4.92 x .91 x 4.35	5.40 x 1.92 x .465	Inner—6.00 x 1.80 x .53 Outer—8.00 x 1.80 x .43		
Facing Contact Per Axle (in.)	26.47	31.7	37.43	45.81		
CALIPER Make	Akebono	Chevrolet & Delco			Bendix	
Number Pistons Per Wheel	One					
Piston Diameter (in.)	2.25	2.50	2.94	3.38		

REAR BRAKE SPECIFICATIONS

MAKE	Chevrolet						
TYPE	Duo-Servo (Drum Type)						Hubmounted dual faced disc
ADJUSTMENT	Self-Adjusting						
SIZE	10 x 1.75	9.49 x 2.0	11 x 2.0	11.15 x 2.75	13 x 2.5	13 x 3.5	13.75 Rotor
DRUM MATERIAL	Cast Iron						
LINING Material	Molded Asbestos						
Attachment	Bonded	Riveted					
Width (in.)	1.77	2	2	2.75	2.5	3.5	Inner—6.0 x 1.8 x .53 Outer—8.0 x 1.8 x .43
Facing Contact (sq. in.)	68.18	63.73	74.37	107.42	116.38	162.35	45.81
SWEPT DRUM AREA/AXLE Single Axle (sq. in.)	111.2	116.1	138.20	192.70	204.20	283.32	265.30
WHEEL CYLINDER Number Per Wheel	One						
Piston Size (in. dia.)	.87	.75 (El Camino)	1.0	1.0 (C-K-P20) 9375 (C-K-P10, G20)	1.0625	1.187	3.38

BRAKES

STANDARD PARKING BRAKES

Parking Brake Specifications—Series 10-30

Series	Transmission	Brake Type	Facing Contact Per Axle (sq in)
El Camino	All	Cable to Rear Wheels	63.73
LUV Pickup	All	Cable to Rear Wheels	68.18
C/R/G/P10	All	Cable to Rear Wheels	74.37
C/R/G/P20	All	Cable to Rear Wheels	107.42
C/R/G/P30	All	Cable to Rear Wheels	116.38

Rear Wheel Parking Brakes
 Foot pedal operated, cable-actuated rear brakes are used for parking brakes on El Camino and all Series 10-30 models, except P30 model with optional 11,000-lb rear axle is equipped with a transmission mounted internal expanding parking brake. An Orscheln-type hand brake lever is standard on all P models. LUV pickups have an L-handle lever located under the instrument panel.

OPTIONAL PARKING BRAKES

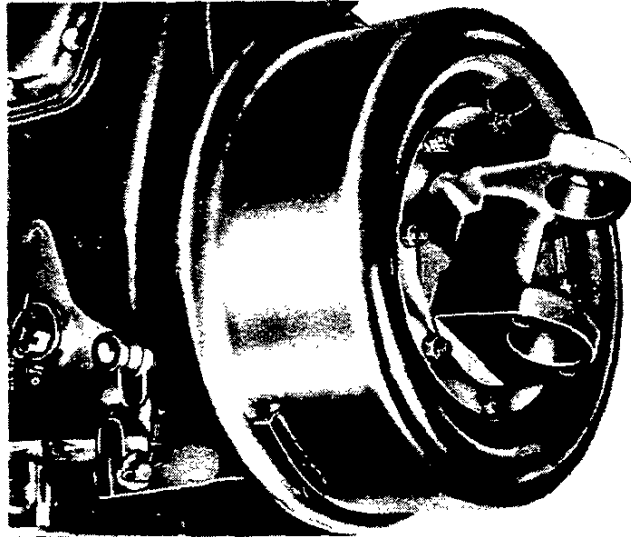
Propshaft Mounted Parking Brakes

Propshaft mounted brakes serve to lock the driveline firmly for parking. They are controlled by an Orscheln-type lever with a release device on the handle for P30 models except Motor Home chassis which offers a reaching foot operated lever with a brake release handle mounted on the bottom of the instrument panel.

Parking Brake Specifications—P30 Models

Transmission	Brake Type	Drum Dia. x Lining Width (in)	Lining Area (sq in)
4 speed SM465	Internal Expanding	11 x 2	37.18
Automatic on Motor Home chassis only	Internal Expanding	11 x 2	37.18

*11" x 2" internal expanding type propeller shaft brake included with 11,000-lb capacity rear axle on P30 Step-Van and FC models, and with 10,000-lb capacity rear axle on Motor Home chassis models.



Internal Expanding Brake



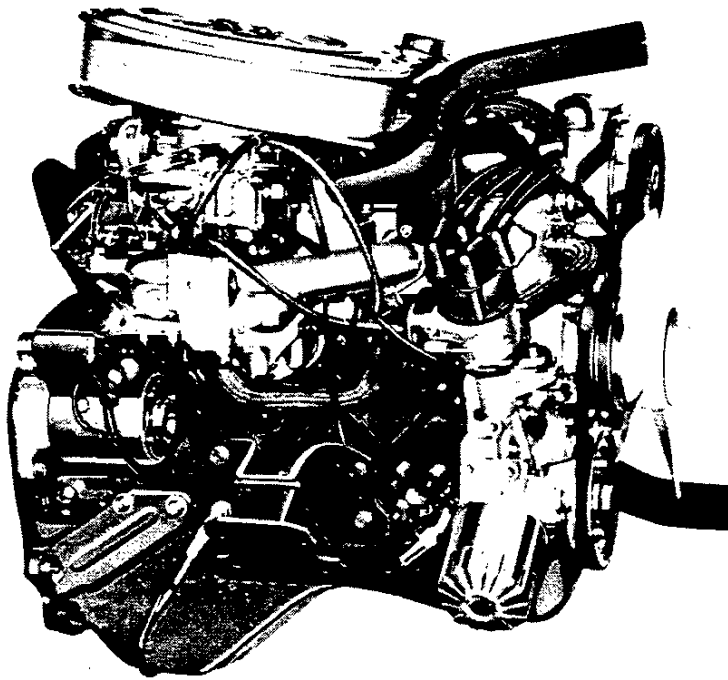
e

1



LUV 4-CYLINDER

Ordering Code L10



Applications

Standard: LUV Pickup
 Optional: None

Basic Specifications

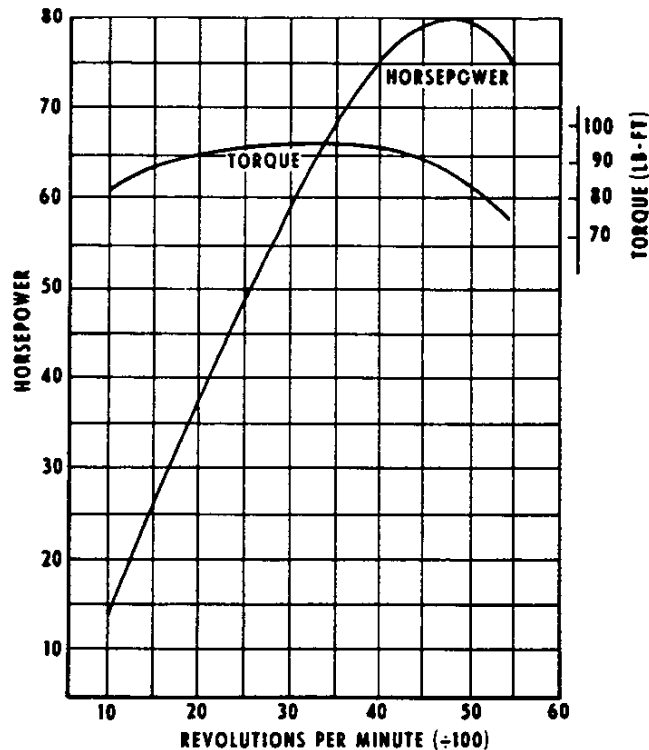
Engine type Overhead Cam In-line 4
 Piston displacement 110.8
 Bore & stroke (nominal) 3.31 x 3.23
 Compression ratio 8.5:1
 Carburetor type 2-barrel
 Exhaust Single

Test Procedures

These curves represent full throttle performance as obtained from a dynamometer test simulating actual operating conditions when the engine is in the vehicle, with ratings corrected to barometric pressure of 29.00" mercury and 85°F dry air.

Engine Ratings

SAE net horsepower (85°F) 80 @ 4800 rpm
 SAE net torque, lb-ft (85°F) 95 @ 3000 rpm





2

3



LUV 4-CYLINDER ENGINE

SPECIFICATIONS

LUV 4 Cyl.	
Oil Capacity (qts)	
With filter change	4.2
W/o filter change	3.8
Oil Filter	
Standard	Full flow; throwaway type
Capacity (pt)	0.8
Oil Pump	
Type	Trochoid
Capacity (gpm)	3.70 @ 1400 rpm
Normal Pressure (psi)	57
Pistons	
Type	Cam-ground
Material	Aluminum alloy
Skirt	Tin plated full
Head	Concave
Piston Pins	
Type	Semi-Floating
Material	Case hardened steel
Piston Rings	
Compression Rings	
Number	2
Type	1st: taper face; 2nd: taper face, under-cut
Material	1st: Chrome plated cast iron; 2nd: Cast Iron
Oil Control Rings	
Number	1
Type	Multi-piece
Material	Chrome plated steel
Thermostat	Fuji-Thompson Wax pellet; 180°F
Valve Train	
Type	Overhead cam rocker arm acting
Tappets	Mechanical—adjustable
Valve Lash	In: .006 Exh: .010
Intake Valves	
Material	Alloy steel and chrome plated stems
Head Diameter (in)	1.665—1.669
Face Coating	None
Seats	Sintered iron inserted in cylinder head
Exhaust Valves	
Material	Alloy steel and chrome plated stems
Head Diameter (in)	1.335—1.339
Face Coating	None
Seats	Sintered iron inserted in cylinder head
Rotators	None
Water Pump	
Type	Centrifugal
Capacity (gpm)	4.2 @ 6000 rpm

LUV 4-CYLINDER ENGINE

SPECIFICATIONS

		LUV 4-Cyl.
Basic Description		Four-cylinder in-line; overhead cam with cast iron block and aluminum cylinder head
Displacement (cu in)		110.8
Bore & Stroke (in)		3.31 x 3.23
Compression Ratio		8.5:1
Firing Order		1 3 4 2
SAE Net Horsepower @ rpm		80 @ 4800
SAE Net Torque (lb-ft) † rpm		95 @ 3000
Air Cleaner		Replaceable wet-paper element
Bearings, Camshaft		Steel-backed babbitt or copper lead alloy
Inlet Valve	Opens	21° BTDC
	Closes	65° ABDC
Exhaust Valve	Opens	55° BBDC
	Closes	20° ATDC
Inlet Duration Ramp		266°
Exhaust Duration Ramp		255°
Carburetor		
Type		2-Barrel downdraft
Make		Hitachi; DCP-340
Venturi ID (in)		Pri.—.9; sec.—1.1
Throttle Bore (in)		Pri.—1.181; sec.—1.339
Choke Control		Automatic
Connecting Rods		
Material		Forged steel
Length (in)		5.2557-5.2561
Bearings		Steel-backed with tri-metal
Crankcase Ventilation		Closed positive
Crankshaft		
Material		Heat-treated forged steel
Number of Counterweights		4
Main Journals (in)		2.2016-2.2022
Crankpin Journals (in)		1.9262-1.9268
Torsional Damper		None
Bearings		Steel-backed with tri-metal
Distributor		Nippon Denso Co., Ltd.; centrifugal & vacuum advance
Fuel Filters		
Carburetor		Bronze mesh screen
Fuel Tank		None
Lubrication System		Full pressure
Main Bearings		Direct pressure
Camshaft Bearings		Direct pressure
Connecting Rods		Direct Pressure
Valves & Tappets		Gravity
Cylinder Walls		Splash
Piston Pins		Splash

TRANSMISSIONS

EL CAMINO

3-, 4-SPEED TRANSMISSIONS

Type	Chevrolet 3-Speed	Chevrolet 4-Speed
Applications	200-2 V6	305-2, 350-4 V8
Synchronized Speeds:	All forward	
Gear Ratios:		
First	3.50	2.85
Second	1.81	2.02
Third	Direct	1.35
Fourth	—	Direct
Reverse	3.62	2.85
Gears:		
Type	Helical	
Material	Forged steel; hardened	
Gearshift Control:		
Type	Manual linkage	
Location	Floor	

LUV PICKUP

4-SPEED TRANSMISSION

Type	LUV 4-Speed
Applications	LUV 4-Cylinder
Synchronized Speeds:	All forward
Gear Ratios:	
First	3.51
Second	2.18
Third	1.42
Fourth	Direct
Reverse	3.83
Gears:	
Type	Helical
Material	Forged steel; hardened
Gearshift Control:	
Type	Manual linkage
Location	Floor

EL CAMINO, LUV PICKUP

AUTOMATIC TRANSMISSION

Type	Automatic	
Applications	LUV 4-cylinder	200-2 V6 231-2 V6 305-2 V8 350-4 V8
Drive (Maximum Torque Multiplication)	6.08:1	5.04:1
Cooling	Water	
Gearshift Control:		
Type	Manual linkage	
Location	Floor	Floor



4
1
4

