

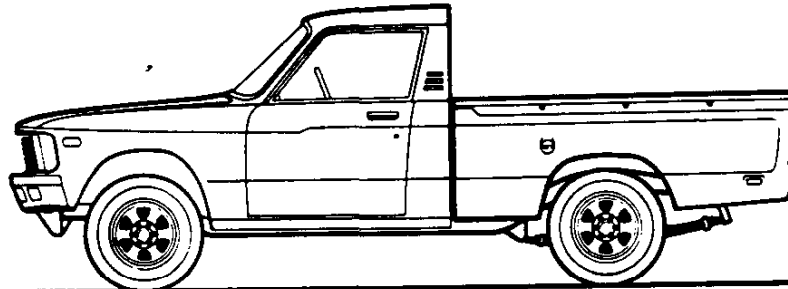
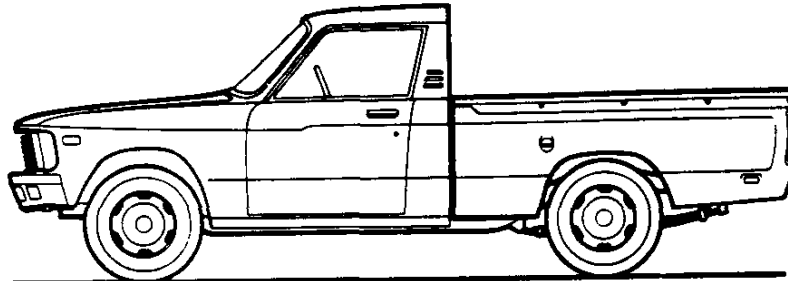
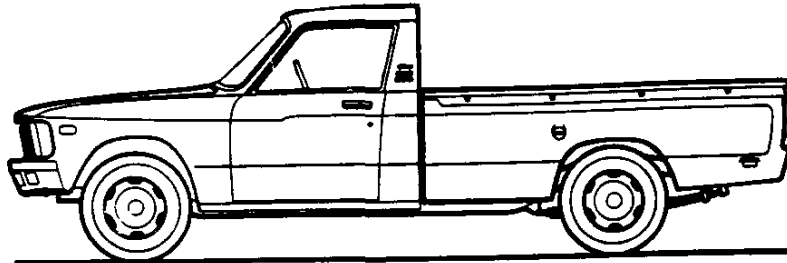


1980 -- ORIGINAL

LUV PICKUP & CHASSIS-CAB

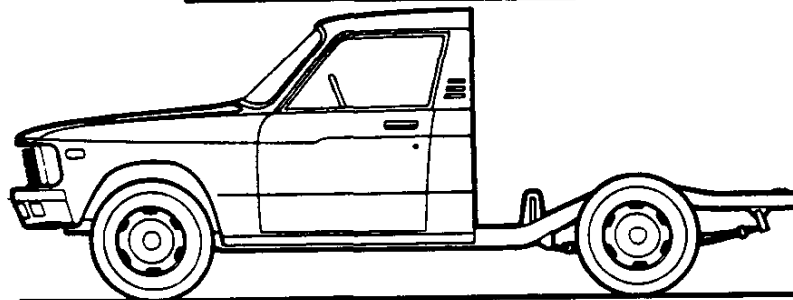
(SERIES 10)

PICKUP MODEL SELECTOR



SERIES	MODEL NUMBER		BODY ORDERING CODE
	6' BOX	7 1/2' BOX	
10 (2 Wheel Drive)	CL10503	CL10803	E63
10 (4 Wheel Drive)	CR10503	—	E63

CHASSIS-CAB MODEL SELECTOR



SERIES	MODEL NUMBER	BODY ORDERING CODE
	34.5' CA	
10	CL10503	ZW9

LUV PICKUP & CHASSIS-CAB

(SERIES 10)

STANDARD SPECIFICATIONS

(See Blue Tab Section for Specification Details)

	CL10503-CL10803	CR10503
Engine	110.8 cu. in. (1817 cc)	
Base equipment—4 cyl.		
Clutch	7.87" O. D.	8.46" O. D.
Air Filter	Wet-paper element; replaceable	
Oil Filter	Throwaway type	
Exhaust System	Single; outside zinc-plated	
Emission Control Systems	Meet Government Requirements	
Suspension, Front	Independent; Torsion Bar	Independent; Driving Axle, Torsion Bar
Capacity—102.4' WB models	1660 lb.	1830 lb.
—117.9' WB models	1830 lb.	—
Axle Ratio	—	4.10
Torsion Bars @ Ground—102.4' WB models	830 lb. ea.	915 lb. ea.
—117.9' WB models	915 lb. ea.	—
Stabilizer Bar—102.4' WB models71" dia.	.87" dia.
—117.9' WB models87" dia.	—
Shock Absorbers	Direct, double acting; 1" dia.	
Hubs—Free Wheeling	—	Standard
Suspension, Rear	2-stage Leaf springs/Hypoid 3500 lbs.	
Axle Capacity		
Axle Ratio	3.73†	4.10
Springs @ Ground—102.4' WB Pickup	1040 lb. ea.	
—All other models	1325 lb. ea.	
Shock Absorbers	Direct, double acting; 1" dia.	
Brakes	Hydraulic; Self-adjusting	
Front	Disc; 9.84" Rotor	
Rear	Drum; 10" Dia.	
Booster	Bendix; vacuum	
Parking	Cable to rear wheels	
Electrical	12 volt; 50 amp. hr.	
Battery	35 amp.	
Generator		
Frame	Box section; ladder type	
Fuel Tank (nominal capacity)	13 gal.	
Steering Gear Type	Recirculating ball	
Transmission	Fully synchronized 4-speed	
Shift location	Floor	
Transfer Case	—	2-speed ⁵⁷
Tires (tubeless)	(5) E78-14B (4PR)	(5) F70-14B (4PR) White Lettered
Tire Carrier, Spare	Winch/chain unit; mounted to underside of pickup box at rear*	
Wheels	(5) Disc; 14" x 5"	(5) Styled; 14" x 5.5"

*On Chassis-Cab models, the spare tire is bolted to the rear frame cross member and a box containing the winch and chain unit is placed in the cab. (On California 4WD models, the spare tire is mounted on the front of the pickup box.)

†4.10 ratio on Chassis-Cab models.

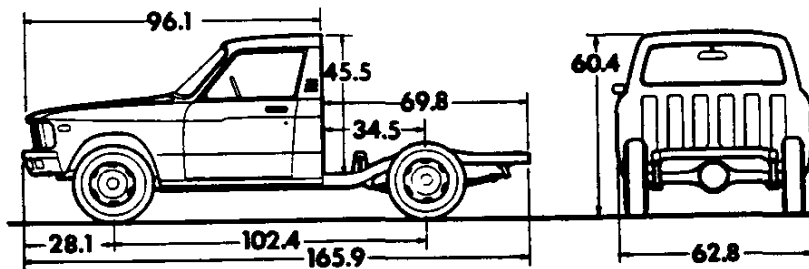
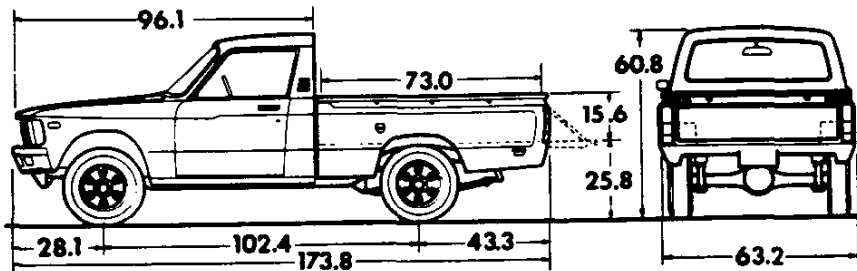
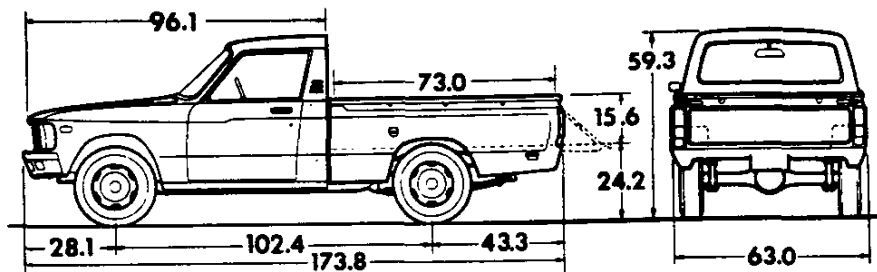
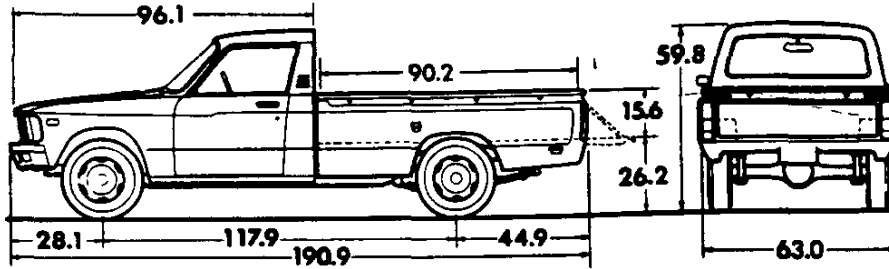
LUV PICKUP & CHASSIS-CAB

(SERIES 10)

Body Ordering Codes:

Pickup—E63

Chassis-Cab—ZW9



Cab to Axle (CA)

102.4" WB—34.5"

117.9" WB—50.0"

Model	Body Ordering Code	Engine No. Cyl.	Curb Weight (lb)			Model Weights (lb) *			Ground Clearance (in) *
			Front	Rear	Total	Front	Rear	Total	Minimum
CL10503	E63	4	1340	1085	2425	1485	1240	2725	7.5
CR10503 (4-Wheel Drive)	E63	4	1496	1125	2621	1641	1280	2921	7.5
CL10503	ZW9	4	1370	860	2230	1515	1015	2530	7.3
CL10803	E63	4	1400	1115	2515	1565	1250	2815	7.5

* Dimensions with standard equipment, unloaded.

* Model Weights include curb weight plus occupants (standard seating capacity x 150 lbs.) Total Model Weight may vary as much as ±150 lbs. to allow for production build variation.

LUV PICKUP & CHASSIS-CAB (SERIES 10)

GVWR SELECTOR

REFER TO FOREWORD—GENERAL INFORMATION SECTION, PAGE 11 FOR INCOMPLETE VEHICLE CURB WEIGHT AND FRONTAL AREA DATA.

Maximum Ratings		Minimum Equipment Required for GVW Rating			
GVW Rating (lb)	▲GAWR (lb)		Tires, Front	Tires, Rear	Chassis Equipment
	Front	Rear			
3550◆	1660	2080	E78-14B (4PR)	E78-14B (4PR)	Standard
3930@	1660	2540			
4150■	1830	2540			
3750●	1830	2080	F70-14B (4PR)	F70-14B (4PR)	Standard

† GAWRs shown are the maximum for each axle with the equipment listed.

▲GAWR—Gross Axle Weight Rating.

◆102.4 in. wheelbase pickup models only.

@102.4 in. wheelbase chassis-cab models only.

■117.9 in. wheelbase models only.

●4-Wheel-Drive model only.

POWER TEAMS

ALL STATES

REFER TO FOREWORD—GENERAL INFORMATION SECTION, PAGE 11 FOR INCOMPLETE VEHICLE CURB WEIGHT AND FRONTAL AREA DATA.

ENGINE	TRANSMISSION	REAR AXLE	
Type and Code	Type	Capacity (lb)	Ratio
■110.8 2-bbl 4 cyl. (Standard Engine)	←Speed (Std)—MM4	3500	●3.73—2 WD; 4.10—4 WD
	▲Automatic—MX1		4.10

▲Not available on 4-wheel-drive models.

■Available for registration in the state of California when California Emission Certification is ordered.

●4.10 ratio on Chassis-Cab models.

*Chassis-Cab model requires California Emission Certification YF5.

ENGINE RATINGS

SAE Net Ratings @ 85°F	110.8 2-bbl 4 cyl.
Net Horsepower.....	80 @ 4800 rpm
Net Torque, lb-ft.....	95 @ 3000 rpm

LUV PICKUP AND CHASSIS-CAB SERIES 10 VEHICLES WITH STANDARD EQUIPMENT AT POINT OF ENTRY

Prices shown are effective with initial shipments of Series 10 LUV motor vehicles

Description	Model Number	Body Code	Wheel Base	Factory D&H(s)	List Price	Mfr's Suggested Retail Price*	Group Number
◆ 1.8 Litre (110.8 Cu. In.) 2 BBL Engine-Engine Ordering Code L10							
2-Wheel Drive							
Pickup.....	CL10503	E63	102.4"	11.35	4601.00	4612.35	37
Pickup.....	CL10803	E63	117.9"	11.35	4776.00	4787.35	37
Chassis-Cab.....	CL10503	ZW9	102.4"	11.35	4437.00	4448.35	37
4-Wheel Drive							
Pickup.....	CR10503	E63	102.4"	14.10	6369.00	6383.10	37

★ Manufacturer's Suggested Retail Prices do not include applicable destination charges, state and local taxes, license fees, optional equipment or accessories or special items or services.

◆ Refer to Power Team Chart for California Emission Certification Requirements.

OPTIONS AND ACCESSORIES WHEN INSTALLED BY CHEVROLET

Prices shown are effective with initial shipments of Series 10 LUV motor vehicles

Description	Added Weight (F R)	Option Number	Factory D&H(s)	List Price	Mfr's Suggested Retail Price◇
Air Conditioning: Pickup only.....	79 2	C60	N.A.	543.00	543.00
Bumper Equipment:					
<i>Bumper, Rear Step, Chromed</i>					
102.4" WB.....	-13 42	V42	N.A.	110.00	110.00
117.9" WB.....	-7 36	V42	N.A.	110.00	110.00
<i>Bumper, Rear Step, Painted.</i>					
102.4" WB.....	-16 51	V43	N.A.	88.00	88.00
117.9" WB.....	-9 44	V43	N.A.	88.00	88.00
<i>Guards, Front Bumper, Chromed</i>	8 -2	V31	N.A.	34.00	34.00
Decals: Sport Stripes. Pickup only. Not available when DL1 Decals and Stripes are specified.					
102.4" WB.....	1 1	D88	N.A.	111.00	111.00
117.9" WB.....	1 1	D88	N.A.	120.00	120.00
Decals and Stripes: CR10503 only Includes 4 x 4 decals and stripes on hood, rear side pickup box panels and tailgate.....					
	1 1	DL1	N.A.	111.00	111.00
Emission Systems: Dealer Note - One of the following emission options must be specified.					
<i>California Emission Requirements.</i> Includes all testing, equipment and /or certification necessary for registration in the State of California. Required on Chassis-Cab models					
102.4" WB only.....	15 10	YF5	N.A.	100.00	100.00
102.4" WB, Chassis Cab only.....	0 0	YF5	N.A.	100.00	100.00
117.9" WB, Pickup only.....	16 9	YF5	N.A.	100.00	100.00
<i>Standard Emission Equipment.</i> Not available on Chassis-Cab models					
Exterior Decor Package: Includes belt line, rear window windshield and roof drip moldings. Also includes full wheel covers on CL10503 and CL10803. Includes Chrome center hubs on CR10503.....					
	4 4	YA1	N.A.	89.00	89.00
Mikado: Includes Mikado nameplate on glove compartment door and side panels at rear; 3-spoke steering wheel with stitched leather-grained vinyl covered rim and Chevrolet emblem in center cap, shift lever knob with stitched leather-grained vinyl cover, door trim panels with deluxe center insert and carpet kick panels, color-keyed carpeting, deluxe door actuated dome lamp, lighted ash tray and dual horns.					
With Bench Seat.....	6 2	YH9	N.A.	206.00	206.00
With Bucket Seats. Also includes Console.....	6 6	YH9	N.A.	319.00	319.00
Mirrors, Exterior: Below-Eye-Line-Type. 6" x 6". Stainless Steel.					
102.4" WB.....	4 2	DG4	N.A.	55.00	55.00
117.9" WB.....	5 1	DG4	N.A.	55.00	55.00

(a) D & H Charges on vehicle and optional equipment include reimbursement to Chevrolet Motor Division for any tax that it has paid, incurred or agreed to pay thereon.

◇ State and local taxes not included.

LUV

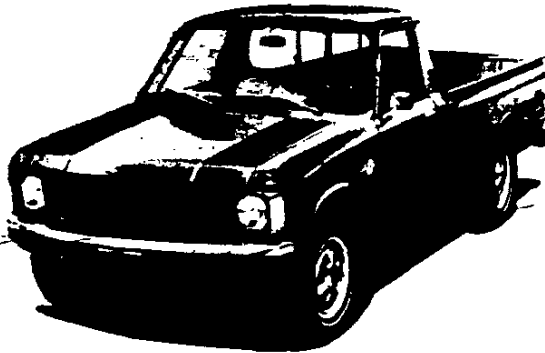
OPTIONS AND ACCESSORIES WHEN INSTALLED BY CHEVROLET

Prices shown are effective with initial shipments of Series 10 LUV motor vehicles

Description	Added Weight (F R)	Option Number	Factory D&H(a)	List Price	Mfr's Suggested Retail Price◇
OTHER OPTIONS					
Radio Equipment: Pushbutton.					
AM	3 1	U63	N.A.	89.00	89.00
AM /FM	3 1	U69	N.A.	159.00	159.00
Tires:					
<i>(5) E78-14 /B (4 PR) Tubeless</i>					
<i>Passenger Type Blackwall</i>					
Front (Standard)	0 0	XEG	<i>NO ADDITIONAL CHARGE</i>		
Rear (Standard)	0 0	YEG	<i>NO ADDITIONAL CHARGE</i>		
Spare (Standard)	0 0	ZEG	<i>NO ADDITIONAL CHARGE</i>		
<i>Passenger Type White Stripes. Available pickup series only.</i>					
Front	0 0	XEH	.04	16.00	16.04
Rear	0 0	YEH	.04	16.00	16.04
Spare	0 0	ZEH	.02	8.00	8.02
<i>(5) F70-14 /B Tubeless.</i>					
<i>All Terrain Bias Belted White Lettered CR10503 only</i>					
Front (Standard)	0 0	XAH	<i>NO ADDITIONAL CHARGE</i>		
Rear (Standard)	0 0	YAH	<i>NO ADDITIONAL CHARGE</i>		
Spare (Standard)	0 0	ZAH	<i>NO ADDITIONAL CHARGE</i>		
Transmission: Automatic Includes Console.					
102.4" WB	30 10	MX1	N.A.	378.00	378.00
117.9" WB	31 9	MX1	N.A.	378.00	378.00
Window: Sliding Rear	1 1	A28	N.A.	83.00	83.00

(a) D & H Charges on vehicle and optional equipment include reimbursement to Chevrolet Motor Division for any tax that it has paid, incurred or agreed to pay thereon.
 ◇ State and local taxes not included.

LUV PICKUP & CHASSIS-CAB SERIES 10 REGULAR PRODUCTION OPTIONS SPORTS DECAL PACKAGE (RPO D88)



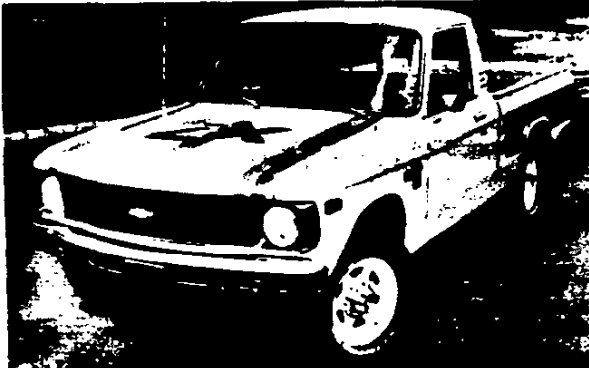
Series 10 LUV 2-wheel-drive pickup with the available Sports Decal Pkg.: Exterior Decor Pkg. • Mikado Trim Pkg. • Sliding rear window • Chrome rear step bumper • Radio • White-stripe tires • Front bumper guards.

Available on both 2- and 4-wheel-drive LUV pickups, the Sports Decal Package is comprised of a tri-tone stripe on the sides, hood and tailgate. The package is color-keyed to the truck's interior and offers two exterior striping color combinations to match three interior colors.

The exterior striping and interior color combinations available include: blue interior with light blue, medium blue and dark blue striping; red interior with light orange, orange and red striping; and saddle interior with light orange, orange and red striping.

The Sports Decal Package is not available with the 4x4 Decal Package.

4x4 DECAL PACKAGE (RPO DL1)



Series 10 LUV 4-wheel-drive pickup with the available 4x4 Decal Pkg.: Exterior Decor Pkg. • Sliding rear window • Radio.



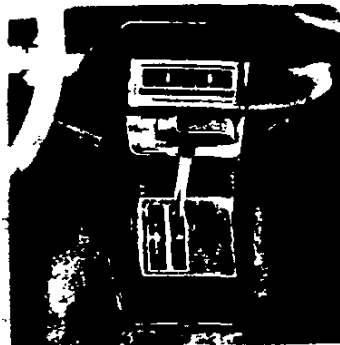
Series 10 LUV 4-wheel-drive pickup with the available 4x4 Decal Pkg.: Exterior Decor Pkg. • Painted step bumper • Radio.

Available only on the 4-wheel-drive LUV pickup, the 4 x 4 Decal Package is a bi-tone stripe design on the hood, cargo box sides and tailgate with a tri-tone 4x4 decal on the hood and cargo box sides. The package is color-keyed to the truck's interior and offers two exterior stripe and decal color combinations to match three different interior colors.

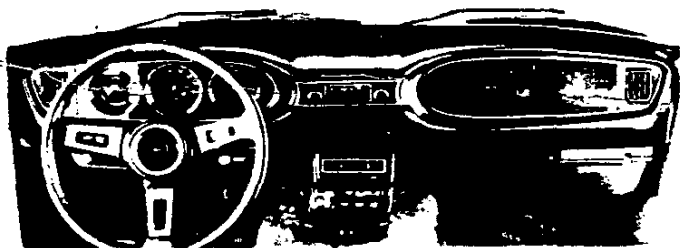
The exterior striping and decal and interior color combinations available include: blue interior with light blue, dark blue and black striping; red interior with orange, red and black striping; and saddle interior with orange, red and black striping and decal. The 4x4 Decal Package is not available with the Sports Decal Package.

AUTOMATIC TRANSMISSION (RPO MX1)

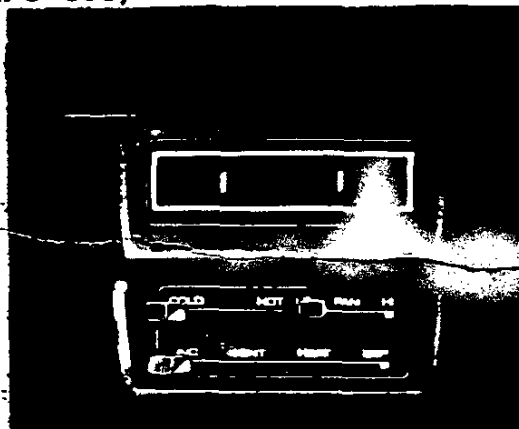
A 3-speed fully automatic transmission is available on all 2-wheel-drive LUV models. It includes a transmission lever console. Woodgrained faceplate shown is included with Mikado trim. Standard base plate is black.



**LUV PICKUP & CHASSIS-CAB
SERIES 10 REGULAR PRODUCTION OPTIONS
AIR CONDITIONING (RPO C60)**

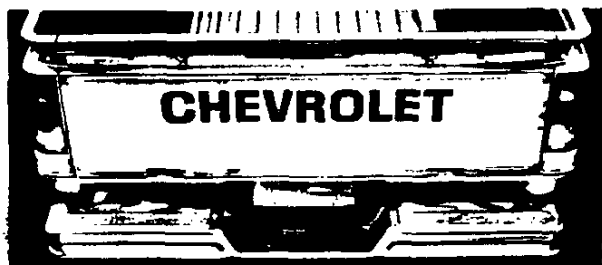


Mikado instrument panel with air conditioning and AM radio



Available on both 2- and 4-wheel-drive LUV pickups—all-season air conditioning includes additional floor insulation and a 40-amp alternator (50-amp on 4WD model). Cooled air is delivered through the left, right and center dash outlets and foot outlets.

**REAR STEP BUMPERS CHROMED (RPO V42),
PAINTED (RPO V43)**



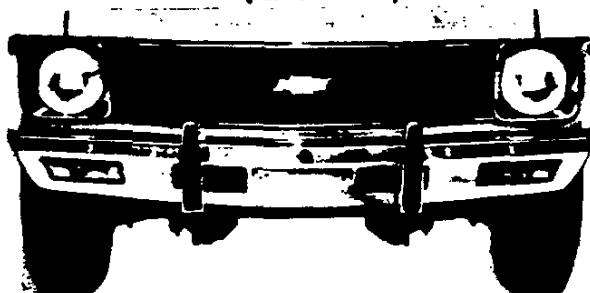
Chrome rear step bumper



Painted rear step bumper

Available on LUV pickups only, both chrome and painted step bumpers provide skid-resistant footing for loading and unloading and are predrilled for a trailer hitch ball and safety chains.

**FRONT CHROME BUMPER GUARDS
(RPO V31)**



For improved appearance and bumper protection, these guards are chrome plated and include rubber impact strips.

CALIFORNIA EMISSION CERTIFICATION (RPO YF5)

Includes all testing, equipment and/or certification necessary for registration in the State of California.

LUV PICKUP & CHASSIS-CAB SERIES 10 REGULAR PRODUCTION OPTIONS EXTERIOR DECOR PACKAGE (RPO YA1)



On the 2-wheel-drive LUV, the Exterior Decor Package includes bright moldings on the windshield, roof drip rail, rear window and belt line plus bright full-wheel covers.

On the 4-wheel-drive LUV model, the package includes bright moldings on the windshield, roof drip rail, rear window and belt line, plus bright hub covers. Bright lug nuts are standard on the 4-wheel-drive LUV.

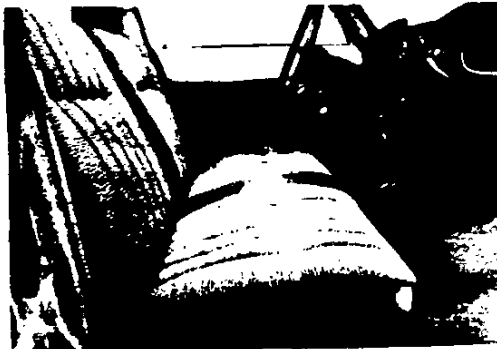


Bright full wheel covers (2WD)



Styled wheels with bright hub covers (4WD)

MIKADO TRIM PACKAGE (RPO YH9)

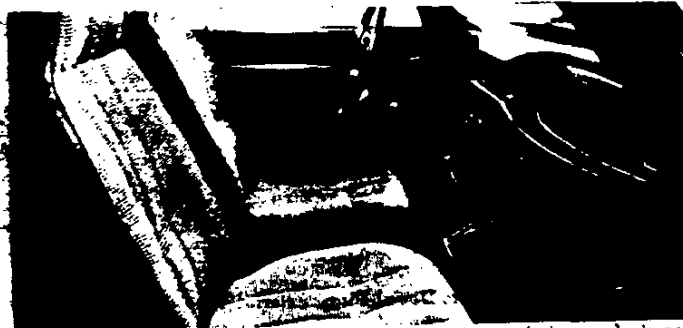


Mikado deluxe cloth bench seat



Mikado high-back bucket seats

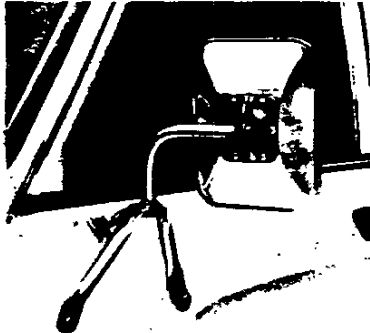
The Mikado package is available on all LUV models. It includes the Mikado nameplate on the glove-compartment door and cargo-box side panels at rear (pickup models); a three-spoke steering wheel with stitched leather-grained vinyl-covered rim and Chevrolet emblem in center cap; shift-lever knob with stitched leather-grained vinyl cover (manual transmission only); door trim panels with deluxe center insert featuring carpet kick panels; color-keyed carpeting; seat belts with automatic locking retractors; deluxe, door-actuated dome lamp; lighted ashtray, dual horns and custom cloth bench seat. Red cloth high-back bucket seats are also available (RPO LRR4) with black white or red exteriors. The bucket seats include a transmission lever console on either the manual or automatic transmission 2-wheel-drive models.



Mikado interior with deluxe cloth bench seat, automatic transmission and air conditioning

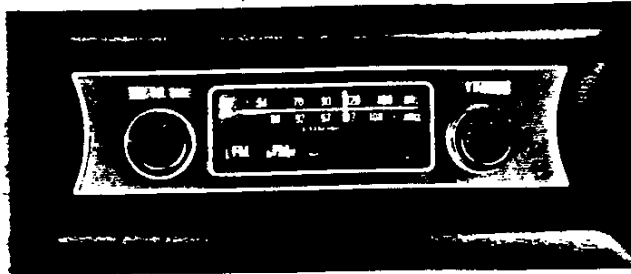
LUV PICKUP & CHASSIS-CAB SERIES 10 REGULAR PRODUCTION OPTIONS

BELOW EYELINE EXTERIOR MIRRORS (RPO DG4)



Both stainless steel mirrors provide the driver with improved rear vision.

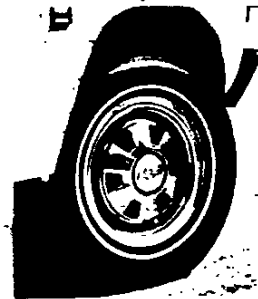
RADIOS, AM (RPO U63), AM/FM (RPO U69)



AM/FM radio

Both radio options are fully transistorized and both include an instrument-panel-mounted speaker plus a fender-mounted antenna.

WHITE-STRIPE TIRES FRT. (RPO XEH) RR. (RPO YEH) SPARE (RPO ZEH)



White-stripe tires with bright full wheel covers

Available on 2-wheel-drive LUV pickup models only. These passenger-type E78-14/B (4PR) tires improve vehicle appearance.

SLIDING REAR WINDOW (RPO A28)



Series 10 LUV with sliding rear window plus the exterior Decor Pkg. and Mikado Decor Pkg. with high-back bucket seats.

Available on all LUV models, this window provides additional ventilation when open and locks tightly when closed. It is offered in clear glass only.

COMBINATIONS OF VARIOUS PRODUCTION OPTIONS



Series 10 LUV 2-wheel-drive pickup with the available Sports Decal Pkg.; Exterior Decor Pkg. • Mikado Trim Pkg. • Sliding rear window • Chrome rear step bumper • White-stripe tires.

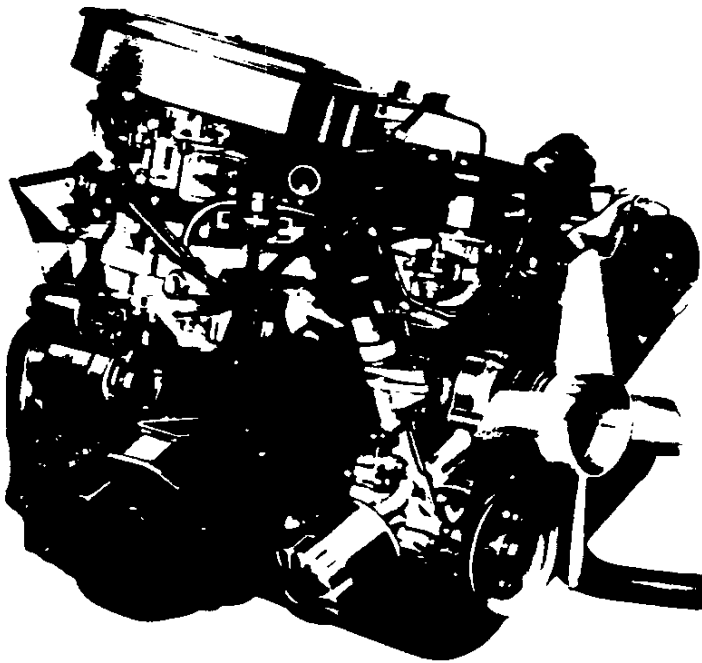
ENGINE & COOLING

INDEX

ENGINES	Page
LUV 4-Cylinder	2
SPECIFICATIONS—LUV 4-Cylinder ENGINE	3, 4
3.8 LITER (229 2-bbl) V6 ENGINE (El Camine)	5
3.8 LITER (231 2-bbl) V6 ENGINE (El Camine)	6
4.1 LITER (250 2-bbl) HIGH TORQUE SIX	7
4.8 LITER (292 1-bbl) HIGH TORQUE SIX	8
SPECIFICATIONS—4.1L/250 & 4.8L/292 SIX ENGINES	9, 10
4.4 LITER (267 2-bbl) V8 ENGINE (El Camine)	11
5.0 LITER (305 4-bbl) V8 ENGINE (El Camine)	12
5.0 LITER (305 2-bbl) HIGH TORQUE V8	13
5.7 LITER (350 4-bbl) HIGH TORQUE V8	14, 15
SPECIFICATIONS—5.0L/305 & 5.7L/350 V8 ENGINES	16, 17
5.7 LITER (350 cu. in.) V8 DIESEL	18
6.6 LITER (400 4-bbl) HIGH TORQUE V8	19, 20
SPECIFICATIONS—6.6L/400 V8 ENGINES	21, 22
7.4 LITER (454 4-bbl) HIGH TORQUE V8	23
SPECIFICATIONS—7.4L/454 V8 ENGINES	24, 25
 COOLING SYSTEMS	
SPECIFICATIONS—STANDARD	26
SPECIFICATIONS—OPTIONAL	27, 28, 29
 FUEL TANKS	
SPECIFICATIONS	30
 EMISSION CONTROLS	
EMISSION CONTROL EQUIPMENT	31, 32, 33
 LPG CONVERSION	
LPG CONVERSION INSTRUCTIONS	34

LUV 4-CYLINDER

Ordering Code L10



Applications

Standard: LUV
Optional: None

Basic Specifications

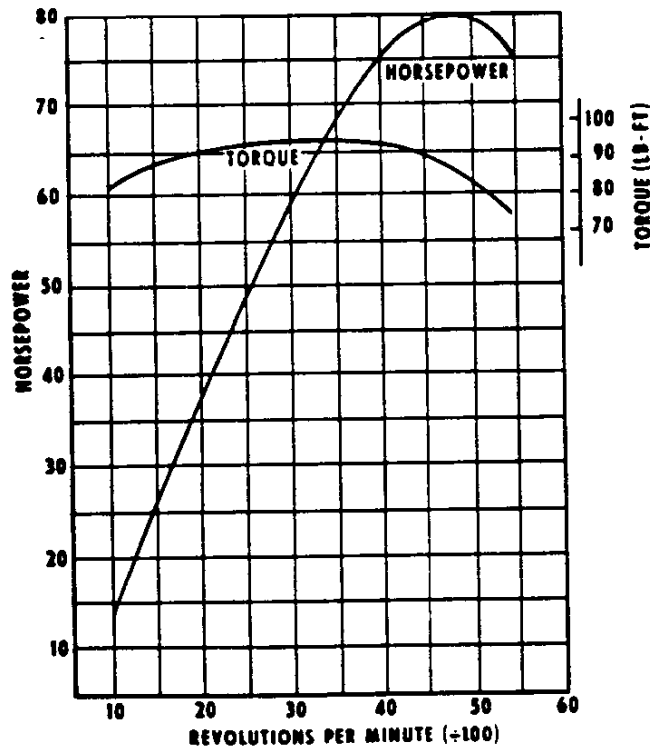
Engine type..... Overhead Cam In-line 4
Piston displacement (Liter/Cu. In.)..... 1.8/110.8
Bore & stroke (nominal)..... 3.31 x 3.23
Compression ratio..... 8.5:1
Carburetor type..... 2-barrel
Exhaust..... Single

Test Procedures

These curves represent full throttle performance as obtained from a dynamometer test simulating actual operating conditions when the engine is in the vehicle, with ratings corrected to barometric pressure of 29.00" mercury and 85°F dry air.

Engine Ratings

SAE net horsepower (85°F)..... 80 @ 4800 rpm
SAE net torque, lb-ft (85°F)..... 95 @ 3000 rpm



LUV 4-CYLINDER ENGINE

SPECIFICATIONS

		LUV 4-Cyl.
Basic Description		Four-cylinder in-line; overhead cam with cast iron block and aluminum cylinder head
Displacement (Liter/Cu. In.)		1.8/110.8
Bore & Stroke (in)		3.31 x 3.23
Compression Ratio		8.5:1
Firing Order		1 3 4 2
SAE Net Horsepower @ rpm		80 @ 4800
SAE Net Torque (lb-ft) † rpm		95 @ 3000
Air Cleaner		Replaceable wet-paper element
Bearings, Camshaft		Steel-backed babbitt or copper lead alloy
Inlet Valve	Opens	21° BTDC
	Closes	65° ABDC
Exhaust Valve	Opens	55° BBDC
	Closes	20° ATDC
Inlet Duration Ramp		266°
Exhaust Duration Ramp		255°
Carburetor		
Type		2-Barrel downdraft
Make		Hitachi; DCH-340
Venturi ID (in)		Pri.—.9; sec.—1.1
Throttle Bore (in)		Pri.—1.181; sec.—1.339
Choke Control		Automatic
Connecting Rods		
Material		Forged steel
Length (in)		5.2557-5.2561
Bearings		Steel-backed with tri-metal
Crankcase Ventilation		Closed positive
Crankshaft		
Material		Heat-treated forged steel
Number of Counterweights		4
Main Journals (in)		2.2016-2.2022
Crankpin Journals (in)		1.9262-1.9268
Torsional Damper		None
Bearings		Steel-backed with tri-metal
Distributor		Nippon Denso Co., Ltd.; centrifugal & vacuum advance
Fuel Filters		
Carburetor		Bronze mesh screen
Fuel Tank		None
Lubrication System		Full pressure
Main Bearings		Direct pressure
Camshaft Bearings		Direct pressure
Connecting Rods		Direct Pressure
Valves & Tappets		Gravity
Cylinder Walls		Splash
Piston Pins		Splash

.UV 4-CYLINDER ENGINE

SPECIFICATIONS

	LUV 4 Cyl.
Oil Capacity (qts)	
With filter change	4.2
W/o filter change	3.8
Oil Filter	
Standard	Full flow; throwaway type
Capacity (pt)	0.8
Oil Pump	
Type	Trochoid
Capacity (gpm)	3.70 @ 1400 rpm
Normal Pressure (psi)	57
Pistons	
Type	Cam-ground
Material	Aluminum alloy
Skirt	Tin plated full
Head	Concave
Piston Pins	
Type	Semi-Floating
Material	Case hardened steel
Piston Rings	
Compression Rings	
Number	2
Type	1st: taper face; 2nd: taper face, under-cut
Material	1st: Chrome plated cast iron; 2nd: Cast Iron
Oil Control Rings	
Number	1
Type	Multi-piece
Material	Chrome plated steel
Thermostat	Fuji-Thompson Wax pellet; 180°F
Valve Train	
Type	Overhead cam rocker arm acting
Tappets	Mechanical—adjustable
Valve Lash	In: .006 Exh. .010
Intake Valves	
Material	Alloy steel and chrome plated stems
Head Diameter (in)	1.665—1.669
Face Coating	None
Seats	Sintered iron inserted in cylinder head
Exhaust Valves	
Material	Alloy steel and chrome plated stems
Head Diameter (in)	1.335—1.339
Face Coating	None
Seats	Sintered iron inserted in cylinder head
Rotators	None
Water Pump	
Type	Centrifugal
Capacity (gpm)	4.2 @ 6000 rpm

LUV PICKUP & CHASSIS-CAB

CAB & BODY FEATURES CAB CONSTRUCTION

January 14, 1980

LUV Pickup & Chassis-Cab—Page A

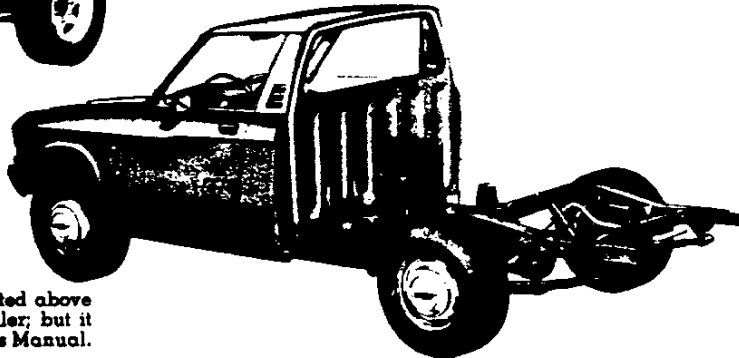
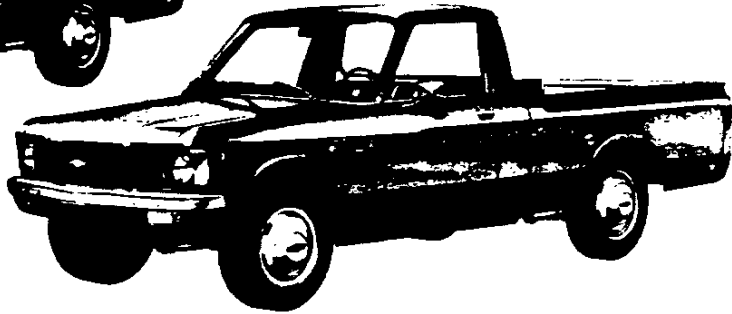
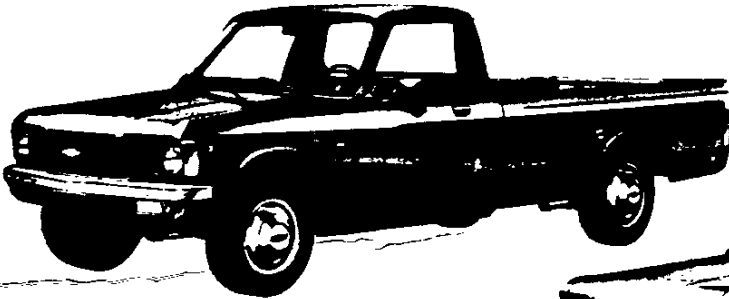
LUV PICKUP & CHASSIS-CAB

(SERIES 10)

STANDARD MODELS

The Standard Models Include the Following Items as Standard Equipment

EXTERIOR FEATURES



Note: The EGR fuel canister shown is temporarily mounted above the fuel tank, and may be relocated by the body installer; but it must remain in an upright position. Instructions in Owner's Manual.

● Bright appearance items:

- Chevrolet Emblem: Mounted center of grille with bright outer edge and ochre paint fill
- Chrome front bumper
- Chrome LH exterior mirror
- Door entry handles
- Door lock cylinder assemblies
- Fuel filler cap (Pickup models only)
- Grille: Bright upper and lower moldings
- Headlamp bezel bright trim
- LUV nameplates: Side of each front fender; 4 WD models include a "4 x 4" bright insert over "CHEVROLET" lettering (except when "4 x 4" decal package is ordered)

● Color: See Interior & Exterior Color Selection Chart

● Hub caps: Painted white with ochre and black paint fill in Chevrolet emblem (2 WD models only)

● Lettering "CHEVROLET" tailgate: Painted black on all exterior colors except Black, where the letters are painted white. (Pickup models only)

● 4 x 4 Decal: On tailgate (4 WD models only)

● Lights:

- Combination parking/direction/hazard: two front
- Combination rectangular rear lamps: Pickups—tail/stop in upper section w/red lens and reflector; hazard/direction signal in middle section w/amber lens; back-up lamp in lower section w/clear lens. Chassis-Cabs—wiring only to

end of frame for tail/stop/hazard/direction signal/back-up/license plate.

Headlamps: Two

License Plate: single rear (Pickup models only)

Side marker lights: two front (all models) and two rear (Pickup models only)

● Mirror: LH chrome fixed arm with rectangular head

● Pickup Box: All steel; 6 ft box—8 cargo hold-down eyes with 3 on outside edge of each side top rail and 2 on outside edge of tailgate top rail; 7.5 ft box—10 cargo hold-down eyes with 4 on outside edge of each side top rail and 2 on outside edge of tailgate top rail.

● Spare tire carrier: Mounted to pickup box with mechanical winch and chain for raising and lowering tire assembly. (The winch assembly, fuel filler neck, cap and attaching parts and spare tire and wheel are provided as loose items on Chassis-Cab models only) NOTE: On California 4 WD models, the spare wheel and tire are mounted in a vertical position inside the pickup box on the LH side of the forward wall.

● Tools: Mechanical jack, combination jack handle/wheel nut wrench/hub cap tool, and spare tire winch handle

● Wheels: 2 WD—Disc; Painted White 4 WD—Styled; Painted White

● Windshield Wipers and Washers: Electric, 2-speed wipers, coordinated washers

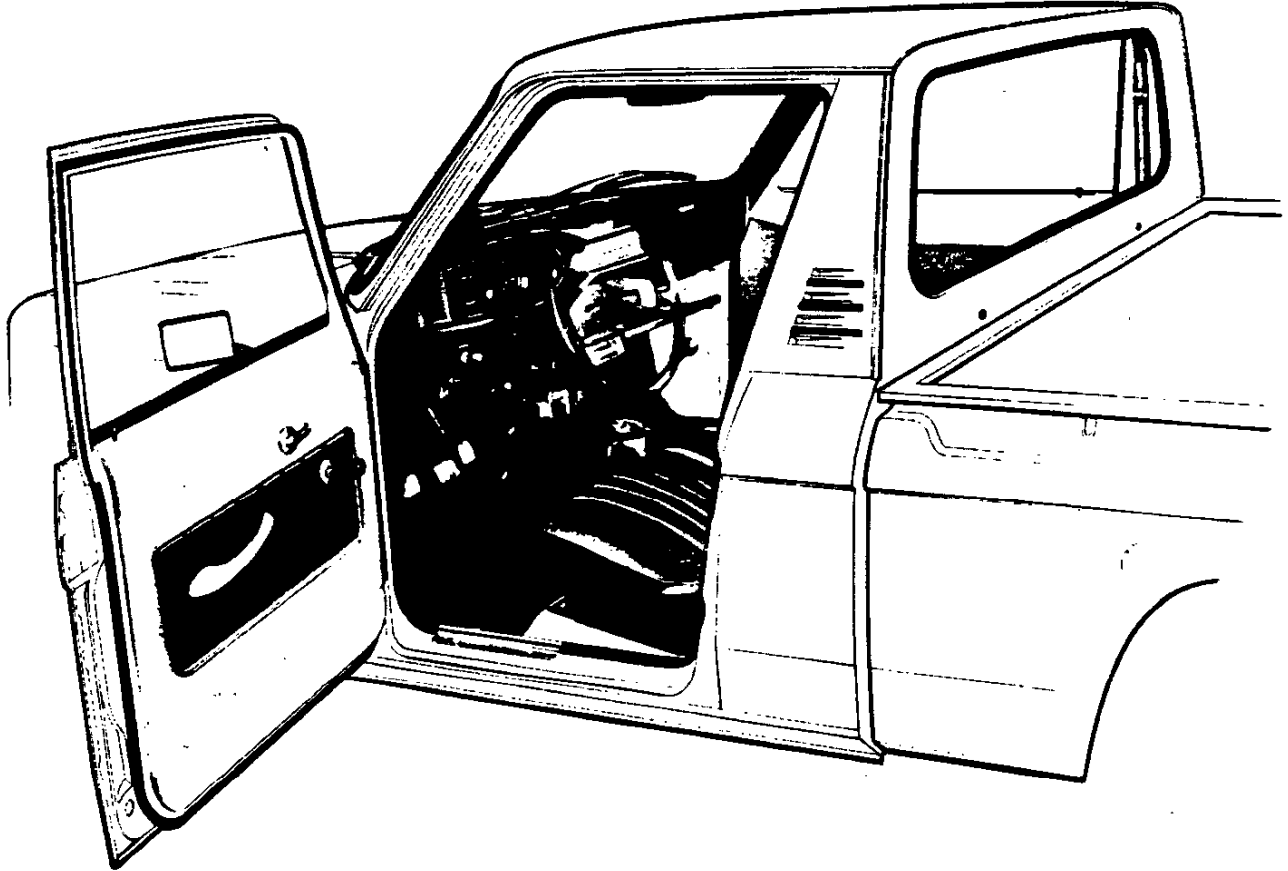
LUV PICKUP & CHASSIS-CAB

(SERIES 10)

STANDARD MODELS

The Standard Models Include the Following Items as Standard Equipment

INTERIOR FEATURES



- **Air Vents:** RH & LH instrument panel side and foot vents; individually controlled. Also flow-thru with air being exhausted through outlets located in upper rear quarter panels
- **Armrests:** Color-keyed RH & LH
- **Ashtray:** With cigar lighter
- **Colors:**
 - Painted interior: Same as exterior color choice
 - Trim—Color choice of saddle, red or blue
- **Dome Lamp** with switch; over rear window
- **Door Locks:** Inside pushbutton lock/release
- **Door Seals:** Constant-section sponge rubber
- **Door trim panels:** Embossed vinyl
- **Floor Mats:** Color-keyed molded vinyl
- **Glove Compartment:** In RH side of instrument panel, with door
- **Headliner:** Color-keyed vinyl
- **Heater and Defroster:** Outside air heater with manual water flow control for temperature; automatic blower operation with ignition switch on for power ventilation system
- **Instrument Panel:** Steel with vinyl-coated foam padding
- **Instruments:**
 - Gages: Speedometer, odometer, temperature and fuel
 - Switches: Exterior/instrument lights; dome light; wiper-washer; ignition; combination steering column switch for direction signals by moving lever up and down and headlight beams by moving lever fore and aft; hazard warning on steering column
 - Warning Lights: Generator, oil pressure, parking brake, direction signals, high beam and catalytic converter (California and Chassis-Cab models only)
- **Insulation and Sound Dendening**
- **Interior Lights:** Instrument controlled by main light switch and dome with separate switch
- **Mirror, Rearview:** Inside mounted to windshield header with impact break-away arm
- **Seat:** Full-width with latched forward fitting back for access to storage area behind seat; textured all-vinyl trim
- **Seat and Shoulder Belts:** Color-keyed; automatic locking and retractable for driver and passenger
- **Steering Wheel:** Molded plastic; 2-spoke; 15.7" diameter; center horn bar
- **Sunshades:** Color-keyed; LH and RH vinyl trimmed

LUV PICKUP & CHASSIS-CAB

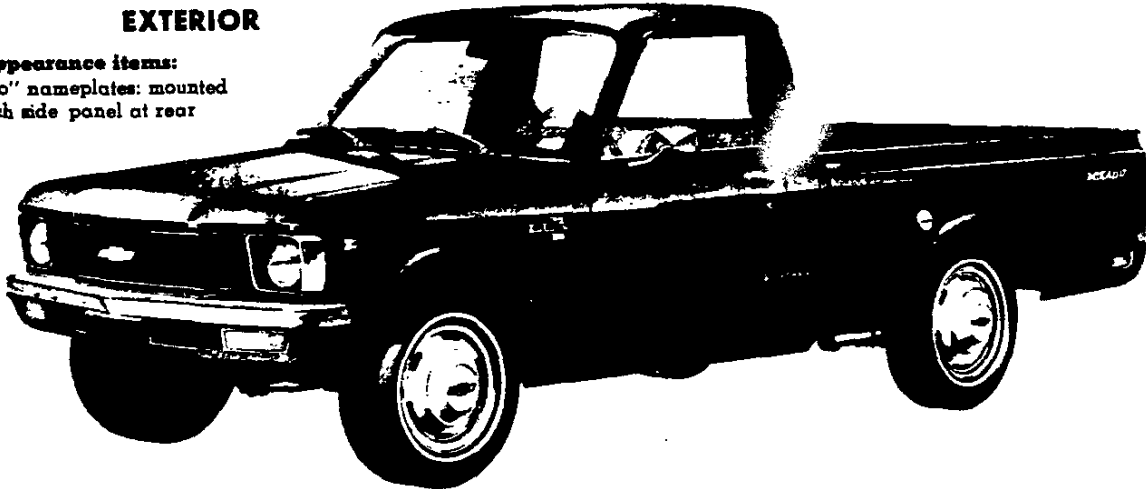
(SERIES 10)

MIKADO MODEL OPTION—RPO YH9

(This option includes all standard items plus the additions or substitutions listed below)

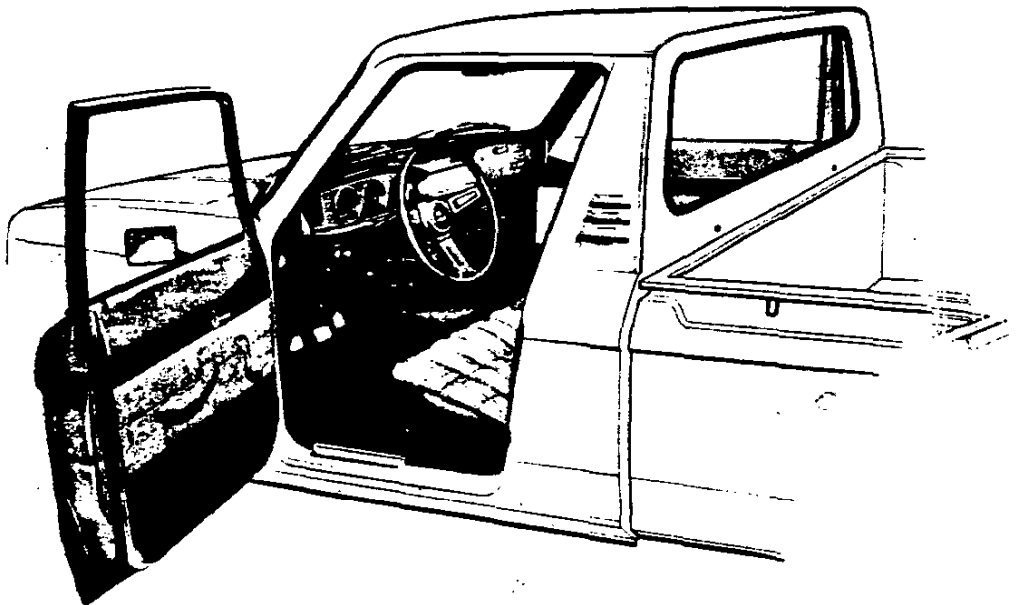
EXTERIOR

- **Bright appearance items:**
"Mikado" nameplates: mounted on each side panel at rear



INTERIOR

- **Ash Tray:** Lighted
- **Bright appearance items:**
"Mikado" nameplate mounted on glove box door
Chevrolet Emblem: in center cap of steering wheel
- **Carpeting:** Color-keyed
- **Dome Lamp:** Brighter lamp, with door-actuated switches
- **Door Trim Panels:** Deluxe cloth in blue, red or saddle and color-keyed carpet kick panel
- **Horn:** Dual note
- **Seat:** Choice of: 1) Deluxe cloth bench in blue, saddle or red, 2) Deluxe cloth bucket seats in red (with red, black or white exterior paint only and at added cost)
- **Shift Lever Knob:** Stitched, leather-grained urethane covered knob
- **Steering Wheel:** 3-spoke; stitched, leather-grained urethane covered rim

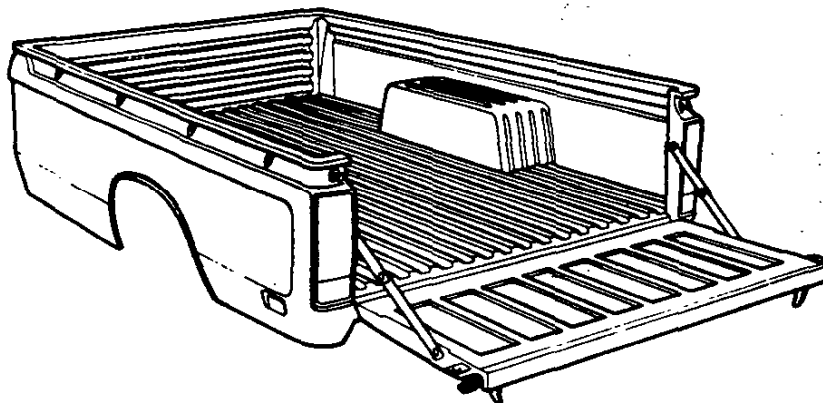
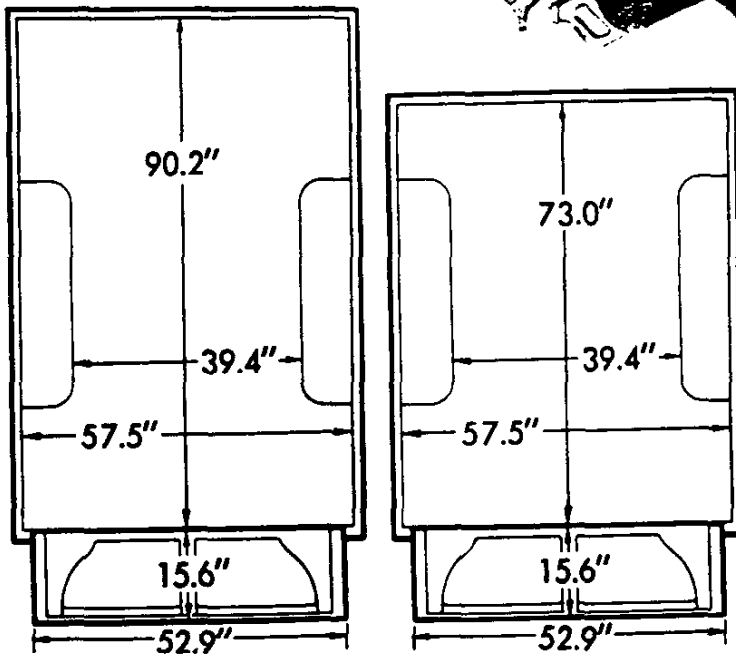
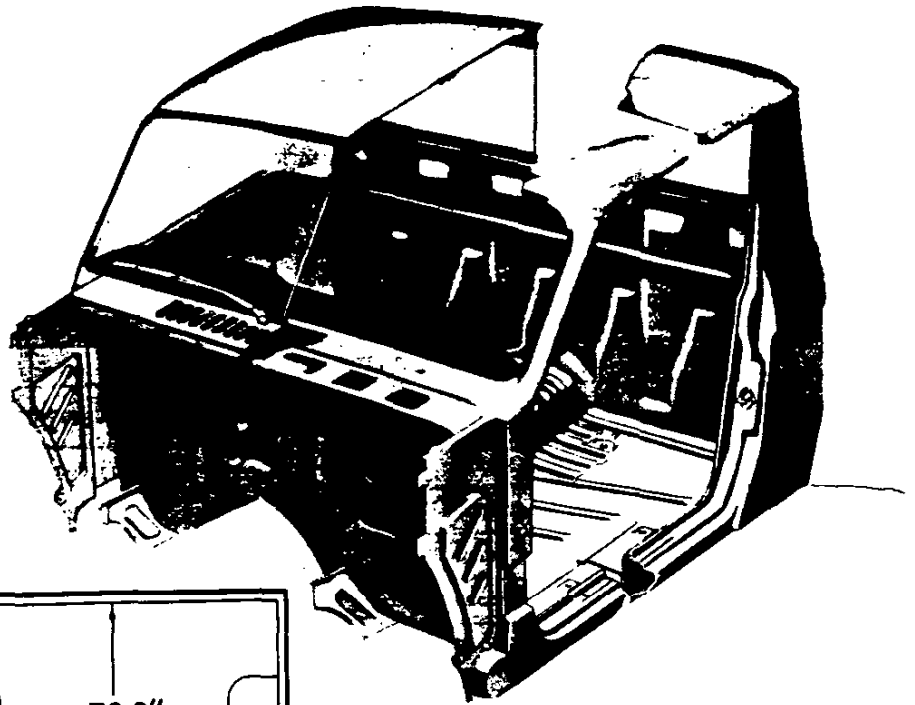


LUV PICKUP & CHASSIS-CAB

(SERIES 10)

Cab Construction

The cab is a 2-door, 2-passenger unit utilizing all-steel, welded construction. A plenum chamber with high level, screened air intake is incorporated in the front end structure for interior ventilation. Single-wall construction is utilized throughout the remainder of the cab except in the upper rear-quarter areas. Zinc-rich primer or plastisol is applied to several areas to reduce sheet metal corrosion. Drip rails are used at the sides of the roof panel. Lower body joints are filled with pumpable sealer. A 6-point mounting system is utilized for the integrated cab and front body structure. All mounts are the double rubber biscuit type.



Pickup Box

The all-steel, welded pickup box is built in both 6- and 7.5-foot nominal lengths with approximate 38 and 47 cubic foot capacities respectively. Integral skid strips are incorporated in the load floor with reinforcements provided at the outer ends of the numbers three, four and five cross sills. Single wall construction is utilized for the side panels and double wall construction is used for the tailgate. Eight cargo hold-down eyes of heavy-gage wire are provided on 6-ft. models and ten are provided on 7.5-ft. models. The 6-ft. box has three located at the outside edge of each side panel top rail while the 7.5-ft. box has four on each side panel top rail. Both models employ two at the outside edge of the tailgate top rail. The grain tight tailgate, with two hinges, is secured by left and right hand over-center latches.

LUV PICKUP & CHASSIS-CAB (SERIES 10)

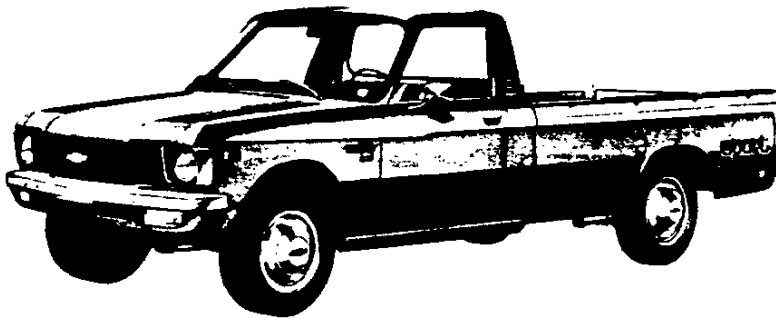
INTERIOR AND EXTERIOR SELECTION CHART

INTERIOR TYPE		Decor Option	INTERIOR TRIM COLOR AND CODE				
			Blue	Red	Saddle		
Standard Vinyl Bench Seat		Std.	VDD1		VSSI		
Mikado Custom Cloth Bench Seat		YH9	LDD1	LRR1	LSS1 ▲		
Custom Cloth High Back Bucket Seat				LRR4			
EXTERIOR COLORS	DECAL AVAILABILITY ★		SOLID PAINT CODE				
	"4 x 4" Package (4WD Models Only)	"SPORT" Package	Primary	Secondary			
Black	Red/Orange/Black	Lt. Orange/Orange/Red	86	86		X	X
★ Light Blue	Lt. Blue/Dk. Blue/Black	Lt. Blue/Med. Blue/Dk. Blue	20	20	X		
★ Scarlet Red	Red/Orange/Black	Lt. Orange/Orange/Red	70	70		X	X
Frost White	Red/Orange/Black	Lt. Orange/Orange/Red	12	12		X	X
	Lt. Blue/Dk. Blue/Black	Lt. Blue/Med. Blue/Dk. Blue			X		
Marigold Yellow	Red/Orange/Black	Lt. Orange/Orange/Red	53	53			X

▲ Available only when Marigold Yellow exterior is ordered.

★ Not available on Chassis-Cab models.

"SPORT" DECAL PACKAGE—RPO D88



"4 x 4" DECAL PACKAGE—RPO DL1

