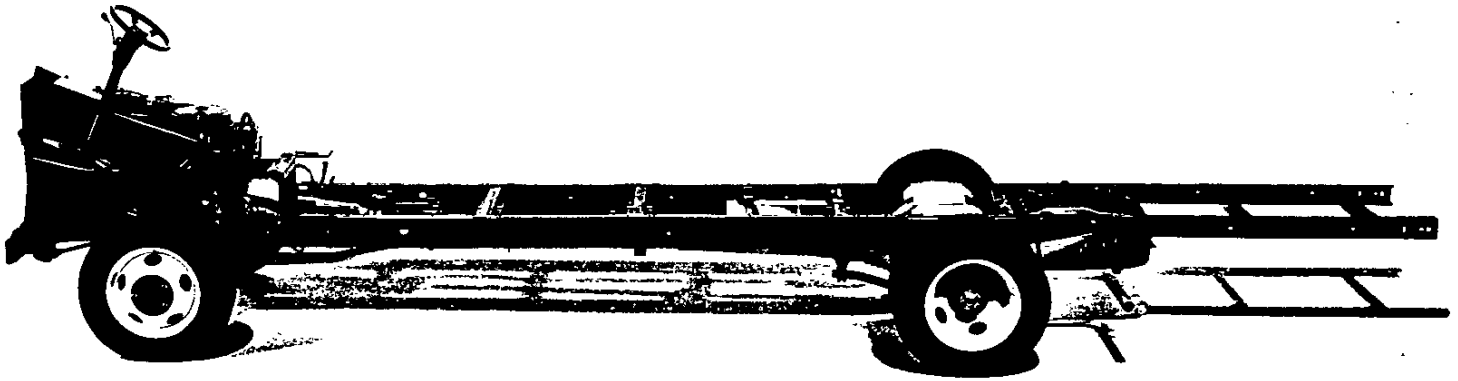




P 3 0 M O T O R H O M E C H A S S I S



P30 Series Motor Home Chassis

THE BEST-SELLING "CLASS A" CHASSIS.

Motor home manufacturers prefer the Chevy P30 Motor Home Chassis for many reasons. They like how easy it is to adapt to a wide variety of applications, with five different wheelbases — 137", 158.5", 178", 190" and 208". The 7.4 Liter gas V8 is standard. A new and virtually smokeless 6.5 Liter Diesel V8 is available in models P31132 and P31432. Both engines come with a 4-speed automatic overdrive transmission with electronic controls for phenomenally smooth shifting. The two-stage rear suspension has a 7900-lb. capacity axle for 137" and 158.5" wheelbases, and optional axle capacities up to 10,500 lbs. for

the 178", 190" and 208" wheelbases. A 10,500-lb. capacity rear axle with 4-wheel disc brakes is optional on dual rear-wheel chassis with 16,000-lb. GVWRs.

AVAILABLE OPTIONS

- Dual rectangular headlamps
- Electronic speed control (*requires 7.4L Gas V8; includes intermittent windshield wipers*)
- Engine block heater (*not available with 6.5L Diesel V8*)
- Fuel tank: 60-gal. (*not available in P31132*)
- Fuel tank: 80-gal., left-side or right-side (*not available in P31132 or P31432*)
- Harness assembly: taillight and stop lamp
- Heavy-duty chassis (*with 16,000-lb. GVWR only*)
- Heavy-duty rear springs (*requires 11,800-lb. or 12,300-lb. GVWR; available with 137" and 158.5" WB only; not available with 6.5L Diesel V8*)
- Heavy-duty suspension: Posi-Trim, front (*with 12,300-lb. GVWR only*)
- Spare wheel: 19.5 x 6.0 (*included with spare tire*).

SPECIFICATIONS

MODELS	P31132	P31432	P31832	P31932	P32032
Wheelbase (in.)	137	158.5	178	190	208
GVW range ¹ (lbs.)	11,800–12,300	11,800–14,800	14,800–16,000	14,800–16,000	14,800–16,000
Payload range ² (lbs.)	7632–8141	7457–9860	10,005–11,072	9918–10,984	9894–10,961
ENGINE AVAILABILITY	SAE Net HP @ RPM	Torque (lb.-ft.) @ RPM			
7.4L (454 cu. in.) HD ³ V8 w/EFI ⁴	230 @ 3600	385 @ 1600	S	S	S
6.5L (400 cu. in.) HD ³ V8 Diesel	190 @ 3400	385 @ 1700	0	0	–
TRANSMISSION AVAILABILITY					
4-speed OD automatic: electronically shifted	S	S	S	S	S
CHASSIS FEATURES					
Battery: 600 cold-cranking amps/hr. ⁵	S	S	S	S	S
Brakes (with 11,800-lb. GVWR only): power hydraulic, self-adjusting front disc/rear drum	S	S	–	–	–
Brakes (with 12,300-lb. and higher GVWRs): power hydraulic, self-adjusting front disc/rear disc	–	S	S	S	S
– Booster: hydraulic power	S	S	S	S	S
– Front rotor size	12.50 x 1.54	12.50 x 1.54	14.25 x 1.54	14.25 x 1.54	14.25 x 1.54
– Rear drum size (with 11,800-lb. GVWR only, diameter x thickness — in.)	13.0 x 3.5	13.0 x 3.5	–	–	–
– Rear rotor size (with 12,300-lb. and higher GVWRs, diameter x width — in.)	–	13.75 x 1.54	13.75 x 1.54	13.75 x 1.54	13.75 x 1.54
Fuel tank: 40-gal.	S	S	S	S	S
Generator: 105-amp	S	S	S	S	S
Steering: power	S	S	S	S	S
Front suspension: independent — coil springs	S	S	S	S	S
– Axle capacity (lbs.)	4300 ⁶	4300 ⁶	5000 ⁷	5000 ⁷	5000 ⁷
– Spring capacity (lbs.)	4400 ⁶	4400 ⁶	5000 ⁷	5000 ⁷	5000 ⁷
Rear suspension: hypoid drive — leaf springs	S	S	S	S	S
– Axle capacity (lbs.)	7900 ⁸	7900 ⁸	10,000 ⁹	10,000 ⁹	10,000 ⁹
– Spring capacity (lbs.)	6200 ¹⁰	6200 ¹⁰	10,000 ⁹	10,000 ⁹	10,000 ⁹
Wheels, dual rear (in.)	16.0 x 6.5	16.0 x 6.5	19.5 x 6.0	19.5 x 6.0	19.5 x 6.0
Standard tires: dual rear	7.50-R-16D	7.50-R-16D	8R-19.5D	8R-19.5D	8R-19.5D
Optional tires: dual rear	8R-19.5D	8R-19.5D	225/70R-19.5F	225/70R-19.5F	225/70R-19.5F
	–	225/70R-19.5F	–	–	–

S — Standard. O — Optional. ¹ Gross Vehicle Weight includes vehicle, passengers, equipment and cargo. Higher GVWRs require optional equipment. ² Payload includes body, passengers, equipment and cargo. Higher payloads require optional equipment. Payload ratings are based on engineering test weights at time of printing, and reflect all available engines. ³ Heavy-Duty Emissions. ⁴ Electronic Fuel Injection. ⁵ Dual batteries with diesel engine. ⁶ Optional capacities of 5000 lbs. and 5300 lbs. are available. ⁷ Optional capacities of 5300 lbs. and 5500 lbs. are available. ⁸ An optional capacity of 10,000 lbs. is available. ⁹ An optional capacity of 10,500 lbs. is available. ¹⁰ Optional capacities of 7500 lbs. and 10,000 lbs. are available.

NOTE: Tire load range: D (8-ply), F (12-ply).

GROSS COMBINATION WEIGHT RATINGS (GCWRs)

THE USE OF GCWRs TO DETERMINE ENGINE AND REAR AXLE RATIO. You can use the chart on Gross Combination Weight Ratings (GCWRs) to determine the engine and rear axle ratio you will require to tow a specific trailer with your Chevy. The chart shows you the maximum allowable GCWR based on available engines and rear axle ratios with automatic transmission. The GCWR includes the total loaded weight of both the vehicle with its RV body and the trailer. Any available engine may be used for trailering if the GCWR shown is not exceeded.

GCWR (lbs.)	14,500	15,000	17,000	19,000
ENGINE	REAR AXLE RATIOS			
7.4L (454 cu. in.) V8 Gas			4.10	4.56
				4.63
6.5L (400 cu. in.) V8 Diesel	4.10	4.56		

MOTOR HOME CHASSIS

MODELS

Motor Home Chassis	CP31132
Motor Home Chassis	CP31432
Motor Home Chassis	CP31832
Motor Home Chassis	CP31932
Motor Home Chassis	CP32032

DIMENSIONS /SPECIFICATIONS

Wheelbase (inches)	
CP31132	137.0
CP31432	158.5
CP31832	178.0
CP31932	190.0
CP32032	208.0
Length (overall - inches w/o rear bumper)	
CP31132	234.3
CP31432	259.4
CP31832	317.3
CP31932	329.3
CP32032	347.3
Payload (pounds)	
CP31132	6406
CP31432	6225
CP31832	9710
CP31932	9623
CP32032	9600
GVWR (pounds)	
CP31132-CP31432	11800
CP31832-CP31932-CP32032	14800
Fuel Tank Capacity	40 Gal.

POWER TEAMS

Standard Engine

RPO L19 7.4 L (454 cu. in.)-V8 with Electronic Fuel Injection, H.D.

Standard Transmission

RPO MX0 4-Speed Electronically Controlled Automatic with Overdrive, H.D.

STANDARD EQUIPMENT SUMMARY

Alternator: 105 amps
Battery: 600 Cold Cranking Amps
Brakes: Power hydraulic front disc/rear drum up to 12300-lb GVWR; Power hydraulic front and rear disc 14800-lb GVWR and above
Bumper: Front painted argent. Includes bumper guards
Electronic speed control
Shock Absorbers:
Below 14800 GVWR:
32mm front and rear
14800 GVWR AND ABOVE:
32mm front
35mm rear
Stabilizer Bar: Front, 1.25"
Steering, Power: Tilt-wheel
Wheels:
CP31132-CP31432
16.0" x 6.0" Gray steel
CP31832-CP31932-CP32032
19.5" x 6.0" Gray steel

MOTOR HOME CHASSIS

MODEL AND BODY

Description	Model No	Body
2-WHEEL-DRIVE MODELS		
*15523.00 Motor Home	CP31132	ZW9
*15775.00 Motor Home	CP31432	ZW9
*18290.00 Motor Home	CP31832	ZW9
*18434.00 Motor Home	CP31932	ZW9
*18650.00 Motor Home	CP32032	ZW9

*Includes Destination & Handling Charges

EMISSIONS (Must Specify One) (Refer Emission Requirement Section)

- FE9 Federal Emission Requirements
- NG1 New York State Emission Requirements
- YF5 California Emission Requirements
- NB8 California or New York State Emission Override (Reqs FE9 Federal Emissions)
- NC7 Federal Emission Override (Reqs NG1 New York State or YF5 California Emissions)

GVWR SELECTOR (MUST SPECIFY ONE)

GVW Option Required	GVW Rating (lbs)	# GAWR Front	(lbs) Rear	Minimum Equipment Required For GVW Rating
				Chassis Equipment
P31132-31432				
C7J	11800	4300	7500	Reqs G50 Springs and YWG Tire (N/A F66 Susp)
C7N	12300	4880	7500	Reqs G50 Springs, F66 Susp and YWG/ YNP Tires
P31432-31832-31932-32032				
C3D	14800	5300	10000	Reqs YNP/ YTN Tires
P31832-31932-32032				
C7P	16000	5500	10500	Reqs F44 Chassis and YNP/YTN Tires

* GAWR'S Shown are the minimum for each axle with equipment listed. Other GAWR'S are available, and they are determined as the minimum capacity of either axle, springs or tires.

CAPACITIES

P31132-31432				P31832-31932-32032			
SPRINGS:		AXLES:		SPRINGS:		AXLES:	
Front		Front		Front		Front	
4400	Base	4300	Base	5300	Base	5300	Base
5000	w/F66	5000	w/F66	5300	w/14800 GVW and F42	5300	w/14800 GVW and F42
5300	w/14800 GVW and F42	5300	w/14800 GVW and F42	5500	w/F44	5500	w/F44
Rear		Rear		Rear		Rear	
7500	Base	7900	Base	10000	Base	10000	Base
7500	w/G50	10000	w/HC7, (a) HC4 or HF8	10000	w/14800 GVW	10000	w/14800 GVW
10000	(a) HC4 w/14800 GVW		w/14800 GVW	10500	w/F44	10500	w/F44

(a) HC4 Heavy-Duty Axle, CP31432 at 14500 GVWR

MOTOR HOME CHASSIS

POWER TEAMS (Must Specify Engine, Transmission and Rear Axle)

(Consult GVWR Selector for Minimum Equipment Required)

ENGINE	TRANSMISSION	AXLES			GVWR
		4.10	4.56	4.63	
P31132-31432					
L19 V8 7.4 Liter (454 Cu In)	MX0	GT5	HC4	--	11800/12300
L65 Diesel-Turbo Charged 6.5 Liter V8 (395 Cu In)	MX0	GT5	HC4	--	11800/12300
	MX0	--	HC4	--	(a) 14800
P31832-31932-32032					
L19 V8 7.4 liter (454 Cu In)	MX0	--	HC4	--	14800
	MX0	--	--	GK9	16000
L65 Diesel-Turbo Charged 6.5 Liter V8 (395 Cu In)	MX0	--	HC4	--	14800
	MX0	--	--	GK9	16000

(a) N/A P31132

TIRES (Must Specify Front, Rear; Spare Optional) (Refer VPS For Pricing)

Description	Highway		
	Front	Dual Rear	Spare
TUBELESS STEEL BELTED RADIAL			
(a) 7.50-R16-D B/W	XWG	YWG	ZWG
8.00R-19.5-D B/L	XNP	YNP	ZNP
(b) 225/70R19.5-F B/W	XTN	YTN	ZTN

(a) Reqs P31132 or P31432

(b) N/A P31132

B/W = Blackwall

B/L = Black Letter

ADDITIONAL OPTIONS

	OPTION	
(-375.00)	EN2	AIR CONDITIONING PROVISION DELETE: (Reqs L19 Eng) AXLES: Rear (Refer Power Teams Chart for Availability)
N.C.	GT5	4.10 Ratio
N.C.	HC4	4.56 Ratio, Optional Light-Duty
N.C.	HC4	4.56 Ratio, Heavy-Duty (Std on CP31832-31932-32032) (Reqs 14500 or 14800 GVWR) (N/A L65 Eng w/16000)
N.C.	GK9	4.63 Ratio
N.C.	ZW9	BODY: Motor Home Chassis
N.C.	F44	CHASSIS: Heavy-Duty (CP31832-CP31932-CP32032 Only) (Reqs 16000 GVWR)
N.C.	V14	COOLING SYSTEM, TRANSMISSION OIL EMISSIONS:
N.C.	FE9	Federal Emission Requirements
N.C.	NG1	New York State Emission Requirements
N.C.	YF5	California Emission Requirements
N.C.	NB8	California or New York State Emission Override (Reqs FE9 Federal Emissions)
N.C.	NC7	Federal Emission Override (Reqs NG1 New York State or YF5 California Emissions)
		ENGINES: (Refer Power Teams Chart for Availability)
N.C.	L19	V8 7.4 Liter (454 Cu In)-EFI
2421.00	L65	V8 6.5 Liter Diesel (395 Cu In)
		GVWR: (Must Specify One)
N.C.	C7J	11,800#
250.00	C7N	12,300#
	C3D	14,800#
N.C.		CP31832-CP31932-CP32032
2255.00		CP31432
732.00	C7P	16,000#
N.C.	RHQ	HARNES ASSEMBLY: Tail and Stop Lamp
34.00	HPR	HEADLAMPS, DUAL RECTANGULAR
N.C.	G50	SPRINGS: Rear, Heavy-Duty, Capacity 3750-lb each (Reqs 11800 or 12300 GVWR) (N/A CP31832-CP31932-CP32032)
		SUSPENSION: Heavy-Duty
N.C.	F66	Positrim Front (12300 GVWR Only) (N/A CP31832-CP31932-CP32032)
N.C.	F42	(Reqs 14800 GVW)
		TANK FUEL:
236.00	NN4	Approx. 60-Gallon Capacity (N/A CP31132)
300.00	NJ9	Approx. 80-Gallon Capacity, LH or RH Fill (CP31832-CP31932-CP32032 Only)
		TIRES: (Refer Tire Chart for Availability; Vehicle Price Schedule for Pricing)
N.C.	MX0	TRANSMISSION: 4-Speed Electronically Controlled Automatic with Overdrive HD
		SPARE WHEEL:
77.00	Q34	19.5" X 6.0" (Reqs YNP or YTN Tires) (Reqs YNP Tire W/P31132) (Incl w/Spare Tire)
52.00	QD3	16.0" x 6.0" (Reqs YWG Tires) (Incl w/Spare Tire)

NOTE: WHEN ORDERING THIS VEHICLE, THE FOLLOWING INFORMATION WILL BE NECESSARY TO COMPLETE THE ORDERING PROCESS:

PEG GROUP 000A
 INTERIOR TRIM XXXX
 COLOR 01011

P30 F.C. CHASSIS AND MOTOR HOME CHASSIS INTRODUCTION

P30 F.C. CHASSIS AND MOTOR HOME CHASSIS

The P30 F.C. Chassis and Motor Home Chassis is basically carryover for 1994 with the exception of the 6.5L V8 Naturally Aspirated Diesel and Turbo Diesel Engines.

Changes on the P30 F.C. Chassis and Motor Home Chassis for 1994 include:

- 4.3L V6 Engine Enhancements
 - 5.7L V8 Engine Enhancements
 - 7.4L V8 Engine Enhancements
 - 6.5L V8 Diesel Engine with Natural Aspiration now available with Forward Control Chassis
 - 6.5L V8 Turbo Diesel Engine now available with Motor Home Chassis
 - Improved Cruise Control System for Motor Home Chassis
 - Brake/Transmission Shift Interlock
 - Enhanced Air Cleaner with Gasoline Engines
 - Starter Motor with 5.7L V8 and 7.4L V8 Engines
 - Smoother Shifting 4L80-E Transmission with 5.7L V8 and 7.4L V8 Engines
 - Metal Shield added internally to Steering Column to deter access to the Ignition Lock, Shaft Lock and Sector as Theft Deterrent
 - Auto Apply Parking Brake Actuation converted from Hydraulic to Electrical/Hydraulic on Motor Home Chassis for easier Parking Brake usage
 - Enhanced Air Conditioning Compressor for Motor Home Chassis Models w/6.5L V8 Turbo Diesel Engine Option
 - R134a Refrigerant replaces the current R12 for an environmentally safe air conditioner
 - Fasten Seat Belt Reminder Light
 - Aluminum Radiators replace Copper/Brass Radiators
-

P30 F.C. CHASSIS AND MOTOR HOME CHASSIS

MODEL SELECTION SUMMARY

Use the chart below to choose the model that fits your customer's needs. Note that the Maximum Payload is based on curb weight. See your 1994 Chevrolet Truck Order Guide for details.

SERIES	MODEL NUMBER/ BODY CODE/ OPTION CODE	PASSENGER CAPACITY (STD/OPT.)	STANDARD ENGINE/ TRANS.	OPTIONAL ENGINE/ TRANS.	GVWR (LBS.)	GAWR (LBS.) FRONT/ REAR	MAXIMUM PAYLOAD (LBS.) BASED ON CURB WT.	MAX. GROSS TRAILER WT./ TONGUE LOAD LOAD (LBS.) PROPERLY EQUIPPED
P30 FORWARD CONTROL CHASSIS								
125-INCH WHEELBASE SINGLE REAR WHEELS	CP30842/ZW9 YN tires	—	4.3L V6/M5	4.3L V6/A4 5.7L V8/M5/A4 6.5L V8/M5/A4	9000	4000/6084	5447	—
125-INCH WHEELBASE DUAL REAR WHEELS	CP30842/ZW9/ R05 (N/A YSG tires)	—	4.3L V6/M5	4.3L V6/A4 5.7L V8/M5/A4 6.5L V8/M5/A4	9000	3880/6200	5118	—
	CP30842/ZW9/ R05/G60 or G51 (N/A YSG tires)	—	4.3L V6/M5	4.3L V6/A4 5.7L V8/M5/A4 6.5L V8/M5/A4	10000	3880/7060	6223	—
	CP30842/ZW9/ R05/G60 or G51 (N/A YSG tires)	—	4.3L V6/M5	4.3L V6/A4 5.7L V8/M5/A4 6.5L V8/M5/A4	11000	4000/7900	7223	—
	CP30842/ZW9/ HC7/R05 and YSF tires	—	5.7L V8/M5	5.7L V8/A4 7.4L V8/A4 6.5L V8/M5/A4	12000	4500/9840	8035	—
	CP30842/ZW9/ HC7/R05 and YSG tires	—	5.7L V8/M5	5.7L V8/A4 7.4L V8/A4 6.5L V8/M5/A4	14100	4500/11000	10118	—
125-INCH SCHOOL BUS CHASSIS	CP30842/ZW9/ FS3/B3D/HC7 R05 and YSG tires	—	5.7L V8/M5	5.7L V8/A4 6.5L V8/M5/A4	14500	5000/11000	10428	—
133-INCH WHEELBASE SINGLE REAR WHEELS	CP31042/ZW9/ YN tires	—	4.3L V6/M5	4.3L V6/A4 5.7L V8/M5/A4 6.5L V8/M5/A4	9000	4000/6084	5436	—
133-INCH WHEELBASE DUAL REAR WHEELS	CP31042/ZW9/ R05 (N/A YSG tires)	—	4.3L V6/M5	4.3L V6/A4 5.7L V8/M5/A4 6.5L V8/M5/A4	9000	3880/6200	5108	—
	CP31042/ZW9/ R05/G60 or G51 (N/A YSG tires)	—	4.3L V6/M5	4.3L V6/A4 5.7L V8/M5/A4 6.5L V8/M5/A4	10000	3880/7060	6212	—
	CP31042/ZW9/ R05/G60 or G51 (N/A YSG tires)	—	4.3L V6/M5	4.3L V6/A4 5.7L V8/M5/A4 6.5L V8/M5/A4	11000	4000/7900	7212	—
	CP31042/ZW9/ HC7/R05 and YSF tires	—	5.7L V8/M5	5.7L V8/A4 7.4L V8/A4 6.5L V8/M5/A4	12000	4500/9840	8025	—
	CP31042/ZW9/ HC7/R05 and YSG tires	—	5.7L V8/M5	5.7L V8/A4 7.4L V8/A4 6.5L V8/M5/A4	14100	4500/11000	10108	—

See the following page for additional P30 Forward Control Chassis Models.

P30 F.C. CHASSIS AND MOTOR HOME CHASSIS

SERIES	MODEL NUMBER/ BODY CODE/ OPTION CODE	PASSENGER CAPACITY (STD./OPT.)	STANDARD ENGINE/ TRANS.	OPTIONAL ENGINE/ TRANS.	GVWR (LBS.)	GAWR (LBS.) FRONT/ REAR	MAXIMUM PAYLOAD (LBS.) BASED ON CURB WT.	MAX. GROSS TRAILER WT./ TONGUE LOAD LOAD (LBS.) PROPERLY EQUIPPED
P30 FORWARD CONTROL CHASSIS (CONT.)								
133-INCH SCHOOL BUS CHASSIS	CP31042/ZW9/ FS3/B3D/HC7 R05 and YSG tires	—	5.7L V8/M5	5.7L V8/A4 6.5L V8/M5/A4	14500	5000/11000	10371	—
157-INCH WHEELBASE SINGLE REAR WHEELS	CP31442/ZW9/ and YN tires	—	4.3L V6/M5	4.3L V6/A4 5.7L V8/M5/A4 6.5L V8/M5/A4	9000	4000/6084	5286	—
157-INCH WHEELBASE DUAL REAR WHEELS	CP31442/ZW9/ R05 (N/A YSG tires)	—	4.3L V6/M5	4.3L V6/A4 5.7L V8/M5/A4 6.5L V8/M5/A4	9000	3880/6200	4958	—
	CP31442/ZW9/ R05/G60 or G51 (N/A YSG tires)	—	4.3L V6/M5	4.3L V6/A4 5.7L V8/M5/A4 6.5L V8/M5/A4	10000	3880/7060	6062	—
	CP31442/ZW9/ R05/G60 or G51 (N/A YSG tires)	—	4.3L V6/M5	4.3L V6/A4 5.7L V8/M5/A4 6.5L V8/M5/A4	11000	4000/7900	7062	—
	CP31442/ZW9/ HC7/R05 and YSF tires	—	5.7L V8/M5	5.7L V8/A4 7.4L V8/A4 6.5L V8/M5/A4	12000	4500/9840	7875	—
	CP31442/ZW9/ HC7/R05 and YSG tires	—	5.7L V8/M5	5.7L V8/A4 7.4L V8/A4 6.5L V8/M5/A4	14100	4500/11000	9957	—
157-INCH SCHOOL BUS CHASSIS	CP31442/ZW9 FS3/B3D/HC7 R05 and YSG tires	—	5.7L V8/M5	5.7L V8/A4 6.5L V8/M5/A4	14500	5000/11000	10217	—
178-INCH WHEELBASE DUAL REAR WHEELS	CP31842/ZW9/ G51 or G60	—	4.3L V6/M5	4.3L V6/A4 5.7L V8/M5/A4 6.5L V8/M5/A4	10000	3880/7060	5945	—
	CP31842/ZW9/ G51 or G60 (N/A YSG tires)	—	4.3L V6/M5	4.3L V6/A4 5.7L V8/M5/A4 6.5L V8/M5/A4	11000	4000/7900	6945	—
	CP31842/ZW9/ HC7 and YSF tires	—	5.7L V8/M5	5.7L V8/A4 7.4L V8/A4 6.5L V8/M5/A4	12000	4500/9840	7389	—
	CP31842/ZW9/ HC7 and YSG tires	—	5.7L V8/M5	5.7L V8/A4 7.4L V8/A4 6.5L V8/M5/A4	14100	4500/11000	9472	—

See the following page for P30 Motor Home Chassis Models.

P30 F.C. CHASSIS AND MOTOR HOME CHASSIS

SERIES	MODEL NUMBER/ BODY CODE/ OPTION CODE	PASSENGER CAPACITY (STD./OPT.)	STANDARD ENGINE/ TRANS.	OPTIONAL ENGINE/ TRANS.	GVWR (LBS.)	GAWR (LBS.) FRONT/ REAR	MAXIMUM PAYLOAD (LBS.) BASED ON CURB WT.	MAX. GROSS TRAILER WT./ TONGUE LOAD (LBS.) PROPERLY EQUIPPED
P30 MOTOR HOME CHASSIS								
137.0-INCH WHEELBASE	CP31132/ZW9/G50 and YWG tires	—	7.4L V8/A4	6.5L V8/A4 Turbo Diesel	11800	4300/7500	7608	—
	CP31132/ZW9/ G50/F66 and YWG or YNP tires	—	7.4L V8/A4	6.5L V8/A4 Turbo Diesel	12300	4880/7500	8089	—
158.5-INCH WHEELBASE	CP31432/ZW9/G50 and YWG tires	—	7.4L V8/A4	6.5L V8/A4 Turbo Diesel	11800	4300/7500	7449	—
	CP31432/ZW9/ G50/F66 and YWG or YNP tires	—	7.4L V8/A4	6.5L V8/A4 Turbo Diesel	12300	4880/7500	7930	—
	CP31432/ZW9 and YNP or YTN tires	—	7.4L V8/A4	6.5L V8/A4 Turbo Diesel	14800	5300/10000	10121	—
178.0-INCH WHEELBASE	CP31832/ZW9 and YNP or YTN tires	—	7.4L V8/A4	6.5L V8/A4 Turbo Diesel	14800	5300/10000	10024	—
	CP31832/ZW9/F44 and YNP or YTN tires	—	7.4L V8/A4	6.5L V8/A4 Turbo Diesel	16000	5500/10500	11085	—
190.0-INCH WHEELBASE	CP31932/ZW9 and YNP or YTN tires	—	7.4L V8/A4	6.5L V8/A4 Turbo Diesel	14800	5300/10000	9939	—
	CP31932/ZW9/F44 and YNP or YTN tires	—	7.4L V8/A4	6.5L V8/A4 Turbo Diesel	16000	5500/10500	10998	—
208.0-INCH WHEELBASE	CP32032/ZW9/ and YNP or YTN tires	—	7.4L V8/A4	6.5L V8/A4 Turbo Diesel	14800	5300/10000	9915	—
	CP32032/ZW9/F44 and YNP or YTN tires	—	7.4L V8/A4	6.5L V8/A4 Turbo Diesel	16000	5500/10500	10975	—

Note: Motor Home Chassis Models are for recreational vehicle use only and are not to be used for mounting any type of commercial body.

P30 F.C. CHASSIS AND MOTOR HOME CHASSIS

POWERTRAINS

Chevrolet offers a variety of engines, transmissions and rear axle ratios for the P30 Chassis. The following charts detail basic engine, transmission and axle specifications. See your 1994 Chevrolet Truck Order Guide for details.

ENGINES					
	4.3L V6	5.7L V8	7.4L V8	6.5L V8 DIESEL	6.5L V8 TURBO DIESEL
Order Code	LB4	L05	L19	L57	L65
Availability	N/A on Motor Home	N/A on Motor Home	All	N/A on Motor Home	Motor Home
SAE Net Horsepower Horsepower @ rpm	155 @ 4000	190 @ 4000	230 @ 3600	160 @ 3400	190 @ 3400
SAE Net Torque lbs-ft @ rpm	230 @ 2400	300 @ 2400	380 @ 1600	290 @ 1700	385 @ 1700
Fuel System	EFI	EFI	EFI	Indirect Fuel Injection	Turbo Indirect Fuel Injection
Clutch Size (in.)	11	12	—	12	12
Standard Battery Cold Cranking Amps at 0°F	600	600	600	2 @ 600 each	2 @ 600 each
Standard Alternator Max. Capacity (Amps)	105	105	105	105	105

TRANSMISSIONS									
	MANUAL 5-SPEED W/OD NP4500				AUTOMATIC 4-SPEED W/OD 4L80-E				
Order Code	MM5				MX0				
Availability	N/A on Motor Home				All				
Engine Application (Order Code)	4.3L V6 (LB4)	5.7L V8 (L05)	7.4L V8 (L19)	6.5L V8 Diesel (L57)	4.3L V6 (LB4)	5.7L V8 (L05)	7.4L V8 (L19)	6.5L V8 Diesel (L57)	6.5L V8 Turbo Diesel (L65)
Gear Ratios									
First	6.34				2.48				
Second	3.44				1.48				
Third	1.71				1.00				
Fourth	1.00				0.75				
Fifth	0.73				—				
Reverse	6.34				2.07				

REAR AXLES (F.C. CHASSIS)				
Make	GM			Dana
Capacity (lbs.)	7900 Full-Floating			11,000 Full-Floating
Pinion and Ring Gear Type	Hypoid			Hypoid
Axle Ratio Code	GT5	HC4	HC7	HC7
Ratio	4.10	4.56	5.13	5.13
Pinion Teeth	10	9	8	8
Ring Gear Teeth	41	41	41	41
Ring Gear Diameter (in.)	10.5	10.5	10.5	11.3

REAR AXLES (P30 MOTOR HOME CHASSIS)				
Make	GM		GM ¹	Dana ^{2,3}
Capacity (lbs.)	7900 Full-Floating		10,000 Full-Floating	10,500 Full-Floating
Pinion and Ring Gear Type	Hypoid		Hypoid	Hypoid
Engine Availability	7.4L V8/6.5L V8 (L19)/(L65)		7.4L V8/6.5L V8 (L19)/(L65)	7.4L V8/6.5L V8 (L19)/(L65)
Axle Ratio Code	GT5	HC4	HC4	GK9
Ratio	4.10	4.56	4.56	4.63
Pinion Teeth	10	9	9	8
Ring Gear Teeth	41	41	41	37
Ring Gear Dia. (in.)	10.5	10.5	10.5	11.3

¹ 14,800 lb. GVWR only. ² 16,000 lb. GVWR models only. ³ Dana models have tubular section only.

P30 F.C. CHASSIS AND MOTOR HOME CHASSIS

TRIM LEVELS

The following chart details major standard features for P30 F.C. Chassis and Motor Home. See your 1994 Chevrolet Truck Order Guide for more details.

STANDARD EQUIPMENT		F.C. CHASSIS	MOTOR HOME
KEY: ■ = STANDARD, -- = NOT INCLUDED			
BRAKES	Power vacuum front disc, rear drum brakes up to 12,000 lb. GVWR; power hydraulic front and rear disc 12,000 lb. and above GVWR. Power hydraulic front disc, rear drum up to 12,300 lb. GVWR; power hydraulic front and rear disc 12,300 lb. and above GVWR.	■ —	— ■
BUMPER	Front painted white. Front painted argent. Includes bumper guards.	■ —	— ■
EXHAUST	Dual.	■	■
FRAME	Riveted ladder-type with channel design.	■	■
FUEL TANK	40 gallon (approx.) capacity.	■	■
GAGES	Engine temperature, fuel level, odometer, oil pressure, quartz speedometer, trip odometer, voltmeter and additional telltale lights.	■	—
HORN	Single electric low-note. Dual Note.	■ —	— ■
HUB CAPS	Bright metal with black trim.	■	—
REAR AXLE	Hypoid, full-floating. Ratios vary with model.	■	■
SHOCK ABSORBERS	Front and Rear: 32 mm piston diameter.	■	■
SPEED CONTROL	Electronic.	—	■
STABILIZER BAR	Front: 1.25 inch diameter, heavy duty.	■	■
STEERING	Integral power.	■	■
STEERING WHEEL	2-spoke including Tilt-Wheel™.	■	■
SUSPENSION	Front: Independent with coil springs. Rear: 2-stage Multi-Leaf on all models with ZW9 (except CP31842, CP30842 and CP31042). Rear: Combination semi-elliptic two-stage main-Auxiliary— CP31442. Independent coil with auxiliary air spring.	■ ■ ■ —	■ ■ — ■
TIRES	Four LT215/85R16C/D ALS/SBR on single rear wheel models. Six LT215/85R16C ALS/SBR on dual rear wheel models. Six 8.00R-19.5D ALS/SBR on dual rear wheel models.	■ — —	— — ■
WHEELS	Four white painted 16" x 6.0" on single rear wheel models. Six argent painted 16" x 6.0" on dual rear wheel models. Six argent painted 19.5" x 6.0" on dual rear wheel models.	■ — —	— — ■

FORWARD CONTROL CHASSIS OPTIONS

These options can be ordered individually. See your 1994 Chevrolet Truck Order Guide and Vehicle Price Schedule for specific information and prices. The Option Code is listed in bold type.

Air Conditioning Provision	ENV
Alternator, 124 amp (requires L19 engine)	KW2
Axle, Rear: (Must specify one of the following.)	
4.10 Ratio	GT5
4.56 Ratio	HC4
5.13 Ratio	HC7
Axle, Front I-Beam (See Order Guide for restrictions)	FS3
Battery, Heavy-Duty (N/A L57)	UA1
Bumper, front	
Black (included w/B3M School Bus special equipment)	VH6
Extra wide, white	VKL
Cooling system, engine oil (N/A L57 engine)	KC4
Cooling system, transmission oil (includes C7M 14100 or C7S 14500 GVWR w/L05 engine. N/A L19 engine)	V14

Engines:	
4.3L EFI V6	LB4
5.7L EFI V8	L05
7.4L EFI V8	L19
6.5L Diesel Naturally Aspirated EFI V8	L57
Emissions:	
Federal	FE9
New York State	NG1
California	YF5
Federal Emissions Override	NC7
Cal./N.Y. Emissions Override	NB8
Fender, deletion	FNT
GVWR Ratings	
9000	C6U
10,000	C7A
11,000	C7E
12,000	C7L
14,100	C7M
14,500 (School Bus Only)	C7S
Horn, dual electric (N/A CP31842 or B3D/B3M School Bus)	U08

School Bus Chassis equipment	
(N/A CP31842)	
(14,500 GVWR only)	B3D
School Bus special equipment (requires B3D School Bus Chassis) (includes black bumpers and black wheel color)	B3M
Springs, heavy duty rear 11,800-lb.	G51
Springs, rear main and auxiliary. Capacity 4000-lb each (N/A w/FS3 front axle)	G60
Transmissions:	
5-speed manual OD	MM5
4-speed automatic OD	MX0
Wheel color, black (included w/B3M School Bus special equipment)	41P
Wheel color, gray (Reqs. R05) (included with CP31842)	84P
Dual Rear (std on CP31842)	R05
Single Rear (N/A CP31842)	R04
Wheel, spare 19.5" x 6.0" (requires 8-19.5 tires) (included w/spare tire)	Q34

P30 F.C. CHASSIS AND MOTOR HOME CHASSIS

FORWARD CONTROL CHASSIS TIRES				
KEY: ALS = ALL-SEASON SBR = STEEL-BELTED RADIAL PLY BW = BLACKWALL WW = WHITEWALL WL = WHITE LETTERED HWY = HIGHWAY BL = BLACK LETTERED OOR = ON-OFF ROAD WOL = WHITE OUTLINE LETTERED				
TIRE DESCRIPTION		FRONT	REAR	SPARE
LT215/85R16D	ALS/SBR/BW	XYK	YYK	ZYK
LT215/85R16D	OOR/SBR/BW	—	YYL	ZYL
LT235/85R16E	ALS/SBR/BW	XYN	YYN	ZYN
8-19.5D	BW	XSF	YSF	ZSF
8-19.5E	BW (reqs. HC7 heavy duty axle)	XSG	YSG	ZSG

MOTOR HOME CHASSIS OPTIONS

Air Conditioning Delete Provision (Requires L19 engine)	EN2	Cal./N.Y. Emissions Override	NB8	Suspension, Positrim Front (requires C7N)	F66
Axle, Rear: (Must specify one of the following.)		Engine:		Suspension, Heavy Duty (Reqs. C3D) ...	F42
4.10 Ratio	GT5	7.4L EFI V8	L19	Tank, Fuel:	
4.63 Ratio	GK9	6.5L Turbo Diesel V8	L65	Approx. 60 gallon capacity	
4.56 Ratio	HC4	GVWR Ratings		(N/A P31132)	NN4
Chassis, Heavy Duty (Reqs. 16000 GVWR)	F44	11,800	C7J	Approx. 80 gallon capacity L.H. or R.H.	
Emissions:		12,300	C7N	Fill (P31832-P31932-P32032 Only)	NJ9
Federal	FE9	14,800	C3D	Transmission:	
New York State	NG1	16,000	C7P	4-Speed Automatic w/Overdrive.	
California	YF5	Harness Assembly, Tail and Stop Lamps	RHQ	Electronic Control	MX0
Federal Emissions Override	NC7	Headlamps, Dual Rectangular	HPR	Wheel, Spare	Q34
		Springs, Heavy Duty Rear, 3,700-lb. each (requires C7J or C7N)	G50		

MOTOR HOME CHASSIS TIRES				
KEY: ALS = ALL-SEASON SBR = STEEL-BELTED RADIAL PLY BW = BLACKWALL WW = WHITEWALL WL = WHITE LETTERED HWY = HIGHWAY BL = BLACK LETTERED OOR = ON-OFF ROAD WOL = WHITE OUTLINE LETTERED				
TIRE DESCRIPTION		FRONT	REAR	SPARE
LT225/70R19.5F	SBR/BW	XTN	YTN	ZTN
8.00R-19.5D HIGHWAY	SBR/BW	XNP	YNP	ZNP
7.50R16/D HIGHWAY	SBR/BW	XWG	YWG	ZWG

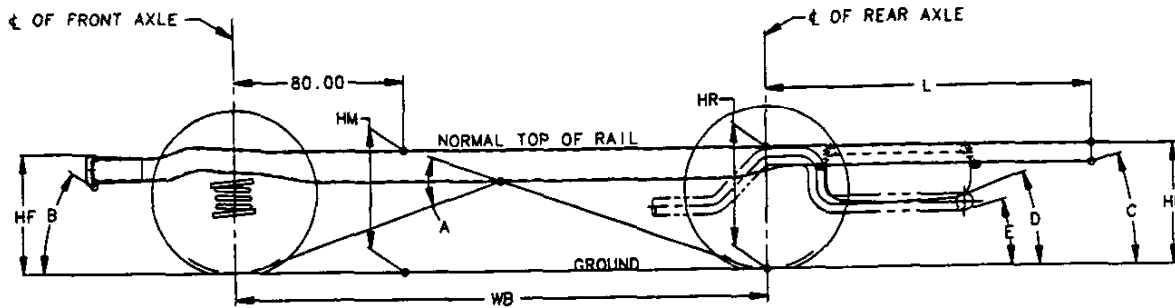
DIMENSIONS

MODEL	FORWARD CONTROL COMMERCIAL CHASSIS			
	CP30842/ZW9	CP31042/ZW9	CP31442/ZW9	CP31842/ZW9
EXTERIOR DIMENSIONS (FORWARD CONTROL CHASSIS)				
BODY				
Wheelbase (in.)	125.0	133.0	157.0	178.0
Overall Length (in.) w/o Rear Bumper	214.8	238.8	262.8	318.4
Maximum Width (in.)	85.5	85.5	85.5	85.5
Bumper to Axle (in.) Front	36.0	36.0	36.0	36.0
Ground to Top of Rear Load Floor (in.)	27.9	29.1	29.1	29.1
Ground Clearance (in.) Front	9.9 7.2	9.7 7.2	9.7 7.2	9.7 7.2

School Bus Chassis Dimensions — See Order Guide

P30 F.C. CHASSIS AND MOTOR HOME CHASSIS

MODEL	P30 MOTOR HOME CHASSIS (137 IN. WB)	P30 MOTOR HOME CHASSIS (158.5 IN. WB)	P30 MOTOR HOME CHASSIS (178 IN. WB)	P30 MOTOR HOME CHASSIS (190 IN. WB)	P30 MOTOR HOME CHASSIS (208 IN. WB)
MODEL NUMBER	CP31132/ZW9	CP31432/ZW9	CP31832/ZW9	CP31932/ZW9	CP32032/ZW9
EXTERIOR DIMENSIONS (P30 MOTOR HOME CHASSIS)					
BODY					
Wheelbase (in.)	137.0	158.5	178.0	190.0	208.0
Overall Length (in.)	234.3	259.4	317.3	329.3	347.3
Bumper to Axle (in.) Front	33.5	33.5	33.5	33.5	33.5
Rear Overhang	63.8	67.4	105.8	105.8	105.8
Overall Width (in.)	85.0	85.0	85.0	85.0	85.0
Frame Width (in.)	34	34	34	34	34
Ground to Top of Frame (in.)	27.9	27.9	30.6	30.6	30.6



LETTER DESIGNATOR DEFINITIONS
P30032 Models with Independent Front Suspension

FRAME HEIGHTS AND LENGTHS

- L** Centerline of axle to end of frame
- HF** Top of bumper to ground
- HM** Inside top of frame to ground
- HR** Top of frame to ground at centerline of rear axle
- HE** Top of frame to ground

ANGLE(S)

- A** Muffler

ANGLE(S) (APPROACH)

- B** Front crossmember

ANGLE(S) (DEPARTURE)

- C** Frame
- D** Fuel tank
- E** Tail pipe

Note: All weights are in pounds and all dimensions are in inches.

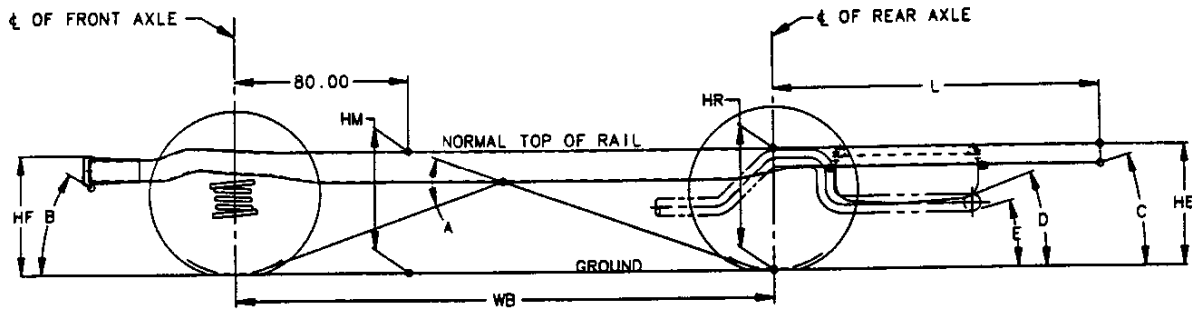
P 30032 Models

P31132 137.0" Wheelbase							Frame Heights at Base Model Curb Weight				Frame Heights and Angular Dimensions are shown at Maximum GAWR Front and Rear								
GVW/Tire	L	Base Model Curb Weight			GAWR		HF	HM	HR	HE	HF	HM	HR	HE	A	B	C	D	E
		Frt	Rr	Ttl	Frt	Rr													
10,500 LT215/85R16D		2415	1723	4138	4300	6200	23.1	26.1	28.4	30.3	19.8	22.5	24.3	26.0	15	23	18	11	12
11,000 7.50X16LT/D		2443	1753	4196	4880	6200	23.6	26.7	29.0	31.0	19.9	22.3	23.7	24.9	14	23	17	10	11
11,800 LT215/85R16D		2415	1753	4168	4300	7500	23.1	26.1	28.4	30.3	20.0	22.4	24.4	25.6	13	26	18	10	12
12,300 7.50R16D		2443	1772	4215	4880	7500	23.7	26.7	28.9	30.8	19.4	22.2	24.2	26.0	14	22	18	11	12

P31432 158.5" Wheelbase							Frame Heights at Base Model Curb Weight				Frame Heights and Angular Dimensions are shown at Maximum GAWR Front and Rear								
GVW/Tire	L	Base Model Curb Weight			GAWR		HF	HM	HR	HE	HF	HM	HR	HE	A	B	C	D	E
		Frt	Rr	Ttl	Frt	Rr													
10,500 LT215/85R16D		2381	1915	4296	4300	6200	23.4	26.0	28.4	29.8	20.0	22.4	24.4	25.6	13	26	18	10	12
11,000 7.50X16LTD		2421	1950	4371	4880	6200	23.8	26.5	29.0	30.4	19.3	22.3	25.3	27.0	13	25	19	12	13
11,800 LT215/85R16D		2320	1974	4294	4300	7500	23.5	26.1	28.4	29.7	20.1	22.2	23.8	24.7	12	26	17	10	11

P31932 190.0" Wheelbase							Frame Heights at Base Model Curb Weight				Frame Heights and Angular Dimensions are shown at Maximum GAWR Front and Rear								
GVW/Tire	L	Base Model Curb Weight			GAWR		HF	HM	HR	HE	HF	HM	HR	HE	A	B	C	D	E
		Frt	Rr	Ttl	Frt	Rr													
14,500 8X19.5D		2581	2279	4860	5000	10000	25.1	28.4	32.8	35.9	20.9	24.1	28.1	30.9	14	28	14	14	17
14,800 8X19.5D		2586	2296	4882	5300	10000	25.4	28.1	31.2	33.4	20.3	23.6	28.1	31.3	13	27	14	15	17
16,000 8X19.5D		2655	2361	5016	5500	10500	25.0	28.3	32.7	35.8	20.0	23.3	27.8	31.0	13	26	14	14	17

P32032 208.0" Wheelbase							Frame Heights at Base Model Curb Weight				Frame Heights and Angular Dimensions are shown at Maximum GAWR Front and Rear								
GVW/Tire	L	Base Model Curb Weight			GAWR		HF	HM	HR	HE	HF	HM	HR	HE	A	B	C	D	E
		Frt	Rr	Ttl	Frt	Rr													
14,500 8X19.5D		2572	2311	4882	5000	10000	24.7	28.0	32.8	35.8	20.4	23.6	28.1	31.0	12	27	14	14	17
14,800 8X19.5D		2577	2329	4906	5800	10000	24.7	28.0	32.7	35.8	19.8	23.1	28.1	31.3	12	26	15	14	17
16,000 8RX19.5D		2645	2394	5039	5500	10500	24.6	27.9	32.7	35.8	19.4	22.8	27.8	31.0	11	25	14	14	17



LETTER DESIGNATOR DEFINITIONS
P30042 Models with Independent Front Suspension

FRAME HEIGHTS AND LENGTHS

- L** *Centerline of axle to end of frame*
- HF** *Top of bumper to ground*
- HM** *Inside top of frame to ground*
- HR** *Top of frame to ground at centerline of rear axle*
- HE** *Top of frame to ground*

ANGLE(S)

- A** *Ramp breakover*

ANGLE(S) (APPROACH)

- B** *Front bumper*

ANGLE(S) (DEPARTURE)

- C** *Frame*
- D** *Fuel tank*
- E** *Tail pipe*

Note: All weights are in pounds and all dimensions are in inches.

P 30042 Models

P30842 125.0" Wheelbase						Frame Heights at Base Model Curb Weight				Frame Heights and Angular Dimensions are shown at Maximum GAWR Front and Rear									
GVW/Tire	L	Base Model Curb Weight			GAWR		HF	HM	HR	HE	HF	HM	HR	HE	A	B	C	D	E
		Frnt	Rr	Ttl	Frnt	Rr													
7600 LT215/85R16C		1882	1473	3355	3880	4670	26.1	26.3	27.9	28.8	22.4	22.7	24.3	25.2	16	24	22	17	12
8200 LT235/85R16D		1907	1504	3411	4000	5246	26.8	27.0	28.5	29.4	22.9	23.1	24.4	25.3	17	24	22	17	12
8600 LT225/75R16E		1951	1519	3470	3650	5300	26.4	24.8	24.3	24.0	23.0	22.0	22.0	14	25	19	13	8	
9000 LT235/85R16C		1957	1524	3481	4000	6084	26.6	26.9	28.5	29.5	23.1	22.9	24.0	24.8	15	25	17	20	11
9000 LT215/85R16C		1882	1473	3355	3880	6200	26.3	26.5	28.0	28.9	23.0	22.6	23.4	23.9	16	25	21	16	10
10,000 LT215/85R16C		1952	1646	3598	3880	7060	26.1	26.5	28.1	29.1	22.9	22.7	23.6	24.3	16	24	21	16	11
11,000 LT215/85R16D		1951	1643	3594	4000	7900	26.2	26.5	28.2	29.2	22.8	22.5	23.5	24.1	15	24	21	16	10
12,000 8x19.0D		2141	2053	4194	4500	9840	27.6	28.3	30.3	31.6	23.2	24.4	27.1	28.8	20	25	26	22	16
14,100 8Rx19.5D		2141	2057	4198	4500	11000	27.8	28.3	30.3	31.6	23.2	24.4	26.9	28.5	20	25	25	22	16
14,500 8Rx19.5D		2141	2057	4198	5000	11000	27.6	28.3	30.3	31.6	23.2	24.4	26.9	28.5	20	25	25	22	16

P31042 133.0" Wheelbase						Frame Heights at Base Model Curb Weight				Frame Heights and Angular Dimensions are shown at Maximum GAWR Front and Rear									
GVW/Tire	L	Base Model Curb Weight			GAWR		HF	HM	HR	HE	HF	HM	HR	HE	A	B	C	D	E
		Frnt	Rr	Ttl	Frnt	Rr													
7600 LT215/85R16C		1887	1479	3366	3880	4670	26.1	26.3	27.8	29.0	22.5	22.7	24.3	25.4	15	24	17	21	12
8200 LT235/85R16D		1964	1528	3492	4000	5246	26.8	26.9	28.5	29.7	22.9	23.0	24.5	25.6	16	24	17	21	12
9000 LT235/85R16E		1965	1529	3494	4000	6084	26.7	26.9	28.6	29.8	23.4	23.1	24.0	24.7	15	25	17	20	11
9000 LT215/85R16C		1887	1479	3366	3880	6200	26.3	26.5	28.0	29.1	23.0	22.6	23.4	24.0	15	25	16	19	10
10,000 LT215/85R16C		1960	1651	3611	3880	7060	26.1	26.4	28.1	29.4	22.9	22.7	23.7	24.4	15	24	16	20	11
11,000 LT215/85R16D		1959	1649	3608	4000	7900	26.2	26.5	28.1	29.4	22.8	22.5	23.5	24.2	15	24	16	19	10
12,000 8Rx19.5D		2149	2058	4207	4500	9840	27.6	28.2	30.3	31.8	23.2	24.3	27.1	29.1	19	25	20	27	16
14,100 8Rx19.5D		2149	2062	4211	4500	11000	27.6	28.2	30.3	31.8	23.3	24.3	26.9	28.8	18	25	20	26	16
14,500 8Rx19.5		2149	2062	4211	5000	11000	27.6	28.2	30.3	31.8	22.1	23.6	26.9	29.3	18	23	20	27	16

P 30032/42 Chassis

P31442 157.0" Wheelbase						Frame Heights at Base Model Curb Weight				Frame Heights and Angular Dimensions are shown at Maximum GAWR Front and Rear									
GVW/Tire	L	Base Model Curb Weight			GAWR		HF	HM	HR	HE	HF	HM	HR	HE	A	B	C	D	E
		Frt	Rr	Ttl	Frt	Rr													
7600 LT215/85R16D		1965	1551	3516	3880	4670	26.1	26.1	27.7	28.7	22.6	22.6	24.3	25.3	13	24	17	17	11
8200 LT235/85R16D		1991	1587	3578	4000	5246	26.7	26.7	28.4	29.5	23.0	22.9	24.5	25.5	13	25	17	17	12
9000 LT235/85R16E		2041	1607	3648	4000	6084	26.6	26.6	28.4	29.5	23.1	22.8	24.0	24.7	13	25	17	18	11
9000 LT215/85R16		1965	1551	3516	3880	6200	26.2	26.3	28.3	29.4	23.4	23.0	23.9	24.5	13	25	16	16	11
10,000 LT215/85R16C		2036	1729	3765	3880	7060	26.1	26.2	28.0	29.1	23.0	22.6	23.6	24.3	12	25	16	16	10
11,000 LT215/85R16D		2034	1726	3760	4000	7900	26.1	26.2	28.0	29.1	22.9	22.4	23.5	24.1	12	24	16	15	10
12,000 8x19.5D		2224	2136	4360	4500	9840	27.6	28.2	30.2	31.6	23.4	24.2	27.1	28.8	16	25	20	22	16
14,100 8Rx19.5D		2224	2140	4364	4500	11000	27.6	28.0	30.2	31.6	23.4	24.1	26.9	28.5	16	26	20	21	15
14,500 8Rx19.5E		2224	2140	4364	5000	11000	27.6	28.0	30.2	31.6	22.3	23.4	29.9	28.9	22	15	20	22	16

P31842 178.0" Wheelbase						Frame Heights at Base Model Curb Weight				Frame Heights and Angular Dimensions are shown at Maximum GAWR Front and Rear									
GVW/Tire	L	Base Model Curb Weight			GAWR		HF	HM	HR	HE	HF	HM	HR	HE	A	B	C	D	E
		Frt	Rr	Ttl	Frt	Rr													
10,000 LT215/85R16C		2036	1857	3893	3880	7060	27.8	28.2	31.1	32.9	25.3	25.4	27.7	29.1	15	28	16	22	16
11,000 LT215/85R16D		2042	1880	3922	4000	7900	27.6	28.1	31.1	33.0	25.3	25.3	27.2	28.5	15	28	15	21	15
12,000 8x19.5D		2532	2289	4821	4500	9840	29.5	29.0	30.2	31.0	27.0	26.4	27.5	28.2	16	31	15	21	15
14,100 8x19.5D		2532	2269	4801	4500	11000	29.5	29.0	30.3	31.1	27.1	26.3	26.9	27.3	16	31	14	20	14