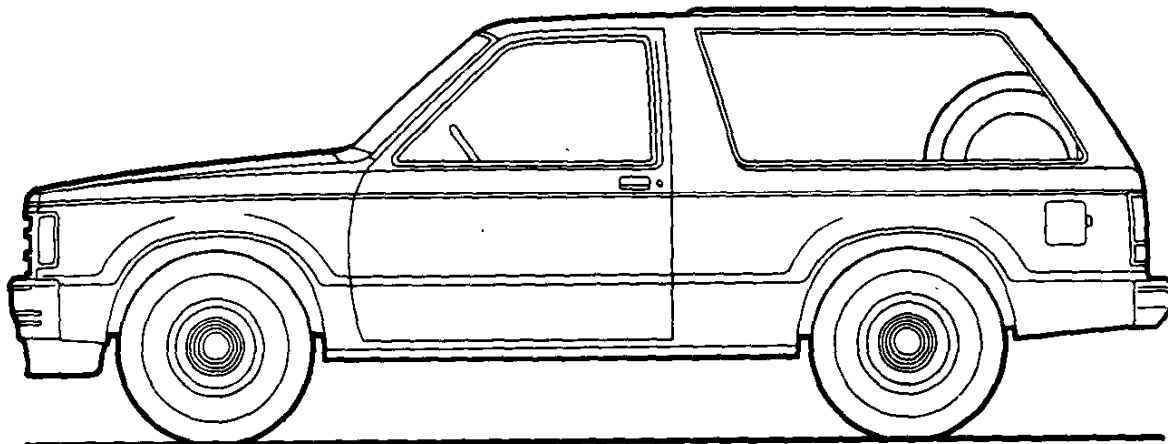


**S-10/15 BLAZER/JIMMY 2- & 4-WHEEL DRIVE**  
**MODEL SELECTOR**



<b>SERIES</b>	<b>MODEL NUMBER</b>	<b>BODY ORDERING CODE</b>
<b>S-10/S-15</b> (2-Wheel Drive)	S10S16	E55
<b>S-10/S-15</b> (4-Wheel Drive)	T10S16	E55

# S-10/15 BLAZER/JIMMY 2- & 4-WHEEL DRIVE

## STANDARD SPECIFICATIONS

(See Gray Tab Section for Specification Details)

Series	S-10/S-15 2-Wheel Drive	S-10/S-15 4-Wheel Drive
<b>Engine</b> <b>Base Equip.</b> ..... <b>Clutch</b> ..... <b>Air Filter</b> ..... <b>Oil Filter</b> ..... <b>Exhaust System</b> ..... <b>Emission Control Systems</b> .....	■2.0 Liter, 2-bbl. L4 9.13; 71.86 sq. in. Oiled-paper Element Throwaway Type Single Aluminized Meets Government Requirements	
<b>Suspension, Front</b> <b>Type</b> ..... <b>Axle Capacity</b> ..... <b>Axle Ratio</b> ..... <b>Springs @ Ground</b> ..... <b>Shock Absorbers</b> ..... <b>Stabilizer Bar</b> .....	Independent Coil Springs 2100 lb. — 1050 lb. ea. 25mm dia. 1" dia.	Independent Driving Axle Torsion Bar 2300 lb. 3.73 1150 lb. ea. 25mm dia. 1" dia.
<b>Suspension, Rear</b> <b>Type</b> ..... <b>Axle Capacity</b> ..... <b>Axle Ratio</b> ..... <b>Springs, Main @ Ground</b> ..... <b>Shock Absorbers</b> .....	Salisbury Axle; Hypoid Drive; Two-stage Multi-leaf Springs Leaf Springs	
	2550 lb. 3.42	2700 lb. 3.73
	1350 lb. ea. 25mm dia.	
<b>Brakes</b> <b>Front</b> ..... <b>Rear</b> ..... <b>Booster</b> ..... <b>Parking</b> .....	Hydraulic; Self-adjusting Disc; 10.51" Rotor Drum; 9.49" x 2" Single Diaphragm Cable to Rear Wheels	
<b>Electrical</b> <b>Battery—Freedom Type</b> ..... <b>—Reserve Capacity</b> ..... <b>Delcotron Generator</b> .....	12 Volt; Negative Ground ▲405 CCA ♦ @ 0°F. 75 min. @ 80°F. 37 amp.	
<b>Frame</b> <b>Section Modulus</b> .....	Carbon Steel; 36,39,000 psi 1.78	
<b>Fuel Tank (nominal capacity)</b> .....	13.2 gal.	
<b>Steering Gear Type</b> ..... <b>Linkage</b> .....	Manual; Recirculating Ball Gear Parallelogram	
<b>Transmission</b> <b>Shift Location</b> .....	4-Speed Manual Floor	
<b>Transfer Case</b> ..... <b>Shift Lever</b> .....	— —	New Process 207 2-Speed Single Lever
<b>Tires</b> ..... <b>Spare</b> .....	(4) P195/75R15 (Fiberglass Belted) (1) T155/90D16	
<b>Wheels</b> ..... <b>Spare</b> .....	(4) Disc, 15" x 6" (1) Disc, 16" x 4"	

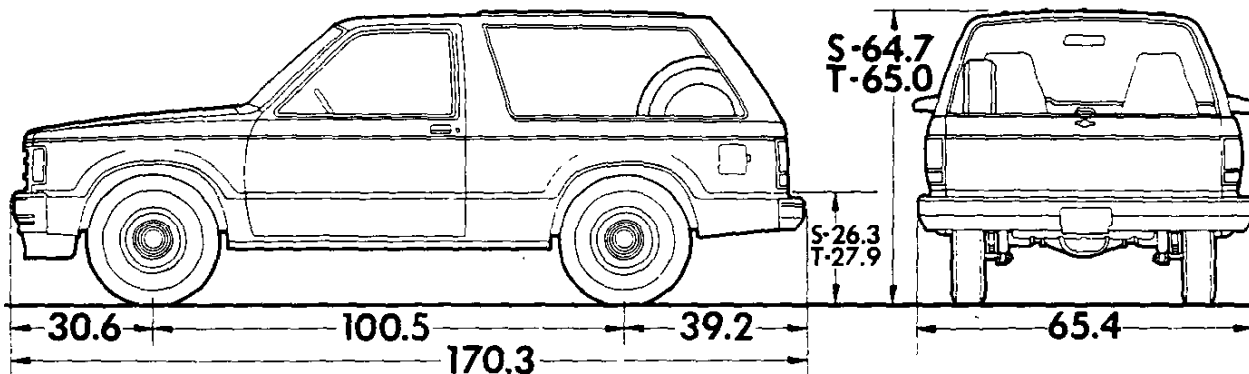
♦ CCA-Cold Cranking Amps

■ Standard engine not available for registration in the State of California; see Power Team Chart.

▲ 315 CCA in California

# S-10/15 BLAZER/JIMMY 2- & 4-WHEEL DRIVE

Body Ordering Code: E55



*At bottom of bumper to grd base vehicle 18.3  
our reply to state is → RANGE - 16.8 - 19.8*

Model	Body Ordering Code	Engine No. Cyl.	Curb Weight (lb)			Model Weights (lb)*			Ground Clearance (in)*
			Front	Rear	Total	Front	Rear	Total	Minimum
<b>S10516</b>	E55	4	1459	1426	2885	1598	1587	3185	6.4
<b>T10516</b>	E55	4	1664	1474	3138	1803	1635	3438	6.6

\* Dimensions with standard equipment, unloaded.

\*Model Weights include curb weight plus occupants (standard seating capacity x 150 lbs.). Total Weight may vary as much as ±100 lbs. to allow for production build variation.

## PAYLOAD SELECTOR

‡Maximum Ratings				Minimum Equipment Required for GVW Rating		
Payload (lb)	GVW Range (lb)	†GAWR (lb)		Tires, Front	Tires, Rear	Chassis Equipment
		Front	Rear			

### S-10/S-15 MODELS (2-WHEEL DRIVE)

<b>1000</b>	3840 to 4550	2100	2550	P195/75R15	P195/75R15	Standard
-------------	--------------	------	------	------------	------------	----------

### S-10/S-15 MODELS (4-WHEEL DRIVE)

<b>1000</b>	4100 to 4860	2300	2684	P195/75R15	P195/75R15	Standard
-------------	--------------	------	------	------------	------------	----------

‡GAWRs shown are the maximum for each axle with the equipment listed. Maximum ratings include an additional 100 lbs. allowance for vehicle weight variance.

†GAWR - Gross Axle Weight Rating.

# S-10/15 BLAZER/JIMMY 2- & 4-WHEEL DRIVE

## POWER TEAMS

Note: All payloads for S Blazer/Jimmy are 1000 lbs

### ALL STATES EXCEPT CALIFORNIA

#### POWER TEAMS (MUST ORDER ENGINE, TRANSMISSION AND REAR AXLE)

ENGINE	TRANSMISSION			AXLES			
	4-SP	5-SP	AUTO	3.08	3.42	3.73	4.11
<b>W/NA5 STANDARD EMISSIONS EQUIPMENT</b>							
<b>—S10516</b>							
LQ2 L4 2.0 Liter 2 BBL	MM4	MM5		—	GQ1	GT4	—
			MX0	—	—	—	GQ1
LR2 V6 2.8 Liter 2 BBL (Reqs N40 Steering)	MM4			GQ1	GU6	—	—
		MM5		—	GQ1	—	—
			MX0	—	GQ1	GT4	—
<b>—T10516</b>							
LQ2 L4 2.0 Liter 2 BBL	MM4	MM5		—	—	GQ1	H04
LR2 V6 2.8 Liter 2 BBL (Reqs N40 Steering)	MM4			*GQ1	GU6	—	—
		MM5		—	GQ1	—	—
			MX0	—	GQ1	GT4	—
<b>W/NA6 HIGH ALTITUDE EMISSIONS EQUIPMENT</b>							
<b>—S10516</b>							
LQ2 L4 2.0 Liter 2 BBL	MM4	MM5		—	—	GQ1	—
			MX0	—	—	—	GQ1
LR2 V6 2.8 Liter 2 BBL (Reqs N40 Steering)	MM4	MM5	MX0	—	—	GQ1	—
<b>—T10516</b>							
LQ2 L4 2.0 Liter 2 BBL	MM4	MM5		—	—	—	GQ1
LR2 V6 2.8 Liter 2 BBL (Reqs N40 Steering)	MM4	MM5	MX0	—	—	GQ1	—

\*N/A P235/75R15 Tires

### CALIFORNIA ONLY

ENGINE	TRANSMISSION			AXLES			
	4-SP	5-SP	AUTO	3.08	3.42	3.73	4.11
<b>W/YF5 CALIFORNIA EMISSION REQUIREMENTS</b>							
<b>—S10516</b>							
LR1 L4 1.9 Liter 2 BBL	MM4	MM5		—	GQ1	GT4	—
			MX1	—	—	GQ1	H04
LR2 V6 2.8 Liter 2 BBL (Reqs N40 Steering)	MM4			GQ1	GU6	—	—
		MM5		—	GQ1	—	—
			MX0	—	GQ1	GT4	—
<b>—T10516</b>							
LR1 L4 1.9 Liter 2 BBL	MM4	MM5		—	—	GQ1	H04
LR2 V6 2.8 Liter 2 BBL (Reqs N40 Steering)	MM4			—	GQ1	—	—
		MM5		—	GQ1	—	—
			MX0	—	GQ1	GT4	—

\*N/A P235/75R15 Tires

### ENGINE RATINGS—ALL STATES

SAE Net Ratings	1.9 Liter 119-2 BBL L4	2.0 Liter* 121-2 BBL L4	2.8 Liter 173-2 BBL V6
Net Horsepower . . . . .	82 @ 4600 rpm	83 @ 4600 rpm	110 @ 4800 rpm
Net Torque, lb-ft . . . . .	101 @ 3000 rpm	108 @ 2400 rpm	145 @ 2100 rpm

\*Not available for registration in the State of California.

# S10/15 2 AND 4 WHEEL DRIVE BLAZER/JIMMY (1000-lb Payload)

## 1983 VEHICLES WITH STANDARD EQUIPMENT

Prices shown are effective with initial shipment of 1983 model motor vehicles

Description	Model Number	Body Code	Wheel Base	Factory D&H(a)	List Price	Mfr's Suggested Retail Price★	Group Number
◆ 4-Cylinder 2.0 Liter 2 BBL L4 Engine-Engine Ordering Code LQ2							
<b>S10/15 Series 2-Wheel Drive</b>							
Tailgate.....	CS/TS10516	E55	100.5"	10.24	8229.00	8239.24	11
<b>S10/15 Series 4-Wheel Drive</b>							
Tailgate.....	CT/TT10516	E55	100.5"	10.24	9423.00	9433.24	11

★ Manufacturer's Suggested Retail Prices do not include applicable destination charges, state and local taxes, license fees, optional equipment or accessories or special items or services.

◆ Refer to Power Team Chart for California Emission Certification Requirements.

## OPTIONS AND ACCESSORIES WHEN INSTALLED BY GENERAL MOTORS

Prices shown are effective with initial shipment of 1983 model motor vehicles

Description	Option Number	Factory D&H(a)	List Price	Mfr's Suggested Retail Price◇
<b>Tahoe/Sierra Classic Equipment:</b> (See Interior and Exterior Color Selection Charts) Includes color-keyed door handle inserts, B84 Body Side and Bright Wheel Opening Moldings, black quarter window moldings, special tailgate applique, P06 Wheel Trim Rings, P17 Spare Tire Cover, nameplate on instrument panel, special door trim with coin holder in LH door panel, deluxe armrest and map pockets, special color-keyed carpeting, D34 Visor Mirror, special body insulation and Z53 Gage Package with Trip Odometer.....				
	YC2	N.A.	576.00	576.00
<b>Sport/Gypsy Equipment:</b> (See Interior and Exterior Color Selection Charts) Available only when ZY7 Sport Two-Tone Paint and Sport Cloth Trim is specified. Includes A78 Reclining Seat Backs, D55 Console, VE6 Color-Keyed Front and Rear Bumpers, color-keyed door handle inserts, P17 Spare Tire Cover, B84 Body Side and Black Wheel Opening Moldings, black quarter window moldings, special tailgate applique, nameplate on instrument panel, special door trim with coin holder in LH door panel, deluxe armrests and map pockets, color-keyed carpeting, D34 Visor Mirror, special body insulation and Z53 Gage Package with Trip Odometer.				
S10516 only. Includes ZJ7 Argent Styled Wheels.....	YC3	N.A.	944.00	944.00
T10516 only. Includes P06 Trim Rings.....	YC3	N.A.	910.00	910.00
<b>Seat Trim:</b> (See Interior and Exterior Color Selection Chart for availability and ordering information).				
Custom Vinyl High Back Buckets. Driver and Passenger. Not available when YC3 is specified.....			NO ADDITIONAL CHARGE	
Special Custom Cloth High Back Buckets. Available only when YC2 is specified.....			NO ADDITIONAL CHARGE	
Sport Cloth High Back Buckets. Included only when YC3 is specified			NO ADDITIONAL CHARGE	
Without AM7 Rear Seat.....			24.00	24.00
With AM7 Rear Seat.....		N.A.		
High Country Sheepskin High-Back Bucket Seats. Driver and Passenger only. With YC2 and AM7 Optional seat. Optional seat is Custom Cloth Trim. With YC3 and AM7 Optional Rear Seat. Optional seat is Sport Cloth Trim. Available only when YC2 or YC3 is specified.....		N.A.	295.00	295.00
<b>Paints, Exterior:</b> (See Interior and Exterior Color Selection Chart for ordering information and paint application).				
Solid.....	ZY1		NO ADDITIONAL CHARGE	
<b>Sport Two-Tone.</b> Included when YC3 is specified.				
Without YC2. Includes striping that matches secondary paint color except when YC3 is specified. Area below striping painted secondary color choice.....	ZY7	N.A.	210.00	210.00
With YC2. Area below B84 Body Side and Bright Wheel Opening Moldings painted secondary color choice.....	ZY7	N.A.	145.00	145.00
Special Two-Tone. Middle area painted secondary color choice.				
Without YC2. Includes B84 Body Side and Bright Wheel Opening Moldings.	ZY8	N.A.	291.00	291.00
With YC2.....	ZY8	N.A.	152.00	152.00

(a) D & H Charges on vehicle and optional equipment include reimbursement to ordering Division for any tax that it has paid, incurred or agreed to pay thereon.  
◇ State and local taxes not included.

# S10/15 2 AND 4 WHEEL DRIVE BLAZER/JIMMY

## OPTIONS AND ACCESSORIES WHEN INSTALLED BY GENERAL MOTORS

Prices shown are effective with initial shipment of 1983 model motor vehicles

Description	Option Number	Factory D&H(a)	List Price	Mfr's Suggested Retail Price◇
<b>Emission Systems:</b> Dealer Note - One of the following emission options must be specified. (See Power Teams Chart for Engine and Transmission Availability), California Emission Requirements. Includes all testing, equipment and /or certification necessary for registration in the state of California. Not Available when NA5 Standard Emissions or NA6 High Altitude Emissions are specified				
High Altitude Emission Equipment. . . . .	YF5	N.A.	75.00	75.00
Standard Emission Equipment. Not available when YF5 California Emissions or NA6 High Altitude Emissions are specified. . . . .	NA6		NO ADDITIONAL CHARGE	
	NA5		NO ADDITIONAL CHARGE	
<b>Engines:</b> (See Power Teams Chart for availability and complete specifications)				
2.8 Liter 2 BBL V6. Available only when N40 Power Steering is specified . . . .	LR2	N.A.	243.00	243.00
2.0 Liter 2 BBL L4 . . . . .	LQ2		NO ADDITIONAL CHARGE	
1.9 Liter 2 BBL L4. Available only when YF5 California Emissions are specified	LR1		NO ADDITIONAL CHARGE	
<b>Transmissions:</b> (See Power Teams Chart for availability and complete specifications).				
3-Speed Automatic. S10516 only. Available only when YF5 California Emissions and LR1 1.9 Liter Engine are specified . . . . .	MX1	N.A.	475.00	475.00
4-Speed Automatic with Overdrive. Not available when LR1 1.9 Liter Engine is specified. T1 Series is also not available when LQ2 2.0 Liter Engine is specified	MX0	N.A.	650.00	650.00
4-Speed Manual . . . . .	MM4		NO ADDITIONAL CHARGE	
5-Speed Manual with Overdrive. . . . .	MM5	N.A.	225.00	225.00
<b>Axles, Rear:</b> (See Power Teams Chart for option number selection, availability and complete specifications)				
Optional Ratio . . . . .		N.A.	36.00	36.00
Locking Differential . . . . .	G80	N.A.	230.00	230.00
<b>Tires:</b> Includes Compact Spare Tire				
All wheel size, Front and Rear are 6.00" except when QEB Tires, N90 or ZJ7 Wheels are specified, then wheel size is 7.00". (See Tire Charts for Tire Availability)				
TUBELESS				
P195/75R15 Highway Fiberglass Belted Radial Ply Blackwall (Maximum Capacity 1342-lbs) . . . . .	QYP		NO ADDITIONAL CHARGE	
P195/75R15 Highway Fiberglass Belted Radial Ply Whitewall (Maximum Capacity 1342-lbs) . . . . .	QYQ	N.C.	64.00	64.00
P205/75R15 Highway Steel Belted Radial Ply Blackwall (Maximum Capacity 1453-lbs) . . . . .	QJU	1.28	97.00	98.28
P205/75R15 Highway Steel Belted Radial Ply Whitewall (Maximum Capacity 1453-lbs) . . . . .	QJW	1.28	165.00	166.28
P205/75R15 Highway Steel Belted Radial Ply White Lettered (Maximum Capacity 1453-lbs) . . . . .	QMC	1.28	188.00	189.28
P205/75R15 On-Off Road Steel Belted Radial Ply Blackwall (Maximum Capacity 1453-lbs) . . . . .	QJT	1.60	133.00	134.60
P235/75R15 On-Off Road Steel Belted Radial Ply White Lettered (Maximum Capacity 1453-lbs). T1 Series only. Available only when ZK5 Full Size Spare Tire is specified. Included when Z71 Chassis Equipment Package is specified . . . . .	QEB	4.16	360.00	364.16
P205/75R15 On-Off Road Steel Belted Radial Ply Blackwall (Front Highway, Rear On-Off Road) (Maximum Capacity 1453-lbs). S1 Series only. . . . .	Q1C	1.44	115.00	116.44

(a) D & H Charges on vehicle and optional equipment include reimbursement to ordering Division for any tax that it has paid, incurred or agreed to pay thereon.  
 ◇ State and local taxes not included.

# S10/15 2 AND 4 WHEEL DRIVE BLAZER/JIMMY

## OPTIONS AND ACCESSORIES WHEN INSTALLED BY GENERAL MOTORS

Prices shown are effective with initial shipment of 1983 model motor vehicles

Description	Option Number	Factory D&H(a)	List Price	Mfr's Suggested Retail Price ◊
<b>OTHER OPTIONS</b>				
<b>Air Conditioning: All-Weather</b> LR1 1.9 Liter Engine is not available when C49 Rear Window Defogger is specified. Available only when N40 Power Steering is specified. Includes V01 H.D. Radiator when V02 Radiator and Transmission Oil Cooler is not specified. Without C49 Rear Window Defogger, also includes K81 66-Amp Generator.	C60	N.A.	690.00	690.00
<b>Battery: Heavy-Duty.</b> 515 Cold Cranking Amps, Delco Freedom. Included when V10 Cold-Climate Package is specified.	UA1	N.A.	48.00	48.00
<b>Bumper Equipment:</b> <i>Bumpers, Painted.</i> Color-Keyed with rub strips. Front and Rear. Available only when ZY7 Sport or ZY8 Special Two-Tone Paint is specified. Included when YC3 is specified	VE6	NO ADDITIONAL CHARGE		
<i>Bumper Guards, Front Black</i>	V28	N.A.	29.00	29.00
<b>Carrier, Luggage</b>	V55	N.A.	115.00	115.00
<b>Chassis Equipment: Off-Road Package.</b> T10516 only. Not available when F51 H.D. Shock Absorbers are specified. Includes QEB P235/75R15 tires, ZK5 Full Size Spare, special torsion bars, shock absorbers, jounce bumpers, front stabilizer, V76 Tow Hooks and NY7 Transfer Case Shield				
Without YC2 or YC3. Includes P06 Trim Rings	Z71	5.71	625.00	630.71
With YC2 or YC3	Z71	5.71	571.00	576.71
<b>Clock: Electronic Digital.</b> Available only when U63 or U69 Radio is specified	UE8	N.A.	39.00	39.00
<b>Cold-Climate Package:</b> Includes UA1 H.D. Battery and special insulation. Without C60 Air Conditioning or C49 Defogger. Includes K81 66-Amp Generator				
Without YC2 or YC3	V10	N.A.	170.00	170.00
With YC2 or YC3	V10	N.A.	129.00	129.00
With C60 Air Conditioning or C49 Defogger				
Without YC2 or YC3	V10	N.A.	110.00	110.00
With YC2 or YC3	V10	N.A.	69.00	69.00
<b>Console: Front Compartment Floor.</b> Included when YC3 is specified	D55	N.A.	99.00	99.00
<b>Coolers:</b> <i>Engine Oil.</i> Available only when LR2 2.8 Liter Engine, MX0 Automatic Transmission and V01 H.D. Radiator or V02 H.D. Radiator and Transmission Oil Cooler are specified	KC4	N.A.	116.00	116.00
<i>Radiator and Transmission Oil.</i> Available only when LR2 2.8 Liter Engine and MX0 Automatic Transmission are specified.				
Without C60 Air Conditioning	V02	N.A.	108.00	108.00
With C60 Air Conditioning	V02	N.A.	57.00	57.00
<b>Cooling: Radiator, Heavy-Duty.</b> Not available when V02 Radiator and Transmission Oil Cooler is specified. Included when C60 Air Conditioning is specified.	V01	N.A.	51.00	51.00
<b>Cover, Spare Tire:</b> Included when YC2 or YC3 is specified.	P17	N.A.	31.00	31.00
<b>Deflector, Air</b>	C51	N.A.	40.00	40.00
<b>Defogger, Rear Window: Electric.</b> Without C60 Air Conditioning or V10 Cold-Climate Package. Includes K81 66-Amp Generator	C49	N.A.	135.00	135.00
With C60 Air Conditioning or V10 Cold-Climate Package	C49	N.A.	75.00	75.00
<b>Door Lock System, Power: Side Doors only.</b> Included when ZQ2 Operating Convenience Package is specified.	AU3	N.A.	125.00	125.00
<b>Engine Block Heater</b>	K05	N.A.	31.00	31.00
<b>Floor Covering: Mats, Color-Keyed.</b> Available only when YC2 or YC3 is specified.				
Front	B32	N.A.	14.00	14.00
Rear	B33	N.A.	11.00	11.00
<b>Gages:</b> <i>Voltmeter, Temperature, Oil Pressure and Trip Odometer.</i> Included when YC2, YC3 or U16 Tachometer is specified.	Z53	N.A.	56.00	56.00
<i>Tachometer.</i> Without YC2 or YC3. Includes Z53 Gage Package	U16	N.A.	109.00	109.00
With YC2 or YC3	U16	N.A.	53.00	53.00

(a) D & H Charges on vehicle and optional equipment include reimbursement to ordering Division for any tax that it has paid, incurred or agreed to pay thereon.  
◊ State and local taxes not included.

# S10/15 2 AND 4 WHEEL DRIVE BLAZER/JIMMY

## OPTIONS AND ACCESSORIES WHEN INSTALLED BY GENERAL MOTORS

Prices shown are effective with initial shipment of 1983 model motor vehicles

Description	Option Number	Factory D&H(a)	List Price	Mfr's Suggested Retail Price ◇
<b>OTHER OPTIONS</b>				
<b>Generator:</b> 66-Amp Delcotron. Not available when C60 Air Conditioning is specified with C49 Rear Window Defogger. Included when C60 Air Conditioning, C49 Rear Window Defogger or V10 Cold-Climate Package is specified	K81	N.A.	60.00	60.00
<b>Glass:</b>				
<i>Deep Tinted.</i> Includes dark laminated glass on rear quarters and rear window.	AJ1	N.A.	177.00	177.00
<i>Deep Tinted with Light Tinted Rear Window.</i> Not available when AJ1 Deep Tinted Glass is specified. Includes dark laminated glass on rear quarter windows	AA3	N.A.	123.00	123.00
<b>Headlamps, Halogen</b>	TT4	N.A.	21.00	21.00
<b>Lamp, Engine Compartment</b>	U26	N.A.	15.00	15.00
<b>Mirrors, Exterior:</b> LH and RH. Below-Eye-Line Type.				
<i>Painted</i>	D44	N.A.	47.00	47.00
<i>Bright</i>	D45	N.A.	76.00	76.00
<b>Mirror, Visor:</b> RH. Included when YC2 or YC3 is specified	D34	N.A.	7.00	7.00
<b>Moldings:</b>				
<i>Body Side and Wheel Opening.</i> Included when YC2, YC3 or ZY8 Special Two-Tone Paint is specified. Includes lower side and rear moldings of black plastic with bright trim and wheel opening moldings.				
Without ZY7 Sport Two-Tone Paint	B84	N.A.	139.00	139.00
With ZY7 Sport Two-Tone Paint	B84	N.A.	74.00	74.00
<i>Guards, Door Edge</i>	B93	N.A.	16.00	16.00
<i>Wheel Opening.</i>				
Bright. Not available when YC3 is specified. Included when YC2 or ZY8 Special Two-Tone Paint is specified. Also included with B84 Body Side and Wheel Opening Moldings except when YC3 is specified	B96	N.A.	28.00	28.00
Black. Included when YC3 is specified. Not available when B96 Bright Wheel Opening Moldings are specified				
Without B84 Body Side and Wheel Opening Moldings	B74	N.A.	40.00	40.00
With B84 Body Side and Wheel Opening Moldings	B74	N.A.	12.00	12.00
<b>Operating Convenience Package:</b> Includes AU3 Power Door Locks and A31 Power Windows	ZQ2	N.A.	300.00	300.00
<b>Preliminary Price Information</b>	B3W	N.A.	N.A.	N.A.
<b>Radio Equipment:</b>				
<i>AM Radio</i>	U63	N.A.	112.00	112.00
<i>AM/FM Radio</i>	U69	N.A.	171.00	171.00
<i>AM/FM Stereo Radio. Electronically Tuned</i>	UU9	N.A.	238.00	238.00
<i>AM/FM Stereo Radio with Clock. Electronically Tuned</i>	UL1	N.A.	277.00	277.00
<i>AM/FM Stereo Radio and Stereo Cassette Tape with Clock. Electronically Tuned</i>	UU7	N.A.	377.00	377.00
<i>AM/FM Stereo Radio and Stereo Cassette Tape with Seek/Scan and Clock. Electronically Tuned</i>	UM6	N.A.	555.00	555.00
<i>Speakers, Premium Dual Rear.</i> Available only when UL1, UU9 or UU7 Radio is specified. Included when UM6 Radio is specified	U66	N.A.	25.00	25.00
<b>Seats:</b> (Dealer Note- AM7 Rear Seat or YG4 Rear Seat Not Desired must be specified. Added weight includes passenger weight allowance of 150-lbs per seating position)				
<i>Folding Rear Bench.</i> Includes armrests	AM7	N.A.	325.00	325.00
<i>Optional Seat Not Desired</i>	YG4	NO ADDITIONAL CHARGE		
<i>Seat Backs, Reclining. R.H. and L.H.</i> Included when YC3 is specified	A78	N.A.	65.00	65.00
<b>Shield Transfer Case:</b> T1 Series only. Included when Z71 Chassis Equipment is specified	NY7	N.A.	65.00	65.00
<b>Shock Absorbers:</b> Heavy-Duty, Front and Rear. Not available when Z71 Chassis Equipment is specified	F51	N.A.	32.00	32.00
<b>Spare Tire:</b> Full size. Mounted flat in loadspace. Included with Z71 Chassis Equipment. Replaces Standard Compact Spare Highway				
With QYP P195/75R15 Highway Fiberglass Belted Radial Ply Blackwall	ZK4	.51	31.00	31.51
With QYQ P195/75R15 Highway Fiberglass Belted Radial Ply Whitewall	ZK4	.51	40.00	40.51
With QJU P205/75R15 Highway Steel Belted Radial Ply Blackwall	ZK4	.83	52.00	52.83
With QJW P205/75R15 Highway Steel Belted Radial Ply Whitewall	ZK4	.83	55.00	55.83
With QMC P205/75R15 Highway Steel Belted Radial Ply White Lettered	ZK4	.83	70.00	70.83
With Q1C P205/75R15 Highway (Front) On-Off Road (Rear) Steel Belted Radial Ply Blackwall. S1 Series only	ZK4	.83	52.00	52.83

(a) D & H Charges on vehicle and optional equipment include reimbursement to ordering Division for any tax that it has paid, incurred or agreed to pay thereon.

◇ State and local taxes not included.



# S10/15 2 AND 4 WHEEL DRIVE BLAZER/JIMMY

## OPTIONS AND ACCESSORIES WHEN INSTALLED BY GENERAL MOTORS

Prices shown are effective with initial shipment of 1983 model motor vehicles

Description	Option Number	Factory D&H(a)	List Price	Mfr's Suggested Retail Price ◊
<b>OTHER OPTIONS</b>				
<b>Spare Tire: (Continued)</b>				
On-Off Road				
With QJT P205/75R15 Steel Belted Radial Ply Blackwall On-Off Road Front and Rear Tire	ZK5	.91	54.00	54.91
With QEB P235/75R15 Steel Belted Radial Ply White Lettered On-Off Road Front and Rear Tires. T1 Series only	ZK5	1.55	90.00	91.55
<b>Speed Control, Electronic:</b> Not available with M40 Automatic Transmission when LQ2 2.0 Liter Engine is specified.	K34	N.A.	185.00	185.00
<b>Steering:</b>				
Power	N40	N.A.	247.00	247.00
Power, Not Desired. Not available when Z82 Trailering Special is specified	N51	NO ADDITIONAL CHARGE		
<b>Steering Wheel: Comfortilt</b>	N33	N.A.	105.00	105.00
<b>Striping:</b> Available only when ZY1 Solid Paint is specified. Not available when B84 Body Side and Wheel Opening Moldings, YC2 or YC3 is specified. Included when ZY7 Sport Two-Tone Paint is specified				
Almond	65A	N.A.	65.00	65.00
Black	09A	N.A.	65.00	65.00
Blue, Dark	29A	N.A.	65.00	65.00
Red	72A	N.A.	65.00	65.00
Silver	17A	N.A.	65.00	65.00
White	12A	N.A.	65.00	65.00
<b>Tailgate Lock System: Power</b>	AU6	N.A.	35.00	35.00
<b>Tank, Fuel: LH Frame Mounted.</b> Replaces Standard Production Fuel Tank. Approximately 20-gallon capacity	NK2	N.A.	45.00	45.00
<b>Towing Device: Two Front Towing Hooks.</b> T1 Series only. Included when Z71 Chassis Equipment is specified	V76	N.A.	35.00	35.00
<b>Trailer Hitch: Dead Weight Type.</b> 2,000-lb Capacity. Not available when Z82 H.D. Trailering is specified. Included when Z72 L.D. Trailering is specified	VR2	N.A.	62.00	62.00
<b>Trailering Special: (Refer Trailering Guide for additional information).</b>				
<b>Heavy-Duty.</b> Available only when LR2 2.8 Liter Engine, N40 Power Steering, MX0 Automatic Transmission and V02 Radiator and Transmission Oil Cooler are specified. Also requires K81 66-Amp Generator when C60 Air Conditioning, V10 Cold-Climate Package or C49 Rear Window Defogger is not specified. 3.73 Rear Axle Ratio available only when KC4 Engine Oil Cooler is specified. Includes 7-lead wiring harness, weight distributing hitch platform and H.D. flasher	Z82	N.A.	193.00	193.00
<b>Light Duty.</b> Available only when MX0 or MX1 Automatic Transmission and V01 H.D. Cooling, V02 Radiator and Transmission Oil Cooler or C60 Air Conditioning are specified. Also available only when 3.73 rear axle ratio is specified with LR1 1.9 Liter Engine. Includes 5-lead wiring harness and VR2 Dead Weight Trailer Hitch	Z72	N.A.	100.00	100.00
<b>Wheel Trim: Trim Rings.</b> Included when ZJ7 Styled Wheels, Z71 Chassis Equipment, YC2 or YC3 is specified	P06	N.A.	54.00	54.00
<b>Wheels:</b>				
<b>Styled.</b> Wheel size 7". Four wheels only. S1 Series only. Includes special hub caps and P06 Trim Rings. Included when YC3 is specified.				
Without YC2	ZJ7	N.A.	88.00	88.00
With YC2	ZJ7	N.A.	34.00	34.00
<b>Aluminum. Cast.</b> Wheel size 7". Four wheels only. T1 Series only.				
Without YC2 or YC3	N90	N.A.	285.00	285.00
With YC2 or YC3	N90	N.A.	231.00	231.00
<b>Windows:</b>				
<b>Power, Side Doors.</b> Included when ZQ2 Operating Convenience Package is specified	A31	N.A.	175.00	175.00
<b>Sliding Side</b>	A05	N.A.	225.00	225.00
<b>Windshield Wiper System: Intermittent</b>	CD4	N.A.	49.00	49.00

(a) D & H Charges on vehicle and optional equipment include reimbursement to ordering Division for any tax that it has paid, incurred or agreed to pay thereon.  
 ◊ State and local taxes not included.

# NOTES

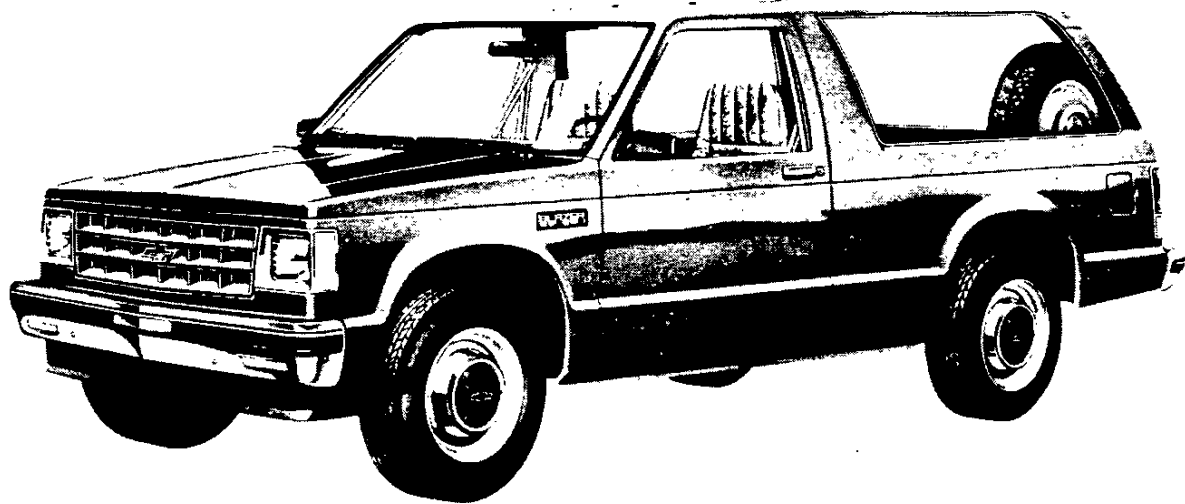
# **S-10/15 BLAZER/JIMMY 2- & 4-WHEEL DRIVE**

**CAB & BODY FEATURES  
SEATING ARRANGEMENTS  
CAB DIMENSIONS  
COLOR & TRIM CHARTS  
TWO-TONES**

# S-10/15 BLAZER/JIMMY 2- & 4-WHEEL DRIVE

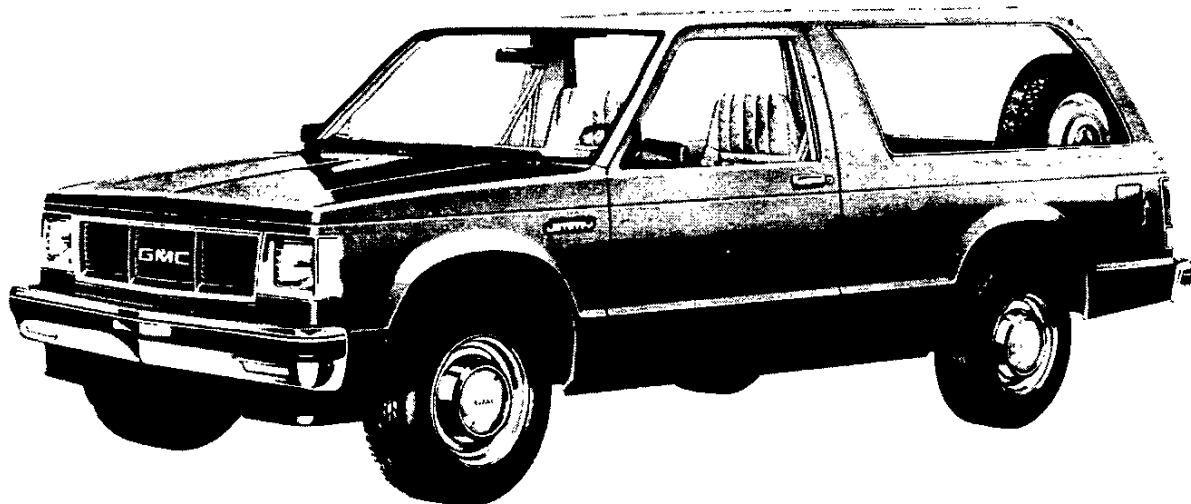
## STANDARD MODEL—FEATURES

The standard models include the following items as standard equipment



### EXTERIOR

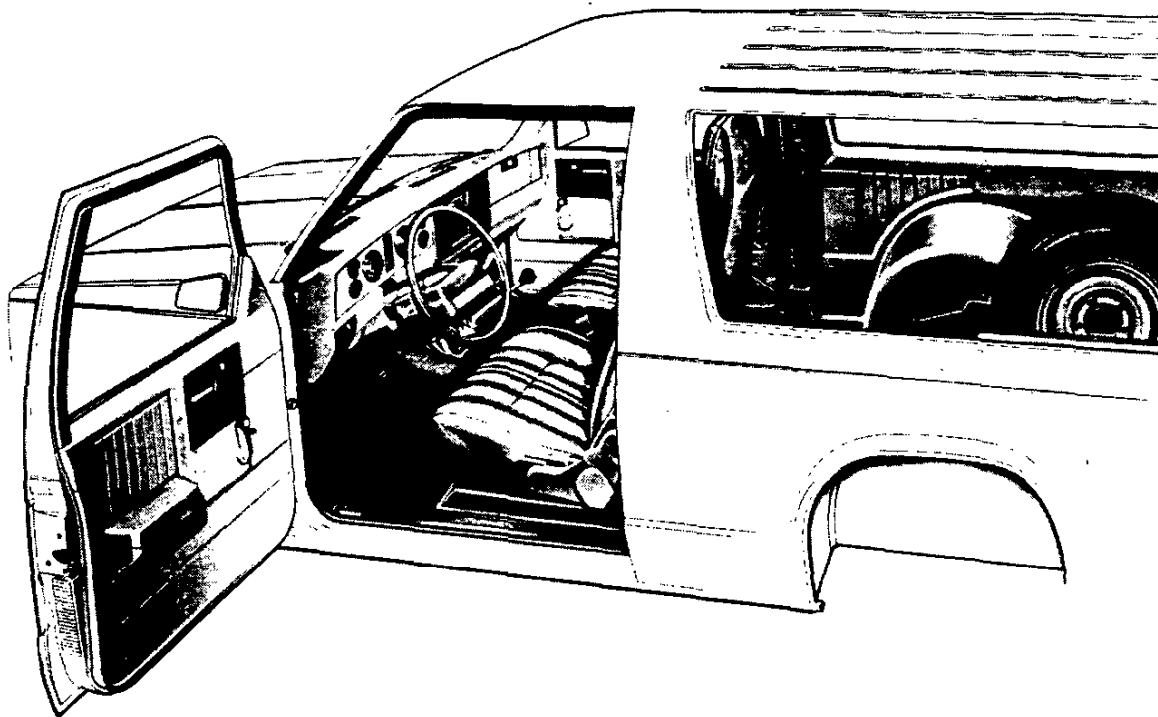
- **Bumper:** Front and rear, chromed with black rub strips; front bumper incorporates parking lamps
- **Color:** See Interior and Exterior Color Selection Chart
- **Endgate-Liftglass:** Single pivot hinges on endgate and liftglass; latches on each side of endgate and at center for liftglass; gas cylinders attached to the black metal glass frame operate liftglass and provide check; cable checks on endgate; lift handle on glass. Center Key operated lock releases liftglass when turned to the left and endgate latches when turned to the right.
- **Glass:** Tinted, all windows
- **Grille:** Molded plastic; chrome and black; integral Chevrolet emblem/GMC letters at center of grille
- **Headlamp-Parking Lamp Bezels:** Molded plastic with chromed finish and black trim
- **Horn:** Single, electric, high-note
- **Hub Caps:** Bright metal with black trim
- **Keys:** Two-key system; with separate keys for ignition switch and door locks
- **Lettering, Endgate:** Black or silver decal on embossed Chevrolet/GMC letters depending on exterior color
- **Lights:**
  - Backup lamps: Two rear (integral with taillamps)
  - Combination parking/direction/hazard: Two front
  - Combination tail/stop/direction/hazard: Two rear
  - Headlamps: Two, rectangular
  - License plate lamp: Single rear
  - Side marker lamps with reflectors: Two front; two rear (integral with taillamps)
- **Mirrors:** RH and LH fixed arm with adjustable 6½" wide x 4" high aerodynamic heads; low gloss black finish. RH mirror is convex
- **Moldings:** Low-gloss black windshield and rear window
- **Nameplates:** Bright "Blazer/Jimmy" nameplates on front fenders near doors. 4-wheel-drive models have a "4x4" nameplate mounted below the fender nameplate
- **Wheels:** Painted argent
- **Windshield Wipers and Washers:** Electric, 2-speed wipers with low-gloss black finish on exposed metal portions; coordinated washer with fluidic oscillator at center of plenum inlet grille



# S-10/15 BLAZER/JIMMY 2- & 4-WHEEL DRIVE

## STANDARD MODEL—FEATURES

The standard models include the following items as standard equipment



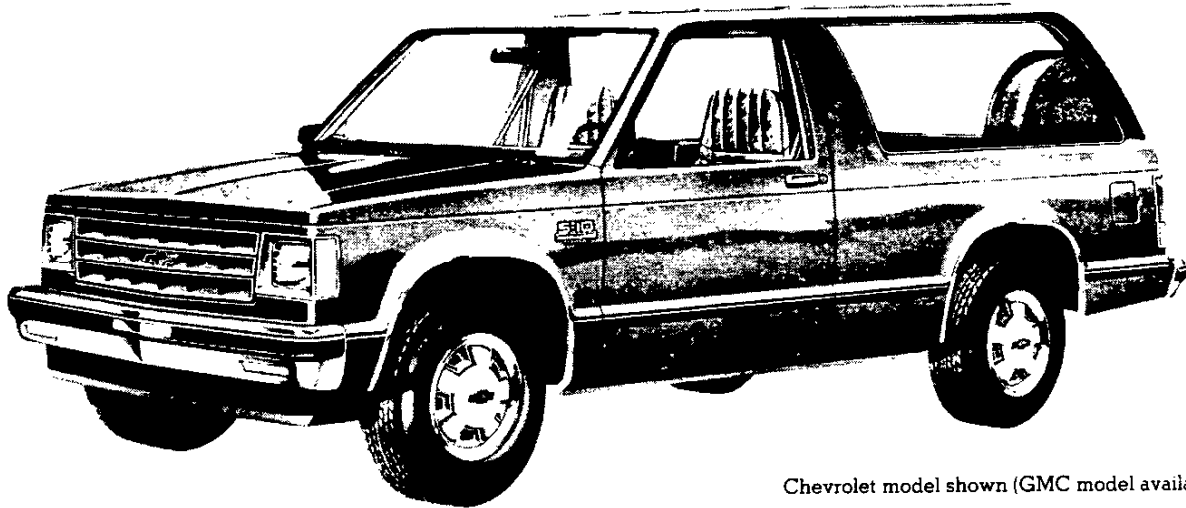
### INTERIOR

- **Armrests:** RH and LH padded; integral with door trim panels
- **Ashtray:** In middle of instrument panel
- **Cigar Lighter:** With ashtray light
- **Coat Hook:** RH side
- **Colors:**
  - Painted areas: Same as exterior primary color choice
  - Interior trim: Coordinated with seat trim color choice
- **Dome Lamps:** Front and rear; with bright trim
- **Door Sill Plates:** Door-opening protection and floor mat retention; full-length; black plastic. Color-keyed plastic endgate scuff plate
- **Door Trim Panels:** Color-keyed, embossed molded plastic with integral armrests; black trim plate in regulator area
- **Floor Covering:** Color-keyed rubber mat for entire floor area
- **Headliner:** Color-keyed; full coverage molded styrene full foam with color-keyed cloth cover. 4-wheel-drive models have a color-keyed grab handle mounted over RH door
- **Headlamp Warning Buzzer**
- **Heater and Defogger:** Heavy-duty outside air type with power center and outboard instrument panel vents and side window defoggers
- **Hood Lock Release:** Handle located on LH side of instrument panel
- **Instrument Cluster Bezel:** Argent finish with bright trim
- **Instruments:**
  - Gages: Speedometer, odometer and fuel
  - Switches: Main, for control of exterior lights, instrument cluster lights, and cab interior lights; combination steering column switch for direction signals by moving lever up and down, headlamp beams by moving lever fore and aft, and windshield wiper and washer by turning lever to wipe and pressing lever in to wash; hazard warning; heater fan
  - Warning lights: Seat belt, service-parking brake, direction/hazard signal, and high beam
- **Instrument Panel Control Knobs:** Soft black plastic (except heater and wiper-washer controls) with white graphic identification
- **Instrument Panel Pad:** Color-keyed, energy-absorbing foam type with injection molded plastic substrate
- **Insulation and Sound Deadening Material:** On dash (fire-wall), under floor mat, spray deadener inside of doors, plugs on windshield pillars, on roof underside, and on headliner
- **Lights:** Instrument cluster, door-operated courtesy and dome lamps, and glove box lamp
- **Mirror, Rearview:** 10" prismatic with soft vinyl rim
- **Pillar Trim Moldings:** Color-keyed molded plastic on windshield pillars
- **Seats:** Driver and passenger, foam padded high back bucket type with all vinyl leather grain trim. RH seat includes easy entry feature. See Interior and Exterior Color Selection Chart for color and trim availability
- **Seat Belts:** Driver and passenger non-detachable combination lap and shoulder belts with emergency-locking retractors. Seat belts are color-keyed with pushbutton type buckles
- **Spare Tire Mounting:** On LH side panel behind wheelhousing  
Note: P205 and P235 full-size spare tire and wheel (available at extra cost) are stored flat at rear of body on floor.
- **Steering Wheel and Column:** 15¼" deluxe color-keyed soft plastic wheel with 2 spokes; deluxe color-keyed energy-absorbing steering column with anti-theft locking feature
- **Stowage Box:** In RH side of instrument panel; with bright key-operated lock and "S-10/S-15 Sierra" nameplate; lock operated by door key
- **Sunshades:** RH and LH padded; color-keyed
- **Tools:** Mechanical jack and wheel wrench behind seat on LH side

## S-10/15 BLAZER/JIMMY 2- & 4-WHEEL DRIVE

### TAHOE/SIERRA CLASSIC MODEL OPTION—RPO YC2

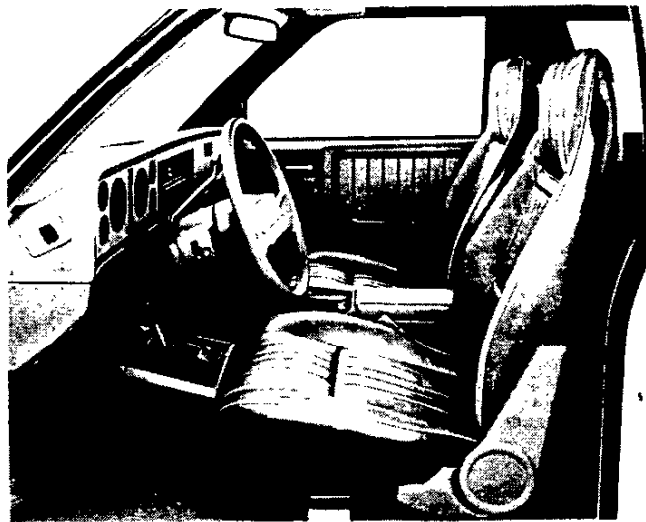
This option includes all standard model items plus the additions or substitutions listed below



Chevrolet model shown (GMC model available)

#### EXTERIOR

- **Bright Appearance Items:**
  - Body side molding trim
  - Bright applique panel fitted over central area of endgate with black "Chevrolet/GMC" lettering and trim
  - Bright wheel opening lip moldings
  - Wheel trim rings
- **Cab-to-Fender Insulators**
- **Door Handle Inserts:** Body color
- **Hood Insulator**
- **Moldings:** Black plastic body side moldings with bright insert and rear quarter window moldings
- **Endgate Trim:** Black applique with bright "Chevrolet/GMC" lettering and trim

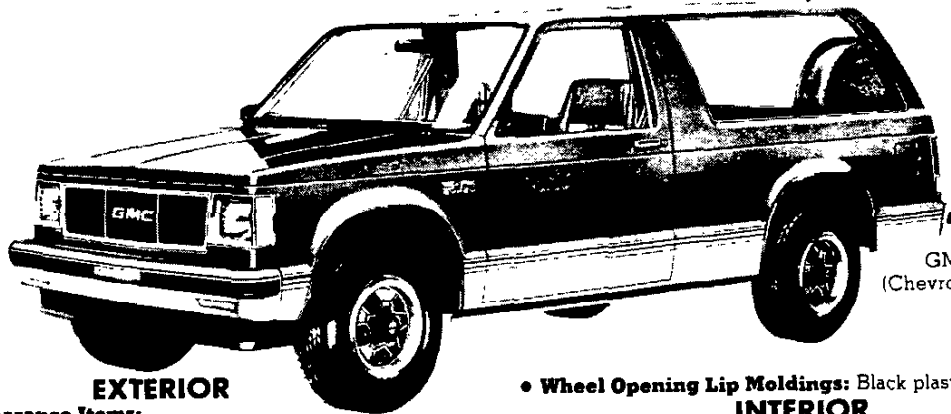


#### INTERIOR

- **Bright Appearance Items:**
  - "Tahoe/Sierra Classic" nameplate on stowage box door
  - Trim on instrument cluster bezels
  - Trim on door trim panels
- **Door Trim Panels:** Sport cloth insert plus brush-finished applique in regulator area; carpeted lower insert with pocket, plus coin holder in LH door
- **Floor Covering:** Color-keyed carpeting for entire floor area
- **Instrument Cluster:** Voltmeter, oil pressure gage and engine temperature gage replace warning lamps; also includes trip odometer
- **Instrument Cluster Bezel:** Brushed aluminum with bright trim
- **Insulation and Sound Deadening Material:** On plenum panels (part of specific dash mat), under floor carpeting, extra-thick on headliner, on door trim panels, and on lower portion of instrument panel
- **Seats:** Choice of: 1) all vinyl leather grain trim; 2) Special Custom cloth/vinyl trim; or 3) High Country sheepskin high back bucket seats (at extra cost). See Interior and Exterior Color Selection Chart for color and trim availability
- **Spare Tire Cover:** Color-keyed carpet and vinyl
- **Trim Panels and Moldings:** Color-keyed cowl kick panels; lower rear quarter and endgate panels and jack cover
- **Visor Mirror:** On RH sun visor

## S-10/15 BLAZER/JIMMY 2- & 4-WHEEL DRIVE SPORT/GYPSY MODEL OPTION—RPO YC3

This option includes all items in the Tahoe/Sierra Classic model option plus the additions or substitutions listed below



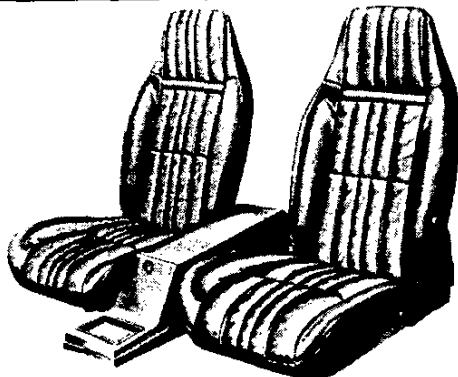
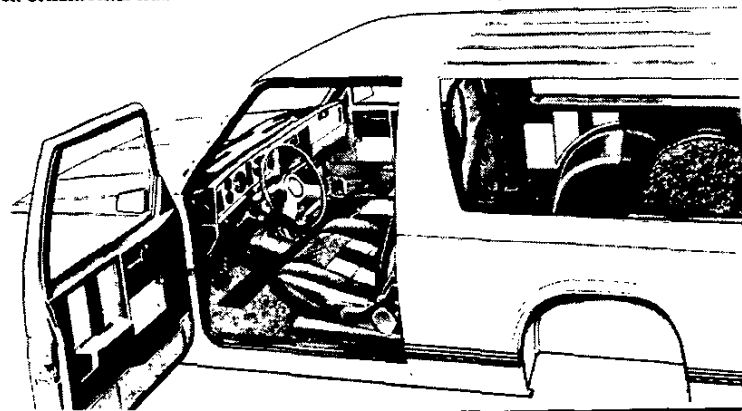
GMC model shown  
(Chevrolet model available)

### EXTERIOR

- **Bright Appearance Items:**  
Delete bright wheel opening lip moldings
- **Bumpers:** Color-keyed to lower accent color, with black rub strips
- **Endgate Trim:** Black or silver (depending on exterior color) applique with bright "Chevrolet/GMC" lettering and trim replaces bright panel over central area
- **Two-Tone Paint:** ZY7 lower-accent paint
- **Wheels:** Styled; painted argent with black trim; includes bright wheel trim rings and black ornamental hubs

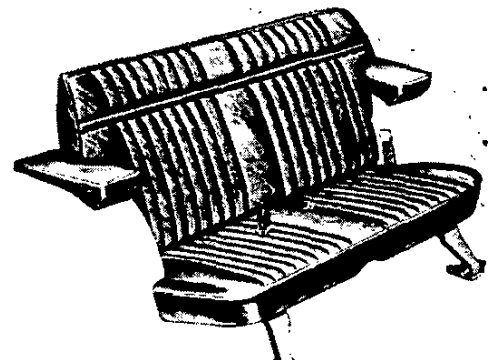
### INTERIOR

- **Wheel Opening Lip Moldings:** Black plastic
- **Bright Appearance Items:**  
"Sport/Gypsy" nameplate on stowage box door  
Trim on steering wheel
- **Seats:** High back, reclining buckets with choice of: 1) sport cloth trim or 2) High Country sheepskin trim (at extra cost); includes locking console between seats; lock operated by door key. See Interior and Exterior Color Selection Chart for color and trim availability
- **Steering Wheel:** Color-keyed sport type with bright shroud



### STANDARD FRONT BUCKET SEATS

Consists of two high back bucket-type seats with foam padding and folding backrests with inertia latches. RH seat includes easy entry feature. A lockable color-keyed plastic center console with spacious stowage compartment is available. This console is included when the Sport/Gypsy Model Option is ordered.

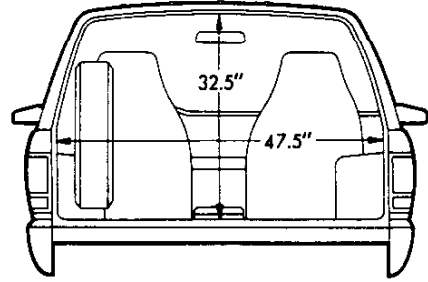
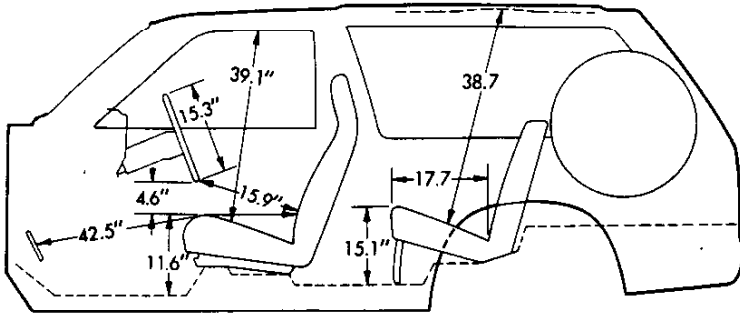


### REAR FOLDING SEAT

This two-passenger seat is available on all models, and seat trim matches front seats. The seat cushion pivots forward and down and the seat back folds on to it to provide a flat floor over the entire load area. Armrests are included and attached to wheel housings. A zipper pocket is also included in armrests when Tahoe/Sierra Classic or Sport/Gypsy trim is ordered. Two seat belts included.

## S-10/15 BLAZER/JIMMY 2- & 4-WHEEL DRIVE

### DIMENSIONS\*

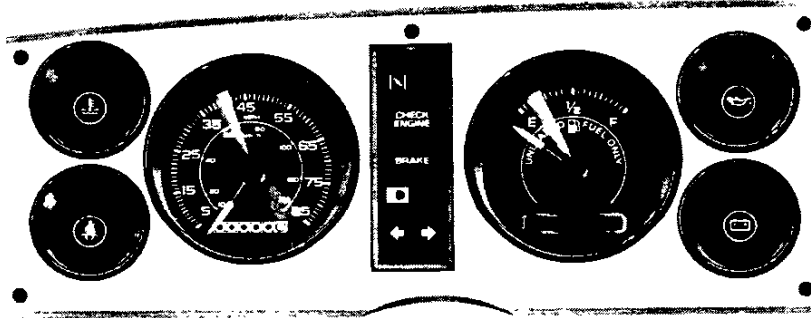


#### Glass Area (sq in)

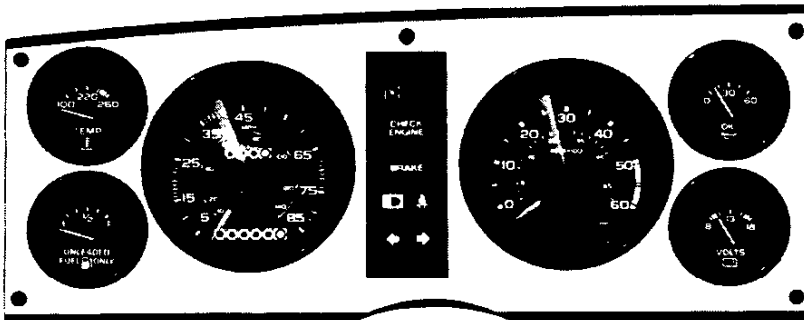
Windshield .....	1138.5	Rear side windows (each side) .....	752.0
Front side door window (each side) .....	409.5	Rear window .....	757.0

*\*All interior dimensions measured with front seat in rearmost position. Seat travel is 5"*

### INSTRUMENT CLUSTER



**Standard Cluster** with warning lights for engine temperature, generator, and oil pressure.



Optional tachometer also shown in illustration.

**Optional Cluster (RPO Z53)** with voltmeter, engine temperature gage, oil pressure gage and trip odometer. Included with tachometer (RPO U16) and in Tahoe/Sierra Classic model options (RPO YC2) and Sport/Gypsy model options (RPO YC3) along with bright brush-finished trim, as illustrated. Cluster faceplate for standard models has argent finish. When the optional tachometer is ordered, it replaces the regular fuel gage, and another fuel gage is added.



# S-10/15 BLAZER/JIMMY 2- & 4-WHEEL DRIVE

## INTERIOR AND EXTERIOR COLOR AVAILABILITY CHART

**Please Note:** Exterior and interior paint combinations shown in chart below are those recommended by Chevrolet/GMC. Any exterior color combination may be ordered with any available seat trim if the particular combination is desired by a customer. For special paint applications please contact the Zone Office.

INTERIOR COLORS		Decor	Almond	Blue	Carmine	Charcoal						
<b>STANDARD INTERIOR</b>		Std.	XAA4	XDD4	XRR4	XJJ4						
Custom Vinyl High Back Bucket Seats												
<b>TAHOE/SIERRA CLASSIC</b>		YC2	XAA4	XDD4	XRR4	XJJ4						
Custom Vinyl High Back Bucket Seats												
Special Custom Cloth High Back Bucket Seats			LAA4	LDD4	LRR4	LJJ4						
High Country Sheepskin High Back Bucket Seats*			BAA4									
<b>SPORT/GYPSY (Reqs. ZY7 Paint)</b>		YC3	SAA4			SJJ4						
Sport Cloth High Back Bucket Seats												
High Country Sheepskin High Back Bucket Seats*			BAA4									
							<b>ZY1 PAINT OPTIONAL STRIPING CHART</b>					
							<b>RECOMMENDED COMBINATIONS</b>					
							Additional stripe combinations are available except where N/A is shown, provided the dealer orders (D6Q) as verification (N/A B84, YC2 or YC3)					
EXTERIOR COLORS w/ZY1, ZY7 or ZY8 PAINT		Primary	Secondary	RECOMMENDED INTERIOR TRIM COLORS			Almond 65A	Black 09A	Blue, Dark 29A	Red 72A	Silver 17A	White 12A
<b>ALMOND</b>		59	59	X			X					
<b>ALMOND</b>		59	59			X		X				
Black, Satin (N/A ZY8)		59	09	X								
Gold, Nugget (Metallic)		59	65	X								
White, Frost		59	12	X								
<b>BLACK, MIDNIGHT</b>		19	19	X			X					
<b>BLACK, MIDNIGHT</b>		19	19			X			X			
<b>BLACK, MIDNIGHT</b>		19	19			X				X		
Black, Satin (N/A ZY8)		19	09	X		X						
Gold, Nugget (Metallic)		19	65	X		X						
Red, Apple		19	72			X						
Silver (Metallic)		19	17			X						
White, Frost		19	12			X						
<b>BLUE, LIGHT (Metallic)</b>		21	21		X		X		X			
Black, Satin (N/A ZY8)		21	09		X		X					
Blue, Midnight		21	29		X		X					
White, Frost		21	12		X							
<b>BLUE, MIDNIGHT</b>		29	29	X			X		N/A			
<b>BLUE, MIDNIGHT</b>		29	29		X		X		N/A		X	
Black, Satin (N/A ZY8)		29	09		X		X					
Gold, Nugget (Metallic)		29	65	X	X							
Silver (Metallic)		29	17		X							
White, Frost		29	12		X							
<b>GOLD, NUGGET (Metallic)</b>		65	65	X			X	N/A	X			
Black, Satin (N/A ZY8)		65	09	X			X					
White, Frost		65	12	X								
<b>RED, APPLE</b>		72	72			X	X			N/A		
Black, Satin (N/A ZY8)		72	09			X	X					
Silver (Metallic)		72	17			X	X					
White, Frost		72	12			X						
<b>RED, CINNAMON</b>		71	71	X			X			N/A		
<b>RED, CINNAMON</b>		71	71				X		X	N/A		
Black, Satin (N/A ZY8)		71	09	X			X					
Silver (Metallic)		71	17	X			X					
White, Frost		71	12	X			X					
<b>SILVER (Metallic)</b>		17	17		X				X		N/A	
<b>SILVER (Metallic)</b>		17	17		X				X		N/A	
<b>SILVER (Metallic)</b>		17	17		X		X				N/A	
Black, Satin (N/A ZY8)		17	09		X		X					
Blue, Midnight		17	29		X							
Red, Apple		17	72		X							
White, Frost		17	12		X		X					
<b>WHITE, FROST</b>		12	12	X			X					N/A
<b>WHITE, FROST</b>		12	12		X			X				N/A
<b>WHITE, FROST</b>		12	12		X		X		X			N/A
<b>WHITE, FROST</b>		12	12		X		X					N/A
Black, Satin (N/A ZY8)		12	09				X					
Blue, Midnight		12	29		X							
Gold, Nugget (Metallic)		12	65	X								
Red, Apple		12	72		X							
Silver (Metallic)		12	17		X		X					
<b>YELLOW, SUNSHINE</b>		51	51	X			X					
<b>YELLOW, SUNSHINE</b>		51	51				X		X			
Black, Satin (N/A ZY8)		51	09				X					
White, Frost		51	12				X					

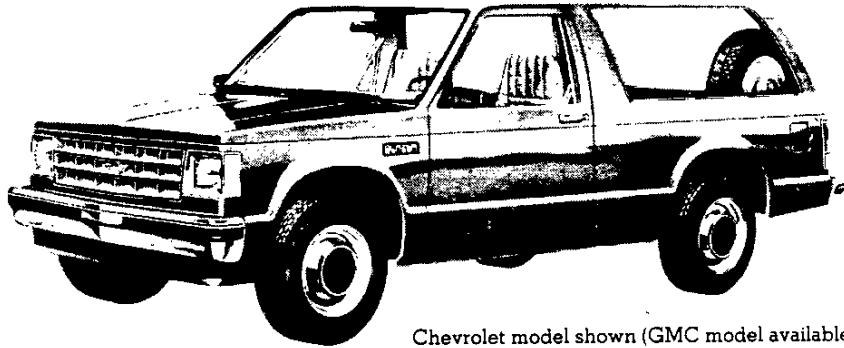
\*With YC2 Tahoe/Sierra Classic, rear seat trim is Special Custom Cloth; with YC3 Sport/Gypsy, rear seat trim is Sport Cloth.

## S-10/15 BLAZER/JIMMY 2- & 4-WHEEL DRIVE

### SOLID AND TWO-TONE\* EXTERIOR COLOR COMBINATIONS

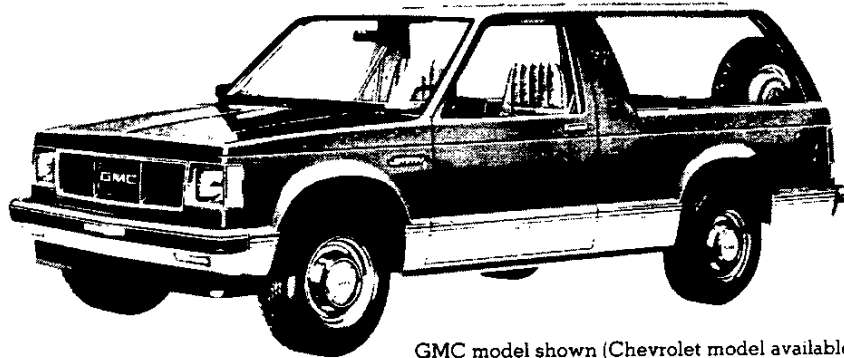
The application of paint for solid and two-tone exterior color combinations is shown below.

**Solid paint (ZY1)** is standard on all models (except Sport/Gypsy). All painted areas of the body and front end sheet metal are the same color. Tailgate lettering for base models is silver when Midnight Blue, Midnight Black, or Apple Red exterior colors are specified and black for all other exterior colors.



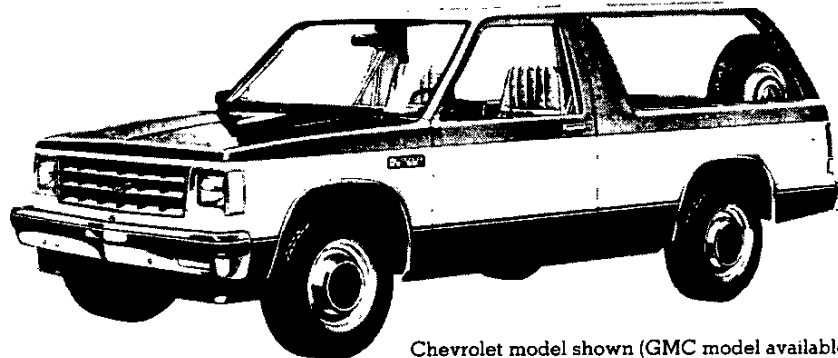
Chevrolet model shown (GMC model available)

**Sport two-tone paint (ZY7)**, which provides a lower accent two-tone scheme, is available on base and Tahoe/Sierra Classic models, and is included when the Sport/Gypsy Model Option (YC3) is ordered. A wide, four stripe decal is included on base models, and is applied below the lower styling crease lines. The decal color matches the secondary paint choice, and is applied over the paint break line in such a way that the primary color paint shows through the clear areas to contrast with the decal colors. The primary color choice is applied to the areas above the bottom stripe of the decal, and the secondary color is applied to the areas below the decal. RPO B84 Body Side Moldings may be ordered with ZY7 on base models, if desired (at extra cost), and will replace the striping decal. Tailgate lettering for base models is silver when Midnight Blue, Midnight Black, or Apple Red exterior colors are specified and black for all other exterior colors.



GMC model shown (Chevrolet model available)

**Special two-tone paint (ZY8)**, which provides a mid-accent two-tone scheme, is available on base and Tahoe/Sierra Classic models and includes B84 body side and wheel opening moldings (except on Tahoe/Sierra Classic models where already included) which are applied below the lower styling crease lines. The areas below the molding and above the belt styling crease line are painted the primary paint color. The areas between the molding and the belt styling crease line are painted the secondary color. Tailgate lettering for base models is silver when Midnight Blue, or Apple Red secondary exterior colors are specified and black for all other exterior colors.



Chevrolet model shown (GMC model available)

\*Optional at extra cost