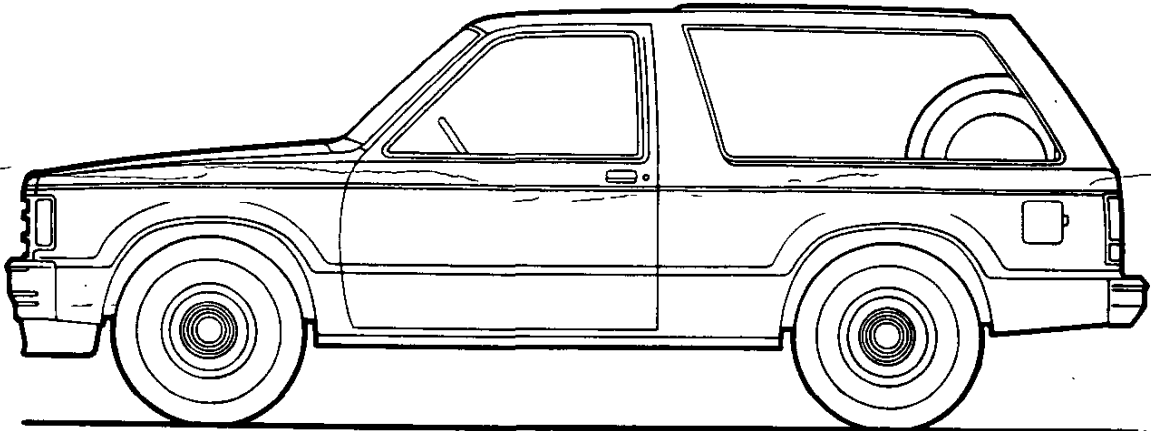


S-10/15 BLAZER/JIMMY 2- & 4-WHEEL DRIVE

MODEL SELECTOR



SERIES	MODEL NUMBER	BODY ORDERING CODE
S-10/S-15 (4x2)	S10516	E55
S-10/S-15 (4x4)	T10516	E55

S-10/15 BLAZER/JIMMY 2- & 4-WHEEL DRIVE

STANDARD SPECIFICATIONS

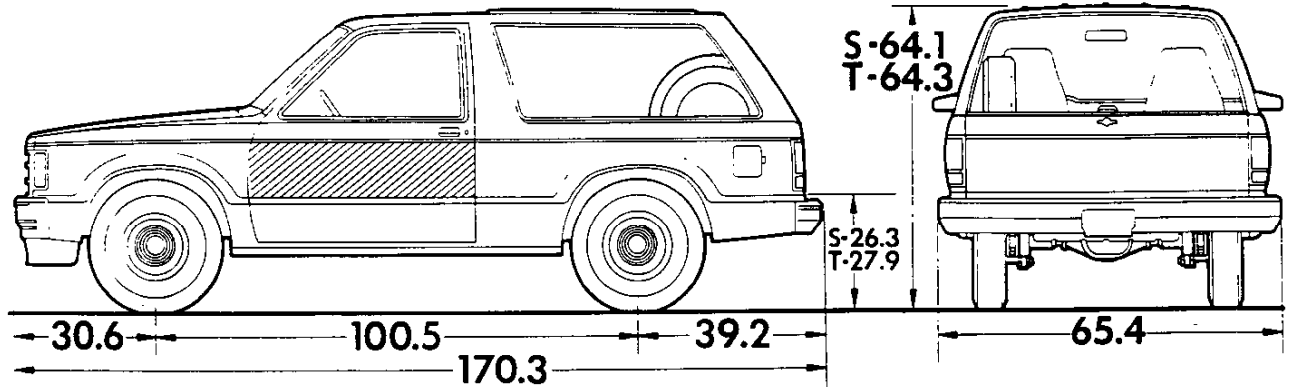
(See Gray Tab Section for Specification Details)

Series	S-10/15 4x2	S-10/15 4x4
Engine		
Base Equip.	2.5 L (151 Cu. In.) EFI L4	2.8 L (173 Cu. In.) EFI V6
Clutch	9.13; 71.86 sq. in.	
Air Filter	Oiled-paper Element	
Oil Filter	Throwaway Type	
Exhaust System	Single Aluminized	
Emission Control Systems	Meets Government Requirements	
Suspension, Front		
Type	Independent	Independent Driving Axle
Axle Capacity	Coil Springs	Torsion Bar
Axle Ratio	2200 lb.	2400 lb.
Springs @ Ground	—	3.73
Shock Absorbers (Low-pressure Gas)	1100 lb. ea.	1200 lb. ea.
Stabilizer Bar	25mm dia.	25mm dia.
	29mm dia.	32mm dia.
Suspension, Rear	Salisbury Axle; Hypoid Drive; Two-stage Multi-leaf Springs	
Type	Leaf Springs	
Axle Capacity	2700 lb.	
Axle Ratio	3.73	
Springs, Main @ Ground	1350 lb. ea.	
Shock Absorbers (Low-pressure Gas)	25mm dia.	
Brakes	Hydraulic; Self-adjusting	
Front	Disc; 10.51" Rotor	
Rear	Drum; 9.49" x 2"	
Booster	Dual Diaphragm	
Parking	Cable to Rear Wheels	
Electrical	12 Volt; Negative Ground	
Battery — Freedom Type	525 CCA ♦ @ 0°F.	
— Reserve Capacity	75 min. @ 80°F.	
Delcotron Generator	85 amp.	
Frame	Carbon Steel; 36,39,000 psi	
Section Modulus	1.78	
Fuel Tank (nominal capacity)	20 gal.	
Steering Gear Type	Manual; Recirculating Ball Gear	Integral Power
Linkage	Parallelogram	
Transmission	5-Speed Manual w/overdrive	
Shift Location	Floor	
Transfer Case	—	New Process 207 2-Speed
Shift Lever	—	Single Lever
Tires	(4) P195/75R15 All Seasons Steel Belted Radial	
Spare	(1) T155/90D16	
Wheels	(4) Disc, 15" x 6"	
Spare	(1) Disc, 16" x 4"	

♦CCA-Cold Cranking Amps

S-10/15 BLAZER/JIMMY 2- & 4-WHEEL DRIVE

Body Ordering Code: E55



Sign Panel Area (side)
12 3/4" x 45"



Capacity (Cu. Ft.)
Std - 67.3
w/rear seat - 28.1

Model	Body Ordering Code	Engine No. Cyl.	Curb Weight (lb)			Model Weights (lb)*			Ground Clearance (in)★
			Front	Rear	Total	Front	Rear	Total	Minimum
S10516	E55	4	1443	1467	2910	1582	1628	3210	7.4
T10516	E55	6	1726	1535	3261	1865	1696	3561	6.6

★ Dimensions with standard equipment, unloaded.

*Model Weights include curb weight plus occupants (standard seating capacity x 150 lbs.). Total Weight may vary as much as ±50 lbs. to allow for production build variation.

PAYLOAD SELECTOR

‡Maximum Ratings				Minimum Equipment Required for GVW Rating		
Payload (lb)	GVW Range (lb)	†GAWR (lb)		Tires, Front	Tires, Rear	Chassis Equipment
		Front	Rear			
S-10/S-15 MODELS (2-WHEEL DRIVE)						
1000	3961 to 4632	2200	2600	P195/75R15	P195/75R15	Standard
S-10/S-15 MODELS (4-WHEEL DRIVE)						
1000	4310 to 5013	2400	2684	P195/75R15	P195/75R15	Standard

‡GAWRs shown are the maximum for each axle with the equipment listed. Maximum ratings include an additional 50 lbs. allowance for vehicle weight variance.

†GAWR—Gross Axle Weight Rating.

S-10/15 BLAZER/JIMMY 2- & 4-WHEEL DRIVE

POWER TEAMS

Note: All payloads for S Blazer/Jimmy are 1000 lbs

ALL STATES

POWER TEAMS (MUST ORDER ENGINE, TRANSMISSION AND REAR AXLE)

ENGINE	TRANSMISSION		AXLE			
	5-SP	AUTO	3.08	3.42	3.73	4.11
W/NA5 STANDARD EMISSION EQUIPMENT						
—S10516						
LN8 L4 2.5 Liter EFI	MM5	MXO	—	—	GQ1	H04
				—	—	—
LL2 V6 2.8 Liter EFI (Reqs N40 Steering)	MM5	MXO	—	GQ1	GT4	—
LB4 V6 4.3 Liter EFI (Reqs N40 Steering)	—	MXO	GQ1	GU6	—	—
—T10516						
LL2 V6 2.8 Liter EFI	MM5		—	—	*GQ1	H04
		MXO	—	*GQ1	GT4	\$H04
LB4 V6 4.3 Liter EFI		MXO	*GQ1	GU6	—	—
W/NA6 HIGH ALTITUDE EMISSION EQUIPMENT						
—S10516						
LN8 L4 2.5 Liter EFI	MM5	MXO	—	—	—	GQ1
LL2 V6 2.8 Liter EFI (Reqs N40 Steering)	MM5		—	—	—	GQ1
		MXO	—	—	GQ1	—
LB4 V6 4.3 Liter EFI (Reqs N40 Steering)		MXO	GQ1	GU6	—	—
—T10516						
LL2 V6 2.8 Liter EFI	MM5	MXO	—	—	*GQ1	H04
LB4 V6 4.3 Liter EFI		MXO	—	GQ1	—	—
W/YF5 CALIFORNIA EMISSION REQUIREMENTS						
—S10516						
LN8 L4 2.5 Liter EFI	MM5	MXO	—	—	GQ1	H04
				—	—	—
LL2 V6 2.8 Liter EFI (Reqs N40 Steering)	MM5	MXO	—	GQ1	GT4	—
				—	—	GQ1
LB4 V6 4.3 Liter EFI (Reqs N40 Steering)		MXO	GQ1	GU6	—	—
—T10516						
LL2 V6 2.8 Liter EFI	MM5		—	—	*GQ1	H04
		MXO	—	*GQ1	GT4	\$H04
LB4 V6 4.3 Liter EFI		MXO	*GQ1	GU6	—	—

*N/A P235/75R15 Tires
\$Reqs P235/75R15 Tires

ENGINE RATINGS— ALL STATES

SAE Net Ratings	2.5 Liter 151 EFI L4	2.8 Liter 173 EFI V6	4.3 Liter 262 EFI V6
Net Horsepower	92 @ 4400 rpm	125 @ 4800 rpm	160 @ 4000 rpm
Net Torque, lb-ft	130 @ 3200 rpm	150 @ 2400 rpm	230 @ 2800 rpm

S10 2 AND 4 WHEEL DRIVE BLAZER (1000-lb Payload)

1988 VEHICLES WITH STANDARD EQUIPMENT

prices shown are effective with vehicles produced on and after January 2, 1988

Description	Model Number	Body Code	Wheel Base	Factory D&H(a)	List Price	Mfr's Suggested Retail Price★	Group Number
◆ 4-Cylinder 2.5 Liter E.F.I. L4 Engine-Engine Ordering Code LN8							
S10 Series 2-Wheel Drive							
Tailgate	CS10516	E55	100.5"	N.A.	10505.00	10505.00	15
◆ 6-Cylinder 2.8 Liter E.F.I. V6 Engine-Engine Ordering Code LL2							
S10 Series 4-Wheel Drive							
Tailgate	CT10516	E55	100.5"	N.A.	12590.00	12590.00	15

★ Manufacturer's Suggested Retail Prices do not include applicable destination charges, state and local taxes, license fees, optional equipment or special items or services.

◆ Refer to Dealer Order Guide for California Requirements.

OPTIONS WHEN INSTALLED BY GENERAL MOTORS

prices shown are effective with vehicles produced on and after January 2, 1988

Description	Option Number	Factory D&H(a)	List Price	Mfr's Suggested Retail Price◇
Tahoe/Sierra Classic Equipment: (See Interior and Exterior Color Selection Charts) Includes color-keyed door handle inserts, B84 Body Side and Bright Wheel Opening Moldings, black quarter window moldings, special tailgate applique, nameplate on instrument panel, special door trim with coin holder in LH door panel, deluxe armrests and map pockets, special color-keyed carpeting, D34 Visor Mirror, DC4 Rear View Mirror, special body insulation and Z53 Gage Package with Trip Odometer. Also includes P17 Spare Tire Cover when P16 Spare Tire and Wheel Carrier is not specified				
Without YH9. Includes P06 Trim Rings	YC2	N.A.	683.00	683.00
With YH9. T1 Series only	YC2	N.A.	473.00	473.00
Sport/Gypsy Equipment: (See Interior and Exterior Color Selection Charts) Available only when ZY7 Sport or ZY6 Custom Two-Tone Paint and Sport Cloth or Leather Trim is specified. Includes A78 Reclining Seat Backs, D55 Console, VE6 Color-Keyed Front and Rear Bumpers, black door handle inserts, B84 Body Side and Black Wheel Opening Moldings, black quarter window moldings, special tailgate applique, nameplate on instrument panel, special door trim with coin holder in LH door panel, deluxe armrests and map pockets, color-keyed carpeting, D34 Visor Mirror, DC4 Rear View Mirror, special body insulation and Z53 Gage Package with Trip Odometer. Also includes P17 Spare Tire Cover when P16 Spare Tire and Wheel Carrier is not specified				
S10516 only. Includes ZJ7 Rally Wheels	YC3	N.A.	1068.00	1068.00
T10516 only.				
Without YH9. Includes P06 Trim Rings	YC3	N.A.	1038.00	1038.00
With YH9	YC3	N.A.	671.00	671.00

(a) D & H Charges on vehicle and optional equipment include reimbursement to ordering Division for any tax that it has paid, incurred or agreed to pay thereon.

◇ State and local taxes not included.

S-10/15 BLAZER/JIMMY 2- & 4-WHEEL DRIVE

POWER TEAMS

Note: All payloads for S Blazer/Jimmy are 1000 lbs

ALL STATES

POWER TEAMS (MUST ORDER ENGINE, TRANSMISSION AND REAR AXLE)

ENGINE	TRANSMISSION		AXLE			
	5-SP	AUTO	3.08	3.42	3.73	4.11
W/NA5 STANDARD EMISSION EQUIPMENT						
—S10516						
LN8 L4 2.5 Liter EFI	MM5	MXO	—	—	GQ1	H04
				—	—	—
LL2 V6 2.8 Liter EFI (Reqs N40 Steering)	MM5	MXO	—	GQ1	GT4	—
				GQ1	GU6	—
LB4 V6 4.3 Liter EFI (Reqs N40 Steering)		MXO	GQ1	GU6	—	—
—T10516						
LL2 V6 2.8 Liter EFI	MM5		—	—	*GQ1	H04
			MXO	—	*GQ1	GT4
LB4 V6 4.3 Liter EFI		MXO	*GQ1	GU6	—	—
W/NA6 HIGH ALTITUDE EMISSION EQUIPMENT						
—S10516						
LN8 L4 2.5 Liter EFI	MM5	MXO	—	—	—	GQ1
				—	—	—
LL2 V6 2.8 Liter EFI (Reqs N40 Steering)	MM5		—	—	—	GQ1
			MXO	—	—	GQ1
LB4 V6 4.3 Liter EFI (Reqs N40 Steering)		MXO	GQ1	GU6	—	—
—T10516						
LL2 V6 2.8 Liter EFI	MM5	MXO	—	—	*GQ1	H04
				—	GQ1	—
LB4 V6 4.3 Liter EFI		MXO	—	GQ1	—	—
W/YF5 CALIFORNIA EMISSION REQUIREMENTS						
—S10516						
LN8 L4 2.5 Liter EFI	MM5	MXO	—	—	GQ1	H04
				—	—	—
LL2 V6 2.8 Liter EFI (Reqs N40 Steering)	MM5	MXO	—	GQ1	GT4	—
				—	—	GQ1
LB4 V6 4.3 Liter EFI (Reqs N40 Steering)		MXO	GQ1	GU6	—	—
—T10516						
LL2 V6 2.8 Liter EFI	MM5		—	—	*GQ1	H04
			MXO	—	*GQ1	GT4
LB4 V6 4.3 Liter EFI		MXO	*GQ1	GU6	—	—

*N/A P235/75R15 Tires
§Reqs P235/75R15 Tires

ENGINE RATINGS— ALL STATES

SAE Net Ratings	2.5 Liter 151 EFI L4	2.8 Liter 173 EFI V6	4.3 Liter 262 EFI V6
Net Horsepower	92 @ 4400 rpm	125 @ 4800 rpm	160 @ 4000 rpm
Net Torque, lb-ft	130 @ 3200 rpm	150 @ 2400 rpm	230 @ 2800 rpm

S10/15 2 AND 4 WHEEL DRIVE BLAZER/JIMMY

OPTIONS WHEN INSTALLED BY GENERAL MOTORS

prices shown are effective with vehicles produced on and after January 2, 1988

Description	Option Number	Factory D&H(a)	List Price	Mfr's Suggested Retail Price ◇
Tires: Includes Compact Spare Tire				
<i>All wheel size, Front and Rear are 6.00" except when QEB Tires or N90 Wheels are specified, then wheel size is 7.00".</i>				
TUBELESS				
<i>P195/75R15 All Seasons Steel Belted Radial Ply Blackwall. (Standard) (Maximum Capacity 1342-lbs)</i>	QAR		NO ADDITIONAL CHARGE	
<i>P195/75R15 All Seasons Steel Belted Radial Ply Whitewall. (Maximum Capacity 1342-lbs)</i>	QAS	N.C.	68.00	68.00
<i>P205/75R15 All Seasons Steel Belted Radial Ply Blackwall (Maximum Capacity 1453-lbs)</i>	QCE	N.C.	33.00	33.00
<i>P205/75R15 On-Off Road Steel Belted Radial Ply White Lettered (Maximum Capacity 1453-lbs)</i>	QJL	N.C.	167.00	167.00
<i>P205/75R15 All Seasons Steel Belted Radial Ply White Lettered (Maximum Capacity 1453-lbs)</i>	QCF	N.C.	129.00	129.00
<i>P205/75R15 On-Off Road Steel Belted Radial Ply Blackwall (Maximum Capacity 1453-lbs)</i>	QJT	N.C.	71.00	71.00
<i>P235/75R15 On-Off Road Steel Belted Radial Ply White Lettered (Maximum Capacity 1453-lbs). T1 Series only. Available only when ZK5 Full Size Spare Tire is specified. Included when Z71 Chassis Equipment Package is specified</i>	QEB	N.C.	311.00	311.00
<i>P205/75R15 On-Off Road Steel Belted Radial Ply Blackwall (Front Highway, Rear On-Off Road) (Maximum Capacity 1453-lbs). S1 Series only</i>	Q1C	N.C.	51.00	51.00

OTHER OPTIONS

Air Cleaner, Pre-Cleaner: Available only when LL2 2.8 Liter Engine is specified	K46	N.A.	44.00	44.00
Air Conditioning: All-Weather. Available only when N40 Power Steering is specified. Includes V01 H.D. Radiator when V02 H.D. Radiator and Transmission Oil Cooler is not specified.	C60	N.A.	745.00	745.00
Battery: Heavy-Duty. 630 Cold Cranking Amps, Delco Freedom. Included when V10 Cold-Climate Package is specified	UA1	N.A.	58.00	58.00
Bumper Equipment:				
<i>Bumpers, Painted.</i> Color-Keyed with rub strips. Front and Rear. Available only when ZY6 Custom, ZY7 Sport or ZY8 Special Two-Tone Paint is specified. Included when YC3 or YH9 High Country Package is specified	VE6		NO ADDITIONAL CHARGE	
<i>Bumper Guards, Front, Black</i>	V28	N.A.	32.00	32.00
Carriers, Luggage:				
Bright. Not available when YC3 or YH9 High Country Package is specified	V55	N.A.	126.00	126.00
Black	V54	N.A.	126.00	126.00
Carrier:				
<i>Spare Wheel and Tire:</i> Not available when P17 Spare Tire Cover is specified. Available only when full size spare tire is specified. Includes exterior cover				
Without YC2 or YC3	P16	N.A.	192.00	192.00
With YC2 or YC3	P16	N.A.	159.00	159.00
<i>Outside Spare Tire Carrier not desired.</i> Retains inside tire mounting	PNV		NO ADDITIONAL CHARGE	
Chassis Equipment: Off-Road Package. T10516 only. Not available when F51 H.D. Shock Absorbers are specified. Includes QEB P235/75R15 tires, ZK5 Full Size Spare, special torsion bars, shock absorbers, jounce bumpers, front stabilizer, V78 Tow Hooks and NY7 Transfer Case Shield				
Without YC2 or YC3. Includes P08 Trim Rings	Z71	N.A.	693.00	693.00
With YC2 or YC3	Z71	N.A.	637.00	637.00

(a) D & H Charges on vehicle and optional equipment include reimbursement to ordering Division for any tax that it has paid, incurred or agreed to pay thereon.

◇ State and local taxes not included.

S10/15 2 AND 4 WHEEL DRIVE BLAZER/JIMMY

OPTIONS WHEN INSTALLED BY GENERAL MOTORS

prices shown are effective with vehicles produced on and after January 2, 1988

Description	Option Number	Factory D&H(a)	List Price	Mfr's Suggested Retail Price◇
Seat Trim: (See Interior and Exterior Color Selection Chart for availability and ordering information).				
X**4 Custom Vinyl High Back Buckets. Driver and Passenger. Not available when YC3 is specified	...			NO ADDITIONAL CHARGE
H**4 Special Custom Cloth High Back Buckets. Available only when YC2 is specified	...			NO ADDITIONAL CHARGE
D**4 Deluxe Cloth High Back Buckets. Driver and Passenger. Available only when YC3 is specified.				
Without AM7 Rear Seat	...			NO ADDITIONAL CHARGE
With AM7 Rear Seat	...	N.A.	26.00	26.00
A**6 Leather High-Back Reclining Buckets. Available only when YC2 or YC3 is specified.				
With YC2				
Without AM7 Rear Seat	...	N.A.	386.00	386.00
With AM7 Rear Seat	...	N.A.	486.00	486.00
With YC3				
Without AM7 Rear Seat	...	N.A.	312.00	312.00
With AM7 Rear Seat	...	N.A.	412.00	412.00
Paints, Exterior: (See Interior and Exterior Color Selection Chart for ordering information and paint application).				
Solid	ZY1			NO ADDITIONAL CHARGE
Custom Two-Tone. Includes dual-tone body striping				
Without YC3				
Without D90 Sunshine Striping	ZY6	N.A.	212.00	212.00
With D90 Sunshine Striping	ZY6	N.A.	163.00	163.00
With YC3	ZY6			NO ADDITIONAL CHARGE
Special Two-Tone. Middle area painted Color Code Two choice.				
Without YC2. Includes B84 Body Side and Bright Wheel Opening Moldings	ZY8	N.A.	329.00	329.00
With YC2	ZY8	N.A.	177.00	177.00
Sport Two-Tone. Included when YC3 is specified.				
Without YC2. Includes striping that matches Color Code Two paint color except when YC3 is specified. Area below striping painted Color Code Two choice	ZY7	N.A.	240.00	240.00
With YC2. Area below B84 Body Side and Bright Wheel Opening Moldings painted Color Code Two choice	ZY7	N.A.	172.00	172.00
Emission Systems: Dealer Note - One of the following emission options must be specified. (See Power Teams Chart for Engine and Transmission Availability).				
California Emission Requirements. Includes all testing, equipment and /or certification necessary for registration in the state of California. Not Available when NA5 Standard or NA6 High Altitude Emissions are specified	YF5 NA6			NO ADDITIONAL CHARGE NO ADDITIONAL CHARGE
High Altitude Emission Equipment	NA5			NO ADDITIONAL CHARGE
Standard Emission Equipment. Not available when YF5 California or NA6 High Altitude Emissions are specified	NA5			NO ADDITIONAL CHARGE
Engines: (See Power Teams Chart for availability and complete specifications)				
Gasoline				
2.5 Liter E.F.I. L4. Standard on S1 Series	LN8			NO ADDITIONAL CHARGE
2.8 Liter E.F.I. V6. Standard on T1 series. Available only when N40 Power Steering is specified on S1 series	LL2	N.A.	295.00	295.00
4.3 Liter E.F.I. V6. Available only when MX0 Automatic Transmission and N40 Power Steering are specified				
S1 Series only	LB4	N.A.	450.00	450.00
T1 Series only	LB4	N.A.	155.00	155.00
Transmissions: (See Power Teams Chart for availability and complete specifications).				
4-Speed Automatic with Overdrive	MX0	N.A.	735.00	735.00
5-Speed Manual with Overdrive. Standard	MM5			NO ADDITIONAL CHARGE
Axles, Rear: (See Power Teams Chart for option number selection, availability and complete specifications)				
Optional Ratio		N.A.	38.00	38.00
Locking Differential	G80	N.A.	252.00	252.00

(a) D & H Charges on vehicle and optional equipment include reimbursement to ordering Division for any tax that it has paid, incurred or agreed to pay thereon.
◇ State and local taxes not included.

S10/15 2 AND 4 WHEEL DRIVE BLAZER/JIMMY

OPTIONS WHEN INSTALLED BY GENERAL MOTORS

prices shown are effective with vehicles produced on and after January 2, 1988

Description	Option Number	Factory D&H(a)	List Price	Mfr's Suggested Retail Price ◇
OTHER OPTIONS				
Lamp, Engine Compartment	U26	N.A.	16.00	16.00
Mirrors:				
Exterior: LH and RH. Below-Eye-Line Type. 7.25" x 6".				
<i>Painted.</i> Included with YH9 High Country Package	D44	N.A.	52.00	52.00
<i>Bright.</i> Not available when YC3 is specified	D45	N.A.	87.00	87.00
Visor: RH. Included when YC2 or YC3 is specified	D34	N.A.	7.00	7.00
Rear View, Inside. Tilting with dual reading lamps Included with YC2 or YC3	DC4	N.A.	26.00	26.00
Moldings:				
Body Side and Wheel Opening. Included when YC2, YC3 or ZY8 Special Two-Tone Paint is specified. Includes lower side and rear moldings of black plastic with bright trim and wheel opening moldings.				
Without ZY7 Sport Two-Tone Paint	B84	N.A.	152.00	152.00
With ZY7 Sport Two-Tone Paint	B84	N.A.	83.00	83.00
Guards, Door Edge Not available when YH9 High Country Package is specified	B93	N.A.	18.00	18.00
Wheel Opening:				
Bright. Not available when YC3 is specified. Included when YC2 or ZY8 Special Two-Tone Paint is specified. Also included with B84 Body Side and Wheel Opening Moldings except when YC3 is specified	B96	N.A.	31.00	31.00
Black. Included when YC3 is specified. Not available when B96 Bright Wheel Opening Moldings are specified				
Without B84 Body Side and Wheel Opening Moldings	B74	N.A.	43.00	43.00
With B84 Body Side and Wheel Opening Moldings ..	B74	N.A.	13.00	13.00
Operating Convenience Package: Includes AU3 Power Door Locks and A31 Power Windows	ZQ2	N.A.	344.00	344.00
Preliminary Price Information	B3W	N.A.	N.A.	N.A.
Radio Equipment:				
AM/FM Stereo Radio. Electronically Tuned	UU9	N.A.	248.00	248.00
AM/FM Stereo Radio with Seek and Scan and Digital Clock. Electronically Tuned	UM7	N.A.	308.00	308.00
AM/FM Stereo Radio with Seek and Scan, Stereo Cassette Tape and Digital Clock. Electronically Tuned. Includes U66 Premium Dual Rear Speakers	UM6	N.A.	454.00	454.00
AM Stereo and FM Stereo Radio with Seek and Scan, Stereo Cassette Tape with Search and Repeat, Digital Clock and Graphic Equalizer. Electronically Tuned. Includes U66 Premium Dual Rear Speakers	UX1	N.A.	604.00	604.00
Speakers, Premium Dual Rear. Available only when UU9 or UM7 Radio is specified. Included with UM6 or UX1 Radio.	U66	N.A.	27.00	27.00
Seats: (Dealer Note— AM7 Rear Seat or YG4 Rear Seat Not Desired must be specified. Added weight reflects optional seat weight only. Refer to vehicle and option weight section of Data Book)				
Folding Rear Bench. Includes armrests	AM7	N.A.	359.00	359.00
Optional Seat Not Desired	YG4	NO ADDITIONAL CHARGE		
Seat Backs, Reclining. R.H. and L.H. Included when YC3 or YH9 High Country Package is specified	A78	N.A.	74.00	74.00
Shield, Transfer Case: T1 Series only. Included when Z71 Chassis Equipment is specified	NY7	N.A.	75.00	75.00
Shock Absorbers: Heavy-Duty, Front and Rear. Not available when Z71 Chassis Equipment is specified. Included when F60 H.D. Front Suspension is specified	F51	N.A.	36.00	36.00

(a) D & H Charges on vehicle and optional equipment include reimbursement to ordering Division for any tax that it has paid, incurred or agreed to pay thereon.
 ◇ State and local taxes not included.

S10/15 2 AND 4 WHEEL DRIVE BLAZER/JIMMY

OPTIONS WHEN INSTALLED BY GENERAL MOTORS

prices shown are effective with vehicles produced on and after January 2, 1988

Description	Option Number	Factory D&H(a)	List Price	Mfr's Suggested Retail Price [◇]
OTHER OPTIONS				
Cold-Climate Package: Includes UA1 H.D. Battery and special insulation.				
Without YC2 or YC3	V10	N.A.	156.00	156.00
With YC2 or YC3	V10	N.A.	113.00	113.00
Console: <i>Front Compartment Floor.</i> Included when YC3 or YH9 High Country Package is specified				
	D55	N.A.	114.00	114.00
Cooling System:				
<i>Engine Oil.</i> Available only when LL2 2.8 Liter Engine, MX0 Automatic Transmission and V01 H.D. Radiator or V02 H.D. Radiator and Transmission Oil Cooler are specified				
	KC4	N.A.	126.00	126.00
<i>Radiator, Heavy-Duty.</i> Not available when V02 H.D. Radiator and Transmission Oil Cooler is specified. Included when C60 Air Conditioning is specified				
	V01	N.A.	56.00	56.00
<i>Radiator and Transmission Oil, Heavy-Duty.</i> T1 Series available only when MX0 Automatic Transmission is specified. S1 Series available only when LL2 2.8 Liter Engine and MX0 Automatic Transmission are specified				
Without C60 Air Conditioning	V02	N.A.	118.00	118.00
With C60 Air Conditioning	V02	N.A.	63.00	63.00
Cover, Spare Tire: Included when YC2 or YC3 is specified. Not available when P16 Spare Wheel Tire Carrier is specified				
	P17	N.A.	33.00	33.00
Deflector, Air				
	C51	N.A.	43.00	43.00
Defogger, Rear Window: <i>Electric.</i>				
	C49	N.A.	154.00	154.00
Door Lock System, Power: <i>Side Doors only.</i> Included when ZQ2 Operating Convenience Package is specified				
	AU3	N.A.	144.00	144.00
Floor Covering:				
<i>Mats, Color-Keyed, Removable.</i> Not available when BG9 Full Floor Covering is specified. Available only when YC2 or YC3 is specified.				
Front	B32	N.A.	16.00	16.00
Rear	B33	N.A.	12.00	12.00
<i>Full Floor, Rubber, Color-Keyed.</i> Replaces carpeting when YC2 or YC3 is specified. Available only when YC2 or YC3 is specified				
	BG9	NO ADDITIONAL CHARGE		
Gages:				
<i>Voltmeter, Temperature, Oil Pressure and Trip Odometer.</i> Included when YC2, YC3 or U16 Tachometer is specified				
	Z53	N.A.	62.00	62.00
<i>Tachometer.</i>				
Without YC2 or YC3. Includes Z53 Gage Package	U16	N.A.	120.00	120.00
With YC2 or YC3	U16	N.A.	59.00	59.00
Glass:				
<i>Deep Tinted.</i> Includes dark laminated glass on rear quarters and rear window				
Without YH9	AJ1	N.A.	200.00	200.00
With YH9. T1 Series only	AJ1	N.A.	56.00	56.00
<i>Deep Tinted with Light Tinted Rear Window.</i> Not available when AJ1 Deep Tinted Glass is specified. Included with YH9 High Country Package. Includes dark laminated glass on rear quarter windows				
	AA3	N.A.	144.00	144.00
Headlamps, Halogen				
	TT4	N.A.	24.00	24.00
Heater, Engine Block: 600 watts, 120 volts.				
	K05	N.A.	33.00	33.00
High Country/Timberline Package: Not available when D90 Sunshine or D98 Rally Striping is specified. Available only when YC2, YC3, white lettered tires, ZY6 Custom Two-Tone Paint, Saddle Tan Custom Cloth or Saddle Tan Leather Trim is specified. Includes AA3 Deep Tinted Glass, Gold Painted Cast Aluminum Wheels, exterior black-out package, D44 Mirrors, special nameplates, stripe decal and VE6 Color-Keyed Bumpers				
With YC2. Also includes D55 Console and A78 Reclining Seat Backs	YH9	N.A.	1025.00	1025.00
With YC3	YH9	N.A.	925.00	925.00

(a) D & H Charges on vehicle and optional equipment include reimbursement to ordering Division for any tax that it has paid, incurred or agreed to pay thereon.
[◇] State and local taxes not included.

S10/15 2 AND 4 WHEEL DRIVE BLAZER/JIMMY

OPTIONS WHEN INSTALLED BY GENERAL MOTORS

prices shown are effective with vehicles produced on and after January 2, 1988

Description	Option Number	Factory D&H(a)	List Price	Mfr's Suggested Retail Price◇
OTHER OPTIONS				
Towing Device: Two Front Towing Hooks. T1 Series only. Included when Z71 Chassis Equipment is specified	V76	N.A.	38.00	38.00
Trailer Hitch: Dead Weight Type. 2,000-lb Capacity. Not available when Z82 Trailing Special is specified. Included when Z72 Trailing Special is specified	VR2	N.A.	68.00	68.00
Trailing Special: (See Trailing Guide for GCW ratings with available power train combinations.) <i>Heavy-Duty.</i> S1 Series available only when LL2 2.8 Liter Engine, N40 Power-Steering, VO2 H.D. Radiator and Transmission Oil Cooler, MX0 Automatic Transmission and 3.73 Rear Axle Ratio are specified. T1 Series available only when VO2 H.D. Radiator and Transmission Oil Cooler, MX0 Automatic Transmission and 3.73 or 4.11 Rear Axle Ratio are specified. Includes 7-lead wiring harness, weight distributing hitch platform and H.D. flasher	Z82	N.A.	211.00	211.00
<i>Light Duty.</i> Available only when V01 H.D. Cooling, V02 H.D. Radiator and Transmission Oil Cooler or C60 Air Conditioning and MX0 Automatic Transmission are specified. Includes 5-lead wiring harness and VR2 Dead Weight Trailer Hitch.	Z72	N.A.	109.00	109.00
Wheel Trim: Trim Rings. <i>S1 Series only.</i> Not available when ZJ7 Rally Wheels or YC3 is specified. Included with YC2	P06	N.A.	60.00	60.00
<i>T1 Series only.</i> Included when Z71 Chassis Equipment, YC2 or YC3 is specified	P08	N.A.	60.00	60.00
Wheels: <i>Rally.</i> Wheel size 15" x 6.5". S1 Series only. Painted argnt with P06 Trim Rings and special hub caps. Four wheels only. Included with YC3 Without YC2	ZJ7	N.A.	92.00	92.00
With YC2	ZJ7	N.A.	34.00	34.00
<i>Aluminum, Cast.</i> Wheel size 7". Four wheels only. T1 Series only. Not available when P195 Tires are specified. Without YC2, YC3 or Z71 Chassis Equipment	N90	N.A.	308.00	308.00
With YC2, YC3 or Z71 Chassis Equipment	N90	N.A.	252.00	252.00
Wheel, Spare: Available only when N90 Aluminum or ZJ7 Rally Wheels and ZK4 or ZK5 Spare Tire are specified T1 Series with N90 Aluminum Wheels	N79	N.A.	80.00	80.00
S1 Series with ZJ7 Rally Wheels	N79	N.A.	15.00	15.00
Windows: <i>Power, Side Doors.</i> Included when ZQ2 Operating Convenience Package is specified	A31	N.A.	200.00	200.00
Window, Sliding Side Quarter	AD5	N.A.	257.00	257.00
Wiper Systems: Windshield Intermittent	CD4	N.A.	59.00	59.00

(a) D & H Charges on vehicle and optional equipment include reimbursement to ordering Division for any tax that it has paid, incurred or agreed to pay thereon.
◇ State and local taxes not included.

S10/15 2 AND 4 WHEEL DRIVE BLAZER/JIMMY

OPTIONS WHEN INSTALLED BY GENERAL MOTORS

prices shown are effective with vehicles produced on and after January 2, 1988

Description	Option Number	Factory D&H(a)	List Price	Mfr's Suggested Retail Price◇
OTHER OPTIONS				
Spare Tire: (Available only when P16 Carrier or PNV Carrier not desired is specified). Full size. Included with Z71 Chassis Equipment. Replaces Standard Compact Spare				
Highway				
With QAR P195/75R15 All Seasons Steel Belted Radial Ply Blackwall	ZK4	N.C.	48.00	48.00
With QAS P195/75R15 All Season Steel Belted Radial Ply Whitewall	ZK4	N.C.	51.00	51.00
With QCE P205/75R15 All Seasons Steel Belted Radial Ply Blackwall	ZK4	N.C.	55.00	55.00
With QCF P205/75R15 All Seasons Steel Belted Radial Ply White Lettered	ZK4	N.C.	74.00	74.00
With Q1C P205/75R15 Highway (Front) On-Off Road (Rear) Steel Belted Radial Ply Blackwall. S1 Series only	ZK4	N.C.	55.00	55.00
On-Off Road				
With QJT P205/75R15 Steel Belted Radial Ply Blackwall On-Off Road Front and Rear Tire.	ZK5	N.C.	58.00	58.00
With QJL P205/75R15 On-Off Road Steel Belted Radial Ply White Lettered	ZK5	N.C.	76.00	76.00
With QEB P235/75R15 Steel Belted Radial Ply White Lettered On-Off Road Front and Rear Tires. Mounted flat in loadspace. T1 Series only. Included when Z71 Chassis Equipment is specified	ZK5	N.C.	96.00	96.00
With Q1C P205/75R15 Steel Belted Radial Ply Blackwall On-Off Road. S1 Series only	ZK5	N.C.	58.00	58.00
Speed Control, Electronic	K34	N.A.	205.00	205.00
Steering: (One of the following steering options must be specified.)				
Power. Standard on T1 series	N40	N.A.	275.00	275.00
Power. Not Desired. Not available when Z82 Trailing Special is specified	N51	NO ADDITIONAL CHARGE		
Steering Wheel: Comfortilt	N33	N.A.	121.00	121.00
Striping, Body: Available only when ZY1 Solid Paint and the following stripe color is specified. Not available when B84 Body Side and Wheel Opening Moldings, YC2 or YC3 is specified. Included when ZY7 Sport Two-Tone Paint is specified. (See Interior and Exterior Color Availability Charts for Ordering Information)				
	D85	N.A.	69.00	69.00
Stripe Color:				
Black	19A	NO ADDITIONAL CHARGE		
Blue, Dark	28A	NO ADDITIONAL CHARGE		
Gold	67A	NO ADDITIONAL CHARGE		
Gray, Medium, Metallic	90A	NO ADDITIONAL CHARGE		
Red	72A	NO ADDITIONAL CHARGE		
Silver	17A	NO ADDITIONAL CHARGE		
White	12A	NO ADDITIONAL CHARGE		
Rally Striping: Available only when ZY1 Paint and stripe color are specified. (See Interior and Exterior Color Availability Charts for Ordering Information)				
	D98	N.A.	84.00	84.00
Sunshine Striping: Available only when ZY1 Solid or ZY6 Custom Two-Tone Paint is specified. Includes 4 Decal stripes along full length of vehicle. (See Interior and Exterior Color Availability Charts for Ordering Information.) Available only when stripe color is specified				
	D90	N.A.	116.00	116.00
Sun Roof: Manual. Non-removable glass	AD3	N.A.	250.00	250.00
Suspension Equipment: Front. Heavy-Duty. T1 series only. Includes F51 H.D. front and rear shock absorbers. Recommended for snowplow type usage only				
	F60	N.A.	63.00	63.00
Tailgate Window Release: Power	AU6	N.A.	43.00	43.00

(a) D & H Charges on vehicle and optional equipment include reimbursement to ordering Division for any tax that it has paid, incurred or agreed to pay thereon.
◇ State and local taxes not included.

S-10/15 BLAZER/JIMMY 2- & 4-WHEEL DRIVE

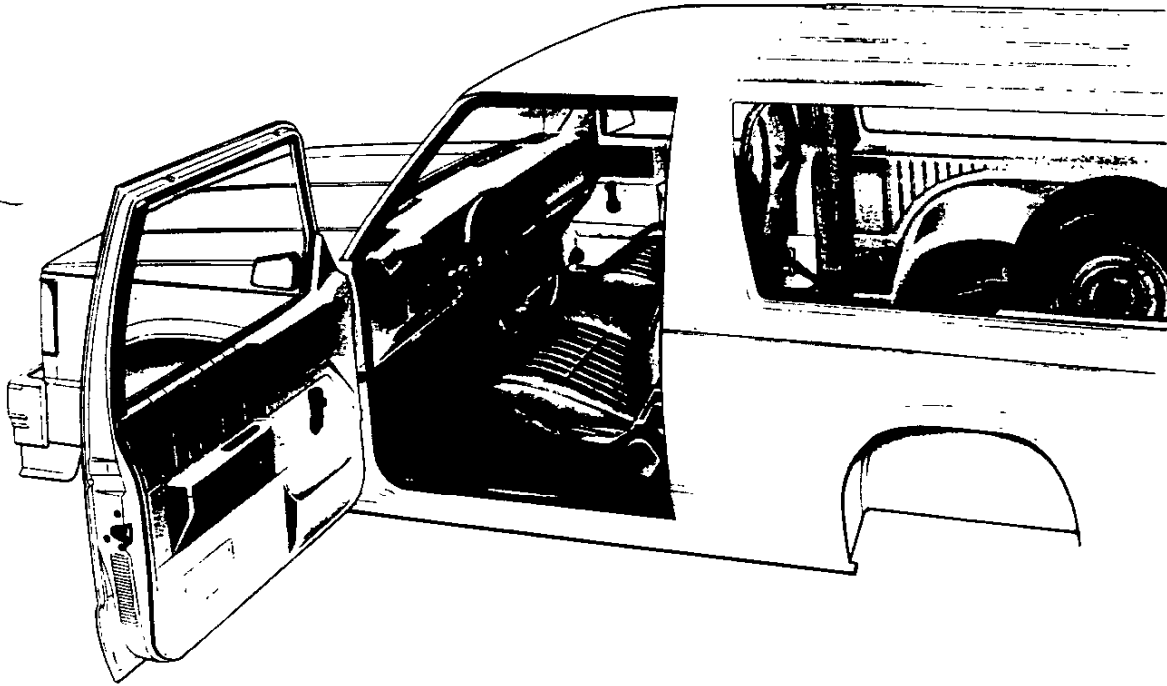
**CAB & BODY FEATURES
SEATING ARRANGEMENTS
CAB DIMENSIONS
COLOR & TRIM CHARTS
TWO-TONES**

NOTES

S-10/15 BLAZER/JIMMY 2- & 4-WHEEL DRIVE

STANDARD MODEL—FEATURES

The standard models include the following items as standard equipment



INTERIOR

- **Armrests:** RH and LH padded; integral with door trim panels
- **Ashtray:** In middle of instrument panel
- **Cigar Lighter:** With ashtray light
- **Coat Hook:** RH side
- **Colors:**
 - Painted areas: Same as exterior primary color choice
 - Interior trim: Coordinated with seat trim color choice
- **Dome Lamps:** Front and rear; with bright trim. Door-operated switches
- **Door Sill Plates:** Door-opening protection and floor mat retention; full-length; black plastic. Color-keyed plastic endgate scuff plate
- **Door Trim Panels:** Color-keyed, embossed molded plastic with integral armrests and map pockets; gray housing in doorlatch release handle area
- **Floor Covering:** Color-keyed rubber mat for entire floor area
- **Grab Handle:** Over RH door (4x4 models only)
- **Headliner:** Color-keyed; full coverage molded styrene full foam with color-keyed cloth cover
- **Headlamp Warning Buzzer**
- **Heater and Defogger:** Deluxe outside air type with power center and outboard instrument panel vents and side window defoggers
- **Hood Lock Release:** Handle located on LH side of instrument panel
- **Instrument Panel Trim:** Smooth low-gloss black finish for instrument cluster bezel, and textured charcoal finished central area. Low-gloss black light switch panel, knobs and heater/air conditioner control knobs. Gray accent RH/LH air conditioning outlet cover plates, heater control bezel and light switch bezel
- **Instruments:**
 - Gages: Speedometer, odometer and fuel
 - Switches: Main, for control of exterior lights, instrument cluster lights, and cab interior lights; combination steering column switch for direction signals by moving lever up and down, headlamp beams by moving lever fore and aft, and windshield wiper and washer by turning lever to wipe and pressing lever in to wash; hazard warning; heater fan; ignition with key-in warning buzzer
- **Warning lights:** Generator, oil pressure, engine temperature, seat belt, service-parking brake, direction/hazard signal, and high beam
- **Instrument Panel Control Knobs:** Soft black plastic (except heater and wiper-washer controls) with white graphic identification
- **Instrument Panel Pad:** Color-keyed, energy-absorbing foam type with injection molded plastic substrate
- **Insulation and Sound Deadening Material:** On dash (fire-wall), under floor mat, spray deadener inside of doors, plugs on windshield pillars, on roof underside, and on headliner
- **Lights:** Instrument cluster, door-operated courtesy and dome lamps, and glove box lamp
- **Mirror, Rearview:** 10" prismatic with soft vinyl rim
- **Pillar Trim Moldings:** Color-keyed molded plastic on windshield pillars
- **Seats:** Driver and passenger, foam padded high back bucket type with leather grained custom vinyl trim. RH seat includes easy entry feature. See Interior and Exterior Color Selection Chart for color and trim availability
- **Seat Belts:** Driver and passenger non-detachable combination lap and shoulder belts with emergency-locking retractors. Seat belts are color-keyed with pushbutton type buckles
- **Spare Tire Mounting:** On LH side panel behind wheelhousing. Note: P235 full-size spare tire and wheel (available at extra cost) is stored flat at rear of body on floor
- **Steering Wheel and Column:** 15 $\frac{1}{4}$ " deluxe color-keyed soft plastic wheel with 2 spokes; deluxe color-keyed energy-absorbing steering column with anti-theft locking feature
- **Stowage Box:** In RH side of instrument panel; with bright key-operated lock and "S-10/S-15 Sierra" nameplate; lock operated by door key
- **Sunshades:** RH and LH padded; color-keyed
- **Tools:** Mechanical jack and wheel wrench behind rear seat on RH side
- **Tray:** Small package tray on lower right half of instrument panel

S-10/15 BLAZER/JIMMY 2- & 4-WHEEL DRIVE

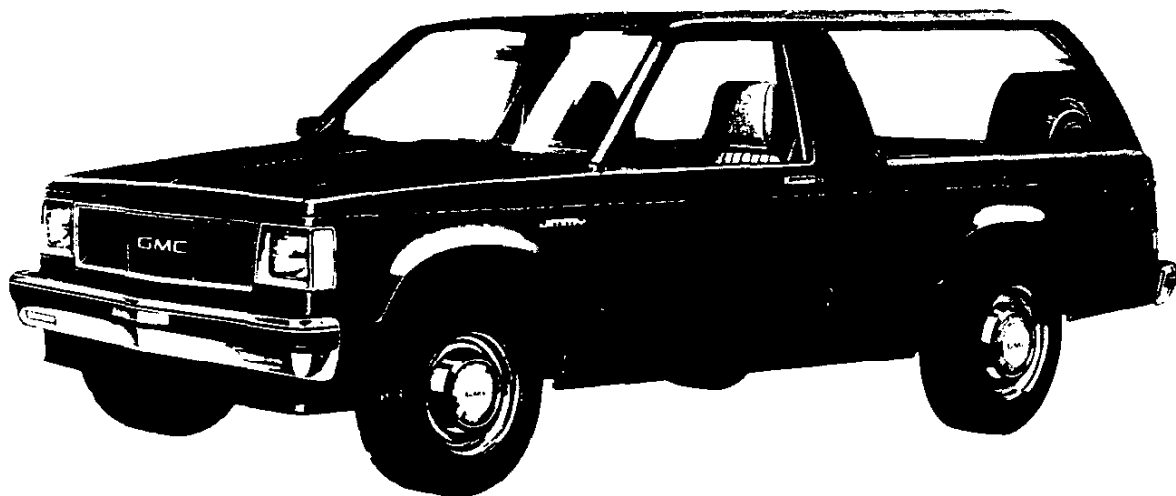
STANDARD MODEL—FEATURES

The standard models include the following items as standard equipment



EXTERIOR

- **Bumper:** Front and rear, chromed with black rub strips; front bumper incorporates parking lamps
- **Color:** See Interior and Exterior Color Selection Chart
- **Endgate-Liftglass:** Single pivot hinges on endgate and liftglass; latches on each side of endgate and at center for liftglass; gas cylinders attached to the black metal glass frame operate liftglass and provide check; cable checks on endgate; lift handle on glass. Center Key operated lock releases liftglass when turned to the left and endgate latches when turned to the right.
- **Glass:** Tinted, all windows
- **Grille:** Molded plastic; chrome and black; integral Chevrolet emblem/GMC letters at center of grille
- **Headlamp-Parking Lamp Bezels:** Molded plastic with chromed finish and black trim
- **Horn:** Single, electric, high-note
- **Hub Caps:** Bright metal (2WD). Black trim on Chevrolet model. Black hub caps on 4x4 models
- **Keys:** Two-key system; with separate keys for ignition switch and door locks
- **Lettering, Endgate:** Black or silver decal on Chevrolet depending on exterior color; red letters on GMC
- **Lights:**
 - Backup lamps: Two rear (integral with taillamps)
 - Combination parking/direction/hazard: Two front
 - Combination tail/stop/direction/hazard: Two rear
 - Headlamps: Two, rectangular
 - License plate lamp: Single rear
 - Side marker lamps with reflectors: Two front; two rear (integral with taillamps)
- **Mirrors:** RH and LH fixed arm with adjustable 6½" wide x 4" high aerodynamic heads; low gloss black finish. RH mirror is convex
- **Moldings:** Low-gloss black windshield and rear window; bright taillamp trim
- **Nameplates:** Bright "Blazer/Jimmy" nameplates on front fenders near doors. Engine designation nameplate under LH headlamp. 4-wheel-drive models have a "4x4" nameplate mounted below the fender nameplate
- **Wheels:** Painted argent
- **Windshield Wipers and Washers:** Electric, 2-speed wipers with low-gloss black finish on exposed metal portions; coordinated washer with fluidic oscillator at center of plenum inlet grille



S-10/15 BLAZER/JIMMY 2- & 4-WHEEL DRIVE SPORT/GYPSY MODEL OPTION—RPO YC3

This option includes all items in the Tahoe/Sierra Classic model option plus the additions or substitutions listed below

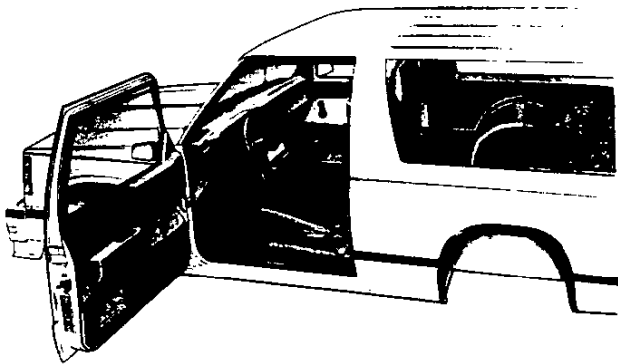


Optional rear bumper shown in illustration

GMC model shown (Chevrolet model available)

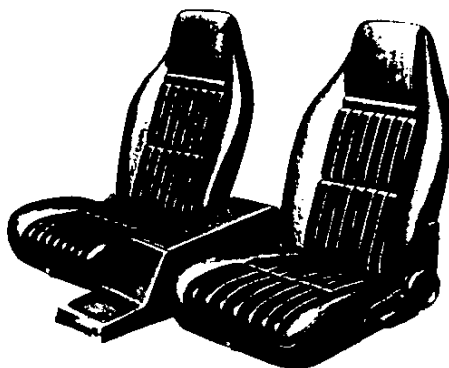
EXTERIOR

- **Bright Appearance Items:**
Delete bright wheel opening lip moldings
- **Bumpers:** Color-keyed to lower accent color, with black rub strips
- **Door Handles:** Black chrome; also includes black chrome key cylinder covers
- **Grille:** Black chrome grille and headlamp bezels
- **Taillamp Trims:** Black Chrome
- **Two-Tone Paint:** ZY7 lower-accent paint
- **Wheels:** 2-wheel drive—Rally wheel painted argent and black, with black ornamental hubs and bright trim rings; 4-wheel drive—base argent wheels with black ornamental hubs and bright trim rings
- **Wheel Opening Lip Moldings:** Black plastic



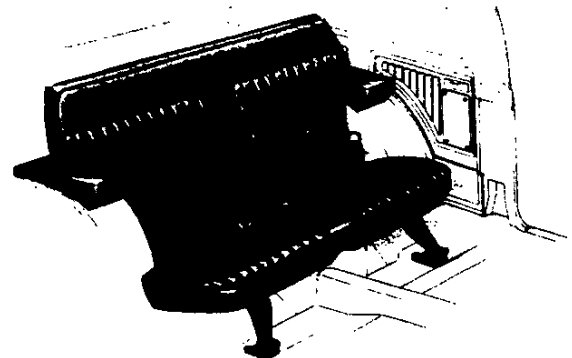
INTERIOR

- **Bright Appearance Items:**
"Sport/Gypsy" nameplate on stowage box door
- **Console:**
Color-keyed molded plastic with lockable stowage compartment; lock operated by door key
- **Seats:** High back, reclining buckets with deluxe cloth. Also available at extra cost: genuine leather trim. See Interior and Exterior Color Selection Chart for color and trim availability
- **Steering Wheel:** Sport wheel with simulated leather look
- **Trim Panel Inserts:** Deluxe cloth



STANDARD FRONT BUCKET SEATS (Custom Vinyl Seat Trim Shown)

Consists of two high back bucket-type seats with foam padding and folding backrests with inertia latches. RH seat includes easy entry feature. A lockable color-keyed plastic center console with spacious stowage compartment is available. This console is included when the Sport/Gypsy Model Option is ordered. Reclining seat backs are available and are included with Sport/Gypsy Model Option.



REAR FOLDING SEAT (Custom Vinyl Seat Trim Shown)

This two-passenger seat is available on all models, and seat trim matches front seats when Custom Vinyl, Special Custom cloth or genuine leather is ordered. The seat cushion pivots forward and down and the seat back folds on to it to provide a flat floor over the entire load area. Armrests are included and attached to wheel housings. A zipper pocket is also included below armrests when Tahoe/Sierra Classic or Sport/Gypsy trim is ordered. Two seat belts included.

S-10/15 BLAZER/JIMMY 2- & 4-WHEEL DRIVE TAHOE/SIERRA CLASSIC MODEL OPTION—RPO YC2

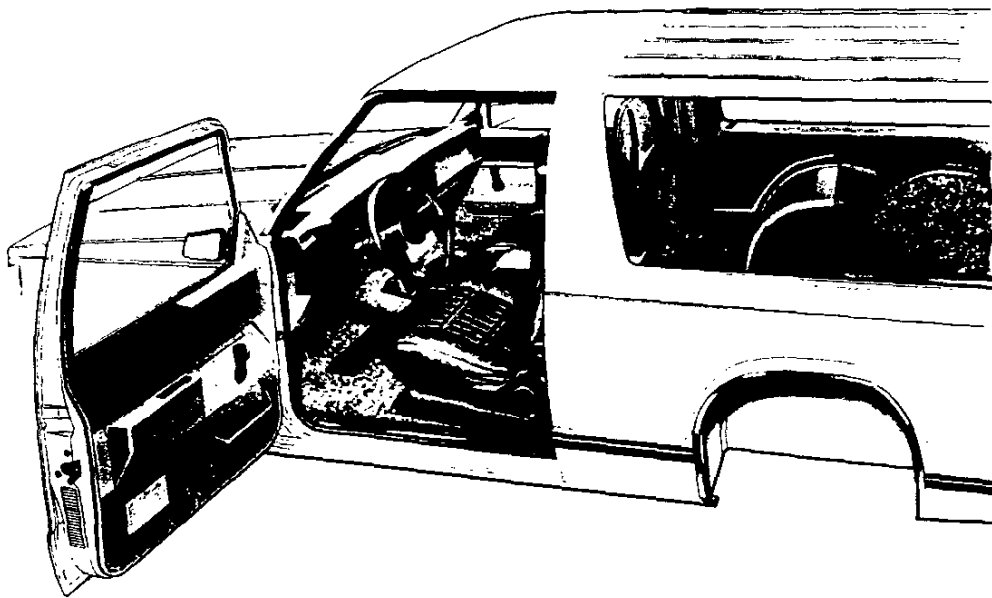
This option includes all standard model items plus the additions or substitutions listed below



Chevrolet model shown (GMC model available)

EXTERIOR

- **Bright Appearance Items:**
Body side molding trim
Bright wheel opening lip moldings
Wheel trim rings
- **Cab-to-Fender Insulators**
- **Door Handle Inserts:** Body color
- **Hood Insulator**
- **Moldings:** Black plastic body side moldings with bright insert and rear quarter window moldings
- **Endgate Trim:** Black applique with bright "Chevrolet" and red "GMC" lettering and trim



INTERIOR

- **Bright Appearance Items:**
"Tahoe/Sierra Classic" nameplate on storage box door
- **Door Trim Panels:** Special custom cloth upper insert; carpeted lower insert with pocket, plus coin holder in LH door
- **Floor Covering:** Color-keyed carpeting for entire floor area (Color-keyed rubber mats are available, if desired)
- **Instrument Cluster:** Voltmeter, oil pressure gage and engine temperature gage replace warning lamps; also includes trip odometer
- **Insulation and Sound Deadening Material:** On plenum panels (part of specific dash mat), under floor carpeting, extra-thick on headliner, on door trim panels, and on lower portion of instrument panel
- **Seats:** Choice of: 1) leather grained custom vinyl trim; 2) dual-tone woven special custom cloth/vinyl trim. Also available at extra cost: genuine leather high back bucket seats. See Interior and Exterior Color Selection Chart for color and trim availability
- **Spare Tire Cover:** Color-keyed carpet and vinyl
- **Trim Panels and Moldings:** Color-keyed cowl kick panels; carpeted lower rear quarter and endgate panels
- **Visor Mirror:** On RH sun visor

S-10/15 BLAZER/JIMMY 2- & 4-WHEEL DRIVE

INTERIOR AND EXTERIOR COLOR AVAILABILITY CHART

WITH ZY1 PAINT – WITHOUT STRIPING

Please Note: Below are the interior trim color and exterior paint combinations *recommended* by Chevrolet/GMC. The only available color code 1/color code 2 exterior color combinations are those shown in the chart below; however, any available interior trim color may be ordered with one of these exterior color combinations if that particular combination is desired by the customer.

TRIM LEVEL Seat Type	Decor	INTERIOR COLORS				
		Blue	Carmine	Charcoal	Saddle	
STANDARD INTERIOR Custom Vinyl High Back Bucket Seats	Std.	XDD4	XRR4	XJJ4	XSS4	
TAHOE/SIERRA CLASSIC Custom Vinyl High Back Bucket Seats	YC2	XDD4	XRR4	XJJ4	XSS4	
Special Custom Cloth High Back Bucket Seats		HDD4	HRR4	HJJ4	HSS4	
Leather High Back-Reclining Bucket Seats				AJJ6	ASS6	
EXTERIOR COLORS w/ZY1 PAINT	Color Code 1	Color Code 2	RECOMMENDED INTERIOR TRIM COLORS			
BLACK, MIDNIGHT	19	19		●	●	●
BLUE, GALAXY (Metallic)	28	28	●		●	●
BLUE, ASPEN (Metallic)	24	24	●		●	●
BROWN, WOODLANDS (Metallic)	39	39		●	●	●
EMERALD (Metallic)	44	44		●	●	●
GOLD, NEVADA (Metallic)	67	67		●	●	●
GRAY, STEEL (Metallic)	90	90	●		●	●
RED, APPLE	72	72		●	●	●
WHEAT	37	37		●	●	●
WHITE, FROST	12	12	●	●	●	●

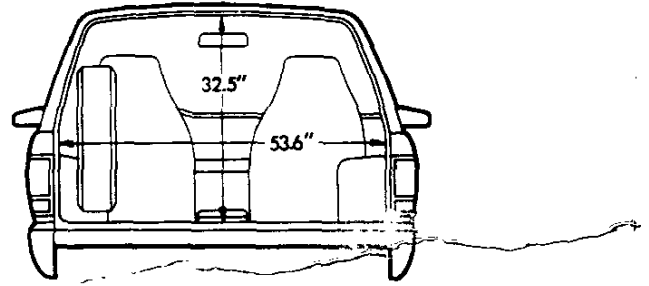
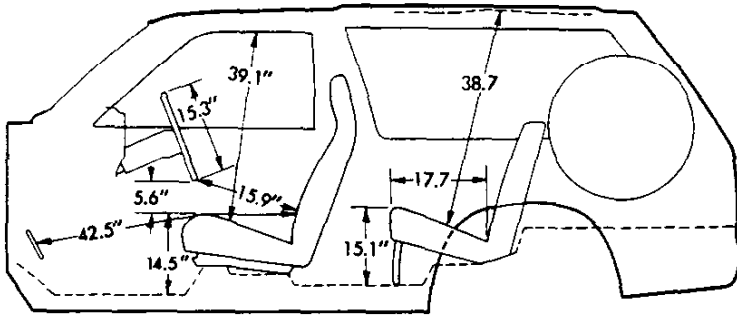
WITH D85 BODY STRIPING AND ZY1 PAINT

TRIM LEVEL Seat Type	Decor	INTERIOR COLORS				D85 STRIPING CHART RECOMMENDED COMBINATIONS Additional stripe combinations are available except where N/A is shown, provided the dealer orders (D60) as verification (N/A B84).							
		Blue	Carmine	Charcoal	Saddle								
STANDARD INTERIOR Custom Vinyl High Back Bucket Seats	Std.	XDD4	XRR4	XJJ4	XSS4								
EXTERIOR COLORS w/ZY1 PAINT	Color Code 1	Color Code 2	RECOMMENDED INTERIOR TRIM COLORS				STRIPING COLORS						
							Black 19A	Blue, Dark 28A	Gold 67A	Gray 90A	Red 72A	Silver 17A	White 12A
BLACK, MIDNIGHT	19	19		●			N/A	N/A			●		
BLACK, MIDNIGHT	19	19			●		N/A	N/A				●	
BLACK, MIDNIGHT	19	19				●	N/A	N/A	●				
BLUE, GALAXY (Metallic)	28	28	●				N/A	N/A		N/A		●	
BLUE, GALAXY (Metallic)	28	28			●		N/A	N/A	●	N/A			
BLUE, ASPEN (Metallic)	24	24	●				N/A	N/A		N/A	N/A		
BROWN, WOODLANDS (Metallic)	39	39			●	●	N/A	N/A	●	N/A	N/A	N/A	
EMERALD (Metallic)	44	44			●		N/A	N/A		N/A	N/A	●	
EMERALD (Metallic)	44	44				●	N/A	N/A	●	N/A	N/A		
GOLD, NEVADA (Metallic)	38	38			●	●		●	N/A	N/A	N/A	N/A	
GRAY, STEEL (Metallic)	90	90	●					●	N/A	N/A		N/A	
GRAY, STEEL (Metallic)	90	90		●					N/A	N/A	●	N/A	
GRAY, STEEL (Metallic)	90	90			●		●		N/A	N/A		N/A	
RED, APPLE	72	72		●				N/A	●		N/A		
RED, APPLE	72	72			●		●	N/A			N/A		
WHEAT	37	37			●		●	N/A				N/A	
WHEAT	37	37				●		N/A	●			N/A	
WHITE, FROST	12	12	●					●					N/A
WHITE, FROST	12	12		●							●		N/A
WHITE, FROST	12	12			●				●				N/A
WHITE, FROST	12	12				●			●				N/A

N/A-Not Available

S-10/15 BLAZER/JIMMY 2- & 4-WHEEL DRIVE

DIMENSIONS*

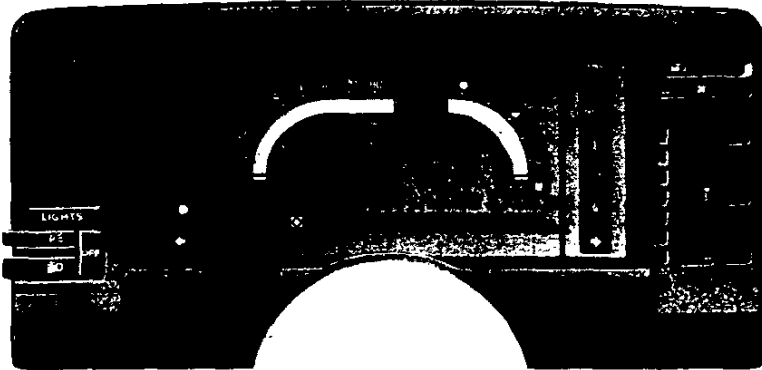


Glass Area (sq in)

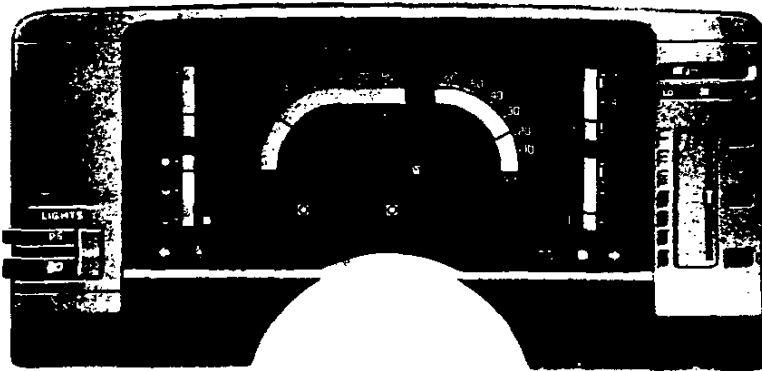
Windshield	1138.5	Rear side windows (each side)	752.0
Front side door window (each side)	409.5	Rear window	757.0

**All interior dimensions measured with front seat in rearmost position. Seat travel is 5."*

INSTRUMENT CLUSTER



Standard Cluster with warning lights for engine temperature, generator, and oil pressure.



Optional Cluster (RPO Z53) with voltmeter, engine temperature gage, oil pressure gage and trip odometer. Included with tachometer (RPO U16) and in Tahoe/Sierra Classic model options (RPO YC2) and Sport/Gypsy model options (RPO YC3) along with bright brush-finished trim, as illustrated. Cluster faceplate for standard models has argent finish. When the optional tachometer is ordered, it replaces the regular fuel gage, and another fuel gage is added.

S-10/15 BLAZER/JIMMY 2- & 4-WHEEL DRIVE

INTERIOR AND EXTERIOR COLOR AVAILABILITY CHART

WITH D90 SUNSHINE STRIPING

Please Note: Below are the interior trim color and exterior paint combinations recommended by Chevrolet/GMC. The only available color code 1/color code 2 exterior color combinations are those shown in the chart below; however, any available interior trim color may be ordered with one of these exterior color combinations if that particular combination is desired by the customer.

TRIM LEVEL Seat Type	Decor	INTERIOR COLORS			
		Blue	Carmine	Charcoal	Saddle
STANDARD INTERIOR Custom Vinyl High Back Bucket Seats	Std.	XDD4	XRR4	XJJ4	XSS4
TAHOE/SIERRA CLASSIC Custom Vinyl High Back Bucket Seats Special Custom Cloth High Back Bucket Seats Leather High Back Reclining Bucket Seats	YC2	XDD4	XRR4	XJJ4	XSS4
		HDD4	HRR4	HJJ4	HSS4
				AJJ6	ASS6
SPORT/GYPSY (Reqs ZY6 or ZY7 Paint) Deluxe Cloth High Back Bucket Seats Leather High Back Reclining Bucket Seats	YC3			DJJ4	DSS4
				AJJ6	ASS6

EXTERIOR COLORS w/ZY1 PAINT	Color Code 1	Color Code 2	RECOMMENDED INTERIOR TRIM COLORS				STRIPE COLORS				
			Blue	Carmine	Charcoal	Saddle	Black 19A	Gold 67A	Silver 17A	White 12A	Gray 90A
BLACK, MIDNIGHT	19	19	N/A	N/A	●	●	N/A	●	●	●	●
BLACK, MIDNIGHT	19	19	●	●	N/A	N/A	N/A	N/A	●	●	●
BLUE, GALAXY (Metallic)	28	28	●	●	●	●	N/A	N/A	●	●	N/A
BLUE, ASPEN (Metallic)	24	24	●	●	●	●	●	N/A	N/A	●	N/A
BROWN, WOODLANDS (Metallic)	39	39	●	●	●	●	N/A	●	N/A	●	N/A
EMERALD (Metallic)	44	44	N/A	N/A	●	●	N/A	●	●	N/A	N/A
EMERALD (Metallic)	44	44	●	●	●	●	N/A	N/A	●	●	N/A
GOLD, NEVADA (Metallic)	67	67	●	●	●	●	●	N/A	N/A	●	N/A
GRAY, STEEL (Metallic)	90	90	●	●	●	●	●	N/A	N/A	●	N/A
RED, APPLE	72	72	●	●	●	●	●	N/A	●	●	●
WHEAT	37	37	●	●	●	●	●	●	●	N/A	●
WHITE, FROST	12	12	●	●	●	N/A	●	N/A	●	N/A	●
WHITE, FROST	12	12	N/A	N/A	N/A	●	●	N/A	N/A	N/A	N/A

w/ZY6 PAINT	STRIPE COLORS (Stripe colors cannot be changed)			
	Black	Gold	Gray	White
BLACK, MIDNIGHT				
Gold, Nevada (Metallic)	19	67	N/A	N/A
Red, Apple	19	72	N/A	●
Silver (Metallic)	19	17	●	N/A
White, Frost	19	12	●	●
GOLD, NEVADA (Metallic)				
Black, Midnight	67	19	N/A	N/A
GRAY, STEEL (Metallic)				
Black, Midnight	90	19	●	●
Blue, Galaxy (Metallic)	90	28	●	N/A
Red, Apple	90	72	N/A	●
Silver (Metallic)	90	17	●	●
White, Frost	90	12	●	●
WHITE, FROST				
Black, Midnight	12	19	N/A	●
Blue, Galaxy (Metallic)	12	28	●	N/A
Gold, Nevada (Metallic)	12	67	N/A	●
Red, Apple	12	72	N/A	●
Silver (Metallic)	12	17	●	●

N/A-Not Available

S-10/15 BLAZER/JIMMY 2- & 4-WHEEL DRIVE

INTERIOR AND EXTERIOR COLOR AVAILABILITY CHART

WITH BODY STRIPING AND ZY6, ZY7 or ZY8 PAINT

Please Note: Below are the interior trim color and exterior paint combinations recommended by Chevrolet/GMC. The only available color code 1/color code 2 exterior color combinations are those shown in the chart below; however, any available interior trim color may be ordered with one of these exterior color combinations if that particular combination is desired by the customer.

TRIM LEVEL Seat Type	INTERIOR COLORS				
	Decor	Blue	Carmine	Charcoal	Saddle
STANDARD INTERIOR Custom Vinyl High Back Bucket Seats	Std.	XDD4	XRR4	XJJ4	XSS4
TAHOE/SIERRA CLASSIC Custom Vinyl High Back Bucket Seats	YC2	XDD4	XRR4	XJJ4	XSS4
		HDD4	HRR4	HJJ4	HSS4
Special Custom Cloth High Back Bucket Seats				AJJ6	ASS6
Leather High Back Reclining Bucket Seats				DJJ4	DSS4
SPORT/GYPSY (Reqs. ZY6 or ZY7 Paint) Deluxe Cloth High Back Bucket Seats	YC3			AJJ6	ASS6
Leather High Back Reclining Bucket Seats					

EXTERIOR COLORS w/ ZY6, ZY7 or ZY8 PAINT	Color Code 1	Color Code 2	RECOMMENDED INTERIOR TRIM COLORS	STRIPE COLORS — ZY7 ONLY (w/o YC2 or YC3) (Stripe Colors Cannot be Changed) (N/A ZY8) (With ZY6 Paint Refer to Page 6 for Striping Chart)						
				Black	Blue, Dark	Gold	Gray	Red	Silver	White
BLACK, MIDNIGHT										
Gold, Nevada (Metallic)	19	67								
Red, Apple	19	72								
Silver (Metallic)	19	17								
White, Frost	19	12								
BLUE, GALAXY (Metallic)										
Gold, Nevada (Metallic)	28	67								
Silver (Metallic)	28	17								
White, Frost	28	12								
BLUE, ASPEN (Metallic)										
Black, Midnight	24	19								
Blue, Galaxy (Metallic)	24	28								
Silver (Metallic)	24	17								
White, Frost	24	12								
BROWN, WOODLANDS (Metallic)										
Black, Midnight	39	19								
Gold, Nevada (Metallic)	39	67								
Silver (Metallic)	39	17								
White, Frost	39	12								
EMERALD (Metallic)										
Black, Midnight	44	19								
Gold, Nevada (Metallic)	44	67								
Silver (Metallic)	44	17								
White, Frost	44	12								
GOLD, NEVADA (Metallic)										
Black, Midnight	67	19								
Blue, Galaxy (Metallic)	67	28								
White, Frost	67	12								
GRAY, STEEL (Metallic)										
Black, Midnight	90	19								
Blue, Galaxy (Metallic)	90	28								
Red, Apple	90	72								
Silver (Metallic)	90	17								
White, Frost	90	12								
RED, APPLE										
Black, Midnight	72	19								
Silver (Metallic)	72	17								
White, Frost	72	12								
WHEAT										
Black, Midnight	37	19								
Blue, Galaxy (Metallic)	37	28								
Gold, Nevada (Metallic)	37	67								
Red, Apple	37	72								
White, Frost	37	12								
WHITE, FROST										
Black, Midnight	12	19								
Blue, Galaxy (Metallic)	12	28								
Gold, Nevada (Metallic)	12	67								
Red, Apple	12	72								
Silver (Metallic)	12	17								

S-10/15 BLAZER/JIMMY 2- & 4-WHEEL DRIVE
STRIPING CHART FOR ZY6 CUSTOM TWO-TONE

INTERIOR TRIM COLOR			BLUE	CARMINE	CHARCOAL	SADDLE
EXTERIOR PAINT COLOR	Color Code 1	Color Code 2	STRIPE COLORS			
BLACK, MIDNIGHT/Gold, Nevada (Met)	19	67	*Orange/Yellow	*Orange/Yellow	*Orange/Yellow	Orange/Yellow
BLACK, MIDNIGHT/Red, Apple	19	72	*Silver	Silver	Silver	*Silver
BLACK, MIDNIGHT/Silver (Met)	19	17	*Blue	Red	Blue	*Red
BLACK, MIDNIGHT/White, Frost	19	12	*Blue	Red	Red	*Orange/Yellow
BLUE, GALAXY (MET)/Gold, Nevada (Met)	28	67	Blue	*Blue	*Blue	Blue
BLUE, GALAXY (MET)/Silver (Met)	28	17	Blue	*Red	Blue	*Blue
BLUE, GALAXY (MET)/White, Frost	28	12	Blue	*Red	*Blue	*Blue
BLUE, ASPEN (MET)/Black, Midnight	24	19	Blue	*Blue	Blue	*Blue
BLUE, ASPEN (MET)/Blue, Galaxy (Met)	24	28	Blue	*Silver	Silver	*Blue
BLUE-ASPEN (MET)/Silver (Met)	24	17	Blue	*Red	*Blue	*Blue
BLUE, ASPEN (MET)/White, Frost	24	12	Blue	*Red	*Blue	*Blue
BROWN, WOODLANDS (MET)/Black, Midnight	39	19	*Gold	*Gold	Gold	Gold
BROWN, WOODLANDS (MET)/Gold, Nevada (Met)	39	67	*Orange/Yellow	*Orange/Yellow	*Orange/Yellow	Orange/Yellow
BROWN, WOODLANDS (MET)/Silver (Met)	39	17	*Gold	*Gold	Gold	Gold
BROWN, WOODLANDS (MET)/White, Frost	39	12	*Silver	*Gold	*Orange/Yellow	Gold
EMERALD (MET)/Black, Midnight	44	19	*Gold	*Gold	Gold	Gold
EMERALD (MET)/Gold, Nevada (Met)	44	67	*Orange/Yellow	*Orange/Yellow	*Orange/Yellow	Orange/Yellow
EMERALD (MET)/Silver (Met)	44	17	*Blue	*Blue	Blue	*Blue
EMERALD (MET)/White, Frost	44	12	*Silver	*Silver	Silver	Gold
GOLD, NEVADA (MET)/Black, Midnight	67	19	*Blue	*Red	Red	Orange/Yellow
GOLD, NEVADA (MET)/Blue, Galaxy (Met)	67	28	Blue	*Blue	*Blue	Blue
GOLD, NEVADA (MET)/White, Frost	67	12	*Gold	*Gold	*Gold	Gold
GRAY, STEEL (MET)/Black, Midnight	90	19	*Blue	Red	Red	*Red
GRAY, STEEL (MET)/Blue, Galaxy (Met)	90	28	Blue	*Blue	*Blue	*Blue
GRAY, STEEL (MET)/Red, Apple	90	72	*Silver	Silver	Silver	*Silver
GRAY, STEEL (MET)/Silver (Met)	90	17	Blue	Red	Red	*Red
GRAY, STEEL (MET)/White, Frost	90	12	Blue	Red	Red	*Red
RED, APPLE/Black, Midnight	72	19	*Silver	Red	Silver	*Red
RED, APPLE/Silver (Met)	72	17	*Red	Red	Red	*Red
RED, APPLE/White, Frost	72	12	*Silver	Silver	Silver	*Gold
WHEAT/Black, Midnight	37	19	*Gold	*Red	Gold	Gold
WHEAT/Blue, Galaxy (Met)	37	28	Blue	*Blue	*Gold	Gold
WHEAT/Gold, Nevada (Met)	37	67	*Gold	*Orange/Yellow	Orange/Yellow	Orange/Yellow
WHEAT/Red, Apple	37	72	*Gold	Gold	*Gold	Gold
WHEAT/White, Frost	37	12	*Gold	*Red	*Orange/Yellow	Gold
WHITE, FROST/Black, Midnight	12	19	*Blue	Red	Red	*Red
WHITE, FROST/Blue, Galaxy (Met)	12	28	Blue	*Blue	*Blue	*Blue
WHITE, FROST/Gold, Nevada (Met)	12	67	*Orange/Yellow	*Orange/Yellow	Orange/Yellow	Orange/Yellow
WHITE, FROST/Red, Apple	12	72	*Silver	Silver	Silver	*Gold
WHITE, FROST/Silver (Met)	12	17	Blue	Red	Red	*Red

*Stripe color/trim color combination available but not recommended.

S-10/15 BLAZER/JIMMY 2- & 4-WHEEL DRIVE

INTERIOR AND EXTERIOR COLOR AVAILABILITY CHART

WITH D98 RALLY STRIPING

Please Note: Below are the interior trim color and exterior paint combinations recommended by Chevrolet/GMC. The only available color code 1/color code 2 exterior color combinations are those shown in the chart below; however, any available interior trim color may be ordered with one of these exterior color combinations if that particular combination is desired by the customer.

TRIM LEVEL Seat Type	Decor	INTERIOR COLORS			
		Blue	Carmine	Charcoal	Saddle
STANDARD INTERIOR Custom Vinyl High Back Bucket Seats	Std.	XDD4	XRR4	XJJ4	XSS4
TAHOE/SIERRA CLASSIC Custom Vinyl High Back Bucket Seats	YC2	XDD4	XRR4	XJJ4	XSS4
Special Custom Cloth High Back Bucket Seats		HDD4	HRR4	HJJ4	HSS4
Leather High Back Reclining Bucket Seats				AJJ6	ASS6

**D98 STRIPING CHART
RECOMMENDED COMBINATIONS**

Stripe color options must be specified on all ZY1 Solid Paint applications. Additional stripe combinations are available except where N/A is shown, provided the dealer orders (D&O) as verification.

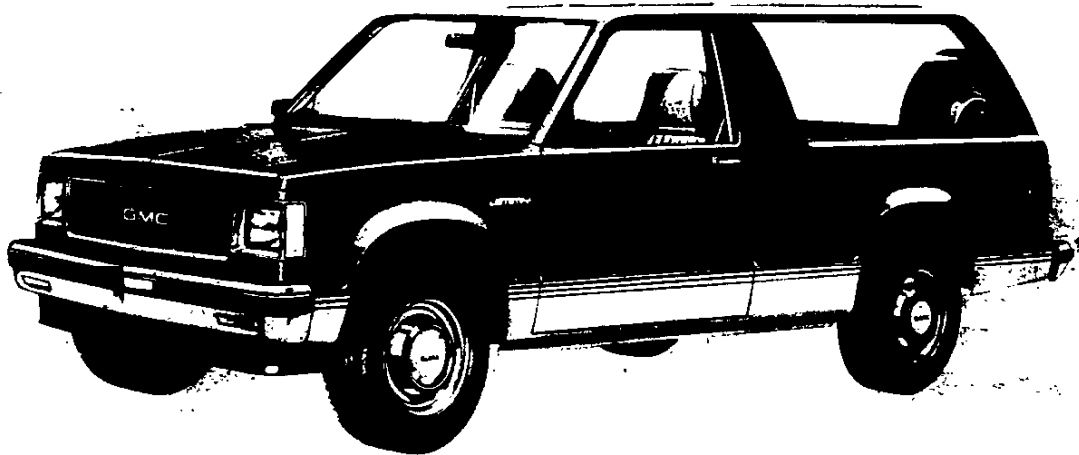
EXTERIOR COLORS w/ZY1 PAINT	Color Code 1	Color Code 2	RECOMMENDED INTERIOR TRIM COLORS				STRIPE COLORS						
			Blue	Carmine	Charcoal	Saddle	Black 19A	Dk. Blue 28A	Gold 67A	Red 72A	Silver 17A	White 12A	
BLACK, MIDNIGHT	19	19	●				N/A	N/A				●	
BLACK, MIDNIGHT	19	19				⊙	N/A	N/A	●				
BLACK, MIDNIGHT	19	19		●			N/A	N/A		●			
BLUE, GALAXY (Metallic)	28	28	●		●		N/A	N/A				●	
BLUE, GALAXY (Metallic)	28	28				●	N/A	N/A	●				
BLUE, ASPEN (Metallic)	24	24	●		●			●	N/A	N/A			
BROWN, WOODLANDS (Metallic)	39	39			●	●	N/A	N/A	●	N/A	N/A	N/A	
EMERALD (Metallic)	44	44				●	N/A	N/A	●	N/A			
EMERALD (Metallic)	44	44			●		N/A	N/A		N/A	●		
GOLD, NEVADA (Metallic)	67	67			●	●		●	N/A	N/A	N/A	N/A	
GRAY, STEEL (Metallic)	90	90			●			●		N/A	N/A	N/A	
GRAY, STEEL (Metallic)	90	90	●					●		N/A	N/A	N/A	
GRAY, STEEL (Metallic)	90	90		●					●		N/A	N/A	
RED, APPLE	72	72			●			●	N/A		N/A		
RED, APPLE	72	72		●					N/A	●	N/A		
WHEAT	37	37			●			●	N/A			N/A	
WHEAT	37	37				●			N/A	●		N/A	
WHITE, FROST	12	12			●			●					N/A
WHITE, FROST	12	12	●						●				N/A
WHITE, FROST	12	12				●				●			N/A
WHITE, FROST	12	12		●							●		N/A

N/A-Not Available

S-10/15 BLAZER/JIMMY 2- & 4-WHEEL DRIVE

SOLID AND TWO-TONE* EXTERIOR COLOR COMBINATIONS

The application of paint for solid and two-tone exterior color combinations is shown below.



SPORT TWO-TONE

Sport two-tone paint (ZY7), which provides a lower accent two-tone scheme, is available on base and Tahoe/Sierra Classic models, and is included when the Sport/Gypsy Model Option (YC3) is ordered. A wide, four stripe decal is included on base models, and is applied below the lower styling crease lines. The decal color matches the color code 2 paint choice, and is applied over the paint break line in such a way that the color code 1 color paint shows through the clear areas to contrast with the decal colors. The

color code 1 color choice is applied to the areas above the bottom stripe of the decal, and the color code 2 color is applied to the areas below the decal. RPO B84 Body Side Moldings may be ordered with ZY7 on base models, if desired (at extra cost), and will replace the striping decal. Tailgate lettering for base models is silver when Galaxy Blue, Indian Bronze, Midnight Black, or Apple Red exterior colors are specified and black for all other exterior colors.



SPECIAL TWO-TONE

Special two-tone paint (ZY8), which provides a mid-accent two-tone scheme, is available on base and Tahoe/Sierra Classic models and includes B84 body side and wheel opening moldings (except on Tahoe/Sierra Classic models where already included) which are applied below the lower styling crease lines. The areas below the molding and above

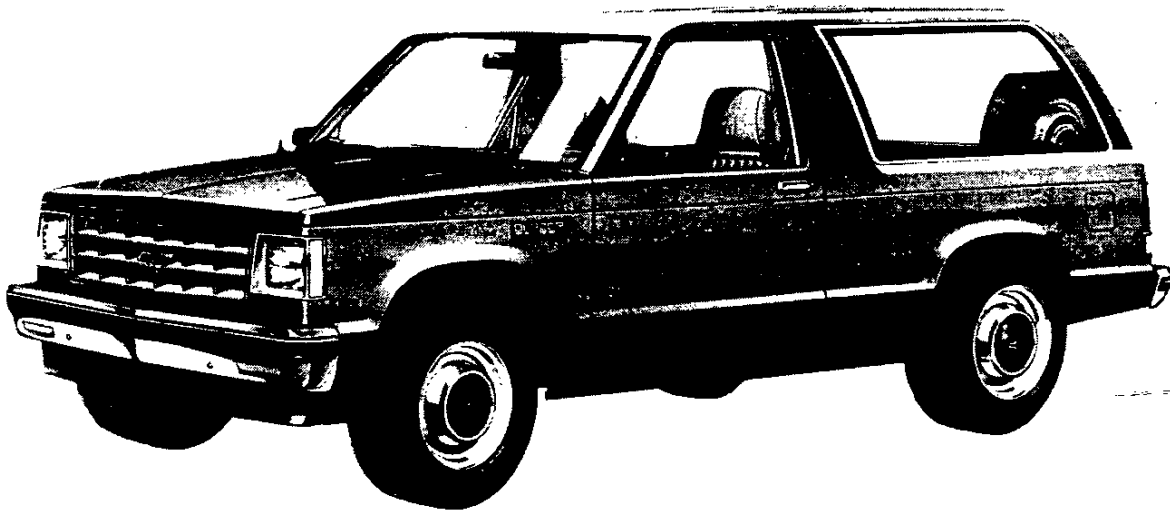
the belt styling crease line are painted the color code 1 paint color. The areas between the molding and the belt styling crease line are painted the color code 2 color. Tailgate lettering for base models is silver when Galaxy Blue, Indian Bronze, Midnight Black, or Apple Red color code 2 exterior colors are specified and black for all other colors.

*Optional at extra cost

S-10/15 BLAZER/JIMMY 2- & 4-WHEEL DRIVE

SOLID AND TWO-TONE* EXTERIOR COLOR COMBINATIONS

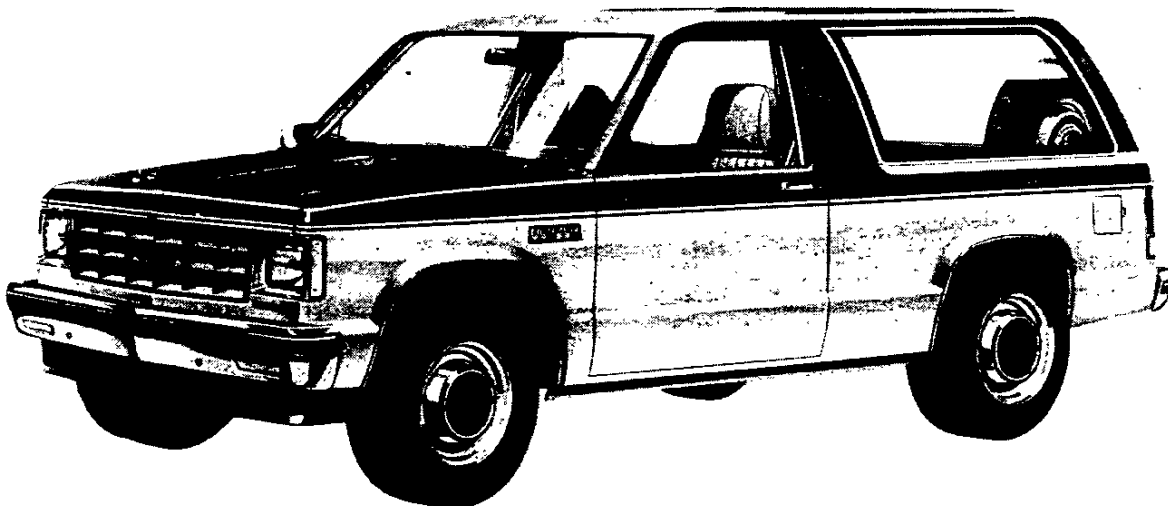
The application of paint for solid and two-tone exterior color combinations is shown below.



SOLID COLOR

Solid paint (ZY1) is standard on all models (except Sport/Gypsy). All painted areas of the body and front end sheet metal are the same color. Tailgate lettering for Chevrolet base models is silver when Galaxy Blue,

Woodlands Brown, Midnight Black, or Apple Red exterior colors are specified and black for all other exterior colors. Tailgate lettering for GMC base models is red with all exterior colors.



CUSTOM TWO-TONE

Custom two-tone paint (ZY6) is available on all models. The areas above the belt styling crease line are painted the color code 1 paint color. The areas below that line are painted the color code 2 color. A color-keyed decal stripe is applied at the belt styling crease line just below the paint break (See color stripe chart on page

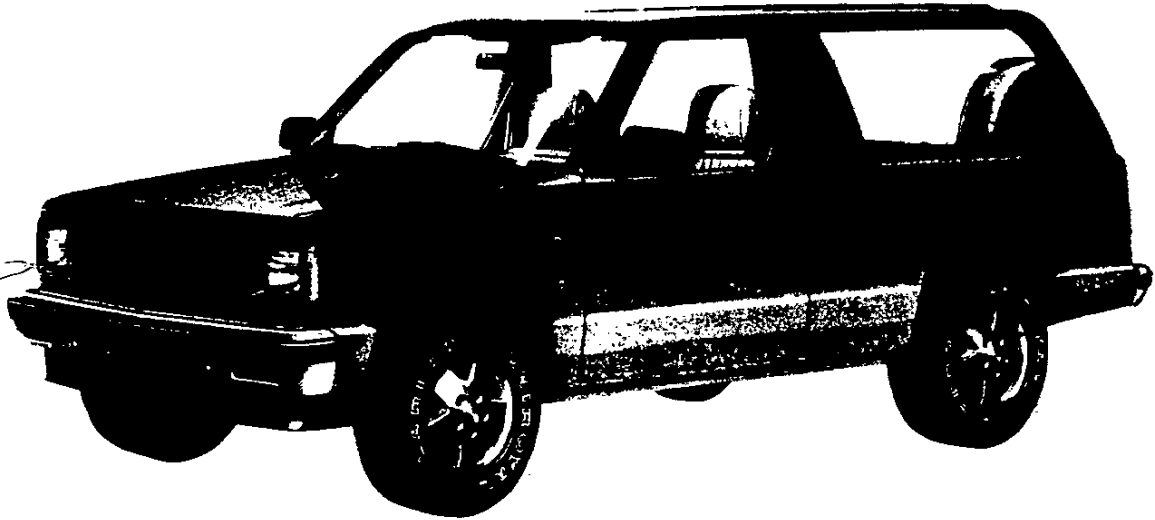
1). Tailgate lettering for base Chevrolet models is silver when Galaxy Blue, Woodlands Brown, Midnight Black, or Apple Red color code 2 exterior colors are specified and black for all other colors. Tailgate lettering for GMC base models is red with all exterior colors.

*Optional at extra cost.

S-10/15 BLAZER/JIMMY 2- & 4-WHEEL DRIVE

SOLID AND TWO-TONE* EXTERIOR COLOR COMBINATIONS

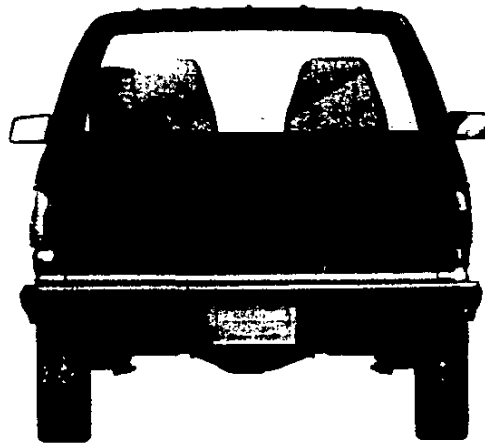
The application of paint for solid and two-tone exterior color combinations is shown below.



HIGH COUNTRY/TIMBERLINE PACKAGE

The High Country/Timberline Package is available only when the YC2 Tahoe/Sierra Classic model option or YC3 Sport/Gypsy model and ZY6 Custom Two-Tone Paint is ordered on 4x4 Blazer/Jimmy models. Color Code 1 must be Midnight Black and Color Code 2 must be Nevada Gold Metallic. A wide decal is applied across the center of the vehicle and is graduated in color from Black at the top to Gold at the bottom. The decal extends from the belt styling crease line to the lower styling crease line.

The High Country/Timberline Package includes special decal nameplates; black chrome on grille, headlamp trim, tail lamp trim, door handles, and nameplates; reclining seat backs and deep tinted glass (with light tinted rear window), black below eyeline mirrors, console (except on YC3 models where it is already included), color-keyed bumpers and special gold tone aluminum wheels. The package requires white lettered tires, full size spare tire and saddle tan interior trim with either custom cloth or genuine leather seat trim.



*Optional at extra cost

NOTES

