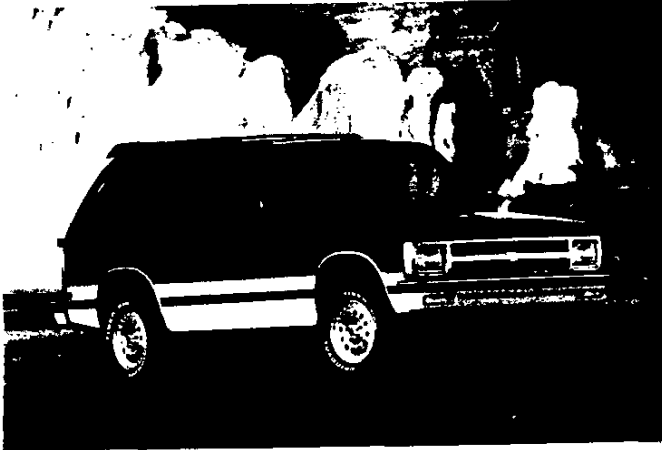
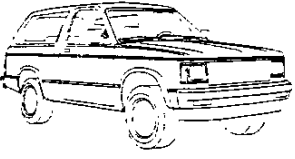
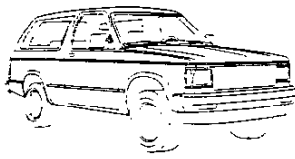


S-10 BLAZER**CONTENTS**

	<u>Page</u>
MODELS	2
STANDARD S-10 TRIM 2-DOOR	3
TAHOE (YC2) TRIM 2-DOOR	4
SPORT (YC3) TRIM 2-DOOR	5
TAHOE (YC2) TRIM 4-DOOR	6
SPORT (YC3) TRIM 4-DOOR	7
TAHOE LT(YC9) TRIM 4-DOOR	8
POWERTRAINS	9
STANDARD SUSPENSION	11
WHEELS AND TIRES	12
FRAME/STEERING/BRAKES	13
ELECTRICAL	14
COOLING	15
DIMENSIONS	16
OPTIONS	18
COLOR COMBINATIONS	21
EXTERIOR COLORS	B
INTERIOR TRIM	C
SEATS	D
TRAILERING	E

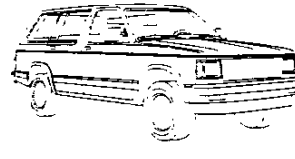
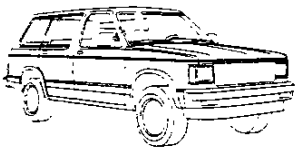
TWO-DOOR MODELS

S-10 2-DOOR BLAZER	MODEL NUMBER	WB (IN.)	GVWR (LBS.)	MAX' PAYLOAD (LBS.)	PASS. CAP. (STD/OPT)	STD ENGINE/ TRANS	OPT ENGINE/ TRANS
		CS10516/E55	100.5	4350	1169	2/4	4.3L V6/M5
S-10 2-DOOR BLAZER	MODEL NUMBER	WB (IN.)	GVWR (LBS.)	MAX' PAYLOAD (LBS.)	PASS. CAP. (STD/OPT)	STD ENGINE/ TRANS	OPT ENGINE/ TRANS
		CT10516/E55	100.5	4700	1215	2/4	4.3L V6/M5

S-10 2-DOOR BLAZER
The S-10 2-door Blazer is offered in one wheelbase and a choice of V6 powertrains.

S-10 2-DOOR BLAZER
The S-10 2-door Blazer features the versatility of four-wheel drive, in addition to V6 powertrain availability.

FOUR-DOOR MODELS

S-10 4-DOOR BLAZER	MODEL NUMBER	WB (IN.)	GVWR (LBS.)	MAX' PAYLOAD (LBS.)	PASS. CAP. (STD/OPT)	STD ENGINE/ TRANS	OPT ENGINE/ TRANS
		CS10506/E55	107.0	4850	1481	3/5/6	4.3L V6/M5
S-10 4-DOOR BLAZER	MODEL NUMBER	WB (IN.)	GVWR (LBS.)	MAX' PAYLOAD (LBS.)	PASS. CAP. (STD/OPT)	STD ENGINE/ TRANS	OPT ENGINE/ TRANS
		CT10506/E55	107.0	5100	1388	6/5	4.3L V6/M5

S-10 4-DOOR BLAZER
The S-10 4-door Blazer, 2-wheel drive model, includes a standard 3-passenger front bench seat with Tahoe trim and 2-front bucket seats with Tahoe LT or Sport trim. A 3-passenger rear bench seat is available. It also features increased cargo length and volume as well as a higher GVWR capacity compared to the 2-door model.

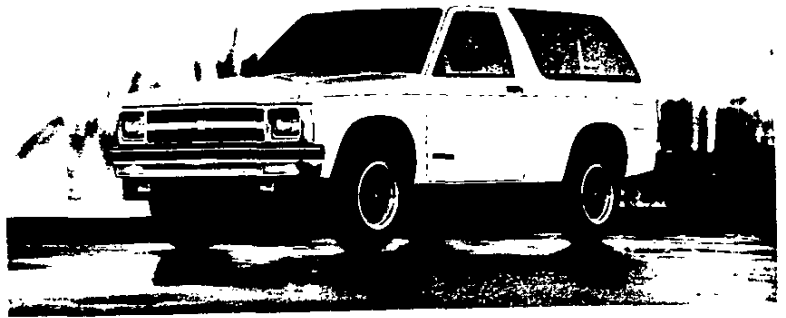
S-10 4-DOOR BLAZER
The S-10 4-door Blazer, 4-wheel drive model, offers the same front seating configurations as in the 4-door, 2-wheel drive model. However, the 3-passenger rear bench seat is standard. It also features the versatility of 4-wheel drive and increased cargo length and volume as well as higher GVWR capacity compared to the 2-door model.

*Based on curb weight.

STANDARD S-10 (2-DOOR)

The Standard trim is the base trim level for the S-10 Blazer 2-door. It is designed to offer buyers a high level of standard features when purchasing a base-level truck.

The following features are standard.



Some equipment shown may be optional or extra cost.

POWERTRAIN/CHASSIS

- ALTERNATOR: 100 amp Delcotron.
- BATTERY: 525 amp CCA.
- BRAKES: Power-assisted; front disc, rear drum. Includes four-wheel anti-lock braking system.
- ENGINE: 4.3-liter V6 EFI. 160 net HP @ 4000 rpm and 230 lb. ft. of net torque @ 2800 rpm.
- EXHAUST: Single.

- FRAME: All-welded ladder-type channel design and boxed front-end section.
- FUEL TANK: 20-gallon (approx.).
- REAR AXLE: Hypoid, Semi-Floating. Ratio: 3.08:1.
- SHOCK ABSORBERS: Front—25 mm. Rear—25 mm.
- STABILIZER BAR: Front—1.14 in. on 2-wheel drive and 1.26 in. on 4-wheel drive.

- STEERING: Integral power. Ratio: 17.5:1.
- SUSPENSION: Front—Independent with computer-selected coil springs on 2-wheel drive and torsion bars on 4-wheel drive. Rear—Semi-Elliptic two-stage multi-leaf springs.
- TOW HOOKS: Front-mounted on the 4-wheel drive.
- TRANSMISSION: 5-speed manual with overdrive.

EXTERIOR

- AIR DAM: Black.
- BUMPER: Front and rear chromed with black rub strips. Front includes integral parking lamps.
- COLORS: Choice of ten in a solid paint scheme. See Color and Trim specifications for details.
- DOOR HANDLES: Black finish.

- ENGINE COMPARTMENT LAMP: Located under hood at rear of engine compartment.
- GRILLE: Chrome and silver colored molded plastic with headlamp/side marker lamp bezels.
- HEADLAMPS: Single rectangular halogen.
- HORN: Single electric high-note.
- INSULATION: Hood blanket and cowl to fender seals.

- MIRRORS: Black RH and LH below-eye-line type. Head size is 6.0" x 7.0"
- TIRES: Five P205/75R15 all-season steel-belted radials.
- WHEELS: Five 15" x 6" steel painted silver with bright metal hub caps on the 2-wheel drive and painted silver on the 4-wheel drive.

INTERIOR

- ARMRESTS: RH and LH padded integral with the door panels.
- CIGARETTE LIGHTER: Located on instrument panel. Includes ashtray light.
- COAT HOOKS: RH and LH.
- COLORS: Choice of Blue, Garnet, Charcoal or Gray.
- CONVENIENCE TRAY
- DOME LAMP: Front and rear with bright trim and switches in RH and LH door jambs. Switches also operate door-courtesy lamp.
- DOOR PANELS: Color-keyed plastic with map pockets and gray housing in door latch release area.
- DOOR SILL PLATE: Black. Also, endgate scuff plate is color-keyed.

- FLOOR COVERING: Color-keyed full floor carpeting.
- GAUGES: Including speedometer, odometer, trip odometer, fuel level, voltmeter, temperature, oil pressure gauges and additional telltale lights.
- GLOVE BOX: Includes locking door and light.
- HEADLAMP WARNING BUZZER: Headlamps on.
- HEADLINER: Full-foam with color-keyed cloth cover. Includes grab handles over all outboard passenger seating positions.
- HEATER: Deluxe with windshield and side window defoggers.
- INSULATION: Provided on the dash panel, doors, roof, and floor.

- MIRROR: 10-inch rearview.
- RADIO: Electronically-tuned AM with two 4" x 6" front dash standard speakers, digital clock and fixed mast antenna. (Please refer to the Delco Electronics brochure in RPO Detail for further information).
- SEATS: High-back buckets with folding backs and leather-grained Custom Vinyl. RH seat includes easy-entry feature.
- SPARE TIRE/ WHEEL: Full-size with steel wheel located at left rear. Includes spare tire cover.
- STEERING WHEEL: Deluxe black 4-spoke.
- SUNSHADES: Padded, color-keyed RH and LH.
- TOOLS: Mechanical jack and wheel wrench located at left rear storage compartment.
- WINDOWS: Tinted glass.

TAHOE (2-DOOR)

(YC2)

The Tahoe trim is an optional trim level for the S-10 Blazer 2-door. It is designed to offer truck buyers an increased level of comfort and convenience features compared to the Standard trim.

The following features are standard. Bold type denotes equipment in addition to or replacing that of the Standard S-10 Blazer trim level.

POWERTRAIN/CHASSIS

- ALTERNATOR: 100 amp Delcotron.
- BATTERY: 525 amp CCA.
- BRAKES: Power-assisted; front disc, rear drum. Includes four-wheel anti-lock braking system.
- ENGINE: 4.3-liter V6 EFI, 160 net HP @ 4000 rpm and 230 lb. ft. of net torque @ 2800 rpm.
- EXHAUST: Single.
- FRAME: All-welded ladder-type, channel design and boxed front-end section.
- FUEL TANK: 20-gallon (approx.).
- REAR AXLE: Hypoid, Semi-Floating. Ratio: 3.08:1.
- SHOCK ABSORBERS: Front—25 mm. Rear—25 mm.
- STABILIZER BAR: Front—1.14 in. on 2-wheel drive and 1.26 in. on 4-wheel drive.
- STEERING: Integral power. Ratio: 17.5:1.
- SUSPENSION: Front—Independent with computer-selected coil springs on 2-wheel drive and torsion bars on 4-wheel drive. Rear—Semi-Elliptic two-stage multi-leaf springs.
- TOW HOOKS: Front-mounted on the 4-wheel drive.
- TRANSMISSION: 5-speed manual with overdrive.

EXTERIOR

- AIR DAM: Black.
- BODY SIDE MOLDINGS: **Black with bright insert.**
- BUMPER: Front and rear chromed with black rub strips. Front includes integral parking lamps.
- COLORS: Choice of ten in a solid paint scheme. See Color and Trim specifications for details.
- DOOR HANDLES: Black finish.
- ENGINE COMPARTMENT LAMP: Located under the hood at rear.
- GRILLE: Chrome and silver colored molded plastic with headlamp/side marker lamp bezels.
- HEADLAMPS: Single rectangular halogen.
- HORN: Single electric high-note.
- INSULATION: Hood insulation and cowl-to-fender seals.
- MIRRORS: Black RH and LH below-eye-line type. Head size is 6.0"x7.0".
- TIRES: Five P205/75R15 all-season steel-belted radials.
- TRIM: **Bright taillight trim with black applique.**
- WHEEL OPENING MOLDINGS: **Bright.**
- WHEELS: **Five 15" x 7" Rally with black center insert and gold "bowtie", silver-colored coined surfaces, and trim rings on 2-wheel drive. Five 15" x 6" steel wheels painted silver with trim rings on 4-wheel drive.**

INTERIOR

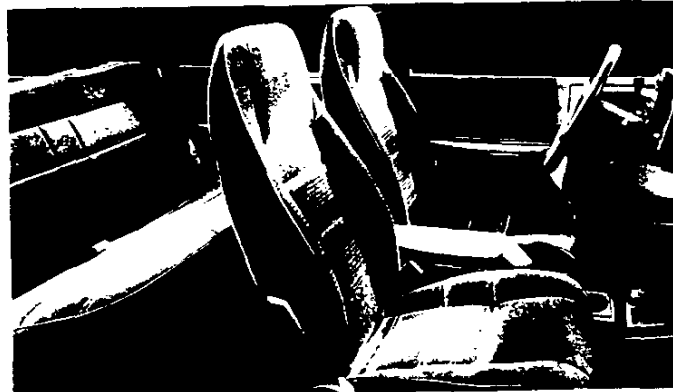
- ARMRESTS: RH and LH padded integral with door panels.
- CIGARETTE LIGHTER: Located on instrument panel. Includes ashtray light.
- COAT HOOKS: RH and LH.
- COLORS: Choice of Blue, Garnet, Charcoal or Gray.
- CONVENIENCE TRAY
- DOME LAMP: Front and rear with bright trim and switches in RH and LH door jambs. Switches also operate a door-courtesy lamp.
- DOOR PANELS: **Special Custom Cloth upper insert, carpeted lower insert with map pocket plus coin holder in LH door.**
- DOOR SILL PLATE: Black. Also, endgate scuff plate is color-keyed.
- FLOOR CONSOLE: **Located between front bucket seats. Includes latch and a cup holder.**
- FLOOR COVERING: Color-keyed front **and rear floor mats over full floor carpeting.**
- GAUGES: Including speedometer, odometer, trip odometer, fuel level, voltmeter, temperature, oil pressure gauges and additional telltale lights.
- GLOVE BOX: Includes locking door and light.
- HEADLAMP WARNING BUZZER: Headlamps on.
- HEADLINER: Full-foam with color-keyed cloth cover. Includes grab handles over all outboard passenger seating positions.
- HEATER: Deluxe with windshield and side window defoggers.
- INSULATION: Provided on the dash panel, doors, roof, and floor.
- KICK PANELS: **Color-keyed cowl kick, carpeted lower rear quarter and endgate panels.**
- MIRRORS: 10-inch rearview with **dual reading lamps. Also, RH visor mirror.**
- RADIO: Electronically-tuned AM with two 4" x 6" front dash standard speakers, digital clock and fixed mast antenna. (Please refer to the Delco Electronics brochure in RPO Detail for further information).
- SEATS: High-back **reclining** buckets with folding backs **and a choice of Custom Vinyl, Special Custom Cloth or Ultra-soft Leather trim.** RH seat includes easy-entry feature.
- SPARE TIRE/ WHEEL: Full-size with steel wheel located at left rear. Includes spare tire cover.
- STEERING WHEEL: Deluxe black 4-spoke.
- SUNSHADES: Padded, color-keyed RH and LH.
- TOOLS: Mechanical jack and wheel wrench located at left rear storage compartment.
- WINDOWS: Tinted glass.

SPORT (2-DOOR)

(YC3)

The Sport trim level is an optional trim level for the S-10 Blazer 2-door model lineup. It is designed to offer buyers an increased level of comfort and convenience features compared to the Standard S-10 Blazer trim level and the optional Tahoe trim level.

The following features are standard. Bold type denotes equipment in addition to or replacing that of the Tahoe trim level.



Some equipment shown may be optional or extra cost. (4-Door model shown).

POWERTRAIN/CHASSIS

- ALTERNATOR: 100 amp Delcotron.
- BATTERY: 525 amp CCA.
- BRAKES: Power-assisted; front disc, rear drum. Includes four-wheel anti-lock braking system.
- ENGINE: 4.3-liter V6 EFI. 160 net HP @ 4000 rpm and 230 lb. ft. of net torque @ 2800 rpm.
- EXHAUST: Single.
- FRAME: All-welded ladder-type, channel design and boxed front-end section.
- FUEL TANK: 20-gallon (approx.).
- REAR AXLE: Hypoid, Semi-Floating. Ratio: 3.08:1.
- SHOCK ABSORBERS: Front—25 mm. Rear—25 mm.
- STABILIZER BAR: Front—1.14 in. on 2-wheel drive and 1.26 in. on 4-wheel drive.
- STEERING: Integral power. Ratio: 17.5:1.
- SUSPENSION: Front—Independent with computer-selected coil springs on 2-wheel drive and torsion bars on 4-wheel drive. Rear—Semi-Elliptic two-stage multi-leaf springs.
- TOW HOOKS: Front-mounted on the 4-wheel drive.
- TRANSMISSION: 5-speed manual with overdrive.

EXTERIOR

- AIR DAM: Black.
- BODYSIDE MOLDINGS: Black with bright insert.
- BUMPER: **Color-keyed** front and rear with black rub strips. Front includes integral parking lamps.
- COLORS: Choice of ten in a solid paint scheme. See Color and Trim specifications for details.
- DOOR HANDLES: Black finish.
- ENGINE COMPARTMENT LAMP: Located under the hood at rear.
- GRILLE: **Black** molded plastic with **matching** headlamp/side marker lamp bezels.
- HEADLAMPS: Single rectangular halogen.
- HORN: Single electric high-note.
- INSULATION: Hood insulation and cowl-to-fender seals.
- MIRRORS: Black RH and LH below-eye-line type. Head size is 6.0" x 7.0".
- TIRES: Five P205/75R15 all-season steel-belted radials.
- TRIM: **Black** taillight trim with black applique.
- WHEEL OPENING MOLDINGS: **Black**.
- WHEELS: **Five 15" x 7" cast aluminum painted silver on the 2-wheel drive and 4-wheel drive. Includes black vent and lug nut pockets and a "4 x 4" logo on 4-wheel drive.**

INTERIOR

- ARMRESTS: RH and LH padded integral with door panels.
- CIGARETTE LIGHTER: Located on instrument panel. Includes ashtray light.
- COAT HOOKS: RH and LH.
- COLORS: Choice of Blue, Garnet, Charcoal or Gray.
- CONVENIENCE TRAY
- DOME LAMPS: Front and rear with bright trim and switches in RH and LH door jambs. Switches also operate a door-courtesy lamp.
- DOOR PANELS: **Deluxe** cloth upper insert, carpeted lower insert with map pocket plus coin holder in LH door.
- DOOR SILL PLATE: Black. Also, endgate scuff plate is color-keyed.
- FLOOR CONSOLE: Located between front bucket seats. Includes latch and a cup holder.
- FLOOR COVERING: Color-keyed front and rear floor mats over full floor carpeting.
- GAUGES: Including speedometer, odometer, trip odometer, fuel level, voltmeter, temperature and oil pressure gauges and additional telltale lights.
- GLOVE BOX: Includes locking door and light.
- HEADLAMP WARNING BUZZER: Headlamps on.
- HEADLINER: Full-foam with color-keyed cloth cover. Includes grab handles over all outboard passenger seating positions.
- HEATER: Deluxe with windshield and side window defoggers.
- INSULATION: Provided on the dash panel, doors, roof, and floor.
- KICK PANELS: Color-keyed cowl kick, carpeted lower rear quarter and endgate panels. **Deluxe Cloth trim panel inserts.**
- MIRRORS: 10-inch rearview with dual reading lamps. Also, RH visor mirror.
- RADIO: Electronically-tuned AM with two 4" x 6" front dash standard speakers, digital clock and fixed mast antenna. (Please refer to the brochure in RPO Detail for further information).
- SEATS: High-back reclining buckets with *folding backs* and **Deluxe Cloth** or Ultra-soft Leather trim. RH seat includes easy-entry feature.
- SPARE TIRE/ WHEEL: Full-size with steel wheel located at left rear. Includes spare tire cover.
- STEERING WHEEL: **Leather wrapped** 4-spoke steering wheel.
- SUNSHADES: Padded, color-keyed RH and LH.
- TOOLS: Mechanical jack and wheel wrench located at left rear storage compartment.
- WINDOWS: Tinted glass.

S-10 BLAZER

TAHOE (4-DOOR)

(YC2)

The Tahoe trim is the base trim level for the S-10 Blazer 4-door. It is designed to offer truck buyers a high level of comfort and convenience features.

The following features are standard.

POWERTRAIN/CHASSIS

- ALTERNATOR: 100 amp Delcotron.
- BATTERY: 525 amp CCA.
- BRAKES: Power-assisted; front disc, rear drum. Includes 4-wheel anti-lock brake system.
- ENGINE: 4.3-liter V6 EFI. 160 net HP @ 4000 rpm and 230 lb. ft. of net torque @ 2800 rpm.
- EXHAUST: Single.
- FRAME: All-welded ladder-type, channel design and boxed front-end section.
- FUEL TANK: 20-gallon (approx.).
- REAR AXLE: Hypoid, Semi-Floating. Ratio: 3.08:1.
- SHOCK ABSORBERS: Front—32 mm. Rear—32 mm.
- STABILIZER BAR: Front—1.14 in. on 2-wheel drive and 1.26 in. on 4-wheel drive.
- STEERING: Integral Power. Ratio: 17.5:1.
- SUSPENSION: Front—Independent with computer-selected coil springs on 2-wheel drive and torsion bars on 4-wheel drive. Rear—Semi-Elliptic two-stage multi-leaf springs.
- TOW HOOKS: Front-mounted on the 4-wheel drive model.
- TRANSMISSION: 5-speed manual with overdrive.

EXTERIOR

- AIR DAM: Black.
- BODY SIDE MOLDINGS: Black with bright insert.
- BUMPER: Front and rear chromed with black rub strips. Front includes integral parking lamps.
- COLORS: Choice of ten in a solid paint scheme. See Color and Trim specifications for details.
- DOOR HANDLES: Black finish.
- ENGINE COMPARTMENT LAMP: Located under the hood at rear.
- GRILLE: Chrome and silver colored molded plastic with headlamp/side marker lamp bezels.
- HEADLAMPS: Single rectangular halogen.
- HORN: Single electric high-note.
- INSULATION: Hood insulation and cowl-to-fender seals.
- MIRRORS: Black RH and LH below-eye-line type. Head size is 6.0" x 7.0".
- TIRES: Five P205/75R15 all-season steel-belted radials.
- TRIM: Bright taillight trim with black applique.
- WHEEL OPENING MOLDINGS: Bright.
- WHEELS: Five 15" x 7" Rally with black center insert and gold "bow tie", black rims with silver colored coined surfaces and trim rings on the 2-wheel drive. Five 15" x 6" steel wheels painted silver with trim rings on the 4-wheel drive.

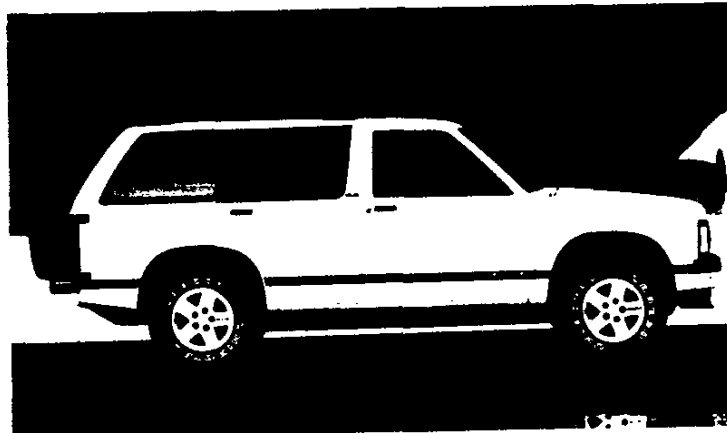
INTERIOR

- ARMRESTS: RH and LH padded integral with the door panels.
- CIGARETTE LIGHTER: Located on instrument panel. Includes ashtray light.
- COAT HOOKS: RH and LH.
- COLORS: Choice of Blue, Garnet, Charcoal or Gray.
- CONVENIENCE TRAY
- DOME LAMPS: Front and rear with bright trim switches in RH and LH door jambs. Switches also operate a door-courtesy lamp.
- DOOR PANELS: Special Custom Cloth upper insert, carpeted lower insert with map pocket plus coin holder in LH door.
- DOOR SILL PLATE: Black. Also, endgate scuff plate is color-keyed.
- FLOOR COVERING: Color-keyed front and rear floor mats over full floor carpeting.
- GAUGES: Including speedometer, odometer, trip odometer, fuel level, voltmeter, temperature and oil pressure gauges and additional telltale lights.
- GLOVE BOX: Includes locking door.
- HEADLAMP WARNING BUZZER: Headlamps on.
- HEADLINER: Full-foam headliner with color-keyed cloth cover. Includes grab handles over all outboard passenger seating positions.
- HEATER: Deluxe with windshield and side window defoggers.
- INSULATION: Provided on the dash panel, doors, roof, and floor.
- KICK PANELS: Color-keyed cowl kick, carpeted lower rear quarter and endgate panels.
- MIRRORS: 10-inch rearview with dual reading lamps. Also, RH visor mirror.
- RADIO: Electronically-tuned AM with two 4" x 6" front dash standard speakers, digital clock and fixed mast antenna. (Please refer to the Delco Electronics brochure in RPO Detail for further information).
- SEATS: Front—3-passenger bench in Special Custom Cloth with 3-position outboard head restraints. Rear—3-passenger folding bench on the 4-wheel drive.
- SPARE TIRE/ WHEEL: Full-size with steel wheel located at left rear. Includes spare tire cover.
- STEERING WHEEL: 4-spoke deluxe black.
- SUNSHADES: Padded, color-keyed RH and LH.
- TOOLS: Mechanical jack and wheel wrench located at left rear storage compartment.
- WINDOWS: Tinted glass.

SPORT (4-DOOR) (YC3)

The Sport trim level is an optional trim level for the S-10 Blazer 4-door. It is designed to offer truck buyers an increased level of comfort and convenience features compared to the Tahoe trim.

The following features are standard. Bold type denotes equipment in addition to or replacing that of the Tahoe trim level.



Some equipment shown may be optional or extra cost.

POWERTRAIN/CHASSIS

- ALTERNATOR: 100 amp Delcotron.
- BATTERY: 525 amp CCA.
- BRAKES: Power-assisted: front disc, rear drum. Includes 4-wheel anti-lock brake system.
- ENGINE: 4.3-liter V6 EFI. 160 net HP @ 4000 rpm and 230 lb. ft. of net torque @ 2800 rpm.
- EXHAUST: Single.
- FRAME: All-welded ladder-type, channel design and boxed front-end section.
- FUEL TANK: 20-gallon (approx.).
- REAR AXLE: Hypoid, Semi-Floating. Ratio: 3.08:1.
- SHOCK ABSORBERS: Front—32 mm. Rear—32 mm.
- STABILIZER BAR: Front—1.14 in. on 2-wheel drive and 1.26 in. on 4-wheel drive.
- STEERING: Integral power ratio: 17.5:1.
- SUSPENSION: Front—Independent with computer-selected coil springs on 2-wheel drive and torsion bars on 4-wheel drive. Rear—Semi-Elliptic two-stage multi-leaf springs.
- TOW HOOKS: Front-mounted on 4-wheel drive.
- TRANSMISSION: 5-speed manual with overdrive.

EXTERIOR

- AIR DAM: Black.
- BODY SIDE MOLDINGS: Black with bright insert.
- BUMPER: **Color-keyed** front and rear with black rub strips. Front includes integral parking lamps.
- COLORS: Choice of ten in a solid paint scheme. See Color and Trim specifications for details.
- DOOR HANDLES: Black finish.
- ENGINE COMPARTMENT LAMP: Located under the hood at rear.
- GRILLE: **Black** molded plastic with **matching** headlamp/side marker lamp bezels.
- HEADLAMPS: Single rectangular halogen.
- HORN: Single electric high-note.
- INSULATION: Hood insulation and cowl-to-fender seals.
- MIRRORS: Black RH and LH below-eye-line type. Head size is 6.0" x 7.0".
- TIRES: Five P205/75R15 all-season steel-belted radials.
- TRIM: **Black** taillight trim with black applique.
- WHEEL OPENING MOLDINGS: **Black**.
- WHEELS: **Five 15" x 7" cast aluminum painted silver on 2-wheel and 4-wheel drive. Includes black vent and lug nut pockets and a "4 x 4" logo on 4-wheel drive.**

INTERIOR

- ARMRESTS: RH and LH padded integral with the door panels.
- CIGARETTE LIGHTER: Located on instrument panel. Includes ashtray light.
- COAT HOOKS: RH and LH.
- COLORS: Choice of Blue or Charcoal.
- CONVENIENCE TRAY
- DOME LAMPS: Front and rear with bright trim and switches in RH and LH door jams. Switches also operate a door-courtesy lamp.
- DOOR PANELS: **Deluxe** Cloth upper insert, carpeted lower insert with map pocket plus coin holder in LH door.
- DOOR SILL PLATE: Black. Also, endgate scuff plate is color-keyed.
- FLOOR CONSOLE: **Located between front bucket seats. Includes latch and cup holder.**
- FLOOR COVERING: Color-keyed front and rear floor mats over full floor carpeting.
- GAUGES: Including speedometer, odometer, trip odometer, fuel level, voltmeter, temperature and oil pressure gauges and additional telltale lights.
- GLOVE BOX: Includes locking door.
- HEADLAMP WARNING BUZZER: Headlamps on.
- HEADLINER: Full-foam with color-keyed cloth cover. Includes grab handles over all outboard passenger seating positions.
- HEATER: Deluxe with windshield and side window defoggers.
- INSULATION: Provided on the dash panel, doors roof or floor.
- KICK PANELS: Color-keyed cowl kick, carpeted lower rear quarter and endgate panels. **Deluxe Cloth trim panel inserts.**
- MIRRORS: 10-inch rearview with dual reading lamps. Also, RH visor mirror.
- RADIO: Electronically-tuned AM with two 4" x 6" front dash standard speakers, digital clock and fixed mast antenna. (Please refer to the Delco Electronics brochure in RPO Detail for further information).
- SEATS: **Front—2-passenger high-back reclining buckets in Deluxe Cloth.** Rear—3 passenger folding bench on the 4-wheel drive.
- SPARE TIRE/ WHEEL: Full-size with steel wheel located at left rear. Includes spare tire cover.
- STEERING WHEEL: **Deluxe, 4-spoke leather wrapped steering wheel.**
- SUNSHADES: Padded, color-keyed RH and LH.
- TOOLS: Mechanical jack and wheel wrench located at left rear storage compartment.
- WINDOWS: Tinted glass.

TAHOE LT (4-DOOR)

(YC9)

The Tahoe LT trim is the luxury trim level for the S-10 Blazer 4-door. It is designed to offer truck buyers a high level of comfort and convenience features.

The following features are standard. Bold type denotes equipment in addition to or replacing that of the Tahoe 4-door trim.



Some equipment shown may be optional or extra cost.

POWERTRAIN/CHASSIS

- ALTERNATOR: 100 amp Delcotron.
- BATTERY: 525 amp CCA.
- BRAKES: Power-assisted; front disc, rear drum. Includes 4-wheel anti-lock brake system.
- ENGINE: 4.3-liter V6 EFI. 160 net HP @ 4000 rpm and 230 lb. ft. of net torque @ 2800 rpm.
- EXHAUST: Single.
- FRAME: All-welded ladder-type, channel design and boxed front-end section.
- FUEL TANK: 20-gallon (approx.).
- REAR AXLE: Hypoid, Semi-Floating. Ratio: 3.08:1 on 2-wheel drive and 3.42:1 on 4-wheel drive.
- SHOCK ABSORBERS: Front—32 mm. Rear—32 mm.
- STABILIZER BAR: Front—1.14 in. on 2-wheel drive and 1.26 in. on 4-wheel drive.
- STEERING: Integral Power. Ratio: 17.5:1.
- SUSPENSION: Front—Independent with computer-selected coil springs on 2-wheel drive and torsion bars on 4-wheel drive. Rear—Semi-Elliptic two-stage multi-leaf springs.
- TOW HOOKS: Front-mounted on the 4-wheel drive model.
- TRANSMISSION: 5-speed manual with overdrive.

EXTERIOR

- AIR DAM: Black.
- BODY SIDE MOLDINGS: Black with bright insert.
- BUMPER: **Color-keyed to lower body** with black rub strips. Front includes integral parking lamps.
- COLORS: Choice of **five** in a **two-tone** paint scheme which includes a lower body multi-shaded stripe. See Color and Trim specifications for details.
- DOOR HANDLES: Black finish.
- ENGINE COMPARTMENT LAMP: Located under the hood at rear.
- GRILLE: Chrome and silver colored molded plastic with headlamp/side marker lamp bezels.
- HEADLAMPS: Single rectangular halogen.
- HORN: Single electric high-note.
- INSULATION: Hood insulation and cowl-to-fender seals.
- MIRRORS: Black RH and LH below-eye-line type. Head size is 6.0" x 7.0".
- TIRES: Five P205/75R15 **WL** all-season steel-belted radials on 2-wheel drive and **five P235/75R15 WL all-season steel-belted radials on 4-wheel drive.**
- TRIM: Bright taillight trim with black applique.
- WHEEL OPENING MOLDINGS: Bright.
- WHEELS: Five 15" x 7" **cast aluminum with argent color on 2-wheel drive and cast aluminum on 4-wheel drive.**

INTERIOR

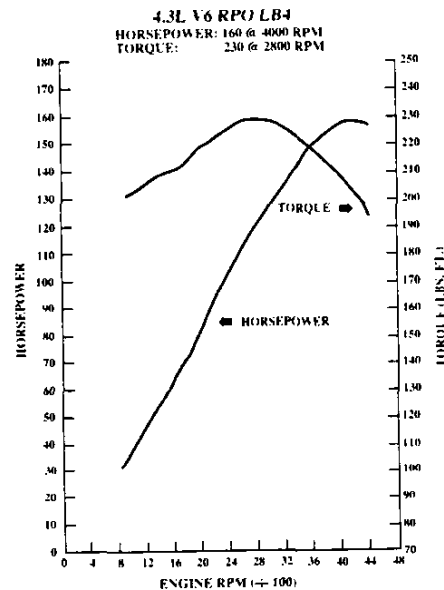
- ARMRESTS: RH and LH padded integral with the door panels.
- CIGARETTE LIGHTER: Located on instrument panel. Includes ashtray light.
- COAT HOOKS: RH and LH.
- COLORS: Choice of **Beige**, Charcoal or Gray.
- CONVENIENCE TRAY
- DOME LAMP: Front and rear with bright trim switches in RH and LH door jambs. Switches also operate a door-courtesy lamp.
- DOOR LOCKS: **Power operated.**
- DOOR PANELS: **Color-keyed leather** upper insert, carpeted lower insert with map pocket plus coin holder in LH door.
- DOOR SILL PLATE: Black. Also, endgate scuff plate is color-keyed.
- FLOOR CONSOLE: Located between front bucket seats. Includes latch and beverage holder.
- FLOOR COVERING: Color-keyed front and rear floor mats over full floor carpeting.
- GAUGES: Including speedometer, odometer, trip odometer, fuel level, voltmeter, temperature and oil pressure gauges and additional telltale lights.
- GLOVE BOX: Includes locking door.
- HEADLAMP WARNING BUZZER: Headlamps on.
- HEADLINER: Full-foam headliner with color-keyed cloth cover. Includes grab handles over all outboard passenger seating positions.
- HEATER: Deluxe with windshield and side window defoggers.
- INSULATION: Provided on the dash panel, doors, roof, and floor.
- KICK PANELS: Color-keyed cowl kick, carpeted lower rear quarter and endgate panels.
- MIRRORS: 10-inch rearview with dual reading lamps. Also, RH visor mirror.
- RADIO: Electronically-tuned AM with two 4" x 6" front dash standard speakers, digital clock and fixed mast antenna. (Please refer to the Delco Electronics brochure in RPO Detail for further information).
- SEATS: **Ultra-soft leather front bucket seats and folding rear bench seat with center folding armrests.**
- SPARE TIRE/WHEEL: Full-size with steel wheel located at left rear. Includes spare tire cover.
- STEERING WHEEL: Deluxe 4-spoke leather wrapped.
- SUNSHADES: Padded, color-keyed RH and LH.
- TOOLS: Mechanical jack and wheel wrench located at left rear storage compartment.
- WINDOWS: **Power operated**; tinted glass.

HORSEPOWER AND TORQUE RATINGS

ENGINE	4.3L V6
RPO CODE	LB4
SAE NET HORSEPOWER @ RPM	160 @ 4000
SAE NET TORQUE Lb. Ft. @ RPM	230 @ 2800
FUEL SYSTEM	EFI
CLUTCH SIZE (in.)	11.02
STD. BATTERY Cold Cranking Amps @ 0° F	525

TRANSFER CASE

MODEL	NEW PROCESS 231
MODEL AVAILABILITY	4-wheel drive
RATIOS: Hi Range Lo Range	1.00:1 2.72:1
LEVER POSITIONS	4-Lo (All-wheel Underdrive) N (Neutral) 2-Hi (Rear-wheel Drive) 4-Hi (All-wheel Drive)
LEVER LOCATION	Rear of Transmission at Center of Floor
OIL CAPACITY (pints)	2.2



TRANSMISSION

MANUAL

AUTOMATIC

MODEL	MANUAL 5-SPEED w/ OVERDRIVE	AUTOMATIC 4-SPEED w/OVERDRIVE (4L60)
RPO CODE	MM5	MX0
SYNCHRONIZED SPEEDS	1/2/3/4/5	—
GEAR RATIOS		
First	4.02	3.06
Second	2.32	1.63
Third	1.40	1.00
Fourth	1.00	.70
Fifth	.83	—
Reverse	3.74	2.29
GEAR TYPE	—	Planetary
Forward	Helical	—
Reverse	Spur	—
Center Distance (mm.)	85	—
TORQUE CONVERTER	—	Pump/Stator/Turbine Automatic
Element Types	—	—
Lock-up Clutch	—	—
LUBRICANT CAPACITY (pints)		
Oil	3.7	—
Dry Fill	—	19
Refill	—	10

AXLES	REAR	FRONT—FOUR-WHEEL DRIVE
MAKE AND CAPACITY (lbs.)	GM 2900	GM 2400
PINION & RING GEARS	Hypoid	
Type	Hypoid	
Ratio	3.08	3.42
Pinion Teeth	13	12
Ring Gear Teeth	40	41
Ring Gear Diameter (in.)	7.6	7.6
DIFFERENTIAL	2-Pinion Tapered Roller	
Type	2-Pinion Tapered Roller	
Bearings, Type	—	
AXLE SHAFTS	Semi-Floating Integral Shaft and Drive Flange	
Type	Independent	
Min. Diameter (in.)	—	
HOUSING @ SPRING SEAT	2.69 x .116-.175	
Section Diameter and Thickness (in.)	—	
LUBRICANT CAPACITY (pints)	3.9	2.6

KEY: S Standard O Optional **Bold**—Not Available w/High Altitude Emissions

MODEL	ENGINE	TRANSMISSION		AXLES		GVWR
		MANUAL 5-SPEED (MM5)	AUTO 4-SPEED (MX0)	ECONOMY—POWER		
				3.08 ³	3.42	
TWO AND FOUR DOOR MODELS						
S-10 2-DOOR BLAZER 4X2 CS10516/E55	4.3L V6 (LB4)	S	O	S ¹	O	4350
S-10 2-DOOR BLAZER 4X4 CT10516/E55	4.3L V6 (LB4)	S	O	S ¹	O ²	4700
S-10 4-DOOR BLAZER 4X2 CS10506/E55	4.3L V6 (LB4)	S	O	S ¹	O	4850
S-10 4-DOOR BLAZER 4X4 CT10506/E55	4.3L V6 (LB4)	S	O	S ¹	O ²	5100

¹N/A G80 Locking Differential. ²Standard Ratio w/High Altitude Emissions. ³N/A w/OEB P235/75R15 Tires.

STD SUSPENSION

1992
S-10 BLAZER

		TWO DOOR MODELS		FOUR DOOR MODELS	
MODEL		S-10 2-DOOR BLAZER	S-10 2-DOOR BLAZER	S-10 4-DOOR BLAZER	S-10 4-DOOR BLAZER
MODEL NUMBER		CS10516/E55	CT10516/E55	CS10506/E55	CT10506/E55
STANDARD SUSPENSION					
PAYLOAD (Maximum lbs.) ¹		1169	1215	1481	1388
GVWR (lbs.)		4350	4700	4850	5100
GAWR (lbs.) Front		2200	2400	2200	2400
Rear		2600	2700	2900	2900
FRONT SUSPENSION					
Type		Independent Coil Spring	Independent Driving Axle Torsion Bar	Independent Coil Spring	Independent Driving Axle Torsion Bar
Standard Spring Capacity (Total lbs.)		2200	2400	2200	2400
Front Shock Absorbers Piston Diameter (mm)		25	25	32	32
Front Stabilizer Bar Diameter (in.)		1.14	1.26	1.14	1.26
REAR SUSPENSION					
Type		Semi-Elliptic 2-Stage Multi-Leaf	Semi-Elliptic 2-Stage Multi-Leaf	Semi-Elliptic 2-Stage Multi-Leaf	Semi-Elliptic 2-Stage Multi-Leaf
Standard Spring Capacity (Total lbs.)		2700	2700	2900	2900
Leaves Per Spring		3	3	3	3
Leaf Total Thickness (in.)		1.33	1.33	1.33	1.33
Rear Shock Absorbers Piston Diameter (mm)		25	25	32	32
FRONT AXLE					
Type		Independent	Independent	Independent	Independent
Make		—	GM	—	GM
Maximum Capacity (lbs.)		2200	2400	2200	2400
Standard Hub Locks		—	Differential Lockout	—	Differential Lockout
Pinion/Ring Gear Type		—	Hypoid	—	Hypoid
REAR AXLE					
Type		Semi-Floating	Semi-Floating	Semi-Floating	Semi-Floating
Make		GM	GM	GM	GM
Maximum Capacity (lbs.)		2900	2900	2900	2900
Pinion/Ring Gear Type		Hypoid	Hypoid	Hypoid	Hypoid
STANDARD TIRES					
Capacity (lbs.) each					
Front/Rear		1452	1452	1452	1452
Inflation (psi) maximum		35	35	35	35
Revolutions per mile @ 45 mph		769	769	769	769
WHEELS					
Size (in.) Front/Rear		15.0 x 6.0	15.0 x 6.0	15.0 x 7.0	15.0 x 6.0
Capacity (lbs.) each		1453	1453	1453	1453
Bolt Ho.es		5	5	5	5
Bolt Circle Diameter (in.)		4.75	4.75	4.75	4.75
Rim Width (in.)		6.0	6.0	7.0	6.0
Offset (mm)		0	50	-6.4	50

¹Based on curb weight. ²SBR P205/75R15 WL on Tahoe LT ³SBR P235/75R15 WL on Tahoe LT.

S-10 BLAZER

KEY: N/A - Not Available BW - Blackwall WOL - White Outline Lettered
 AS - All-Season ON-OFF - On-Off Road
 SBR - Steel-Belted Radial Ply WL - White Lettered

TWO DOOR MODELS

TIRES

SIZE	TYPE	RPO	CONDITION	PLY	LOAD RANGE	CAPACITY (lbs. ea.)	INFLATION (psi) max.	REV. PER mile @ 45 mph
P205/75R15	AS SBR BW	QCE	STD	1	B	1452	35	768
P205/75R15	AS SBR WL	QCF	OPT	1	B	1452	35	768
P205/75R15	ON-OFF SBR WOL	QJL	OPT	2 Poly 2 Steel	B	1452	35	769
P235/75R15	ON-OFF SBR WOL	QEB	OPT (4-wheel drive only)	2 Poly 2 Steel	B	1843	35	716

WHEELS¹

SIZE (in.)	TYPE	RPO	TRIM LEVEL	BOLT HOLES	BOLT CIRCLE dia. (in.)	CAPACITY (lbs. ea.)	OFFSET (mm.)
15.0 x 6.0	STEEL (Painted silver on 2-wheel drive and 4-wheel drive)	—	Standard S-10 YC2 Tahoe(4-wheel drive only)	5	4.75	1453	0
15.0 x 7.0	RALLY (Black disc & silver colored coined surfaces)	ZJ7	YC2 Tahoe (2-wheel drive only) Opt. w/Standard S-10 (2-wheel Drive only)	5	4.75	1453	-6.4
15.0 x 7.0	CAST ALUMINUM (silver)	N60	YC3 Sport (2-wheel drive only) Opt. w/Standard S-10 and YC2 Tahoe (2-wheel drive only)	5	4.75	1453	-6.4
15.0 x 7.0	CAST ALUMINUM (Black vent, lug nut pockets & 4 x 4 logo)	N90	YC3 Sport (4-wheel drive only) Opt w/Std S-10 and YC2 Tahoe (4-wheel drive only)	5	4.75	1453	50

FOUR DOOR MODELS

TIRES

SIZE	TYPE	RPO	CONDITION	PLY	LOAD RANGE	CAPACITY (lbs. ea.)	INFLATION (psi) max.	REV. PER mile @ 45 mph
P205/75R15	AS SBR BW	QCE	STD (except YC9 Tahoe LT)	1	B	1452	35	768
P205/75R15	AS SBR WL	QCF	OPT STD on Tahoe LT (2-wheel drive only)	1	B	1452	35	768
P205/75R15	ON-OFF SBR WOL	QJL	OPT N/A Tahoe LT	2 Poly 2 Steel	B	1452	35	769
P235/75R15	AS SBR WL	QFN	STD on Tahoe LT (4-wheel drive only) OPT (4-wheel drive only)	2 Poly 2 Steel	STD	1843	35	718
P235/75R15	ON-OFF SBR WOL	QEB	OPT (4-wheel drive only) N/A YC9 Tahoe LT	2 Poly 2 Steel	B	1843	35	716

WHEELS¹

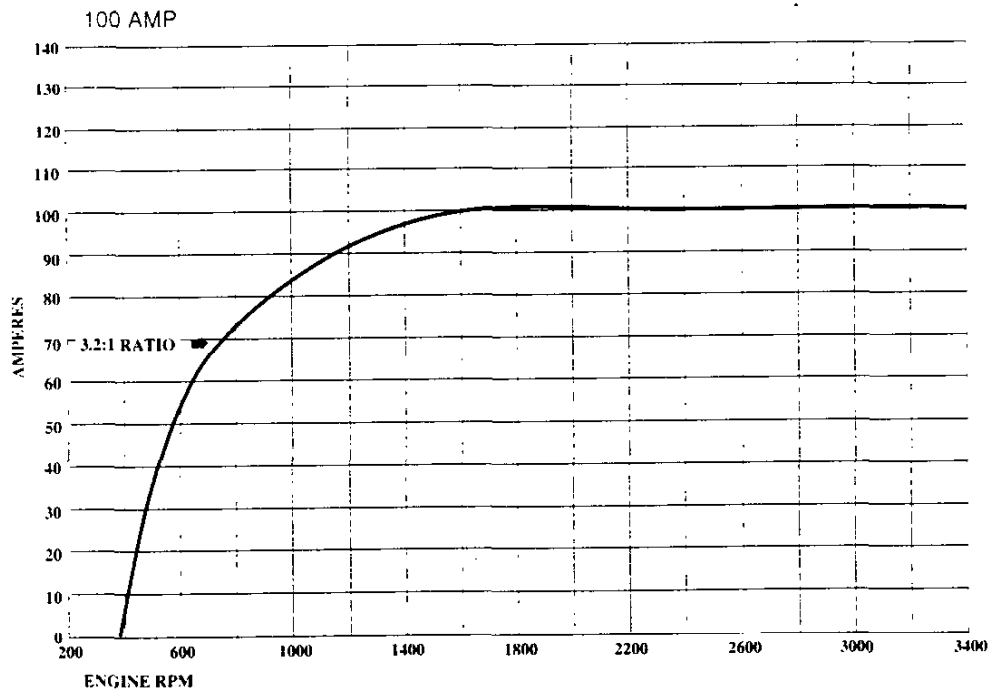
SIZE (in.)	TYPE	RPO	TRIM LEVEL	BOLT HOLES	BOLT CIRCLE dia. (in.)	CAPACITY (lbs.) ea.	OFFSET (mm.)
15.0 x 6.0	STEEL (Painted silver)	—	YC2 Tahoe (4-wheel drive only)	5	4.75	1453	50
15.0 x 7.0	RALLY (Painted black w/silver-colored coined surfaces)	—	YC2 Tahoe (2-wheel drive only)	5	4.75	1453	-6.4
15.0 x 7.0	CAST ALUMINUM (Silver)	N60	YC3 Sport and YC9 Tahoe LT (2-wheel drive only) OPT w/YC2 Tahoe (2-wheel drive only)	5	4.75	1453	-6.4
15.0 x 7.0	CAST ALUMINUM (Black vent, lugnut pockets & 4 x 4 logo)	N90	YC3 Sport (4-wheel drive only) OPT w/YC2 Tahoe (4-wheel drive only)	5	4.75	1453	50
15.0 x 7.0	CAST ALUMINUM	5P2	YC9 Tahoe LT (4-wheel drive only)	5	4.75	1453	50

¹All Spare Wheels are Steel

		TWO DOOR MODELS		FOUR DOOR MODELS	
MODEL		S-10 2-DOOR BLAZER	S-10 2-DOOR BLAZER	S-10 4-DOOR BLAZER	S-10 4-DOOR BLAZER
MODEL NUMBER		CS10516/E55	CT10516/E55	CS10506/E55	CT10506/E55
FRAME					
Side Rail Dimensions Width (in.)		2.28	2.28	2.28	2.28
Depth (in.)		5.00	5.00	5.00	5.00
Thickness (in.)		.118	.118	.118	.118
Section Modulus Rails only		1.78	1.78	1.78	1.78
RBM of Frame		69,420	69,420	69,420	69,420
Yield Strength (psi)		39,000	39,000	39,000	39,000
Width Over Rails Front (in.)		30.9	30.9	30.9	30.9
Rear (in.)		40.35	40.35	40.35	40.35
Overall Length of Rail (in.)		162.46	162.46	168.96	168.96
STEERING					
Type		Fixed Integral Power	Fixed Integral Power	Fixed Integral Power	Fixed Integral Power
Steering Ratio		17.5:1	17.5:1	17.5:1	17.5:1
Turning Diameter Curb-to-Curb (ft.)		34.6	35.4	35.4	37.1
Wall-to-Wall (ft.)		36.4	37.2	37.6	39.1
BRAKES					
GVWR (lbs)		4350	4700	4850	5100
Type		Vac. Power Front Disc/Rear Drum w/ 4-Wheel Anti-Lock System	Vac. Power Front Disc/Rear Drum w/ 4-Wheel Anti-Lock System	Vac. Power Front Disc/Rear Drum w/ 4-Wheel Anti-Lock System	Vac. Power Front Disc/Rear Drum w/ 4-Wheel Anti-Lock System
Booster Diaphragm Diameter (in.)		9.4 x 7.9 Tandem	9.4 x 7.9 Tandem	9.4 x 7.9 Tandem	9.4 x 7.9 Tandem
Front Rotor Size Diameter x Thickness (in.)		10.5 x 1.03	10.5 x 1.03	10.5 x 1.03	10.5 x 1.03
Front Facing Contact Per Axle (sq. in.)		31.68	31.68	31.68	31.68
Rear Drum Size Diameter x Width (in.)		9.5 x 2.0	9.5 x 2.0	9.5 x 2.0	9.5 x 2.0
Rear Facing Contact Per Axle (sq. in.)		63.73	63.73	63.73	63.73
Parking Brake Type		Cable To Rear Wheels	Cable To Rear Wheels	Cable To Rear Wheels	Cable To Rear Wheels

TWO DOOR MODELS		FOUR DOOR MODELS
MODEL	S-10 2-DOOR BLAZER	S-10 4-DOOR BLAZER
MODEL NUMBER	CS10516/E55 - CT10516/E55	CS10506/E55-CT10506/E55
ELECTRICAL		
ENGINE	4.3L V6	4.3L V6
STANDARD BATTERY		
Cold Cranking Amps @ 0°F	525	525
@ -20°F	390	390
Reserve Capacity Minutes @ 80°F	90	90
OPTIONAL BATTERY	UA1	UA1
Cold Cranking Amps @ 0°F	630	630
@ -20°F	470	470
Reserve Capacity Minutes @ 80°F	115	115
STANDARD ALTERNATOR		
Max. Capacity (Amps)	100	100
Max. Watts @ 12 Volts	1200	1200
Nominal Amp @ Idle (approx.)	36	36
Drive Pulley Ratio	3.2:1	3.2:1
Model Number	CS130	CS130

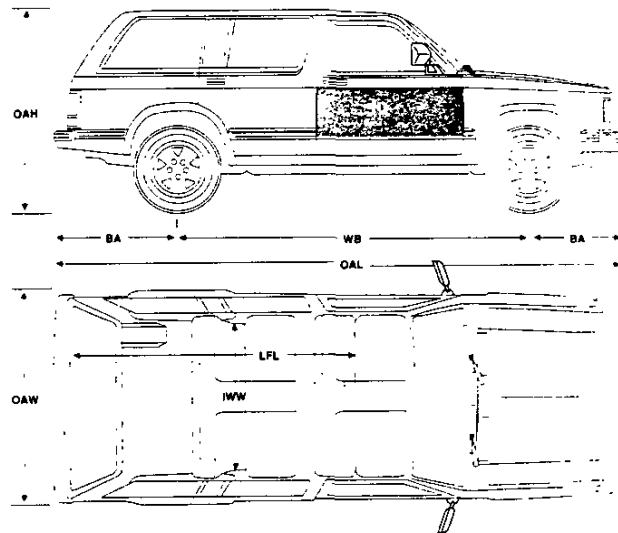
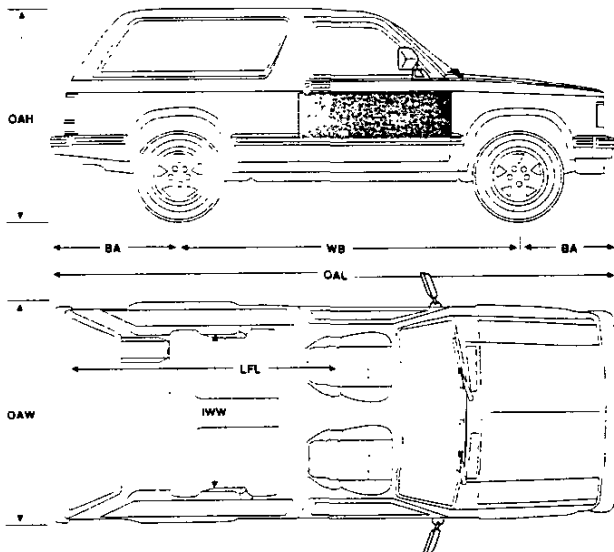
ALTERNATOR CURVES



KEY: **Bold Type** Automatic Transmission Only. Reg. Type Manual and Automatic Transmissions.

TWO AND FOUR-DOOR MODELS	
MODEL	S-10 BLAZER ALL MODELS
MODEL NUMBER	CS10516/E55 -CT10516/E55-CS10506/E55-CT10506/E55
STANDARD COOLING SYSTEM	
ENGINE	4.3LV6
Radiator Thickness (in.)	.93
System Capacity (gal.)	3.01
Fan-No. Blades x Diameter x Pitch (in.)	3 x 18.0 x 2.01
OPTIONAL COOLING SYSTEMS	
ENGINE	4.3LV6
AUTOMATIC TRANSMISSION	MX0
Radiator Thickness (in.)	.93
System Capacity (gal.)	2.99
Fan-No. Blades x Diameter x Pitch (in.)	3 x 18.0 x 2.01
OPT. H.D. RADIATOR	V01
Radiator Thickness (in.)	.93
System Capacity (gal.)	2.98
Fan-No. Blades x Diameter x Pitch (in.)	3 x 18.0 x 2.01
OPT. AIR CONDITIONING	C60
Radiator Thickness (in.)	.93
System Capacity (gal.)	3.0
Fan-No. Blades x Diameter x Pitch (in.)	5 x 19.02 x 2.80
OPT. ENG. OIL COOLER	KC4
Radiator Thickness (in.)	.93
System Capacity (gal.)	2.93
Fan-No. Blades x Diameter x Pitch (in.)	3 x 18.0 x 2.01
OPT. H.D. RADIATOR AND TRANS. OIL COOLER	V02
Radiator Thickness (in.)	1.34
System Capacity (gal.)	2.99
Fan-No. Blades x Diameter x Pitch (in.)	3 x 18.0 x 2.01
OPT. H.D. RADIATOR AND TRANS. OIL COOLER AND ENGINE OIL COOLER	V02 & KC4
Radiator Thickness (in.)	1.34
System Capacity (gal.)	2.93
Fan-No. Blades x Diameter x Pitch (in.)	3 x 18.0 x 2.01

		TWO DOOR MODELS		FOUR DOOR MODELS	
MODEL		S-10 2-DOOR BLAZER	S-10 2-DOOR BLAZER	S-10 4-DOOR BLAZER	S-10 4-DOOR BLAZER
MODEL NUMBER		CS10516/E55	CT10516/E55	CS10506/E55	CT10506/E55
EXTERIOR DIMENSIONS					
BODY					
Wheelbase (in.)	WB	100.5	100.5	107.0	107.0
Overall Length (in.)	OAL	170.3	170.3	176.8	176.8
Overall Height (in.)	OAH	64.1	64.3	64.1	64.3
Maximum Width (in.)	OAW	65.4	65.4	65.4	65.4
Bumper to Axle—Front (in.)	BA	30.6	30.6	30.6	30.6
Rear		39.2	39.2	39.2	39.2
Ground to top of Rear Load Floor (in.)	—	30.9	29.6	30.9	29.6
Ground Clearance	—				
Front (in.)		8.2	7.8	8.2	7.8
Rear (in.)		7.8	8.1	7.8	8.1
SIGN PANEL AREA (in.)	Shaded Area	12 ³ / ₄ x 45	12 ³ / ₄ x 45	12 ³ / ₄ x 45	12 ³ / ₄ x 45



		TWO DOOR MODELS	FOUR DOOR MODELS
MODEL		S-10 2-DOOR BLAZER	S-10 4-DOOR BLAZER
MODEL NUMBER		CS10516/E55 -CT10516/E55	CS10506/E55 CT10506/E55
INTERIOR DIMENSIONS			
Headroom (in.) Front/Rear	HR	39.1/38.7	39.1/38.8
Legroom (in.) Front/Rear	LR	42.5/35.5	42.5/36.5
Shoulder Room (in.) Front/Rear	SR	53.9/56.1	53.9/55.6
Hip Room (in.) Front/Rear	HP	50.5/37.5	50.5/52.6
Interior Width (in.) Between Wheelhousings	IWW	38.4	38.4
Cargo Volume w/Rear Seat Up (cu. ft.)	CV	28.1	35.2
Cargo Volume w/ Rear Seat Folded (cu. ft.)	CV	67.3	74.3
Load Floor Length w/Rear Seat (in.) at Belt/Floor	LFL	26.0/31.8	32.5/38.5
Load Floor Length w/Rear Seat Folded (in.) at Belt/Floor	LFL	62.2/68.6	68.7/76.1
Cargo Area Width w/ Rear Seat Up (in.)	—	53.4	53.4
Cargo Area Height w/ Rear Seat Up (in.)	—	35.0	35.0
FUEL TANK			
Std. Tank Nominal (gal.) approx.		20	20
Location of Tank		Inboard LH Frame Rail	Inboard LH Frame Rail
Location of Filler		Left Side	Left Side

S-10 BLAZER

KEY S - Standard
 O - Optional
 — Not Available

1. S-10 2-DOOR BLAZER 4X2 (CS10516/E55)
 2. S-10 2-DOOR BLAZER 4X4 (CT10516/E55)
 3. S-10 4-DOOR BLAZER 4X2 (CS10506/E55)
 4. S-10 4-DOOR BLAZER 4X4 (CT10506/E55)

OPTION	CODE	DESCRIPTION	RESTRICTIONS	MODELS			
				2 DOOR MODELS		4 DOOR MODELS	
				1	2	3	4
AIR CONDITIONING	C60	Incls. V01 Cooling w/o V02 Cooling or KC4 Cooling		O	O	O	O
AIR DAM WITH FOG LAMPS	ANL	Switch on Cluster	2-wheel drive only	O	—	O	—
AXLE, REAR	G80	Locking Differential	Reqs Optional Axle Ratio	O	O	O	O
BATTERY	UA1	Heavy-Duty, 630 Cold Cranking Amps Delco Freedom; Incl w/V10 Cold Climate		O	O	O	O
CARRIER, LUGGAGE	ZM4	Black; Incls Rear Window Air Deflector	Chrome Roof Rub Strips on 2-door Models. Black Roof Rub Strips on 4-door Models	O	O	O	O
CARRIER, TIRE OUTSIDE SPARE	P16	Incls Exterior Cover; Recommended for QEB Tires	Must order PNV or P16 N/A w/PNV	O	O	O	O
	PNV	PNV Carrier Not Desired	N/A w/P16 carrier	O	O	O	O
COLD CLIMATE PACKAGE	V10	Incls UA1 Battery, Engine Block Heater, Special Insulation and Anti-freeze Protection to -32°		O	O	O	O
CONSOLE	D55	Incl w/YC2 Tahoe or YC3 Sport	Reqs AV5 Bucket Seats	O	O	O	O
COOLING SYSTEM H.D. Engine Oil Cooler	KC4	Integral in Radiator	N/A V01 Cooling. Req'd w/Z82 Trailing	O	O	O	O
H.D. Radiator	V01	Incl w/C60 Air and Z72 Trailing	N/A V02 or KC4 Cooling	O	O	O	O
Radiator and Transmission Oil Cooler	V02	Integral in Radiator	Reqs MX0 Trans	O	O	O	O
CONVENIENCE PACKAGE Driver's	ZM7	Incls Comfortilt Steering and Intermittent Wipers		O	O	O	O
Rear Window	ZM8	Incls Rear Window Defogger and Power Tailgate Release		O	O	O	O
Operating	ZQ2	Incls Power Door Locks and Power Windows		O	O	O	O
ENGINES	LB4	(See Powertrains)		S	S	S	S
FLOOR COVERING Full-Floor, Rubber Charcoal	BG9	Replaces Carpeting	N/A w/YC2 Tahoe or YC3 Sport. B32 or B33 Mats	O	O	—	—
Mats, Removable, Color-Keyed, Front	B32	Incl w/YC2 Tahoe, YC3 Sport, and YC9 Tahoe LT	N/A w/BG9	O	O	S	S
Mats, Removable, Color-Keyed, Rear	B33	Incl w/YC2 Tahoe, YC3 Sport, and YC9 Tahoe LT	N/A w/ BG9	O	O	S	S
GAGES, ELECTRONIC	U52	Electronic Readout Voltmeter, Temperature, Oil Pressure, Fuel, Speedometer and Tachometer		O	O	O	O
GLASS Deep Tinted	AJ1	Side and Rear	Reqs ZM8 Conv Package	O	O	O	O
Deep Tinted-Side	AA3	Incl light tinted rear window		O	O	O	O
MIRRORS Exterior, Electric Remote	D48	Single Control on Cluster		O	O	O	O
Lighted Visor, RH and LH	DH6			O	O	O	O
MOLDINGS Wheel Opening, Black	B74	Incl w/YC3 Sport		O	O	O	O

NOTE: Refer to Dealer Order Guide for Updated Option Availability.

OPTIONS

1992
S-10 BLAZER

KEY S - Standard
O - Optional
— Not Available

1. S-10 2-DOOR BLAZER 4X2 (CS10516/E55)
2. S-10 2-DOOR BLAZER 4X4 (CT10516/E55)
3. S-10 4-DOOR BLAZER 4X2 (CS10506/E55)
4. S-10 4-DOOR BLAZER 4X4 (CT10506/E55)

NOTE: Refer to Dealer Order Guide for Updated Option Availability.

OPTION	CODE	DESCRIPTION	RESTRICTIONS	MODELS			
				2 DOOR MODELS		4 DOOR MODELS	
				1	2	3	4
OFF-ROAD SUSPENSION PACKAGE	ZM6	Incls Gas Shocks, Lgr Torsion Bars, Jounce Bumpers, Stabilizer Bar, PO6 Trim Rings	Reqs QEB Tires; N/A F51 Shocks or F60 Suspension	—	O	—	—
PAINT, EXTERIOR		(See Color and Trim)					
Solid	ZY1			S	S	S	S
Special Two-Tone	ZY3		N/Aw/ YC2 Tahoe on 2-door models; N/A on 4-door models	O	O	—	—
Deluxe Two-Tone	ZY4	Paint Break Between Feature Lines	Reqs YC2 Tahoe	O	O	O	O
Custom Two-Tone	ZY8		Reqs D85 stripe; Avail on 4-door only. Std on YC9 Tahoe LT	—	—	O	O
RADIO EQUIPMENT							
Electronically-Tuned AM/FM Stereo Radio w/Seek-Scan, Stereo Cassette Tape and Digital Clock	UM6	14 Presets, Digital Display, two 4" x 6" Front Speakers, two 6" x 9" ERS Rear Speakers, located in the Side Panels on 2-doors and Two 6" Round ERS Rear Speakers in Rear Doors on 4-doors, 28 Watts Total Power Output		O	O	O	O
Electronically-Tuned AM/FM Stereo Radio w/Seek-Scan and Digital Clock	UM7	14 Presets, Digital Display, two 4" x 6" Front Speakers, two 6" x 9" ERS Rear Speakers, located in the Side Panels on 2-doors and Two 6" Round ERS Rear Speakers in Rear Doors on 4-doors, 28 Watts Total Power Output		O	O	O	O
Electronically-Tuned AM Stereo/FM Stereo Radio w/Seek-Scan, Stereo Cassette Tape w/Search-Repeat, Graphic Equalizer and Digital Clock	UX1	14 Presets, Digital Display, two 4" x 6" Front Speakers, two 6" x 9" ERS Rear Speakers, located in the Side Panels on 2-doors and Two 6" Round ERS Rear Speakers in Rear Doors on 4-doors, 28 Watts Total Power Output		O	O	O	O
Electronically-Tuned AM/FM Stereo Radio w/Seek-Scan, Compact Disc Player and Digital Clock	U1C	14 Presets, Digital Display, Two 4" x 6" ERS Front Speakers in Instrument Panel, Two 6" x 9" Coaxial Speakers in Rear Side Panels on 2-doors and Two 6" Round Coaxial Speakers in Rear Doors on 4-doors, 28 Watts Total Power Output		O	O	O	O
Radio Delete	UL5			O	O	O	O
SEATING			Must Order AM7 or YG4 Seat on 2-door Models and on 4-door 2-wheel drive Model				
Rear, Folding; 2-Passenger	AM7	Incls Armrests; 2-door models		O	O	—	—
Rear, Seat; 3-Passenger	AM7	4-door models	Standard on 4-wheel drive	—	—	O	S
Rear Seat Not Desired	YG4		N/A AM7 Seat	O	O	O	—
SHIELD PACKAGE	ZM5	Incls Transfer Case and Front Differential Skid Plates and Steering Linkage and Fuel Tank Shields	4-wheel Drives Only	—	O	—	O
SHOCK ABSORBERS	F51	Front and Rear, Heavy-Duty Incl w/F60 Susp	N/A ZM6 Suspension Equipment	O	O	—	O

1992
S-10 BLAZER

OPTIONS

KEY S - Standard
O - Optional
- Not Available

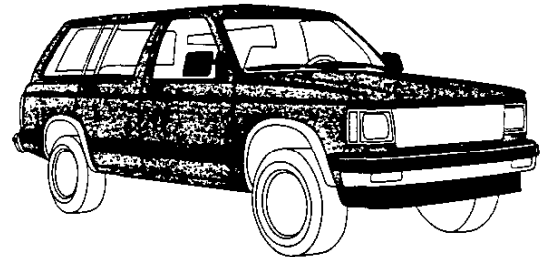
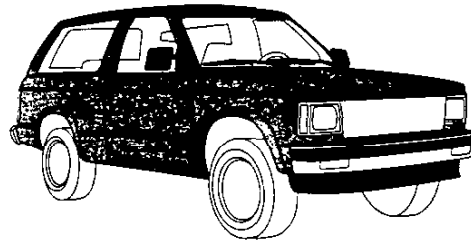
1. S-10 2-DOOR BLAZER 4X2 (CS10516/E55)
2. S-10 2-DOOR BLAZER 4X4 (CT10516/E55)
3. S-10 4-DOOR BLAZER 4X2 (CS10506/E55)
4. S-10 4-DOOR BLAZER 4X4 (CT10506/E55)

NOTE: Refer to Dealer Order Guide for Updated Option Availability.

OPTION	CODE	DESCRIPTION	RESTRICTIONS	MODELS			
				2 DOOR MODELS		4 DOOR MODELS	
				1	2	3	4
SPORT TRIM LEVEL	YC3	(See Trim Levels for Details)		O	O	O	O
SPEED CONTROL, ELECTRONIC	K34	Includes Resume Acceleration Feature		O	O	O	O
SPRINGS Front, Heavy-Duty	F60	Incls F51 Shocks	N/A ZM6 Suspension Pkg	-	O	-	O
STRIPING		(See Color and Trim for Availability)					
	D96	Upper Body	N/A on YC2 Tahoe or ZY1 Paint.	O	O	-	-
	D98	Body Accent		O	O	-	-
TAHOE TRIM LEVEL	YC2	(See Trim Levels for Details)	N/A ZY3 Paint	O	O	S	S
TAHOE LT TRIM LEVEL	YC9	(See Trim Levels for Details)	4-door Models only	-	-	O	O
TIRE EQUIPMENT		(See Wheels and Tires) Incls Front, Rear and Full-Size Steel Spare					
P205/75R15 B/W	QCE	All-Season Steel-Belted Radial	N/A YC9 Tahoe LT	S	S	S	S
P205/75R15 W/L	QCF	All-Season Steel-Belted Radial	N/A YC9 Tahoe LT 4-Wheel Drive	O	O	O ¹	O
P205/75R15 WOL	QJL	On-Off Road Steel-Belted Radial	N/A YC9 Tahoe LT	O	O	O	O
P235/75R15 W/L	QFN	All-Season Steel-Belted Radial	4-Door 4-Wheel Drive Models Only	-	-	-	O ¹
P235/75R15 WOL	QEB	On-Off Road Steel-Belted Radial	Reqs 3.42 Rear Axle N/A YC9 Tahoe LT	-	O	-	O
TRAILERING PACKAGE	Z72	Light-Duty, Incls V01 Cooling, also Incls 5-Lead Wiring Harness, Heavy-Duty Flasher and Deadweight Trailer Hitch	N/A Z82 Trailering Equipment	O	O	O	O
TRANSFER CASE	NR1	Electronic Shift (Eliminates Floor Shifter)	4-wheel Drive Models Only	-	O	-	O
TRAILERING SPECIAL EQUIPMENT	Z82	Heavy-Duty, Incls 7-Lead Wiring Harness, H.D. Flasher, Weight Distribution Platform Hitch	Reqs KC4 Engine Oil Cooler; w/MM5 Trans reqs 3.42 Rear Axle; w/MX0 Trans reqs V02 Cooling	O	O	O	O
TRANSMISSIONS		(See Powertrains)					
5-Speed Manual w/Overdrive	MM5			S	S	S	S
4-Speed Auto w/Overdrive	MX0			O	O	O	O
WHEEL TRIM	P06	Trim Rings Incl w/YC2 Tahoe or ZM6 Suspension and ZJ7 Wheels	N/A YC3 Sport	O	O	S	S
WHEELS		(All Wheel Options Include Base Steel Spare Wheels)					
Aluminum	N60	Silver (2-wheel drive)	Included w/YC3 Sport and YC9 Tahoe LT	O	-	O	-
Aluminum	N90	Cast (4-wheel drive)	Included w/YC3 Sport	-	O	-	O
Aluminum	5P2	Cast (4-wheel drive)	YC9 Tahoe LT only	-	-	-	O ¹
Rally	ZJ7	With Trim Rings	Included w/YC2 Tahoe N/A YC3 Sport	O	-	S	-
WINDOWS	AD5	Sliding Side		O	O	-	-
WINDOW WIPER/WASHER, REAR	C25	Separate Control on Dash	Reqs ZM8 Convenience Group	O	O	O	O

¹Standard on YC9 Tahoe LT.

**SOLID COLOR
(2 AND 4-DOOR)
(ZY1)**



Solid Color Paint (ZY1) is standard with the S-10 (standard), Tahoe (YC2) or Sport (YC3) trim levels on 2-door models, and Tahoe (YC2) or Sport (YC3) trim levels on 4-door models. 4-door models with YC2 include black body side moldings and bright wheel opening moldings. 4-door models with YC3 include black body side moldings and black wheel opening moldings. All painted areas are the same color. The only available Color Code 1/Color Code 2 exterior paint combinations are those displayed in the chart below. Recommended interior colors are indicated by the symbol ●. However, any interior trim color may be ordered if desired by the customer. Also noted in the chart below are optional D98 striping colors. For more information, refer to Seats and Interior Trim pages as well as the Truck Order Guide.

KEY: ●—Recommended Blank—Available but not recommended

EXTERIOR COLORS		STRIPE COLORS	INTERIOR COLORS			
COLOR CODE 1	COLOR CODE 2	D98 (Optional)	Blue	Charcoal	Garnet	Gray
12 Frost White	12 Frost White	Blue Mica	●			
	12 Frost White	Black		●	●	●
19 Midnight Black	19 Midnight Black	Dk Red and Black			●	
	19 Midnight Black	Mint Green Mica		●		
	19 Midnight Black	Silver				●
24 Aspen Blue Metallic	24 Aspen Blue Met.	Silver		●		●
	24 Aspen Blue Met.	Blue Mica	●			
25 Aquamarine Green	25 Aquamarine Gr	Mint Green Mica		●		●
26 Sky Blue	26 Sky Blue	Blue Mica	●			●
44 Forest Green Met.	44 Forest Green	Silver		●		●
47 Royal Blue Metallic	47 Royal Blue Met.	Blue Mica	●			●
	47 Royal Blue Met.	Silver				●
48 Garnet	48 Garnet	Black		●		●
	48 Garnet	Silver				●
	48 Garnet	Red and Dk Red			●	●
72 Apple Red	72 Apple Red	Silver			●	●
	72 Apple Red	Black		●	●	●
90 Steel Gray Met.	90 Steel Gray Met.	Silver		●	●	●

NOTE: S-10 (STANDARD) trim is available in Charcoal or Gray only.
Tahoe (YC2) trim is available in Blue, Charcoal, Garnet or Gray.
Sport (YC3) trim is available in Blue or Charcoal on 4-doors
and Blue, Charcoal or Gray on 2-doors.

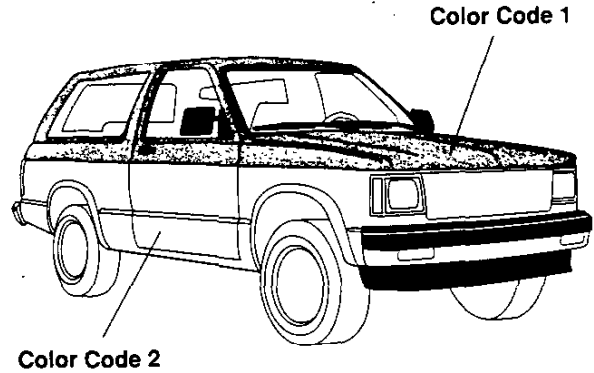
1992

COLOR COMBINATIONS

S-10 BLAZER

**SPECIAL
TWO-TONE
(2 DOOR)
(ZY3)**

Special two-tone (ZY3) paint is available with S-10 (Standard), or Sport (YC3) trim levels on 2-door models. Color Code 1 is applied to the areas above the belt styling crease line, and Color Code 2 is applied to the areas below the belt styling crease line. The only available Color Code 1/Color Code 2 exterior paint combinations are those displayed in the chart below. Recommended interior trim colors are indicated by the symbol ●. However any interior trim color may be ordered if desired by the customer. Also noted in the chart are available D96 and D98 stripe colors. For more information, refer to Seats and Interior Trim pages as well as the Truck Order Guide.



KEY: ● — Recommended

Blank — Available, But Not Recommended

EXTERIOR COLORS		STRIPE COLORS		INTERIOR COLORS		
COLOR CODE 1	COLOR CODE 2	w/D96 ¹ (opt.)	w/D98 (opt.)	Blue	Charcoal	Gray
12 Frost White	24 Aspen Blue Met.	Blue	Blue Mica	●		●
	47 Royal Blue Met.	Blue	Blue Mica	●		●
	72 Apple Red	White	Black		●	●
	90 Steel Gray Met.	White	Black		●	●
19 Midnight Black	17 Silver	Silver	Silver		●	●
	25 Aquamarine Green	Mint Green	Mint Green Mica		●	●
	48 Garnet	N/A	Dk Red & Black		●	●
	72 Apple Red	Red	Dk Red & Black		●	●
	72 Apple Red	Silver	Dk Red & Black		●	●
24 Aspen Blue Met.	17 Silver	Blue	Silver	●		●
	47 Royal Blue Met.	Blue	Blue Mica	●		●
25 Aquamarine Green	17 Silver	Aquamarine Green	Silver		●	●
	90 Steel Gray Met.	Silver	Silver		●	●
26 Sky Blue	12 Frost White	Blue	Blue Mica	●		●
44 Forest Green Met.	17 Silver	Silver	Silver		●	●
	90 Steel Gray Met.	Silver	Silver		●	●
47 Royal Blue Met.	12 Frost White	Blue	Blue Mica	●		●
	17 Silver	Blue	Silver	●		●
	24 Aspen Blue Met.	Blue	Blue Mica	●		●
	26 Sky Blue	Blue	Blue Mica	●		●
48 Garnet	12 Frost White	N/A	N/A		●	●
	17 Silver	Red	Silver		●	●
	72 Apple Red	Silver	Black		●	●
	72 Apple Red	Silver	Silver		●	●
	72 Apple Red	Silver	Red & Dk Red		●	●
	90 Steel Gray Met.	Silver	Black		●	●
72 Apple Red	90 Steel Gray Met.	Silver	Silver		●	●
	12 Frost White	Silver	Black		●	●
	12 Frost White	Silver	Silver		●	●
	17 Silver	Red	Silver		●	●
	19 Midnight Black	Silver	Black		●	●
	48 Garnet	Silver	Red & Dk Red		●	●
90 Steel Gray Met.	90 Steel Gray Met.	Silver	Silver		●	●
	17 Silver	Red	Silver		●	●
90 Steel Gray Met.	17 Silver	Red	Silver		●	●
	19 Midnight Black	Silver	Black		●	●

¹ Optional D96 Stripe is available on Standard S-10 or Tahoe YC2 only.

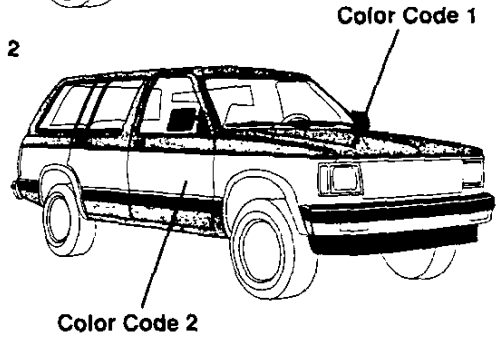
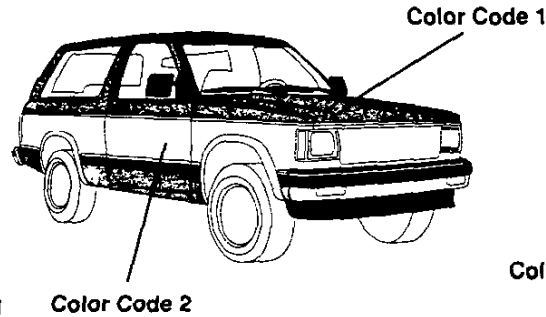
NOTE: S-10 (STANDARD) trim is available in Charcoal or Gray only.
Sport (YC3) trim is available in Blue or Charcoal only.

COLOR COMBINATIONS

1992
S-10 BLAZER

DELUXE TWO-TONE (2 AND 4-DOOR) (ZY4)

Deluxe two-tone (ZY4) paint is available with Tahoe (YC2) trim level on 2-door and 4-door models. It includes black body side moldings and bright wheel opening moldings. The areas above the belt styling crease line and below the moldings are painted color code 1. The areas between the line and the molding are painted color code 2. The only available Color Code 1/Color Code 2 exterior paint combinations are those displayed in the chart below. Recommended interior trim colors are indicated by the symbol ●. However, any interior color may be ordered if desired by the customer. Also noted in the chart are available D98 stripe colors. For more information, refer to Seats and Interior Trim pages as well as the Truck Order Guide.

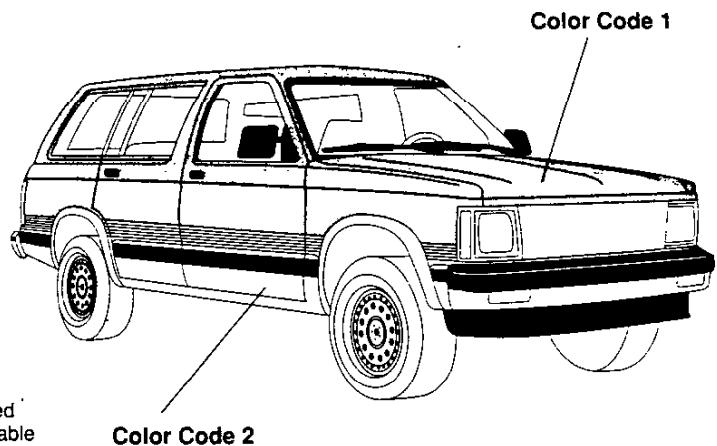


KEY: ● — Recommended Blank — Available, But Not Recommended

EXTERIOR COLORS		STRIPE COLORS	INTERIOR COLORS			
COLOR CODE 1	COLOR CODE 2	w/D98 (optional)	Blue	Charcoal	Garnet	Gray
12 Frost White	24 Aspen Blue Met.	Blue Mica	●			●
	47 Royal Blue Met.	Blue Mica	●			●
	72 Apple Red	Black		●		●
	90 Steel Gray Met.	Black		●	●	●
19 Midnight Black	17 Silver	Silver		●		●
	17 Silver	Dk Red & Black		●	●	●
	25 Aquamarine Green	Mint Green Mica		●		●
	48 Garnet	Dk Red & Black		●	●	●
	72 Apple Red	Red & Dk Red		●	●	●
	90 Steel Gray Met.	Silver		●		●
	90 Steel Gray Met.	Dk Red & Black		●	●	●
24 Aspen Blue Met.	17 Silver	Silver	●			●
	47 Royal Blue Met.	Blue Mica	●			●
25 Aquamarine Green	17 Silver	Silver		●		●
	90 Steel Gray Met.	Silver		●		●
26 Sky Blue	12 Frost White	Blue Mica	●			●
44 Forest Green Met.	17 Silver	Silver		●		●
	90 Steel Gray Met.	Silver		●		●
47 Royal Blue Met.	12 Frost White	Blue Mica	●			●
	17 Silver	Silver	●			●
	24 Aspen Blue Met.	Blue Mica	●			●
	26 Sky Blue	Blue Mica	●			●
48 Garnet	12 Frost White	N/A		●	●	●
	17 Silver	Silver		●		●
	17 Silver	Red & Dk Red		●	●	●
	72 Apple Red	Black		●		●
	72 Apple Red	Silver		●		●
	72 Apple Red	Red & Dk Red		●	●	●
	90 Steel Gray Met.	Black		●		●
	90 Steel Gray Met.	Silver		●		●
	90 Steel Gray Met.	Red & Dk Red		●	●	●
72 Apple Red	12 Frost White	Black		●	●	●
	12 Frost White	Silver		●		●
	17 Silver	Silver		●	●	●
	19 Midnight Black	Black		●	●	●
	48 Garnet	Red & Dk Red		●	●	●
	90 Steel Gray Met.	Silver		●	●	●
90 Steel Gray Met.	17 Silver	Silver		●	●	●
	19 Midnight Black	Black		●	●	●

CUSTOM TWO-TONE (4-DOOR) (ZY8)

Custom two-tone (ZY8) paint is available with Tahoe (YC2) or Sport (YC3) trim levels on 4-door models. It is also standard on Tahoe LT (YC9). YC2 includes chrome bumpers with black rub strips and bright wheel opening moldings. YC3 includes lower body color bumpers with black rub strips and black wheel opening moldings and YC9 includes lower body color bumpers with black rub strips and bright wheel opening moldings. Black body side moldings and decal striping (D85) are also included. Color Code 1 is applied to the area above the stripe and Color Code 2 is applied below the body side molding. The only available Color Code 1/Color Code 2 exterior paint combinations are those displayed in the chart below. Recommended interior trim colors are indicated by the symbol •. They are the only available interior and exterior combinations allowed. For more information refer to Seats and Interior Trim pages as well as the Truck Order Guide.



ZY8 w/Tahoe (YC2)

EXTERIOR COLORS		STRIPE COLORS	INTERIOR COLORS			
COLOR CODE 1	COLOR CODE 2	w/D85 Stripe (Included)	Blue	Charcoal	Garnet	Gray
19 Midnight Black	17 Silver	Silver		•	•	•
	72 Apple Red	Black & Red		•	•	•
	90 Steel Gray Met.	Steel Gray		•	•	•
24 Aspen Blue Met.	26 Sky Blue	Blue	•			•
25 Aquamarine Green	12 Frost White	Aquamarine Green & White		•		•
	17 Silver	Silver		•		•
44 Forest Green Met.	17 Silver	Silver		•		•
47 Royal Blue Met.	17 Silver	Silver	•			•
48 Garnet	17 Silver	Silver		•	•	•
72 Apple Red	17 Silver	Silver		•	•	•

ZY8 w/Sport (YC3)

EXTERIOR COLORS		STRIPE COLORS	INTERIOR COLORS	
COLOR CODE 1	COLOR CODE 2	w/D85 Stripe (Included)	Charcoal	
19 Midnight Black	17 Silver	Silver	•	
	72 Apple Red	Black & Red	•	
	90 Steel Gray Met.	Steel Gray	•	
47 Royal Blue Met.	17 Silver	Silver	•	
48 Garnet	17 Silver	Silver	•	
72 Apple Red	17 Silver	Silver	•	

ZY8 w/Tahoe LT (YC9)

EXTERIOR COLORS		STRIPE COLORS	INTERIOR COLORS		
COLOR CODE 1	COLOR CODE 2	w/D85 Stripe (Included)	Charcoal	Gray	Beige
19 Midnight Black	17 Silver	Silver	•	•	
	52 Khaki	Khaki			•
44 Forest Green Met.	17 Silver	Silver	•	•	
	52 Khaki	Khaki			•
47 Royal Blue Met.	17 Silver	Silver	•	•	
	52 Khaki	Khaki			•
48 Garnet	17 Silver	Silver	•	•	
	52 Khaki	Khaki			•
72 Apple Red	17 Silver	Silver	•	•	