

1986 SPRINT

.....



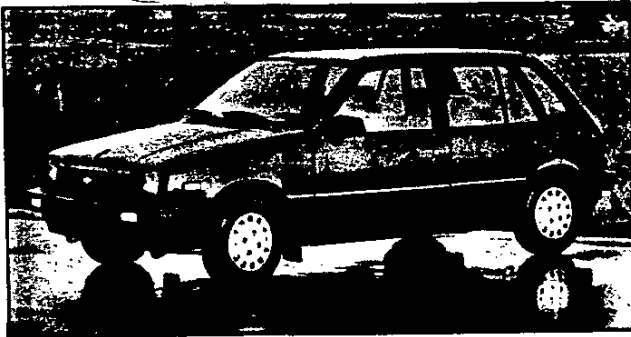
1986

CHEVY SMALL CAR

UPDATE

COMPARISON SHOWDOWN

SPRINT AND SPECTRUM VS HYUNDAI AND YUGO



Chevrolet Sprint "Plus" Hatchback



Chevrolet Spectrum 4-Door Sedan

CHEVY SMALL CARS FACE NEW COMPETITION

Hyundai Excel Zastava Yugo

Two names tough to pronounce — Yet they're two little cars getting plenty of big press coverage lately.

These low-price imports from Korea and Yugoslavia have been getting the attention for one reason only — PRICE. Most people can't believe the stickers. Who ever heard of a \$3990 automobile in the 1980's? That's precisely Yugo's allure — until you start to add up a lot of extra hidden costs.

For Hyundai, (rhymes with Sunday), the price reads \$4995 . . . with a lot of disclaimers and asterisks behind it.

Now look around your showroom. You'll see the best small car lineup in the industry with Sprint ER (highest mileage car in the U.S.), Spectrum, Chevette, Nova and Cavalier. It's a strong team — and you need all the facts on Chevy advantages to sell effectively against these two new "bargain basement" small cars in town.

This edition of Small Car Update is designed to do just that — and bring you up to date on Hyundai and Yugo . . . both where they are now and where they plan to be in the American market.

Hyundai Excel and Zastava Yugo will compete directly against Sprint and Spectrum. The following pages detail important Sprint and Spectrum features as well as their competitive advantages over these two new competitors.

SPRINT — REASONS TO BUY

- 1.0L 3-cylinder engine — Spirited performance with exceptional fuel economy
- Highest mileage rating in the U.S. with the Sprint ER — 55 mpg city and 60 mpg highway (Not available in high altitude areas)
- Two models — 2-door hatchback and new for '86 Sprint "Plus" 4-door hatchback — allows greater choice for buyers
- Comfortable seating for four — offers more interior room than many cars of comparable size
- Standard cloth and vinyl, high back reclining front bucket seats — provides plush comfort for driver and passenger
- Standard lower bodyside protection — protects finish from damage due to flying stones/debris
- Front-wheel-drive and All-Season tires — combine to increase traction in all types of weather
- Easy-entry feature on passenger side front seat — aids rear seat access
- Easily serviceable engine compartment — for do-it-yourself mechanics who like to check their own oil, brake and coolant fluid levels
- Standard 5-speed manual transmission with overdrive in 4th and 5th gears — provides excellent fuel economy and less engine wear
- Power-assisted front disc brakes — for sure stops
- Affordable price for younger buyers or excellent choice as a second family car

SPECTRUM — REASONS TO BUY

- 1.5L 4-cylinder engine — provides outstanding performance with impressive fuel economy
- 5-speed manual transmission with overdrive — provides excellent fuel economy and reduced engine wear
- Front-wheel drive and All-Season tires for road gripping traction in snow and mud.
- Trip odometer, fuel and temperature gauges standard, — not even available as options on some competitors
- Split-folding rear seat-back on hatchback models — adds cargo carrying versatility
- Child-proof rear door locks — helps prevent accidental openings
- Front seatback pockets on sedan models — allows easy storage of articles for rear seat passengers
- Front door storage pockets — puts items such as maps, sun glasses, etc. within easy reach
- Rear seat on hatchback models features adjustable three-position backrests — for added passenger comfort
- Flush-mounted windshield and backglass — provides better aerodynamics for increased fuel efficiency and reduced wind noise

Confidential: For Salesperson's Use Only

PRICES

	SPRINT 2-DOOR H'BACK	SPECTRUM 2-DOOR H'BACK	YUGO 2-DOOR H'BACK	SPRINT "PLUS" 4-DOOR H'BACK	EXCEL 4-DOOR H'BACK	SPECTRUM 4-DOOR SEDAN	EXCEL GL 4-DOOR SEDAN
BASE PRICE (MSRP)*	\$5660	\$6994	\$3990	\$5870	\$4995	\$7778	\$6045

VOLUMES

	SPRINT 2-DOOR H'BACK	SPECTRUM 2-DOOR H'BACK	YUGO 2-DOOR H'BACK	SPRINT "PLUS" 4-DOOR H'BACK	EXCEL 4-DOOR H'BACK	SPECTRUM 4-DOOR SEDAN	EXCEL GL 4-DOOR SEDAN
VOLUME INDEX	71	48	4	49	5		5
PASSENGER CAPACITY	5	5	4	5	5		5
EPA PASS VOL. (CU. FT.)	71	85	80	79	N/A		N/A
CARGO VOL. (CU. FT.)	82	159	9.0	88	7.5		N/A
REAR SEAT UP	22.5	22.1	27.5	24.9	16.7		N/A
REAR SEAT DOWN			N/A		N/A		N/A
TRUNK							11.2

INTERIOR DIMENSIONS

	SPRINT 2-DOOR H'BACK	SPECTRUM 2-DOOR H'BACK	YUGO 2-DOOR H'BACK	SPRINT "PLUS" 4-DOOR H'BACK	EXCEL 4-DOOR H'BACK	SPECTRUM 4-DOOR SEDAN	EXCEL GL 4-DOOR SEDAN
INTERIOR DIMENSIONS (in.)							
FRONT: HEADROOM	41.1	41.1	36.0	37.0	37.5		37.5
LEGROOM	38.4	38.4	39.0	40.9	40.9		40.9
SHOULDER ROOM	50.4	50.4	N/A	52.1	52.1		52.1
HIP ROOM	50.2	50.2	N/A	52.0	52.0		52.0
REAR: HEADROOM	36.0	36.0	35.0	36.9	36.9		36.9
LEGROOM	25.1	25.1	39.0	32.4	32.4		32.4
SHOULDER ROOM	49.7	49.7	N/A	51.6	51.6		51.6
HIP ROOM	48.7	48.7	N/A	52.0	52.0		52.0

EXTERIOR DIMENSIONS

	SPRINT 2-DOOR H'BACK	SPECTRUM 2-DOOR H'BACK	YUGO 2-DOOR H'BACK	SPRINT "PLUS" 4-DOOR H'BACK	EXCEL 4-DOOR H'BACK	SPECTRUM 4-DOOR SEDAN	EXCEL GL 4-DOOR SEDAN
EXTERIOR DIMENSIONS (in.)							
WHEELBASE	84.7	84.7	84.7	93.7	93.7		93.7
OVERALL LENGTH	139.0	139.0	139.0	160.9	160.9		160.9
OVERALL WIDTH	60.7	60.7	60.7	63.1	63.1		63.1
OVERALL HEIGHT	54.7	54.7	54.7	54.1	54.1		54.1
TREAD-FRONT	N/A	N/A	N/A	54.1	54.1		54.1
TREAD-REAR	N/A	N/A	N/A	52.8	52.8		52.8
TURNING DIAMETER							
CURB TO CURB (ft.)	31.2	31.2	31.2	33.8	33.8		33.8
CURB WEIGHT	1509	1900	1832	1558	2170		2150

POWERTEAMS AND FUEL ECONOMY +

MODEL	ENGINE SIZE/TYPE/ FUEL SYSTEM AVAIL/ HP. AND TORQUE	TRANSMISSION AVAILABILITY	EPA EST. CITY MPG	EST. RANGE (MILES)++	HWY. MPG	HWY. RANGE (MILES)+++	FUEL CAP. GALLONS
SPRINT 2-DOOR HATCHBACK	1.0L I-3/2-bbl./STD. 49 H.P. @ 5100 RPM 52 lbs.-ft. @ 2800 RPM	M5OD STD A3 OPT	44	365	50	415	
SPRINT "ER" 2-DOOR HATCHBACK	1.0L I-3/2-bbl./STD. 49 H.P. @ 5100 RPM 52 lbs.-ft. @ 2800 RPM	M5OD STD A3 OPT	44	365	50	415	
SPECTRUM 2-DOOR HATCHBACK	1.5L I-4/2-bbl./STD. 70 H.P. @ 5400 RPM 86 lbs.-ft. @ 2400 RPM	M5OD STD A3 OPT	38	312	47	370	
YUGO 2-DOOR HATCHBACK	1.1L I-4/2-bbl./STD. 55 H.P. @ 6000 RPM 52 lbs.-ft. @ 4600 RPM	M4 STD	25	211	31	262	8.45
SPRINT "PLUS" 4-DOOR HATCHBACK	1.0L I-3/2-bbl./STD. 49 H.P. @ 5100 RPM 52 lbs.-ft. @ 2800 RPM	M5OD STD A3 OPT	44	365	50	415	
EXCEL 4-DOOR HATCHBACK	1.5L I-4/2-bbl./STD. 68 H.P. @ 5500 RPM 82 lbs.-ft. @ 3500 RPM	M4 STD	28	297	31	329	10.6
SPECTRUM 4-DOOR SEDAN	1.5L I-4/2-bbl./STD. 70 H.P. @ 5400 RPM 86 lbs.-ft. @ 2400 RPM	M5OD STD A3 OPT	38	312	47	370	
EXCEL GL 4-DOOR SEDAN	1.5L I-4/2-bbl./STD. 68 H.P. @ 5500 RPM 82 lbs.-ft. @ 3500 RPM	M5OD STD A3 OPT	29	307	34	360	10.6

*MANUFACTURERS SUGGESTED RETAIL PRICE. DESTINATION CHARGE, TAXES AND LICENSE NOT INCLUDED.

+ USE FOR COMPARISON. YOUR MILEAGE MAY DIFFER

++ DRIVING RANGE CALCULATED BY MULTIPLYING EPA CITY MPG BY FUEL CAPACITY

+++ CRUISING RANGE CALCULATED BY MULTIPLYING EPA HWY MPG BY FUEL CAPACITY

ALL INFORMATION PRESENTED IN THIS COMPARISON PIECE WAS UP TO DATE AT THE TIME OF PRINTING.

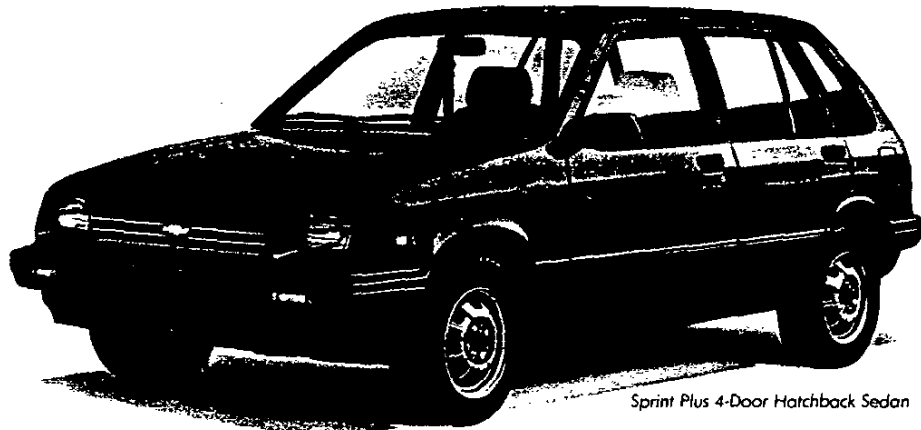
CHEVROLET RESERVES THE RIGHT TO MAKE CHANGES IN COLORS, MATERIALS, EQUIPMENT, SPECIFICATIONS AND MODELS



ORDERING INFORMATION

1986 SPRINT PLUS & SPRINT

SPRINT	MODEL NUMBER	SPRINT PLUS	MODEL NUMBER	PASSENGER CAPACITY
2-Door Hatchback Coupe	1MR08	4-Door Hatchback Sedan	1MR68	All models 4



Sprint Plus 4-Door Hatchback Sedan

NEW FEATURES

- The Sprint 2-Door Hatchback Coupe is continued for 1986 and is joined by a new model, Sprint Plus 4-Door Hatchback Sedan.
- The overall exterior appearance of Sprint models is continued.
- New redesigned nameplates will appear on both models.
- New cloth and vinyl upholstery has been added to the base seat along with covers for the interior windshield pillars.
- Revised Custom Trim Package includes new door trim fabric along with larger armrests plus covers for all interior window pillars and door beltlines.
- New lone-change flasher.
- New all-seasons radial ply steel-belted tires.
- New center high-mounted rear stop lamp.
- New options include ETR radios, floor console, tachometer, full wheel covers, mud guards (front and rear) and new Sport Striping Decal Package.
- 4 exterior colors—1 new for '86, plus 2 Two-Tone combinations.

STANDARD FEATURES

- 1.0 Liter 2-Bbl. 3-cylinder engine (transverse-mounted).
- Five-speed full synchromesh manual transmission.
- Front drive.
- Power front disc/rear drum brake system.
- Rack-and-pinion steering.
- P145/80R-12 steel-belted all-seasons radial ply tires.
- MacPherson-strut front suspension with stabilizer bar.
- Chip-resistant lower body protection.
- Keyless one-hand hatch opening.
- Fold-down rear seat.
- Day/night mirror.
- Remote left outside mirror.

- Front and rear armrests.
- Side window defoggers.
- Luggage area side trim and load floor carpet.
- Trip odometer.
- Full-size spare tire.

EQUIPMENT AVAILABILITY

	Sedan	Coupe
Body-color grille and headlamp bezels	S	S
Black wraparound molded bumpers	S	S
Body-color front air dam and valance panel	S	S
Secondary hood latch on hood	S	S
Black door handles with chrome locks	S	S
Body-color license plate cover	S	S
Tricolor tail lamps	S	S
Integral roof drip rail	S	S
Single rectangular headlamps	S	S
Black windshield wiper arms	S	S
Radio antenna telescopes into left front pillar	S	S
Black exterior window frames	S	—
"Sprint Plus" nameplate	S	NA
Color-keyed instrument panel	S	S
Glove box door and latch	S	S
Illuminated cigarette lighter	S	S
Multi-function lever for high-low beam, lane-change, flash-to-pass and turn signal	S	S
High-back reclining front bucket seats	S	S
Cloth-and-vinyl seats	S	S
Wall-to-wall, cut-pile carpet with edge binding	S	S
Provision for rear speakers in rear quarter trim panel	S	S
Automatic transmission (three-speed)	EC	EC

S—Standard NA—Not Available EC—Extra Cost

Refer to Dealer Order Guide for option availability and application.

POPULAR MODELS & COLORS

1986 EXTERIOR COLORS

- 75—Red
- 67—Light Brown Metallic (New for '86)
- 42—Medium Blue Metallic
- 13—Silver Metallic

POPULAR SELLING EXTERIOR COLORS (MODEL YEAR '85 THROUGH FEBRUARY)

1. 42—Medium Blue Metallic; 26.0%
2. 75—Red; 21.0%
3. 11—White; 17.0%
4. 13—Silver Metallic; 16.0%
5. 42—Medium Blue Metallic/13—Silver; 11.0% (Two-Tone)
6. 75—Red/13—Silver; 9.0% (Two-Tone)

PROJECTED 1986 PRODUCTION MODEL MIX

- 2-Door Hatchback Coupe (IMR08); 50%
- 4-Door Hatchback Sedan (IMR68); 50%

All illustrations and specifications in this brochure are based on the latest product information available at the time of publication approval. The right is reserved to make changes at any time, without notice, in colors, materials, specifications and models, and also to discontinue models. Chevrolet Motor Division, General Motors Corporation, Warren, Michigan 48090.
Litho in U.S.A.



4631/485

ALPHABETICAL OPTION INDEX
 (Not for ordering purposes)

Option Number	Description
A01	GLASS, TINTED: All Windows
B32	FLOOR COVERING: Mats, Color-Keyed, Front only
B33	FLOOR COVERING: Mats, Color-Keyed, Rear only
B84	MOLDINGS: Body Side
C49	DEFOGGER, REAR WINDOW: Electric
C60	AIR CONDITIONING
D35	MIRROR: Outside Sport, LH Remote and RH Manual
D55	CONSOLE
D88	STRIPES, SPORT
LY9	ENGINE: 1.0 Liter 2 BBL L3
MM5	TRANSMISSION: 5-Speed Manual
MX1	TRANSMISSION: Automatic
NA5	EMISSION SYSTEM: Standard Emission Equipment
PB3	WHEEL TRIM: Wheel Covers, Full
QJD	TIRES: P 145/80 R-12 Blackwall (Radial)
Q95	TIRES: P 145/80 R-12 All-Seasons Steel Belted Radial Ply Blackwall
UM6	RADIO EQUIPMENT: Electronically Tuned AM/FM Stereo Radio w/Seek-Scan, Stereo Cassette Tape and Digital Clock
UM7	RADIO EQUIPMENT: Electronically Tuned AM/FM Stereo Radio w/Seek-Scan and Digital Clock
UP4	RADIO EQUIPMENT: Electronically Tuned AM Radio
U16	TACHOMETER
VH4	MUD GUARDS: Front and Rear
YF5	EMISSION SYSTEM: California Emission Requirements
ZN5	SPORT PACKAGE
Z05	COMFORT AND CONVENIENCE PACKAGE

SPRINT HATCHBACK COUPE

COLOR AND TRIM SELECTION

PLEASE NOTE:

AS INDICATED ON THE SMALL CARS QUICK-SPEC WORKSHEET, PRIMARY AND SECONDARY EXTERIOR/INTERIOR COLOR CHOICES MUST BE SPECIFIED. THE EXTERIOR/INTERIOR COLOR COMBINATIONS SHOWN BELOW ARE THE ONLY COMBINATIONS THAT ARE AVAILABLE. NO SUBSTITUTIONS ARE PERMITTED.

CONCERNING SECONDARY EXTERIOR/INTERIOR COLOR CHOICE:
ANY SPECIFIC AVAILABLE COLOR AND TRIM COMBINATION (WITH SOLID COLOR OR CUSTOM TWO-TONE PAINT) MAY BE INDICATED AS A SECONDARY CHOICE. AS A FURTHER ALTERNATIVE, SECONDARY CHOICE CAN REFLECT A WILLINGNESS TO ACCEPT A VEHICLE WITH ANY AVAILABLE COLOR AND TRIM COMBINATION. (SEE ALTERNATIVE SECONDARY COLOR AND TRIM BELOW).

Interior-Trim Color		Med Blue	Lt Saddle
MODEL		SEAT TYPE	
1MR08	Cloth/Vinyl Bucket	HDD2	HCC2
	#Custom,Cloth Bucket	#FDD2	#FCC2

#Available only with Quick-Specs MRA2 and MRA4

CUSTOM TWO-TONE PAINT

Exterior Paint Color	Color Code 1	Color Code 2	Med Blue	Lt Saddle
Blue, Medium (Met) & Silver (Met)	42	13	X	
Red & Silver (Met)	75	13		X

SOLID PAINT APPLICATION

Blue, Medium (Met)	42	42	X	
Brown, Light (Met)	67	67		X
Red	75	75		X
Silver (Met)	13	13	X	

ALTERNATIVE SECONDARY COLOR AND TRIM

IF ONE OF THE SPECIFIC COLOR/TRIM COMBINATIONS ABOVE IS NOT SELECTED AS A SECONDARY CHOICE, ONE OF THE BROADER ALTERNATIVES SHOWN BELOW MUST BE SPECIFIED.

Exterior Paint Color	Color Code 1	Color Code 2	TRIM
Any Two-Tone	AN	Y1	ANY1
Any Solid	AN	Y2	ANY2
Any Paint	AN	Y3	ANY3

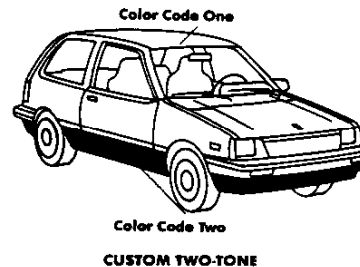
STANDARD STRIPE COLOR WHEN D88 STRIPE IS ORDERED

(Red stripe included with all combinations)

Blue, Medium (Met)	42	Blue	
Brown, Light (Met)	67		Brown
Red	75		Dk Red
Silver (Met)	13	Charcoal	

POWER TEAMS (Refer to next page for option availability and application)

ENGINE OPTION CONDITION		RATIO	
		3.86	4.10
WITH NA5 STANDARD EMISSIONS			
LY9	MM5	-	Std
	MX1	Std	-
WITH YF5 CALIFORNIA EMISSIONS			
LY9	MM5	-	Std
	MX1	Std	-



SPRINT HATCHBACK COUPE

REFER WEEKLY STOPS/LATEST UPDATE

MODEL
1MR08 Sprint 2-Door Hatchback Coupe

ENGINE: MUST ORDER (See Power Teams)

STANDARD EMISSION EQUIPMENT—REQUIRES NA5 (Also Satisfies High Altitude Requirements)
____ LY9 1.0 Liter 2 BBL L3

CALIFORNIA EMISSION EQUIPMENT—REQUIRES YF5
____ LY9 1.0 Liter 2 BBL L3

EMISSION SYSTEMS: MUST ORDER ONE (See Above)

____ NA5 STANDARD EMISSION EQUIPMENT
____ YF5 CALIFORNIA EMISSION REQUIREMENTS

QUICK-SPEC

NOTE: AS INDICATED ON THE SMALL CARS QUICK-SPEC WORKSHEET, A PRIMARY AND SECONDARY QUICK-SPEC MUST BE INDICATED WHEN ORDERING.

DELETIONS ARE NOT PERMITTED FROM QUICK-SPECS

OPTIONS BELOW ARE AVAILABLE ONLY IN THE QUICK-SPECS SHOWN EXCEPT C60 AIR CONDITIONING

	M	M	M	M
	R	R	R	R
	A	A	A	A
	1	2	3	4
Transmission: 5-Speed Manual	MM5	x	x	
Transmission: Automatic	MX1		x	x
Tires: P145/80 R-12 All-Seasons Steel Belted Radial Ply Blackwall	Q95	x	x	x
Air Conditioning	C60	x		x
Comfort and Convenience Package: (Incls Split Folding Rear Seat Back, Passenger Assist Grip, Rear Window Washer/Wiper and Intermittent Wipers)	Z05	x	x	x
Defogger, Rear Window: Electric	C49	x	x	x
Glass, Tinted: All Windows	AO1	x		x
Custom Trim: (Incls Uplevel Seats, Front and Rear, with Full Cloth Facing, Adjustable Headrests and Cloth Door Inserts (Available only when FDD2, FCC2, ANY1, ANY2, or ANY3 is specified))	F**2	x		x
Tachometer	U16	x		

OPTIONS AVAILABLE IN ADDITION TO THOSE SPECIFIED IN QUICK-SPECS. PLEASE REVIEW OPTION RESTRICTIONS BEFORE ORDERING. ADDITIONS MUST BE SHOWN AS "+" ON ORDERS

OPTION

C80 AIR CONDITIONING: (Available with Quick-Specs MRA1, 3)
D55 CONSOLE: (Incl w/ZN5 Sport Package)
FLOOR COVERING:
____ Mats, Color-Keyed, Front only
____ Mats, Color-Keyed, Rear only
D35 MIRROR: Outside Sport, LH Remote and RH Manual
B84 MOLDINGS: Body Side (N/A Custom Two-Tone Paint) (Incl w/ZN5 Sport Package)
VH4 MUD GUARDS: Front and Rear (Incl w/ZN5 Sport Package)
RADIO EQUIPMENT:
UP4 — Electronically Tuned AM Radio
UM7 — Electronically Tuned AM/FM Stereo Radio w/Seek-Scan and Digital Clock (Incls Dual Rear Speakers)
UM8 — Electronically Tuned AM/FM Stereo Radio w/Seek-Scan, Stereo Cassette Tape and Digital Clock (Incls Dual Rear Speakers)
ZN5 SPORT PACKAGE: (N/A Custom Two-Tone Paint) (Incls D88 Sport Stripes, VH4 Mud Guards, PB3 Wheel Covers, D55 Console and B84 Body Side Molding)
D88 STRIPES, SPORT: (N/A Custom Two-Tone Paint) (Incl w/ZN5 Sport Package)
PB3 WHEEL TRIM: Wheel Covers, Full (Incl w/ZN5 Sport Package)

SPRINT ER HATCHBACK COUPE

COLOR AND TRIM SELECTION

PLEASE NOTE:

AS INDICATED ON THE SMALL CARS QUICK-SPEC WORKSHEET, PRIMARY AND SECONDARY EXTERIOR/INTERIOR COLOR CHOICES MUST BE SPECIFIED. THE EXTERIOR/INTERIOR COLOR COMBINATIONS SHOWN BELOW ARE THE ONLY COMBINATIONS THAT ARE AVAILABLE. NO SUBSTITUTIONS ARE PERMITTED.

★ ★ IMPORTANT ★ ★

SINCE THE SPRINT ER MODEL IS AVAILABLE IN TWO COLOR/TRIM COMBINATIONS ONLY, ONE COLOR MUST ALWAYS BE SHOWN AS "PRIMARY" AND THE OTHER COLOR MUST ALWAYS BE SHOWN AS "SECONDARY."

Interior-Trim Color		Med Blue	Lt Saddle
MODEL		SEAT TYPE	
1MS08	Cloth/Vinyl Bucket	HDD2	HCC2

SOLID PAINT APPLICATION

Exterior Paint Color	Color Code 1	Color Code 2	Med Blue	Lt Saddle
Red	75	75		X
Silver (Met)	13	13	X	

STANDARD STRIPE COLOR WHEN D88 STRIPE IS ORDERED

(Red stripe included with all combinations)

Red	75		Dk Red
Silver (Met)	13	Charcoal	

POWER TEAMS (Refer to next page for option availability and application)

ENGINE OPTION CONDITION	RATIO
WITH NA5 STANDARD EMISSIONS	3.78
LY9	Std
WITH YF5 CALIFORNIA EMISSIONS	
LY9	Std

SPRINT ER HATCHBACK COUPE (Not Available High Altitude)
 REFER WEEKLY STOPS/LATEST UPDATE

MODEL
1MS08 Sprint ER 2-Door Hatchback Coupe

ENGINE: MUST ORDER (See Power Teams)

STANDARD EMISSION EQUIPMENT--REQUIRES NA5
 _____LY9 1.0 Liter 2 BBL L3

CALIFORNIA EMISSION EQUIPMENT--REQUIRES YF5
 _____LY9 1.0 Liter 2 BBL L3

EMISSION SYSTEMS: MUST ORDER ONE (See Above)

_____NA5 STANDARD EMISSION EQUIPMENT
 _____YF5 CALIFORNIA EMISSION REQUIREMENTS

QUICK-SPEC



NOTE: AS INDICATED ON THE SMALL CARS QUICK-SPEC WORKSHEET, A PRIMARY AND SECONDARY QUICK-SPEC MUST BE INDICATED WHEN ORDERING.

★ ★ IMPORTANT ★ ★

FOR THIS ER MODEL ONLY, QUICK-SPEC M8A2 MUST ALWAYS BE ENTERED AS THE SECONDARY QUICK SPEC. M8A2 IS FOR PROCESSING PURPOSES ONLY. (OPTION CONTENT IS IDENTICAL TO M8A1.)

DELETIONS ARE NOT PERMITTED FROM QUICK-SPECS

	M
	S
	A
	1
Transmission: 5-Speed Manual	MM5 x
Tires: P 145/80 R-12 Steel Belted Radial ply	QJD x
Blackwall	QJD x



OPTIONS AVAILABLE IN ADDITION TO THOSE SPECIFIED IN QUICK-SPECS. PLEASE REVIEW OPTION RESTRICTIONS BEFORE ORDERING. ADDITIONS MUST BE SHOWN AS "+" ON ORDERS

OPTION

- D55 **CONSOLE:** (Incl w/ZN5 Sport Package)
- FLOOR COVERING:**
 - B32 _____Mats, Color-Keyed, Front only
 - B33 _____Mats, Color-Keyed, Rear only
- D35 **MIRROR:** Outside Sport, LH Remote and RH Manual
- B84 **MOLDINGS:** Body Side (Incl w/ZN5 Sport Package)
- VH4 **MUD GUARDS:** Front and Rear (Incl w/ZN5 Sport Package)
- RADIO EQUIPMENT:**
 - UP4 _____Electronically Tuned AM Radio
 - UM7 _____Electronically Tuned AM/FM Stereo Radio w/Seek-Scan and Digital Clock (Incls Dual Rear Speakers)
 - UM6 _____Electronically Tuned AM/FM Stereo Radio w/Seek-Scan, Stereo Cassette Tape and Digital Clock (Incls Dual Rear Speakers)
- ZN5 **SPORT PACKAGE:** (Incls D88 Sport Stripes, VH4 Mud Guards, PB3 Wheel Covers, D55 Console and B84 Body Side Molding)
- D88 **STRIPES, SPORT:** (Incl w/ZN5 Sport Package)
- P83 **WHEEL TRIM:** Wheel Covers, Full (Incl w/ZN5 Sport Package)

SPRINT PLUS HATCHBACK SEDAN

COLOR AND TRIM SELECTION

PLEASE NOTE:

AS INDICATED ON THE SMALL CARS QUICK-SPEC WORKSHEET, PRIMARY AND SECONDARY EXTERIOR/INTERIOR COLOR CHOICES MUST BE SPECIFIED. THE EXTERIOR/INTERIOR COLOR COMBINATIONS SHOWN BELOW ARE THE ONLY COMBINATIONS THAT ARE AVAILABLE. NO SUBSTITUTIONS ARE PERMITTED.

CONCERNING SECONDARY EXTERIOR/INTERIOR COLOR CHOICE:
 ANY SPECIFIC AVAILABLE COLOR AND TRIM COMBINATION (WITH SOLID COLOR OR CUSTOM TWO-TONE PAINT) MAY BE INDICATED AS A SECONDARY CHOICE. AS A FURTHER ALTERNATIVE, SECONDARY CHOICE CAN REFLECT A WILLINGNESS TO ACCEPT A VEHICLE WITH ANY AVAILABLE COLOR AND TRIM COMBINATION. (SEE ALTERNATIVE SECONDARY COLOR AND TRIM BELOW).

Interior-Trim Color		Med Blue	Lt Saddle
MODEL	SEAT TYPE		
1MR88	Cloth/Vinyl Bucket	HDD2	HCC2
	#Custom Cloth Bucket	#FDD2	#FCC2

#Available only with Quick-Specs MPA2 and MPA4

CUSTOM TWO-TONE PAINT

Exterior Paint Color	Color Code 1	Color Code 2	Med Blue	Lt Saddle
Blue, Medium (Met) & Silver (Met)	42	13	X	
Red & Silver (Met)	75	13		X

SOLID PAINT APPLICATION

Blue, Medium (Met)	42	42	X	
Brown, Light (Met)	67	67		X
Red	75	75		X
Silver (Met)	13	13	X	

ALTERNATIVE SECONDARY COLOR AND TRIM

IF ONE OF THE SPECIFIC COLOR/TRIM COMBINATIONS ABOVE IS NOT SELECTED AS A SECONDARY CHOICE, ONE OF THE BROADER ALTERNATIVES SHOWN BELOW MUST BE SPECIFIED.

Exterior Paint Color	Color Code 1	Color Code 2	TRIM
Any Two-Tone	AN	Y1	ANY1
Any Solid	AN	Y2	ANY2
Any Paint	AN	Y3	ANY3

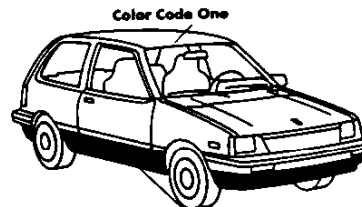
STANDARD STRIPE COLOR WHEN D88 STRIPE IS ORDERED

(Red stripe included with all combinations)

Blue, Medium (Met)	42	Blue	
Brown, Light (Met)	67		Brown
Red	75		Dk Red
Silver (Met)	13	Charcoal	

POWER TEAMS (Refer to next page for option availability and application)

ENGINE OPTION CONDITION	RATIO	
	3.86	4.10
WITH NA5 STANDARD EMISSIONS		
LY9 MM5	Std	Std
MX1		
WITH YF5 CALIFORNIA EMISSIONS		
LY9 MM5	Std	Std
MX1		



CUSTOM TWO-TONE

SPRINT PLUS HATCHBACK SEDAN

REFER WEEKLY STOPS/LATEST UPDATE

MODEL
1MR68 Sprint Plus 4-Door Hatchback Sedan

ENGINE: MUST ORDER (See Power Teams)

STANDARD EMISSION EQUIPMENT—REQUIRES NA5 (Also Satisfies High Altitude Requirements)
_____LY9 1.0 Liter 2 BBL L3

CALIFORNIA EMISSION EQUIPMENT—REQUIRES YF5
_____LY9 1.0 Liter 2 BBL L3

EMISSION SYSTEMS: MUST ORDER ONE (See Above)

_____NA5 STANDARD EMISSION EQUIPMENT
_____YF5 CALIFORNIA EMISSION REQUIREMENTS

QUICK-SPEC



NOTE: AS INDICATED ON THE SMALL CARS QUICK-SPEC WORKSHEET. A PRIMARY AND SECONDARY QUICK-SPEC MUST BE INDICATED WHEN ORDERING.

DELETIONS ARE NOT PERMITTED FROM QUICK-SPECS

OPTIONS BELOW ARE AVAILABLE ONLY IN THE QUICK-SPECS SHOWN EXCEPT C60 AIR CONDITIONING

	M	M	M	M
	P	P	P	P
	A	A	A	A
	1	2	3	4
Transmission: 5-Speed Manual	MM5	x	x	
Transmission: Automatic	MX1		x	x
Tires: P145/80 R-12 All-Seasons Steel Belted Radial Ply Blackwall	Q95	x	x	x
Air Conditioning	C60	x		x
Comfort and Convenience Package: (Incls Split Folding Rear Seat Back, Passenger Assist Grip, Rear Window Washer/Wiper and Intermittent Wipers)	Z05	x	x	x
Defogger, Rear Window: Electric	C49	x	x	x
Glass, Tinted: All Windows	AO1	x		x
Custom Trim: (Incls Uplevel Seats, Front and Rear, with Full Cloth Facing Adjustable Headrests and Cloth Door Inserts (Available only when FDD2, FCC2, ANY1, ANY2, or ANY3 is specified)	F**2		x	x
Tachometer	U16	x		



OPTIONS AVAILABLE IN ADDITION TO THOSE SPECIFIED IN QUICK-SPECS. PLEASE REVIEW OPTION RESTRICTIONS BEFORE ORDERING. ADDITIONS MUST BE SHOWN AS "+" ON ORDERS

OPTION

- C60 **AIR CONDITIONING:** (Available with Quick-Spec MPA1 only)
- D55 **CONSOLE:** (Incl w/ZN5 Sport Package)
FLOOR COVERING:
- B32 _____ Mats, Color-Keyed, Front only
B33 _____ Mats, Color-Keyed, Rear only
- D35 **MIRROR:** Outside Sport, LH Remote and RH Manual
- B84 **MOLDINGS:** Body Side (N/A Custom Two-Tone Paint) (Incl w/ZN5 Sport Package)
- VH4 **MUD GUARDS:** Front and Rear (Incl w/ZN5 Sport Package)
- RADIO EQUIPMENT:**
- UP4 _____ Electronically Tuned AM Radio
UM7 _____ Electronically Tuned AM/FM Stereo Radio w/Seek-Scan and Digital Clock (Incls Dual Rear Speakers)
- UM6 _____ Electronically Tuned AM/FM Stereo Radio w/Seek-Scan, Stereo Cassette Tape and Digital Clock (Incls Dual Rear Speakers)
- ZN5 **SPORT PACKAGE:** (N/A Custom Two-Tone Paint) (Incls D88 Sport Stripes, VH4 Mud Guards, PB3 Wheel Covers, D55 Console and B84 Body Side Molding)
- D88 **STRIPES, SPORT:** (N/A Custom Two-Tone Paint) (Incl w/ZN5 Sport Package)
- PB3 **WHEEL TRIM:** Wheel Covers, Full (Incl w/ZN5 Sport Package)

NOTES