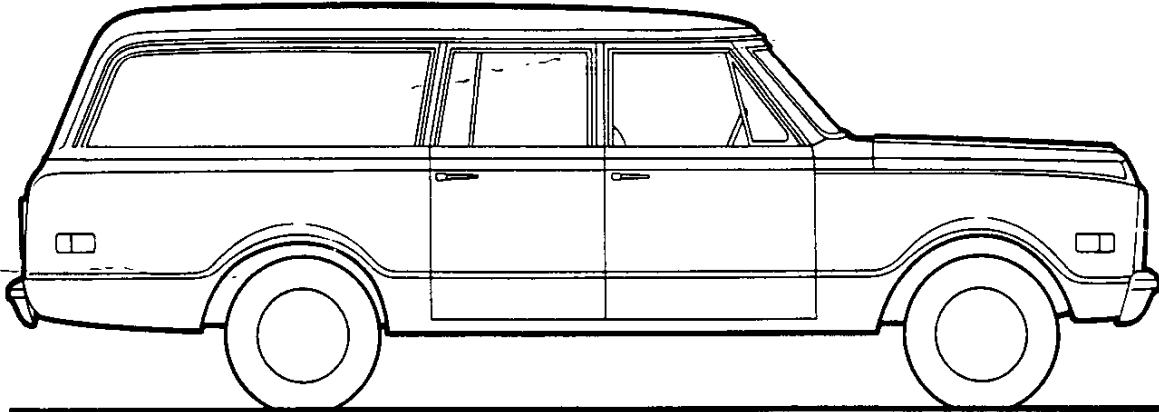


ORIGINAL
SUBURBANS

1972
SUBURBAN MODEL SELECTOR



Series	Engine	Panel Doors	Lift-Tail Gate	Body Length	Standard Seating No. of Passengers
C10	6 cyl.	CS10906	CS10916	9 Ft.	3
	8 cyl.	CE10906	CE10916	9 Ft.	3
C20	6 cyl.	CS20906	CS20916	9 Ft.	3
	8 cyl.	CE20906	CE20916	9 Ft.	3
K10 (4-Wheel-Drive)	6 cyl.	KS10906	KS10916	9 Ft.	3
	8 cyl.	KE10906	KE10916	9 Ft.	3
K20 (4-Wheel-Drive)	6 cyl.	KS20906	KS20916	9 Ft.	3
	8 cyl.	KE20906	KE20916	9 Ft.	3

SUBURBANS—Conventional

STANDARD SPECIFICATIONS

(See Blue Tab Section for Specification Details)

Series	C10	C20
Engine		
Base equip—6 cyl.	250-6	250-6
—8 cyl.	307-V8	307-V8
Clutch—6 cyl.	10", 100 sq. in.	10", 100 sq. in.
—8 cyl.	11", 124 sq. in.	11", 124 sq. in.
Air Filter	Oiled-paper element	
Oil Filter	Throw-away type 1-qt.	
Exhaust System	Single; aluminized	
Exhaust Emission Control	*Controlled Combustion System Light Duty*	
➤ Suspension, Front	Independent, Coil Spring	
Capacity	3100 lb.	3500 lb.
Springs @ ground	1462 lb. ea.	1750 lb. ea.
Shock Absorbers	1" dia.	1" dia.
Suspension, Rear	Hypoid; Coil Springs	
Axle Capacity	3500 lb.	5200 lb.
Axle Ratio	3.73	4.57
Springs, Main @ ground	1400 lb. ea.	2000 lb. ea.
Shock Absorbers	1" dia.	1" dia.
Brakes	Hydraulic; Self-adjusting	
Front	Disc; 11.86" rotor	Disc; 12.5" rotor
Rear	Drum; 11" x 2"	Drum; 11" x 2 3/4"
Booster	Single Diaphragm	Dual Diaphragm
Parking	Cable to Rear Wheels	
Electrical	12 Volt; negative ground	
Battery—6 cyl.	45 amp.	
—8 cyl.	61 amp.	
Delcotron Generator	37 amp.	
Frame	Carbon Steel; 39,000 psi	
Section Modulus	2.98	3.71
Fuel Tank (nominal capacity)	21 gal.	
Steering	Recirculating ball	
Transmission	Fully synchronized 3-speed	
Shift Location	Steering Column	
Tires	(5) G78-15B (4PR)	(4) 8.75-16.5C (6PR)
Wheels	(5) Disc 15" x 6.0"	(5) Disc 16.5" x 6.0"

*California requires Air Injection Reactor system.

SUBURBANS—4-Wheel-Drive

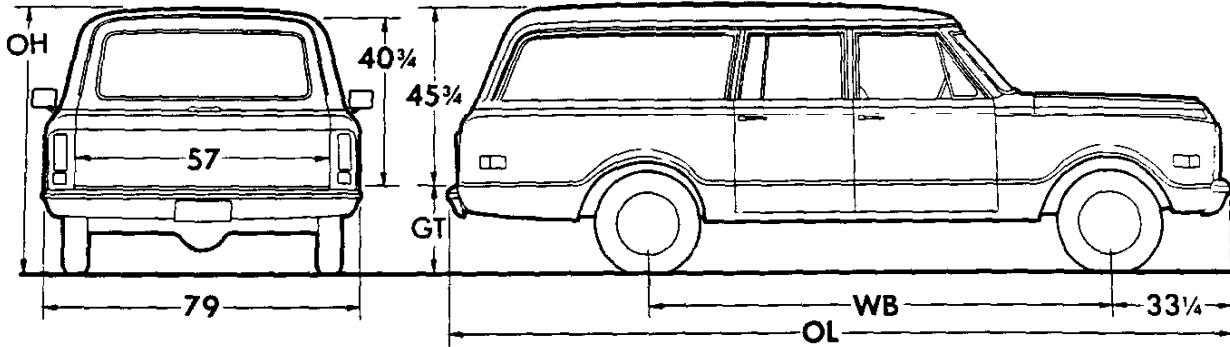
STANDARD SPECIFICATIONS

(See Blue Tab Section for Specification Details)

Series	K10	K20
Engine		
Base equip—6 cyl.	250-6	250-6
—8 cyl.	307-V8	307-V8
Clutch—6 cyl.	10"; 100 sq. in.	10"; 100 sq. in.
—8 cyl.	11"; 124 sq. in.	11"; 124 sq. in.
Air Cleaner	Oiled-paper element	
Oil Filter	Throw-away type 1 qt.	
Exhaust System	Single; aluminized	
Exhaust Emission Control	*Controlled Combustion System Light Duty*	
→ Suspension Front	Hypoid Driving Axle; Leaf Spring	
Capacity	3300 lb.	3500 lb.
Axle Ratio	3.73	4.55
Springs @ ground	1700 lbs. ea.	1700 lbs. ea.
Shock Absorbers	1" dia.	1" dia.
→ Suspension Rear	Leaf Spring; Two-stage multi-leaf	
Axle Capacity	3550 lbs.	5200 lbs.
Axle Ratio	3.73	4.57
Springs @ ground	2000 lbs. ea.	2000 lbs. ea.
Shock Absorbers	1" dia.	1" dia.
Brakes	Hydraulic-Self-adjusting	
Front	Disc; 11.86" rotor	Disc; 12.5" rotor
Rear	Drum; 11" x 2"	Drum; 11" x 2 3/4"
Booster	Single Diaphragm	Dual Diaphragm
Parking	Cable to Rear Wheels	
Electrical	12 Volt; negative ground	
Battery—6 cyl.	45-amp	
—8 cyl.	61-amp	
Delcotron Generator	37-amp	
Frame	Carbon-Steel; 39,000 psi	
Section Modulus	3.48	
Fuel Tank (nominal capacity)	21 gal.	
Steering	Recirculating Ball	
Transmission	3-speed	
Shift Location	Steering Column	
Transfer Case	2-speed New Process 205	
Shift Lever	Single Lever	
PTO Opening	Left Side	
Tires	(5) G78-15B (4PR)	(4) 8.75-16.5C (6PR)
Wheels	(5) Disc 15" x 6.0"	(5) Disc 16.5" x 6.0"

*California requires Air Injection Reactor system

SUBURBANS



NOTE: Cubic Capacity—181.3 cu ft
Load Floor Area—51 sq ft

Illustration shows 16 model rear lift-tail gate.

Models	Engine No. Cyl.	→Dimensions (in)★				Curb Weights (lb)			→Ground Clearance (In)★	
		WB	OL	OH	GT	Front	Rear	Total	Front	Rear
C10 SERIES										
CS10906	6	127	215½	71¾	26½	1993	2000	3993	8	7¼
CE10906	8					2099	2021	4120		
CS10916	6	127	215½	71¾	26½	1996	2002	3998	8	7¼
CE10916	8					2102	2023	4125		
C20 SERIES										
CS20906	6	127	215½	73¾	29¾	2081	2372	4453	8¾	8¼
CE20906	8					2180	2412	4592		
CS20916	6	127	215½	73¾	29¾	2084	2374	4458	8¾	8¼
CE20916	8					2183	2414	4597		
K10 SERIES										
KS10906	6	127	215½	74¾	28½	2242	2131	4373	7¼	7¼
KE10906	8					2356	2149	4505		
KS10916	6	127	215½	74¾	28½	2245	2133	4378	7¼	7¼
KE10916	8					2354	2156	4510		
K20 SERIES										
KS20906	6	127	215½	75½	30	2270	2450	4720	8¼	8¼
KE20906	8					2376	2476	4852		
KS20916	6	127	215½	75½	30	2268	2457	4725	8¼	8¼
KE20916	8					2374	2483	4857		

★Dimensions with std equipment, unloaded.

2
2

NOTES

SUBURBANS

POWER TEAMS

ENGINES		TRANSMISSIONS	REAR AXLES		
Option Number and Model Application	Description	Type (Standard or Optional)	Type and Capacity	Ratios	
				With Single Rear Wheels	
				Standard	Optional

C10 SERIES

■ Standard 6-Cylinder on CS10 models	250-cu-in Six	3-Speed Manual (Std)—ZW4	Chevrolet 3500★	3.73	3.07 or 4.11
		4-Speed (Chevrolet CH465)—M20	Chevrolet 3500★	3.73	3.07 or 4.11
		Turbo Hydra-matic—M49	Chevrolet 3500★	3.73	3.07 or 4.11
● Standard 8-Cylinder on CE10 models	307-cu-in V8	3-Speed Manual (Std)—ZW4	Chevrolet 3500★	3.73	3.07 or 4.11
		4-Speed (Chevrolet CH465)—M20	Chevrolet 3500★	3.07	3.73 or 4.11
		Turbo Hydra-matic—M49	Chevrolet 3500★	3.07	3.73 or 4.11
■ Option LS9 on CE10 models	350-cu-in V8	3-Speed Manual (Std)—ZW4	Chevrolet 3500★	3.07	3.73 or 4.11
		4-Speed (Chevrolet CH465)—M20	Chevrolet 3500★	3.07	3.73 or 4.11
		Turbo Hydra-matic—M49	Chevrolet 3500★	3.07	3.73 or 4.11
● Option L47 on CE10 models	400-cu-in V8	3-Speed Manual (Std)—ZW4	Chevrolet 3500★	3.07	—
		Turbo Hydra-matic—M49	Chevrolet 3500★	3.07	—

C20 SERIES

■ Standard 6-Cylinder on CS20 models	250-cu-in Six	3-Speed Manual (Std)—ZW4	Chevrolet 5200♦	4.57	4.10
		4-Speed (Chevrolet CH465)—M20	Chevrolet 5200♦	4.57	4.10
		Turbo Hydra-matic—M49	Chevrolet 5200♦	4.57	4.10
● Standard 8-cylinder on CE20 Models	307-cu-in V8	3-Speed Manual (Std)—ZW4	Chevrolet 5200♦	4.57	4.10
		4-Speed (Chevrolet CH465)—M20	Chevrolet 5200♦	4.10	4.57
		Turbo Hydra-matic—M49	Chevrolet 5200♦	4.10	4.57
■ Option LS9 on CE20 models	350-cu-in V8	3-Speed Manual (Std)—ZW4	Dana 5500§	3.54	—
		4-Speed (Chevrolet CH465)—M20	Dana 5500§	3.54	—
		Turbo Hydra-matic—M49	Dana 5500§	3.54	—

★ Positraction rear axle also available.

♦ NoSpin rear axle also available.

§ Maximum traction rear axle also available.

■ Available for registration in the State of California when California Assembly Line Emission Test (Option YF5) is applied.

● Not available for registration in the State of California.

ENGINE RATINGS

(Engine ratings shown below are S.A.E. net ratings @ 85° F.)

	250 Six	307 V8	350 V8	400 V8
Net Horsepower	110 @ 3800 rpm	135 @ 4000 rpm	175 @ 4000 rpm	210 @ 4000 rpm
Net Torque, lb-ft . . .	185 @ 1600 rpm	230 @ 2400 rpm	290 @ 2400 rpm	320 @ 2800 rpm

SUBURBANS

POWER TEAMS

ENGINES		TRANSMISSIONS	Transfer Case	REAR AXLES		
Option Number and Model Application	Description	Type (Standard or Optional)		Type and Capacity	Ratios	
					With Single Rear Wheels	
				Standard	Optional	

K10 SERIES

■ Standard 6-Cylinder on KS10 models	250-cu-in Six	3-Speed Manual (Std)—ZW4	New Process 205	Chevrolet 3300★	3.73	—
		4-Speed (Chevrolet CH465)—M20	New Process 205	Chevrolet 3300★	3.73	—
● Standard 8-Cylinder on KE10 models	307-cu-in V8	Turbo Hydra-matic—M49	New Process 205	Chevrolet 3300★	3.73	—
		3-Speed Manual (Std)—ZW4	New Process 205	Chevrolet 3300★	3.07	3.73
■ Option LS9 on KE10 models	350-cu-in V8	4-Speed (Chevrolet CH465)—M20	New Process 205	Chevrolet 3300★	3.07	3.73
		Turbo Hydra-matic—M49	New Process 205	Chevrolet 3300★	3.07	3.73

K20 SERIES

■ Standard 6-Cylinder on KS20 models	250-cu-in Six	3-Speed Manual (Std)—ZW4	New Process 205	Chevrolet 5200♦	4.57	—
		4-Speed (Chevrolet CH465)—M20	New Process 205	Chevrolet 5200♦	4.57	—
● Standard 8-Cylinder on KE20 models	307-cu-in V8	Turbo Hydra-matic—M49	New Process 205	Chevrolet 5200♦	4.57	—
		3-Speed Manual (Std)—ZW4	New Process 205	Chevrolet 5200♦	4.57	—
■ Option LS9 on KE20 models	350-cu-in V8	4-Speed (Chevrolet CH465)—M20	New Process 205	Chevrolet 5200♦	4.10	—
		Turbo Hydra-matic—M49	New Process 205	Chevrolet 5200♦	4.10	—

★ Positraction rear axle also available.

♦ NoSpin rear axle also available.

■ Available for registration in the State of California when California Assembly Line Emission Test (Option YF5) is applied.

● Not available for registration in the State of California.

ENGINE RATINGS

(Engine ratings shown below are S.A.E. net ratings @ 85° F)

	250 Six	307 V8	350 V8
Net Horsepower . . .	110 @ 3800 rpm	135 @ 4000 rpm	175 @ 4000 rpm
Net Torque, lb-ft . . .	185 @ 1600 rpm	230 @ 2400 rpm	290 @ 2400 rpm

SUBURBANS

→ GVW SELECTOR

GVW Rating (lb)	Minimum Equipment Required for GVW Rating		
	Tires, Front	Tires, Rear	Chassis Equipment

C10 SERIES

5200	G78-15B(4PR) (TL or TB)	G78-15B(4PR) (TL or TB)	Standard
6000	H78-15B(4PR) (TL)	H78-15B(4PR) (TL)	1575-lb ea front springs; 2000-lb ea rear springs
6650*	L78-15B(4PR) (TL)	L78-15B(4PR) (TL)	

C20 SERIES

6000	8.75-16.5C(6PR) (TL)	8.75-16.5C(6PR) (TL)	Standard
6400*	8.75-16.5C(6PR) (TL)	8.75-16.5C(6PR) (TL)	
7000*	8.75-16.5C(6PR) (TL)	8.75-16.5D(8PR) (TL)	2750-lb ea rear springs
7500*	9.50-16.5D(8PR) (TL)	9.50-16.5D(8PR) (TL)	

K10 SERIES

5500	G78-15B(4PR) (TL or TB)	G78-15B(4PR) (TL or TB)	Standard
6000	H78-15B(4PR) (TL)	H78-15B(4PR) (TL)	
	6.50-16C(6PR) (TB) (TT)	6.50-16C(6PR) (TB) (TT)	
6800*	L78-15B(4PR) (TL)	L78-15B(4PR) (TL)	

K20 SERIES

6000	8.75-16.5C(6PR) (TL)	8.75-16.5C(6PR) (TL)	Standard
6500*	8.75-16.5C(6PR) (TL)	8.75-16.5C(6PR) (TL)	
7200*	8.75-16.5C(6PR) (TL)	8.75-16.5D(8PR) (TL)	2500-lb ea rear springs
7500*	9.50-16.5D(8PR) (TL)	9.50-16.5D(8PR) (TL)	

TL—Tubeless TB—Tube type TT—Truck type
 *Requires AS3 or A80 Optional seating.

→ Indicates Change

SUBURBANS

C10-20 SERIES—2-WHEEL DRIVE

K10-20 SERIES—4-WHEEL DRIVE

1972 MODELS WITH STANDARD EQUIPMENT

Model Number and Description	Wheel-base	Factory D & H§	List Price	Mfr's Sgt'd Retail Price★	Desti-nation Charge & Group Number	Total
■6-Cylinder High Torque 250 Engine						
C10 Series 2-Wheel Drive Suburban Carryall						
CS10906	Panel Doors.....	127"	\$13.90	\$3481.00	\$3494.90	15.....
CS10916	End Gate.....	127"	13.90	3511.00	3524.90	15.....
C20 Series 2-Wheel Drive Suburban Carryall						
CS20906	Panel Doors.....	127"	15.00	3637.00	3652.00	15.....
CS20916	End Gate.....	127"	15.00	3667.00	3682.00	15.....
K10 Series 4-Wheel Drive Suburban Carryall						
KS10906	Panel Doors.....	127"	13.90	4096.00	4109.90	16.....
KS10916	End Gate.....	127"	13.90	4126.00	4139.90	16.....
K20 Series 4-Wheel Drive Suburban Carryall						
KS20906	Panel Doors.....	127"	15.00	4370.00	4385.00	16.....
KS20916	End Gate.....	127"	15.00	4400.00	4415.00	16.....
◆8-Cylinder High Torque 307						
C10 Series 2-Wheel Drive Suburban Carryall						
CE10906	Panel Doors.....	127"	13.90	3596.00	3609.90	15.....
CE10916	End Gate.....	127"	13.90	3626.00	3639.90	15.....
C20 Series 2-Wheel Drive Suburban Carryall						
CE20906	Panel Doors.....	127"	15.00	3752.00	3767.00	15.....
CE20916	End Gate.....	127"	15.00	3782.00	3797.00	15.....
K10 Series 4-Wheel Drive Suburban Carryall						
KE10906	Panel Doors.....	127"	13.90	4211.00	4224.90	16.....
KE10916	End Gate.....	127"	13.90	4241.00	4254.90	16.....
K20 Series 4-Wheel Drive Suburban Carryall						
KE20906	Panel Doors.....	127"	15.00	4485.00	4500.00	16.....
KE20916	End Gate.....	127"	15.00	4515.00	4530.00	16.....

★Manufacturer's Suggested Retail Prices do not include state and local taxes, license fees, options or accessories.
 ■Available for registration in the State of California when California Assembly Line Emission Test (Option YF5) is applied.
 ◆Available for registration in the State of California when optional 350 engine is ordered and California Assembly Line Emission Test is applied.

OPTIONS AND ACCESSORIES WHEN INSTALLED BY CHEVROLET

Description	Option Number	Added Weight (F) (R)	Factory D & H§	List Price	Mfr's Suggested Retail Delivered Price◆
-------------	---------------	----------------------	----------------	------------	---

MODEL OPTION

See Exterior and Interior Color Chart

Custom Deluxe: Includes vent window and windshield moldings; bright control knob trim; fender nameplates; color-keyed floor mat; white hardboard headlining; door and side-wall trim panels; cigar lighter; special insulation; front door dome lamp switches; bright glove box nameplate and dome lamp bezel. Also includes spare tire cover when spare tire is specified on C-K20 models. **HIGHLANDER CLOTH INTERIOR TRIM IS ALSO AVAILABLE FOR C10-20 MODELS ONLY. SEE INTERIOR TRIM OPTIONS PLUS INTERIOR AND EXTERIOR COLOR SELECTION CHARTS FOR AVAILABILITY AND ORDERING INFORMATION.**

When standard front seat is specified. Also includes full-depth foam front seat with cloth trim.

When optional center or rear seats are not ordered.....	262	23	27	—	\$171.00	\$171.00
When optional 58" center seat is ordered.....	262	25	31	—	181.00	181.00
When optional 50" center and rear seats are ordered..	262	25	31	—	192.00	192.00
<i>When custom deluxe vinyl front seat is ordered.</i>						
When optional center or rear seats are not ordered....	262	25	31	—	130.00	130.00
When optional 58" center seat is ordered.....	262	25	31	—	130.00	130.00
When optional 50" center and rear seats are ordered.						
Also includes color-keyed rear floor mat.....	262	25	31	—	151.00	151.00

§D&H amounts reflect provision for pass through of tire weight tax imposed on manufacturer or importer of tires.

◆State and local taxes not included.

SUBURBANS

OPTIONS AND ACCESSORIES WHEN INSTALLED BY CHEVROLET

Description	Option Number	Added Weight (F) (R)		Factory D & H §	List Price	Mfr's Suggested Retail Delivered Price ♦
-------------	---------------	-------------------------	--	-----------------	------------	--

POWER TEAMS AND AXLES

(See Power Teams Chart for availability and complete specifications)

Engines:

350 V8. CE-KE10-20 models only. Includes 4-barrel carburetor and 12" coil clutch. Available for registration in the State of California. LS9 (a) — \$ 43.00 \$ 43.00

400 V8. CE10-20 models only. Includes 4-barrel carburetor and dual exhausts. Not available for registration in the State of California

→ CE10 models only. Available only when 3-speed or Turbo Hydra-matic transmission is ordered. Also available only when HD rear springs and H78-15 or larger tires are ordered without optional center or rear seat or when optional center or rear seat and L78-15/B tires are ordered. Also includes 12" clutch. L47 218 33 — 169.00 169.00

CE20 models only. L47 173 40 — 169.00 169.00

Liquid Petroleum Gas Conversion. C10-20 models only. Available only when 250 engine with HD clutch or Chevrolet 4-speed transmission or 350 engine is specified. Includes internal modifications of valves, compression ratio and heat shield only. L56 (b) — 92.00 92.00

Transmissions:

Turbo Hydra-matic. Includes HD radiator on C-K20 models
Without 400 engine. M49 19 8 — 236.00 236.00
With 400 engine. M49 19 8 — 246.00 246.00

Chevrolet 4-Speed

C-K10 models only. C10 models not available when 400 engine is ordered. M20 (c) — 108.00 108.00
C20 models only. M20 (c) — 118.00 118.00
K20 models only. M20 63 17 — 108.00 108.00

Axles, Rear:

C-K10 models only

3.07 Ratio. C10 models only
C10 models with 3-speed or 4-speed transmission. H01 0 0 — 12.00 12.00
CS10 models with Turbo Hydra-matic transmission. H01 0 0 — 18.00 18.00

3.73 Ratio. H05 0 0 — 12.00 12.00

4.11 Ratio. C10 models only

With 250 or 307 engine. H04 0 0 — 12.00 12.00

With 350 engine

With 3-speed or 4-speed transmission. H04 0 0 — 12.00 12.00

With Turbo Hydra-matic transmission without air conditioning. Includes HD cooling. H04 9 2 — 14.40 14.40

With Turbo Hydra-matic transmission and air conditioning. H04 9 2 — 12.00 12.00

Positraction. G80 0 3 — 64.00 64.00

C-K20 models only

4.10 Ratio. C20 models only. HB8 0 0 — 12.00 12.00

4.57 Ratio. C20 models only. H20 0 0 — 12.00 12.00

NoSPIN. Not available when 400 engine is ordered. G86 0 4 — 128.00 128.00

Maximum Traction. Available only when 400 engine is ordered. G87 0 10 — 128.00 128.00

§ D&H amounts reflect provision for pass through of tire weight tax imposed on manufacturer or importer of tires.

♦ State and local taxes not included.

(a) C10-20 models (F) 36 (R) 11; K10-20 models (F) 21 (R) 6.

(b) Six-cylinder models (F) 1 (R) 0; 8-cylinder models (F) 4 (R) 0.

(c) CS models (F) 78 (R) 21; CE-K models (F) 63 (R) 17

→ Indicates Change

SUBURBANS

OPTIONS AND ACCESSORIES WHEN INSTALLED BY CHEVROLET

Description	Option Number	Added Weight (F) (R)		Factory D & H [§]	List Price	Mfr's Suggested Retail Delivered Price [⊙]
OTHER OPTIONS						
Air Cleaner: Poly-Wrap. Not available when 400 engine is ordered	K43	0	0	—	\$ 10.00	\$ 10.00
Air Conditioning, Independent Front and Roof Mounted: V8 models with custom deluxe only. C10 models available only when HD front and rear springs and H78-15 or larger tires or when center seat(s) are ordered. K10 models available only when H78-15 or larger tires are ordered. Rear system operates on recirculating air. Includes HD radiator and 61-amp generator	C69	(a)		—	641.00	641.00
Batteries: 12-volt						
<i>Auxiliary.</i> 45-amp-hr, 9-plate	TP2	51	-7	—	46.00	46.00
<i>Heavy-Duty.</i> 80-amp-hr, 15-plate	T60	(b)		—	16.00	16.00
Bumpers: Chromed. Front and rear	V37	0	0	—	31.00	31.00
California Assembly Line Emission Test: Released to conform with State of California registration requirements. Not available when 307 or 400 engine is ordered	YF5	0	0	—	15.00	15.00
Caps, Hub: Chromed						
C10-20 models only	P03	0	0	—	10.00	10.00
K10-20 models only	P03	2	2	—	13.00	13.00
Clutch, Heavy-Duty: Diameter 11". CS-KS10-20 models with 3-speed transmission only. Included when Chevrolet 4-speed transmission is ordered	M01	2	1	—	6.50	6.50
Cooling: HD radiator only. Included when air conditioning is ordered. Also included on CE10 models when combination of 350 engine with Turbo Hydra-matic transmission and 4.11 ratio rear axle or C-K20 models with Turbo Hydra-matic transmission is ordered	V01	(c)		—	26.00	26.00
Gauges:						
<i>Ammeter, temperature and oil pressure</i>	Z53	1	0	—	12.00	12.00
<i>Tachometer, ammeter, temperature and oil pressure</i>	U16	2	0	—	56.00	56.00
Generators:						
<i>42-amp Delcotron.</i> Not available when air conditioning is ordered	K79	1	0	—	23.00	23.00
<i>61-amp Delcotron.</i> Included when air conditioning is ordered	K76	1	0	—	31.00	31.00
Glass, Soft-Ray: All windows	A11	0	0	—	30.00	30.00
Guards, Door Edge	B93	0	0	—	8.00	8.00
Hubs, Front Free-Wheeling: K10-20 models only. Manual control at hubs	F76	9	0	—	75.00	75.00
Lamps: Roof Marker. Five	U01	3	1	—	26.00	26.00
Lighter, Cigar: Included when custom deluxe is ordered	U37	0	0	—	5.00	5.00
Mirrors, Exterior: Replacing standard LH and RH mirrors						
<i>Below-Eye-Line Type</i>						
7.5" x 10.5" painted	D29	4	1	—	19.50	19.50
7.5" x 10.5" stainless steel	DG4	4	1	—	36.00	36.00
<i>Camper Type.</i> Stainless steel	DF2	7	2	—	50.00	50.00
Moldings, Custom: Includes bright fuel filler cap						
<i>Belt</i>	BX1	1	2	—	36.00	36.00
<i>Lower Fender, Door and Body</i>	BX2	2	4	—	41.00	41.00
Paints, Exterior: See Color and Trim Chart						
<i>Solid</i>		0	0	—	N.C.	N.C.
<i>Conventional Two-Tone.</i> With white secondary color		0	0	—	41.00	41.00
<i>Special Two-Tone.</i> With white upper and lower secondary colors. Available only when custom lower moldings are ordered		0	0	—	62.00	62.00
Radies: Pushbutton control. Includes front antenna						
AM	U63	7	2	—	67.00	67.00
AM/FM	U69	7	2	—	145.00	145.00

[§] D&H amounts reflect provision for pass through of tire weight tax imposed on manufacturer or importer of tires.

[⊙] State and local taxes not included.

(a) C10 models (F) 104 (R) 40; K10 models (F) 101 (R) 40; C20 models (F) 110 (R) 41; K20 models (F) 109 (R) 41.

(b) 6-Cylinder models (F) 14 (R) -2; 8-Cylinder models (F) 2 (R) 0.

(c) With 250 or 400 engine (F) 4 (R) -1; With 292 or 307 engine (F) 6 (R) -1; With 350 engine (F) 8 (R) -1.

SUBURBANS

OPTIONS AND ACCESSORIES WHEN INSTALLED BY CHEVROLET

Description	Option Number	Added Weight (F) (R)		Factory D & H§	List Price	Mfr's Suggested Retail Delivered Price [⊕]
Seats, Front: See Exterior and Interior Color-Chart						
<i>Custom Deluxe Vinyl, Full-Width.</i> Available in parchment trim only. Not available when Highlander Plaid Interior Trim is ordered. Includes front seat area carpeting						
When optional rear seats are not ordered.....	A52	-4	-2	—	\$ 70.00	\$ 70.00
When center seat is ordered. Also includes center seat area carpeting.....	A52	-4	-2	—	121.00	121.00
When center and rear seats are ordered. Also includes center and rear seat area carpeting.....	A52	-4	-2	—	162.00	162.00
Seats, Rear: Seat trim always matches the front seats whether standard or optional. The price of matching seat trim is included when custom deluxe or optional front seats are ordered. Includes RH coat hook						
<i>Center.</i> 58¾" wide. C10 models available only when H78-15/B or larger tires are ordered. K10 models available only when L78-15/B tires are ordered. Includes HD front- and rear springs on C10-20 models only, LH and RH armrests and (3) seat belts.....						
	AS3	8	133	—	121.00	121.00
<i>Center and Rear.</i> Two 50" wide seats. Includes LH and RH armrests and (3) seat belts. C10-20 models also include HD front and rear springs						
<i>C-K10 models only.</i> Available only when L78-15/B tires are ordered. Also includes dual diaphragm brake booster and HD front control arm on C10 models.....						
	A80	24	211	—	234.00	234.00
<i>C-K20 models only.</i> Available only when 8.75-16.5/D or 9.50-16.5/D rear tires are ordered. K20 models available only when HD rear springs are ordered.....						
	A80	24	211	—	234.00	234.00
Shock Absorbers:						
<i>Front and Rear. Heavy-Duty</i>	F51	(a)		—	15.00	15.00
<i>Rear. Heavy-Duty</i>	G68	0	3	—	8.00	8.00
<i>Superlift Rear. C10-20 models only</i>	G66	0	4	—	46.00	46.00
Springs, Heavy-Duty:						
<i>Front</i>						
Capacity 1575-lb each. C10 models only. Included when center or rear seat is ordered. Capacity increased to 1750-lb each when 400 engine is ordered.....						
	F60	3	0	—	6.00	6.00
Capacity 1900-lb each. C20 models only. Included when center or rear seat is ordered.....						
	F60	3	0	—	6.00	6.00
Capacity 1750-lb each. K10-20 models only.....						
	F60	2	0	—	32.00	32.00
<i>Rear.</i> Included on C10-20 models when optional rear seats are ordered						
Capacity 2000-lb each. C10 models with HD front springs or 400 engine only. Included when center or rear seat is ordered.....						
	G50	0	7	—	18.00	18.00
Capacity 2500-lb each. K20 models only.....						
	G50	0	7	—	18.00	18.00
Capacity 2750-lb each. C20 models with HD front springs only. Included when center or rear seat is ordered.....						
	G50	0	20	—	18.00	18.00
<i>Auxiliary Rear.</i> Capacity 500-lb each. C10-20 models only.....						
	G60	0	43	—	30.00	30.00
Stabilizer, Front: C10-20 models only.....						
	F59	19	0	—	18.00	18.00
Steering, Power:						
C10-20 models only.....	N40	33	0	—	128.00	128.00
K10-20 models only.....	N40	33	0	—	144.00	144.00
Steering Wheel, Comfortilt: Available only when optional transmission is ordered.....						
	N33	(b)		—	56.00	56.00
Switches, Dome Lamp: Front doors. Included when custom deluxe is ordered.....						
	C80	0	0	—	4.00	4.00
Throttle Control: Manual.....						
	K31	1	0	—	14.00	14.00
Tires: See following page						
Towing Device: Two front towing hooks. K10-20 models only.....						
	V76	16	-3	—	18.00	18.00
Trim, Highlander Plaid Interior: C10-20 models with custom deluxe only. Includes black carpeting, instrument panel, steering column and wheel. See <i>Interior And Exterior Color Selection Charts</i> for availability and ordering information.....						
	N.A.	N.A.	—	77.00	77.00
Wheel Covers: Available only when G78-15, H78-15, L78-15 or 7.00-15 tires are ordered.						
<i>Bright Metal</i>						
C10 models only.....	P01	4	4	—	26.00	26.00
K10 models only.....	P01	4	4	—	29.00	29.00
<i>Special.</i> C10 models only.....	PA1	N.A.	N.A.	—	41.00	41.00

§ D&H amounts reflect provision for pass through of tire weight tax imposed on manufacturer or importer of tires.

⊕ State and local taxes not included.

(a) C10 models (F) 4 (R) 4; K10, C-K20 models (F) 3 (R) 3.

(b) All models (F) 2 (R) 0; With 4 speed transmission (F) 3 (R) 1.

SUBURBANS C-K10 SERIES

Tire Size and Type	Rim Width Included In Tire Option	Option Number	Added Weight (F) (R)	Factory D & H [§]	List Price	Mfr's Suggested Retail Delivered Price [⊕]
--------------------	-----------------------------------	---------------	----------------------	----------------------------	------------	---

All tires have black sidewalls except as indicated.
Note: Front and rear tires must be of the same construction, rim width and diameter. K10 models require use of same tread type on front and rear wheels.

TUBE-TYPE TIRES (Factory Installed)

G78-15/B							
(Pass. type) — Highway Bias Belted Ply	(5) Front, rear and spare	6.00	RL5	3	8	\$.25CR \$10.50	\$ 10.25
	(2) Front; C10 models only	6.00	RL5	4	0	.10CR 4.20	4.10
	(3) Front and spare; C10 models only	6.00	RL5	3	3	.15CR 6.30	6.15
— On-Off Road Bias Belted Ply	(5) Front, rear and spare; K10 models only	6.00	RL4	4	8	.25CR 21.00	20.75
	(2) Rear; C10 models only	6.00	RL4	0	5	.10CR 8.40	8.30
	(3) Rear and spare; C10 models only	6.00	RL4	-1	8	.15CR 12.60	12.45
6.50-16/C							
(Pass. type) — Highway Original Equipment	(5) Front, rear and spare	5.00	R61	4	8	.45 32.50	32.95
	(2) Front; C10 models only	5.00	R61	5	0	.18 13.00	13.18
	(3) Front and spare; C10 models only	5.00	R61	4	3	.27 19.50	19.77
— On-Off Road Original Equipment	(5) Front, rear and spare; K10 models only	5.00	R69	9	16	.45 50.00	50.45
	(2) Rear; C10 models only	5.00	R69	0	8	.18 20.00	20.18
	(3) Rear and spare; C10 models only	5.00	R69	-1	13	.27 30.00	30.27
6.50-16/C (6PR) Maximum Tire Capacity (Each)—Front (1610) Rear (1610)							
(Truck type) — Highway Nylon	(5) Front, rear and spare	5.00	R65	(a)		.60 73.50	74.10
	(2) Front; C10 models only	5.00	R65	N.A.	N.A.	.24 29.40	29.64
	(3) Front and spare; C10 models only	5.00	R65	N.A.	N.A.	.36 44.10	44.46
— On-Off Road Nylon	(5) Front, rear and spare; K10 models only	5.00	R64	16	24	2.35 127.00	129.35
	(2) Rear; C10 models only	5.00	R64	0	14	.94 50.80	51.74
	(3) Rear and spare; C10 models only	5.00	R64	-2	23	1.41 76.20	77.61
7.00-15/C (6PR) Maximum Tire Capacity (Each)—Front (1720) Rear (1720)							
(Truck type) — Highway Nylon	(5) Front, rear and spare	6.00	R44	15	30	2.05 97.50	99.55
	(2) Front	6.00	R44	18	0	.82 39.00	39.82
	(3) Front and spare	6.00	R44	15	12	1.23 58.50	59.73
— On-Off Road Nylon	(5) Front, rear and spare; K10 models only	6.00	R43	22	43	4.15 140.50	152.65
	(2) Rear; C10 models only	6.00	R43	0	26	1.66 59.40	61.06
	(3) Rear and spare; C10 models only	6.00	R43	-4	43	2.49 89.10	91.59

TUBELESS TIRES (Factory Installed)

G78-15/B							
(Pass. type) — Highway Bias Belted Ply	(5) Front, rear and spare	6.00	Std	0	0	N.C. N.C.	N.C.
	(5) Front, rear and spare (White Stripe)	6.00	PUB	0	0	N.C. 31.80	31.80
— On-Off Road Bias Belted Ply	(5) Front, rear and spare; K10 models only	6.00	RL3	3	7	N.C. 18.00	18.00
	(2) Rear; C10 models only	6.00	RL3	0	7	N.C. 7.20	7.20
	(3) Rear and spare; C10 models only	6.00	RL3	-1	7	N.C. 10.80	10.80
H78-15/B							
(Pass. type) — Highway Bias Belted Ply	(5) Front, rear and spare	6.00	PV5	4	9	1.15 23.00	24.15
	(2) Front; C10 models only	6.00	PV5	5	0	.46 9.20	9.66
	(3) Front and spare; C10 models only	6.00	PV5	4	4	.69 13.80	14.49
	(5) Front, rear and spare (White Stripe)	6.00	PV6	4	9	1.15 57.90	59.05
— On-Off Road Bias Belted Ply	(5) Front, rear and spare; K10 models only	6.00	RM1	6	13	1.15 41.00	42.15
	(2) Rear; C10 models only	6.00	RM1	0	8	.46 16.40	16.86
	(3) Rear and spare; C10 models only	6.00	RM1	-1	12	.69 24.60	25.29
L78-15/B							
(Pass. type) — Highway Bias Belted Ply	(5) Front, rear and spare	6.00	Q15	8	17	2.50 69.00	71.50
	(2) Front; C10 models only	6.00	Q15	10	0	1.00 27.60	28.60
	(3) Front and spare; C10 models only	6.00	Q15	8	7	1.50 41.40	42.90
	(5) Front, rear and spare (White Stripe)	6.00	Q14	8	17	2.50 110.20	112.70
— On-Off Road Bias Belted Ply	(5) Front, rear and spare; K10 models only	6.00	Q16	10	20	2.50 113.00	115.50
	(2) Rear; C10 models only	6.00	Q16	0	12	1.00 45.20	46.20
	(3) Rear and spare; C10 models only	6.00	Q16	-2	20	1.50 67.80	69.30

[§] D&H amounts reflect provision for pass through of tire weight tax imposed on manufacturer or importer of tires.
[⊕] State and local taxes not included. (a) C10 models (F) 6 (R) 12; K10 models (F) 8 (R) 15.

SUBURBANS C-K20 SERIES

WIDE BASE TUBELESS TIRES (Factory Installed)

Tire Size and Type	Rim Width Included In Tire Option	Option Number	Added Weight (F) (R)		Factory D & H [§]	List Price	Mfr's Suggested Retail Delivered Price [◇]
--------------------	-----------------------------------	---------------	----------------------	--	----------------------------	------------	---

All tires have black sidewalls except as indicated.
 Note: Front and rear tires must be of the same construction, rim width and diameter. K20 models require use of same tread type on front and rear wheels.

8.75-16.5/C (6PR) Maximum Tire Capacity (Each)—Front (1990) Rear (1990)

—Highway	(4) Front and Rear	6.00	Std	0	0	N.C.	N.C.	N.C.
Nylon	(1) Spare	6.00	RP5	-9	45	\$ 3.75	\$ 67.70	\$ 71.45
—On-Off Road	(2) Front; K20 only	6.00	RP2	1	0	.32	21.50	21.82
Nylon	(2) Rear	6.00	RP2	0	1	.32	21.50	21.82
	(1) Spare	6.00	RP2	-9	46	3.91	86.10	90.01

8.75-16.5/D (8PR) Maximum Tire Capacity (Each)—Front (2350) Rear (2350)

—Highway	(2) Front	6.00	RP6	8	0	.52	19.40	19.92
Nylon	(2) Rear	6.00	RP6	0	8	.52	19.40	19.92
	(1) Spare	6.00	RP6	-10	50	4.01	75.90	79.91
—On-Off Road	(4) Front and Rear; K20 only	6.00	RQ4	5	5	1.84	82.00	83.84
Nylon	(2) Rear	6.00	RQ4	0	5	.92	41.00	41.92
	(1) Spare	6.00	RQ4	-10	49	4.21	86.10	90.31

9.50-16.5/D (8PR) Maximum Tire Capacity (Each)—Front (2780) Rear (2780)

—Highway	(4) Front and Rear	6.75	RP9	37	37	3.52	101.40	104.92
Nylon	(2) Front; C20 models only	6.75	RP9	37	0	1.76	49.20	50.96
	(1) Spare	6.75	RP9	-12	60	4.63	89.20	93.83
—On-Off Road	(4) Front and Rear; K20 only	6.75	RQ5	38	43	4.04	144.60	148.64
Nylon	(2) Rear; C20 only	6.75	RQ5	0	43	2.02	73.80	75.82
	(1) Spare	6.75	RQ5	-13	64	4.76	99.40	104.16

[§] D&H amounts reflect provision for pass through of tire weight tax imposed on manufacturer or importer of tires.

[◇] State and local taxes not included.

SUBURBANS

CUSTOM FEATURES—STANDARD MODEL

The Custom standard model includes the following items as standard equipment.

EXTERIOR

● Bright Appearance Items

Chevrolet Emblem: Mounted center of grille with bright outer edge and blue paint fill
"Chevrolet" Nameplate with Series Designation: Mounted on rear door or tailgate
Custom Nameplate: Side of front fender
Door Entry Handles
Door Lock Cylinder Assemblies
Grille: Bright anodized aluminum outer area and inner plastic grid with black and gray colors
Headlamp Bezels
Mirrors: Chrome RH and LH

● Bumpers: Front and rear; painted white

● Color: See Exterior and Interior Color Selection Chart

● Doors: Two RH side doors, one LH side door and two rear panel doors (06 models) or rear tailgate/liftgate (16 models)

● Door Opening and Locking Methods:

Front side doors; push button latch release with key lock cylinder in each front side door; inside pushbutton latch

RH rear side door; pushbutton latch release without exterior lock; inside pushbutton latch

Rear panel doors (06 models); two position telescoping door checks which hold doors open at either 107° or 168° angle; RH pushbutton latch release and keylock cylinder with LH door inside release

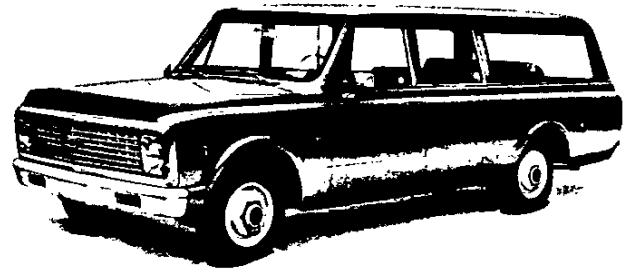
Rear tailgate (16 models); slight depression of the central pushbutton release on the tailgate releases latch and allows the tailgate to be released without disturbing the tailgate. Side telescoping links support the liftgate in the open position. Full depression of the same pushbutton unlocks the tailgate and permits it to be opened and supported in the open position by side folding links

● Glass

Windshield

RH and LH front side door drop glass and ventipane; visibility area 435 sq. in. each

RH rear side door drop glass and fixed glass in rear; visibility area 473 sq. in.



Optional center and rear seats also shown in illustrations.

LH front quarter opposite RH rear side door; has same arrangement and visibility area as opposite window

RH and LH rear side fixed windows; visibility area 921.5 sq. in. each

Rear panel doors with fixed glass in each door (06 models); visibility area 653.8 sq. in. or rear tailgate with fixed glass (16 models); visibility area 767.4 sq. in.

● Lights

Back-up lights: Two rear

Combination parking/direction/hazard: Two front Class A

Combination tail/stop/direction/hazard: Two rear Class A

Headlights: Two; Power Beam

License Plate: Single rear

Side Marker and reflectors: Two front and two rear

● Mirror: RH & LH chrome fixed arm with 4½" x 6" head

● Horn: Single; low note; electric

● Hub Caps: Painted white with black and blue trim (CS/CE models only)

● Tools: Mechanical jack; wheel wrench

● Undercoating: Partial under-body and full under front and rear wheel housings

● Wheels: Painted white

● Windshield Wipers and Washers: Electric; 2-speed wipers with matte finish on wiper arms and blades

INTERIOR

● Air Vents: RH & LH Cowl side; individually controlled

● Arm Rests: RH & LH integral with front door trim panels (all models); integral with center seat (Series 20)

● Ash Tray: Mounted middle of instrument panel

● Coat Hook: LH side (all models); RH side (Series 20 only)

● Colors:

Paint: Same as exterior main color choice

Trim: Color choice of parchment, black, blue, or green

● Door Locks: Inside, pushbutton lock/release (side doors only)

● Door Seals: Closed-cell-type rubber

● Floor Mats: Embossed black rubber; front (all models); rear seat area (Series 20)

● Instruments

Gauges: Speedometer, odometer and fuel

Switches: Exterior lights, instrument lights and dome lights; wiper-washer; headlight beam (foot); ignition; direction signal with Lane change position; hazard warning and heater

Warning Lights: Generator, oil pressure, engine temperature, brake warning, direction signals and high beam

● Instrument Cluster Bright Trim:

Outer edge and bezels

● Instrument Panel Pad: Top of panel

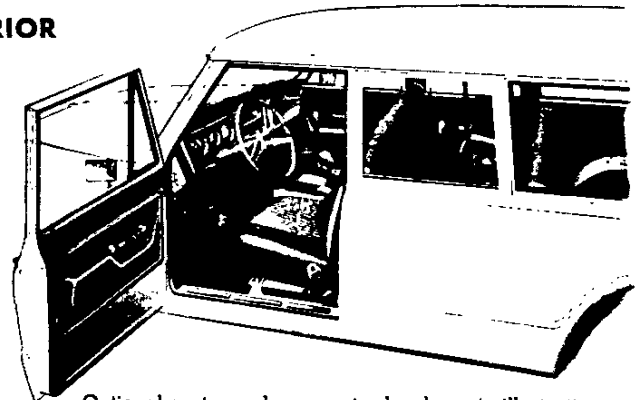
● Heater and Defroster: Deluxe-air

● Interior Lights: Instrument and dome operated by main light switch

● Insulation and Deadening Material:

Dash (firewall), under the floor mats and on front roof panel

● Mirror, Rearview: 10" vinyl edged prismatic



Optional center and rear seats also shown in illustrations.

● Safety Step Pads: On side door sills (all models); on floor panel adjacent to rear side door (Series 10)

● Seat: Full-width; embossed vinyl trim; Front

● Seat Belts: For each seat position; pushbutton release; includes retractors for driver and RH front seat passenger

● Steering Wheel: Painted, oval 17" x 17½", 2-spoke

● Sunshades: RH & LH padded

● Scuff Plate: Door opening protection and floor mat retainer

● Spare Tire Carrier: RH rear side

● Trim Panels: Embossed molded plastic on RH & LH front side doors, RH rear side door and LH sidewall opposite rear side door

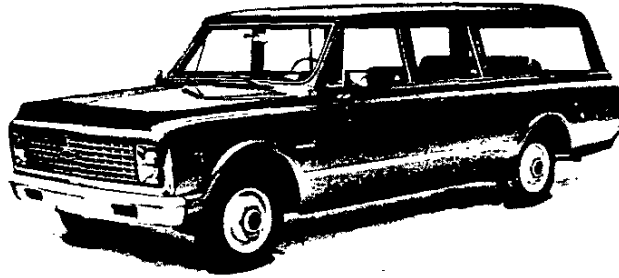
SUBURBANS

CUSTOM DELUXE MODEL OPTION—RPO Z62

(This option includes all standard items except for the following additions or substitutions)

EXTERIOR

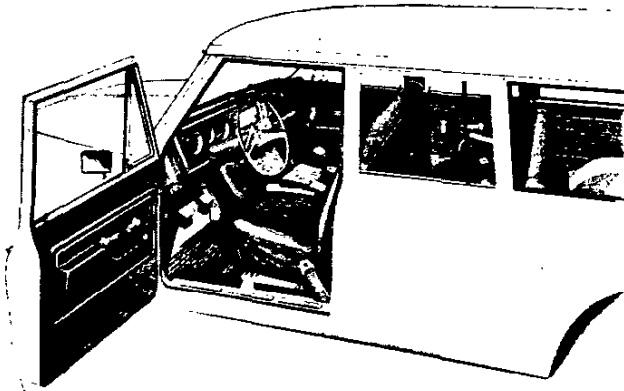
- **Bright Metal Appearance Items**
"Custom Deluxe" Nameplate with Series Designation: Side of front fender
Ventipane frames
Windshield reveal moldings
- **Horn:** Additional; high note; electric
- **Undercoating:** Full underbody sprayed with mastic coating



INTERIOR

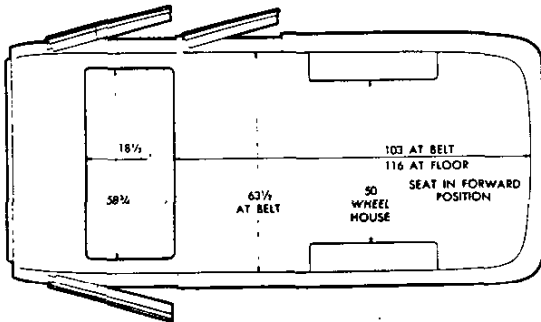
- **Bright Metal Appearance Items**
Control Knob Inserts
Dome Lamp Bezel
Rear quarter trim panel retainers
- **Cigar Lighter**
- **Courtesy Light Switches:** Front side doors; door actuated dome lamp
- **Floor Mat:** Color keyed rubber
- **Headliner:** White perforated hard board; entire length of roof
- **Insulation:** Cowl panel
- **Seats:** Full depth foam cushion for front seat; fabric vinyl trim in choice of black, blue, parchment, or olive
- **Spare Tire Cover:** Black Vinyl
- **Trim Panels:** Molded plastic with embossed design and bright trim for RH & LH front side doors; RH rear side door, LH front sidewall; and RH and LH rear sidewalls

Optional center and rear seats also shown in illustrations.

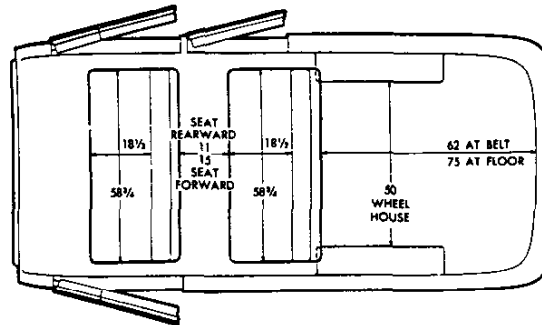


SEATING ARRANGEMENTS

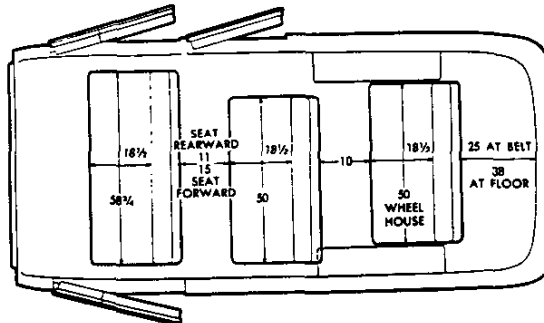
Standard Seat
Optional Custom Deluxe Vinyl Bench Seat
(RPO A52)



Standard or Optional Custom Deluxe Vinyl Front and Optional Center Seat (AS3)



Standard or Optional Custom Deluxe Vinyl Front and Optional Center and Rear Seats (RPO A80)



SUBURBANS INTERIOR AND EXTERIOR COLOR CHARTS

All orders must show one of the following interior trim codes on the order form

IMPORTANT

Dealer Note: Exterior and interior combinations shown in chart below are those recommended by Chevrolet; however, any exterior color may be ordered with any available interior color if the particular combination is desired by a customer.

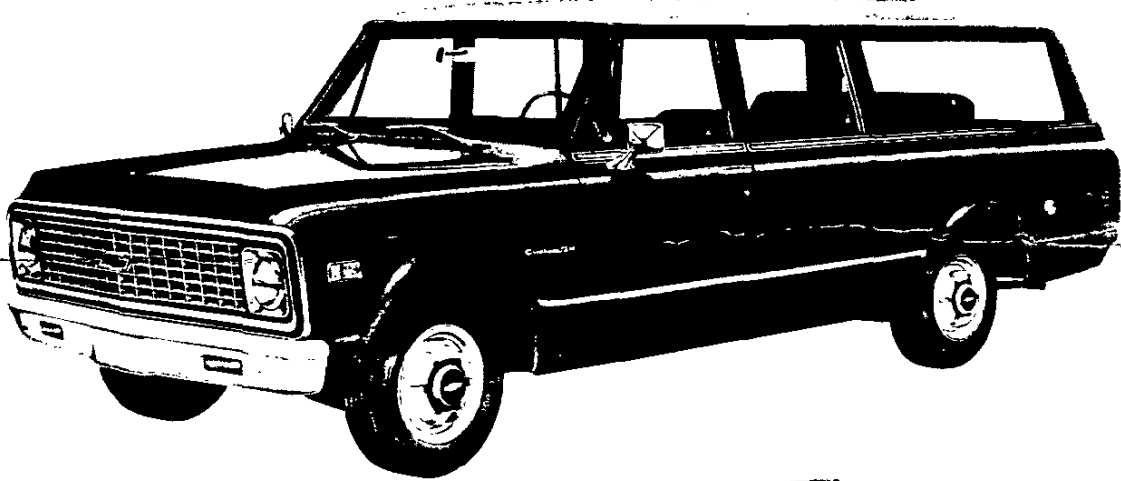
INTERIOR TYPE	TYPE OF SEAT	INTERIOR TRIM COLOR AND CODE								
		Avocado	Black	Blue	Gray	Green	Olive	Orange	Parch-ment	
Standard Interior	Vinyl Bench		634	640		646			660	
(Z62) Custom Deluxe— With patterned cloth	Cloth Bench		635	641			663		660	
(Z62) Custom Deluxe—With Highlander plaid cloth	Cloth Bench	647♦		642♦	639♦			651♦		
(A52) Custom Bench Seat	Vinyl Bench								660	
EXTERIOR COLOR										
SOLID	Option Number									
Black, Midnight	500	X	X	X	X	X		X	X	
Blue, Hawaiian	510		X	X	X				X	
Blue, Mariner	523		X	X	X				X	
Bronze, Classic	522		X		X				X	
Gold, Spanish	511		X		X				X	
Green, Glenwood	505		X		X	X			X	
Green, Meadow	518		X		X	X			X	
Green, Spruce	506	X			X		X		X	
Green, Willow	504	X	X		X		X		X	
Orange, Firebolt	524		X		X			X	X	
Orange, Tangier	516	X	X		X			X	X	
Red, Crimson	514		X		X				X	
White, Frost	521	X	X	X	X	X	X	X	X	
Yellow, Grapefruit	525	X	X		X			X	X	
Yellow, Wheatland	519		X		X			X	X	
TWO-TONE										
MAIN BODY COLOR (White Secondary Color)	Conven-tional Two-Tone	Special Two-Tone (With BX2 Moldings Only)								
Black, Midnight	530	586	X	X	X	X	X		X	X
Blue, Hawaiian	542	591		X	X	X			X	
Blue, Mariner	572	592		X	X	X			X	
Bronze, Classic	551	582		X		X			X	
Gold, Spanish	536	590		X		X			X	
Green, Glenwood	535	599		X		X	X		X	
Green, Meadow	545	598		X		X	X		X	
Green, Spruce	564	589	X			X		X	X	
Green, Willow	534	588	X	X		X		X	X	
Orange, Firebolt	553	596		X		X			X	X
Orange, Tangier	546	594	X	X		X			X	X
Red, Crimson	544	593		X		X			X	
Yellow, Grapefruit	545	595	X	X		X			X	X
Yellow, Wheatland	549	581		X		X			X	X

♦C10-20 Suburban Carryall models only.

SUBURBANS

TWO-TONE COMBINATIONS*

The application of two-tone combinations are shown below and specified in two-tone chart on page 17



CONVENTIONAL TWO-TONE

The roof, rear body pillars, rear drip gutter and the upper portion of the rear doors (or tailgate) are all painted White.



SPECIAL TWO-TONE

The roof, rear body pillars, rear drip gutter, the upper portion of the rear doors (or tailgate) and area below optional lower fender, door & body molding are all White. The lower fender, door & body molding, RPO BX2, shown in the illustrations is a required option. The belt line molding, RPO BX1, is an extra-cost option.



*Optional at extra cost