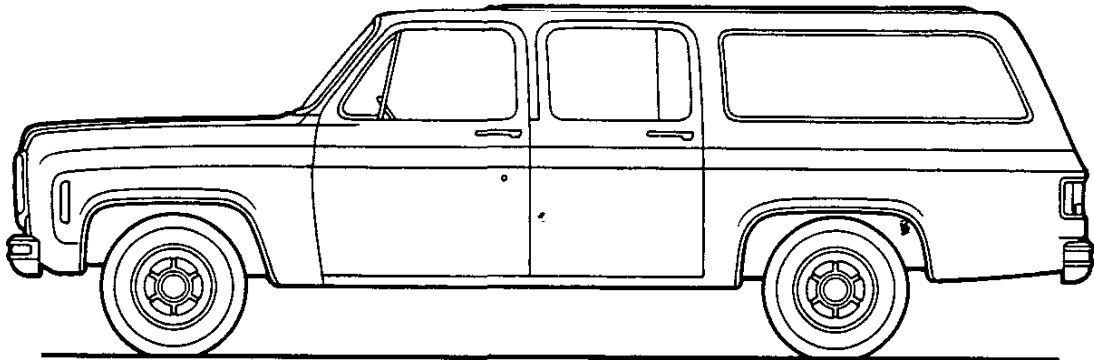


# SUBURBAN

## SUBURBAN MODEL SELECTOR



Series	Model Number	Body Ordering Code		Standard Seating No. of Passengers
		Panel Rear Doors	Endgate	
<b>C10</b>	CC10906	ZW9	E55	3
<b>C20</b>	CC20906	ZW9	E55	6
<b>K10</b> (4-Wheel-Drive)	CK10906	ZW9	E55	3
<b>K20</b> (4-Wheel-Drive)	CK20906	ZW9	E55	6

# SUBURBAN—Conventional

## STANDARD SPECIFICATIONS (See Blue Tab Section for Specification Details)

Series	C10	C20
<b>Engine</b>		
Base equip—6 cyl. ....	250-6	—
—8 cyl. ....	350-V8 (4-bbl.)	454-V8 (4-bbl.)
Clutch—6 cyl. ....	10", 100 sq. in.	—
—8 cyl. ....	12", 150 sq. in.	—
Air Filter .....	Oiled-paper element	
Oil Filter .....	Throw-away type 1-qt.	
Exhaust System .....	Single; aluminized	
Emission Control Systems .....	*Meets Government Requirements	
<b>Suspension, Front</b>	Independent, Coil Spring	
Capacity .....	3100 lb.	3800 lb.
Springs @ ground .....	1550 lb. ea.	1750 lb. ea.
Shock Absorbers .....	1" dia.	1" dia.
<b>Suspension, Rear</b>	Hypoid; Two-stage multi-leaf springs	
Axle Capacity .....	3750 lb.	5700 lb.
Axle Ratio—6 cyl. ....	3.73	—
—8 cyl. ....	3.40	3.73
Springs, Main @ ground .....	1550 lb. ea.	2000 lb. ea.
Shock Absorbers .....	1" dia.	1" dia.
<b>Brakes</b>	Hydraulic; Self-adjusting	
Front .....	Disc; 11.86" rotor	Disc; 12.5" rotor
Rear .....	Drum; 11" x 2"	Drum; 11.15" x 2.75"
Booster .....	Single Diaphragm	Dual Diaphragm
Parking .....	Cable to Rear Wheels	
<b>Electrical</b>	12 Volt; negative ground	
Battery—6 cyl. ....	45 amp. hr.; 2300 watts @ 0°F.	—
—8 cyl. ....	61 amp. hr.; 2900 watts @ 0°F.	80 amp. hr.; 4000 watts @ 0°F.
Delcotron Generator .....	37 amp.	
<b>Frame</b>	Carbon Steel; 39,000 psi	
Section Modulus .....	3.06	3.84
<b>Fuel Tank (nominal capacity)</b> .....	24 gal.	
<b>Steering Gear Type</b> .....	Recirculating ball	Integral Power
Linkage .....	Parallelogram	
<b>Transmission</b> .....	Fully synchronized 3-speed	Turbo Hydra-matic
Shift Location .....	Steering Column	
<b>Tires</b> .....	(5) G78-15B (4PR)	(4) 8.75-16.5C (6PR)
<b>Wheels</b> .....	(5) Disc 15" x 6.0"	(5) Disc 16.5" x 6.0"

\*See Engine & Cooling Section for specific types used.

# SUBURBAN-4-Wheel-Drive

## STANDARD SPECIFICATIONS

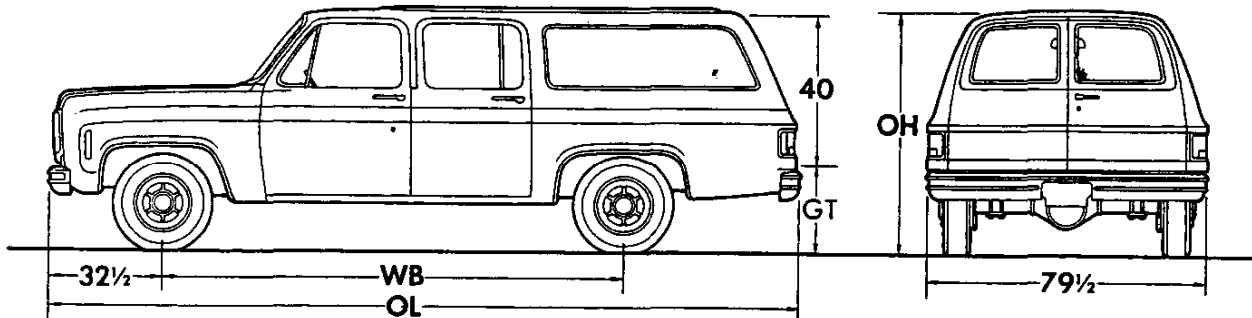
(See Blue Tab Section for Specification Details)

Series	K10	K20
<b>Engine</b>		
<b>Base equip</b> .....	350-V8 (4-bbl.)	350-V8 (4-bbl.)
<b>Clutch</b> .....	12"; 150 sq. in.	12"; 150 sq. in.
<b>Air Cleaner</b> .....	Oiled-paper element	
<b>Oil Filter</b> .....	Throw-away type 1 qt.	
<b>Exhaust System</b> .....	Single; aluminized	
<b>Emission Control Systems</b> .....	*Meets Government Requirements	
<b>Suspension Front</b> .....	Hypoid Driving Axle; Leaf Spring	
<b>Capacity</b> .....	3400 lb.	3500 lb.
<b>Axle Ratio</b> .....	3.07	4.10
<b>Springs @ ground</b> .....	1850 lbs. ea.	1850 lbs. ea.
<b>Shock Absorbers</b> .....	1" dia.	1" dia.
<b>Stabilizer Bar</b> .....	Standard	
<b>Suspension Rear</b> .....	Leaf Spring; Two-stage multi-leaf	
<b>Axle Capacity</b> .....	3750 lbs.	5700 lbs.
<b>Axle Ratio</b> .....	3.07	4.10
<b>Springs @ ground</b> .....	2250 lbs. ea.	2800 lbs. ea.
<b>Shock Absorbers</b> .....	1" dia.	1" dia.
<b>Brakes</b>	Hydraulic-Self-adjusting	
<b>Front</b> .....	Disc; 11.86" rotor	Disc; 12.5" rotor
<b>Rear</b> .....	Drum; 11.00" x 2.0"	Drum; 11.15" x 2.75"
<b>Booster</b> .....	Single Diaphragm	Dual Diaphragm
<b>Parking</b> .....	Cable to Rear Wheels	
<b>Electrical</b>	12 Volt; negative ground	
<b>Battery</b> .....	61 amp. hr.; 2900 watts @ 0°F.	
<b>Delcotron Generator</b> .....	37 amp.	
<b>Frame</b>	Carbon-Steel; 39,000 psi	
<b>Section Modulus</b> .....	3.84	
<b>Fuel Tank (nominal capacity)</b> .....	24 gal.	
<b>Steering Gear Type</b> .....	Recirculating Ball	
<b>Linkage</b> .....	Conventional	
<b>Transmission</b> .....	Fully synchronized 3-speed	
<b>Shift Location</b> .....	Steering Column	
<b>Transfer Case</b> .....	New Process 203 (Full Time)	
<b>Shift Lever</b> .....	Single Lever	
<b>PTO Opening</b> .....	Left Side	
<b>Tires</b> .....	(5) G78-15B (4PR)	(4) 8.75-16.5C (6PR)
<b>Wheels</b> .....	(5) Disc 15" x 6.0"	(5) Disc 16.5" x 6.0"

\*See Engine & Cooling Section for specific types used.

# SUBURBAN

Body Ordering Codes:  
**ZW9—Panel Rear Doors**  
**†E55—Endgate**



**Capacity**—143½ cu. ft.  
**Load Floor Area**—40 sq. ft.

Series	Ground Clearance (in)★	
	Front	Rear
C10	7¼	7
C20	8	7
K10	7¼	7
K20	8¼	7

Models	Engine No. Cyl.	Dimensions (in)★				†Curb Weights (lb)			†Model Weights (lb)*		
		WB	OL	OH	GT	Front	Rear	Total	Front	Rear	Total†

## C10 SERIES

<b>CC10906</b>	6	129.5	218¾	71	26	2070	2107	4177	2313	2314	4777
	8					2196	2135	4331	2439	2342	4931

## C20 SERIES

<b>CC20906</b>	8	129.5	218¾	72	27	2568	2522	5090	2922	3068	6140
----------------	---	-------	------	----	----	------	------	------	------	------	------

## K10 SERIES

<b>CK10906</b>	8	129.5	218¾	73¾	29½	2541	2298	4839	2784	2505	5439
----------------	---	-------	------	-----	-----	------	------	------	------	------	------

## K20 SERIES

<b>CK20906</b>	8	129.5	218¾	75½	31½	2687	2533	5220	3041	3079	6270
----------------	---	-------	------	-----	-----	------	------	------	------	------	------

★Dimensions with std equipment, unloaded.

\*Model Weight includes curb weight plus occupants (standard seating capacity x 150 lbs.).

†Curb Weights and Model Weights shown are for models with ZW9 Panel Rear Doors. For models with E55 Endgate, weights must be adjusted as follows: Front —10 lb.; Rear +36 lbs.; Total added weight 26 lbs.

‡Total also includes 150 lbs. minimum payload allowance.

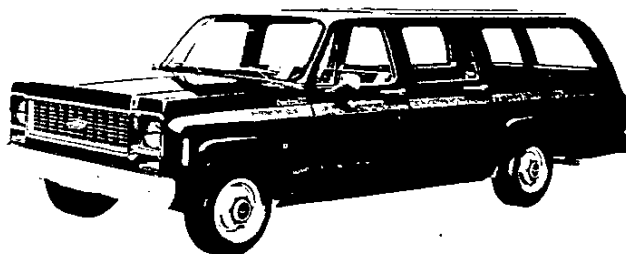
# SUBURBAN

## CUSTOM FEATURES—STANDARD MODEL

The Custom standard model includes the following items as standard equipment.

### EXTERIOR

- **Bright Appearance Items**
  - Chevrolet Emblem: At center of grille; with black and ochre trim
  - Custom Nameplate with series designation located on the upper portion of the front fenders near the door opening
  - "Suburban" Nameplate on RH rear door
  - Door Entry Handles
  - Door Lock Cylinder Assemblies
  - Grille Frame: Comprised of upper and lower moldings mating with extensions on headlamp bezels
  - Headlamp Bezels; with black trim
  - Mirrors: Chrome RH and LH
- **Bumpers:** Front and rear; painted white
- **Color:** See Exterior and Interior Color Selection Chart
- **Doors:** Four side doors: two LH and two RH; two rear panel doors (optional endgate with drop-glass available)
- **Door Opening and Locking Methods:**
  - Front side doors: outside pushbutton latch release in door handle with separate key lock cylinder; inside pushbutton latch on door, providing inside locking and keyless outside locking upon depression of pushbutton; door also may be locked from outside with key
  - Rear side doors: outside pushbutton latch release in door handle without exterior lock; inside pushbutton latch on door, providing inside and outside locking upon depression of pushbutton
  - Rear panel doors: three position door checks; RH door pushbutton latch release with separate key lock cylinder; LH door inside release
  - Optional endgate: exterior key lock concealed in the crank-type window regulator handle. The window must be lowered to reach the inner release handle and lower the endgate, which is supported by reel-type cables in the open position
- **Glass:**
  - Windshield; total visibility 1447 sq. in.
  - RH and LH front side door curved drop glass and ventipane; total visibility area 546 sq. in. each
  - RH & LH rear side door curved drop glass and fixed glass in rear section; total visibility area 488 sq. in. each
  - RH & LH fixed, curved rear side windows; total visibility area 1074 sq. in. each

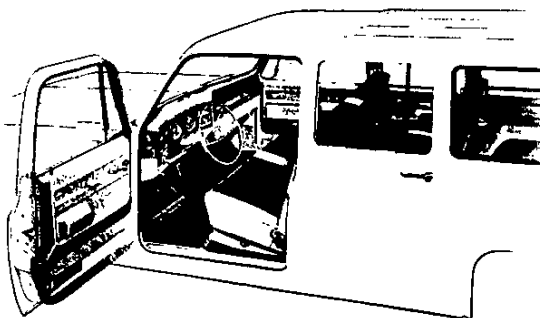


Rear panel doors have fixed curved glass in each door; total visibility area 654 sq. in.  
Optional endgate has a curved drop-glass; total visibility 1041 sq. in.

- **Grille:** Molded plastic; painted silver
- **Horn:** Single; low note; electric
- **Hub Caps:** Painted white with black and ochre trim (2-wheel-drive models only)
- **Keys:** Two key system with separate keys for doors and ignition switch
- **Lights**
  - Back-up lamps: Two rear (integral with taillamps)
  - Combination parking/direction/hazard: Two front
  - Combination tail/stop/direction/hazard: Two rear
  - Headlamps: Two; Power Beam
  - License Plate: Single rear
  - Side Marker and reflectors: Two front (wrap-around taillamps also serve as rear side marker lamps and reflectors)
- **Mirror:** RH & LH chrome fixed arm with 5 1/2" x 4" head
- **Tools:** Mechanical jack; wheel wrench
- **Undercoating:** On front and rear wheel housings
- **Wheels:** Painted white
- **Windshield Wipers and Washers:** Electric; 2-speed wipers with matte finish on exposed metal portions; partially concealed arms

### INTERIOR

- **Air Vents:** RH & LH Cowl side; individually controlled
- **Arm Rests:** RH & LH; integral with side door trim panels
- **Ash Trays:** Mounted middle of instrument panel and in rear side door trim panels
- **Coat Hooks:** RH and LH side over rear door openings
- **Colors:**
  - Paint: Same as exterior main color choice
  - Trim: Color choice of pearl gray, slate blue, saddle or slate green
- **Door Locks:** Inside, pushbutton lock/release (side doors only)
- **Door Seals:** Closed-cell-type rubber
- **Floor Mats:** Embossed black rubber; front (all models); center seat area (Series 20 models only)
- **Heater and Defroster:** Deluxe-air; automatic blower operation with ignition switch on for power ventilation system
- **Instruments**
  - Gauges: Speedometer, odometer and fuel
  - Switches: Exterior lights; instrument cluster and courtesy/map lights; wiper-washer; headlight beam (foot); ignition (mounted on steering column); direction signal with lane change position; hazard warning and heater
  - Warning Lights: Generator, oil pressure, engine temperature, brake warning, direction signals and high beam
- **Instrument Cluster Bright Trim:** Trim rings on gauges, warning lights, etc.
- **Instrument Panel Control Knobs:** Soft black plastic with white graphic identification (except heater and wiper-washer controls).
- **Instrument Panel Pad:** Foam with color-keyed grained finish, woodgrain trim and "Custom" nameplate
- **Interior Lights:** Instrument and courtesy/map operated by main light switch
- **Insulation and Sound Deadening Material:** Dash (firewall) and under the floor mats



- **Mirror, Rearview:** 10" vinyl edged prismatic
- **Pressure Relief Air Outlet Valve:** Located bottom of each side door; provides complete body ventilation with windows closed in conjunction with standard power ventilation system
- **Seats:** Full-width with color-keyed, embossed vinyl trim. Series 10 models—front seat only; Series 20 models—front seat plus folding center seat
- **Seat Belts:** For each seat position; pushbutton release; includes retractors for driver and RH front seat passenger
- **Steering Wheel, Column:** 16" black wheel (17 1/2" on 4-wheel-drive models) with 2-spoke design; black energy-absorbing steering column
- **Sunshades:** RH & LH padded; color-keyed
- **Scuff Plates:** Door opening protection and floor mat retainer
- **Spare Tire Carrier:** LH rear side
- **Trim Panels:** Color-keyed embossed molded plastic on side doors; painted steel panels on rear quarter areas

## SUBURBAN

### CUSTOM DELUXE MODEL OPTION—RPO Z62

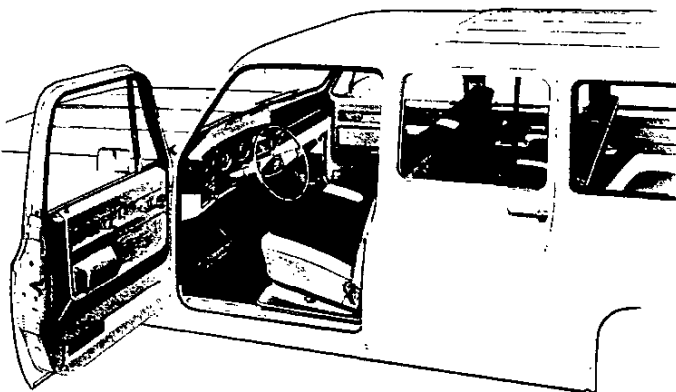
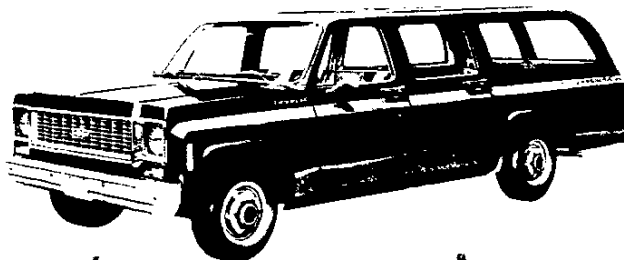
(This option includes all standard items plus the additions or substitutions listed below)

#### EXTERIOR

- **Bright Metal Appearance Items**  
"Custom Deluxe" nameplates with series designation on front fender  
Windshield reveal moldings
- **Door Handles** with black plastic inserts
- **Horn:** Additional; high note; electric

#### INTERIOR

- **Bright Metal Appearance Items**  
"Custom Deluxe" nameplate on instrument panel pad  
Dome lamp trim  
Full length front door sill scuffplates
- **Cigar Lighter**
- **Dome Lamps:** Two; 1 front, 1 rear
- **Dome and Courtesy Lamp Switches:** Front side door actuated (dome and courtesy lamps also may be activated by main light switch)
- **Floor Mat:** Color keyed rubber; front seat area (also in center and rear seat areas on Series 20 models, and on Series 10 models when center seat is ordered)
- **Headliner:** Full-length, pearl gray, perforated molded plastic with fiber glass blanket backing; includes matching retainer moldings
- **Insulation:** Under cowl panel; on headliner; under center seat floor mat on Series 20 models and on Series 10 models when center seat is ordered
- **Pillar Trim Panels:** Pearl gray molded plastic on windshield pillars and center door pillars
- **Seats:** Custom vinyl trim; herringbone striped nylon cloth and vinyl trim or special all-vinyl trim available at extra cost; extra-cost trims include full foam front seat cushion. See Interior and Exterior Color Selection Chart for color availability.
- **Spare Tire Cover:** Color keyed vinyl



### CHEYENNE SUPER MODEL OPTION—RPO YE9

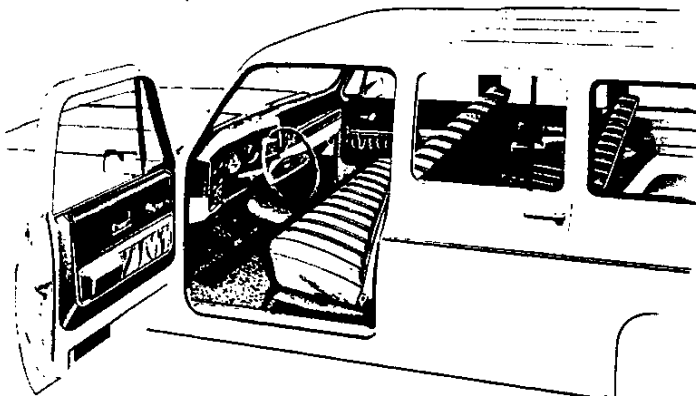
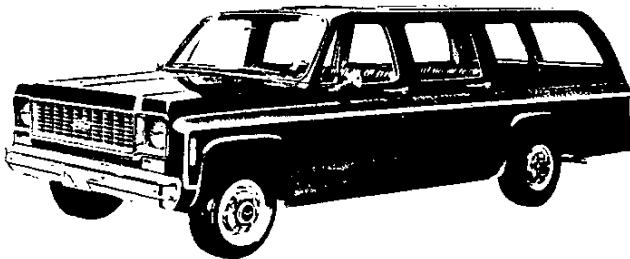
(This option includes all items in the "Custom Deluxe" model option plus the additions or substitutions listed below)

#### EXTERIOR

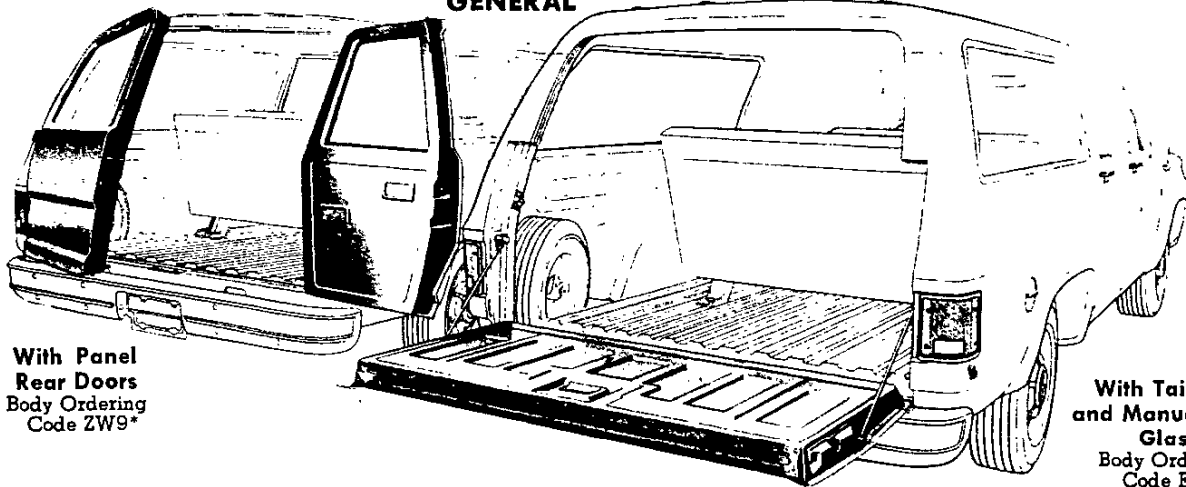
- **Bright Appearance Items**  
"Cheyenne Super" nameplates with series designation on front fenders  
Upper body side and rear door (or tailgate) moldings  
Chrome front and rear bumpers  
Parking/turn signal lamp, side marker lamp and taillamp trim  
Hub caps
- **Body-to-Fender Seals**
- **Hood Insulator**

#### INTERIOR

- **Bright Appearance Items**  
"Cheyenne Super" nameplate on instrument panel pad  
4-speed transmission shift lever  
Transfer case shift lever (K10-20 models)  
Trim on instrument cluster face plate, side door trim panels and Series C10-20 steering wheel
- **Carpeting:** Color-keyed; front seat area (also in center and rear seat areas and on wheelhouses on Series 20 models, and on Series 10 models when center seat is ordered)
- **Cowl Panel Trim:** Color-keyed molded plastic
- **Instrument Cluster:** Gauges replace warning lamps for ammeter, engine temperature and oil pressure; includes woodgrain trimmed face plate
- **Insulation:** Under front seat
- **Seats:** Full depth foam front seat cushion; choice of: 1) Special all-vinyl trim; 2) herringbone striped nylon cloth and vinyl trim. See Interior and Exterior Color Selection Chart for color availability
- **Side Door Trim Panels:** Color-keyed molded plastic (with vinyl storage pockets on front door units); includes woodgrain insert
- **Steering Wheel Trim:** Woodgrain insert on spokes (C10-20 models only)



## SUBURBAN GENERAL



**With Panel  
Rear Doors**  
Body Ordering  
Code ZW9\*

**With Tailgate  
and Manual Drop  
Glass**  
Body Ordering  
Code E55\*

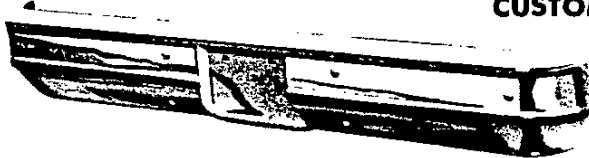
All Suburban models have 4 side doors, two right side and two left side. Front side doors are equipped with drop-glass and ventipane assemblies with a total visibility area of 546 square inches each. The rear side doors feature drop-glass in the forward portion and fixed glass in the rear portion with a total area of 488 square inches each. The rear quarter windows have fixed glass with an area of 1074 square inches each.

All Suburbans ordered by Body Ordering Code ZW9 have panel-type rear doors incorporating fixed glass with a total visibility area of 654 square inches. They feature two-position door checks which hold the doors open at either a 103-, 134- or 172-degree angle, plus positive fork-cam latches and an outside key lock.

All Suburbans ordered by Body Ordering Code E55 have a tailgate with manually-controlled curved drop glass having a total visibility area of 1041 square inches. Operation of the window is through an articulated crank-type regulator handle on the tailgate outer panel; a key lock cylinder is concealed in the regulator handle, and must be unlocked before the window can be lowered. After the window is lowered, the tailgate can be lowered by moving the release handle at the upper center of the tailgate inner panel. When the tailgate is open, it is supported by reel-type cables. Embossments on the tailgate inner panel facilitate loading of large objects. An optional electric tailgate window is available by ordering RPO A33.

\*Both models shown with optional center (standard on Series 20) and rear seats

### CUSTOM OPTIONS



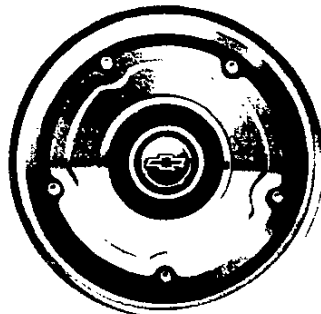
**Chrome Bumpers**  
(RPO V37)

Chrome front & rear bumpers are available optionally on all Suburban models.



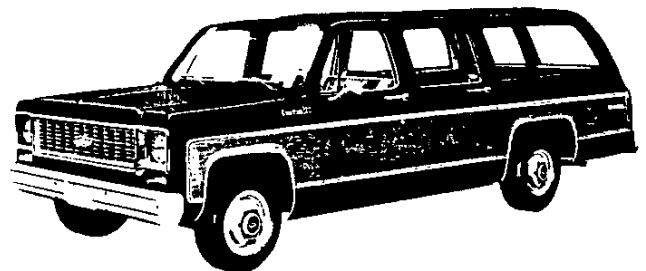
**Chrome Hub Caps**  
(RPO P03)

Chrome hub caps of the same design as the C10, 20 standard painted hub caps are available on all Suburban models. The front units for K10, 20 models have a cut-out at the center to clear the axle hubs.



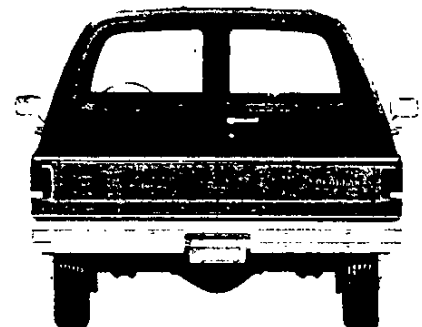
**Wheel Covers**  
(RPO P01)

Stainless steel wheel covers are available only on C10-20 and K10 Suburban models. The front units for K10 models have a cut-out at the center to clear the axle hubs.



**Custom Trim Moldings**  
(RPO B85, YG1)

Side and rear upper trim moldings (RPO B85) or side and rear upper and lower and wheel opening trim moldings (RPO YG1) of bright metal are offered on all Suburban models. These options include bright trim for parking, side marker and tail lamps.



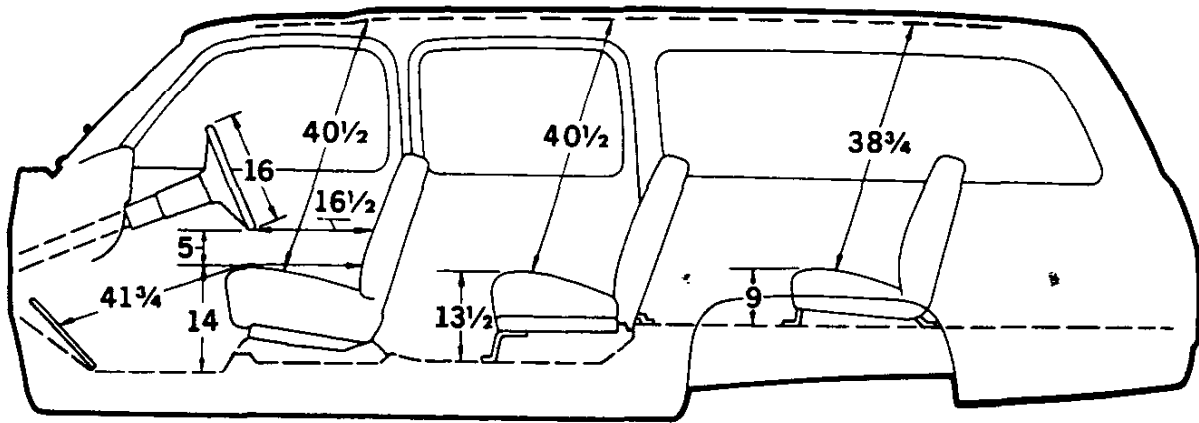
**Wood Grained Exterior Trim**  
(RPO YG2)

Wide wood grained applique mounted to entire length of body side panels, doors, front fenders and rear doors or tailgate between required upper and lower optional moldings (RPO YG1). Also includes "Estate" nameplates on body sides.



# SUBURBAN

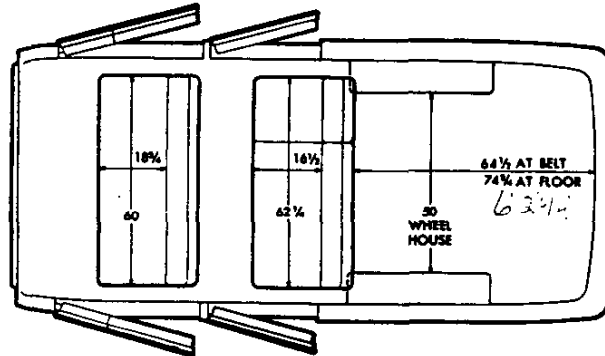
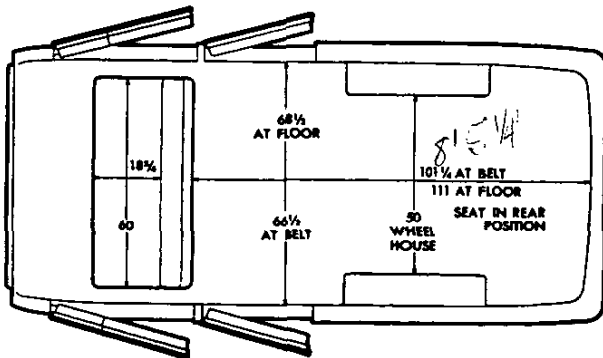
## DIMENSIONS



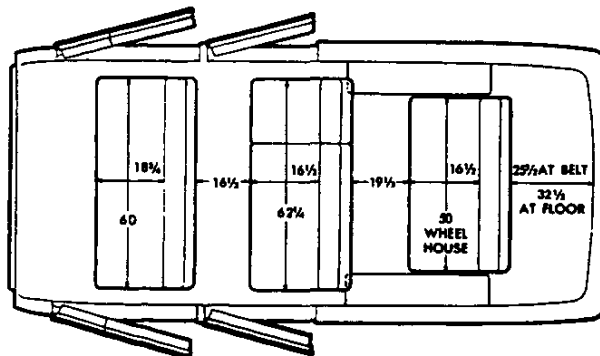
## SEATING ARRANGEMENTS

**Front Seat (C/K10 model only)**  
Standard or RPO Z52 full-depth foam front seat

**Front and Folding Center Seats**  
Standard front and RPO AT5 folding center seats (C/K10 models);  
Standard front and folding center seats (C/K20 models)



**Front, Folding Center And Rear Seats**  
Standard front, RPO AT5 folding center and RPO AS3 removable rear seats (C/K10 models);  
Standard front and folding center seats and RPO AS3 removable rear seat (C/K20 models)



# NOTES

# INTERIOR AND EXTERIOR COLOR CHARTS

All orders must show one of the following interior trim codes on the order form

## IMPORTANT

**Dealer Note:** Exterior and interior combinations shown in chart below are those recommended by Chevrolet; however, any exterior color may be ordered with any available interior color if the particular combination is desired by a customer.

## SUBURBAN

INTERIOR TYPE				† INTERIOR TRIM COLOR AND CODE			
				Slate Blue (RPO 673)	Green (RPO 675)	Pearl (RPO 671)	Saddle (RPO 674)
Standard Custom Interior —Vinyl Bench Seat				VDD1	VGG1	VPQ1	VSS1
Custom Deluxe (Z62) —Vinyl Bench Seat				VDD1	VGG1	VPQ1	VSS1
—Custom Cloth Bench Seat				LDD1			LSS1
—Custom Vinyl Bench Seat						XPQ1	XSS1
Cheyenne Super (YE9) —Custom Cloth Bench Seat				LDD1			LSS1
—Custom Vinyl Bench Seat						XPQ1	XSS1
MAIN EXTERIOR COLOR	Solid	Two-Tone					
		Conventional ●	Special ♦				
Beige, Granada	555	560	561			X	X
Blue, Skyline (Light)	503	539	591	X		X	X
Blue, Hawaiian (Medium)	510	542	586	X		X	X
Blue, Catalina (Dark)	508	578	592	X		X	X
Bronze, Grecian	506	556	594			X	X
Gold, Spanish	511	536	567			X	X
Gold, Sunset	527	537	587		X	X	X
Green, Killarney	568	569	570		X	X	X
Green, Lime	517	547	590		X	X	X
Green, Glenwood (Dark)	505	535	585		X	X	X
Olive, Moss	562	563	566		X	X	
Red, Crimson	514	544	582			X	X
Red, Rosedale (Dark)	515	541	593			X	X
Sand, Desert	528	538	588	X	X		X
White, Frost	521	—	—	X	X	X	X

● Available only when custom upper moldings or Cheyenne Super is ordered. Secondary color is white.

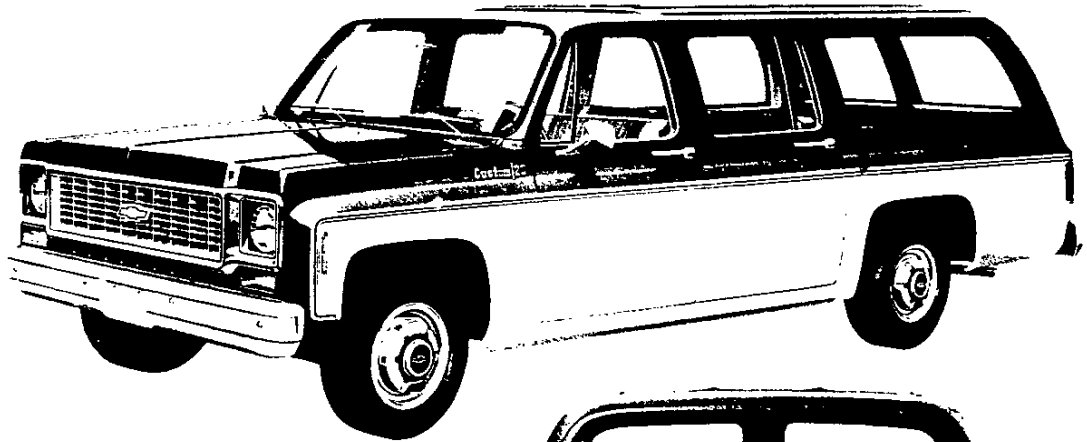
♦ Available only when custom upper and lower moldings are ordered. Secondary color is white.

†RPO Numbers listed under interior trim colors are for reference only and cannot be used for ordering purposes.

# SUBURBAN

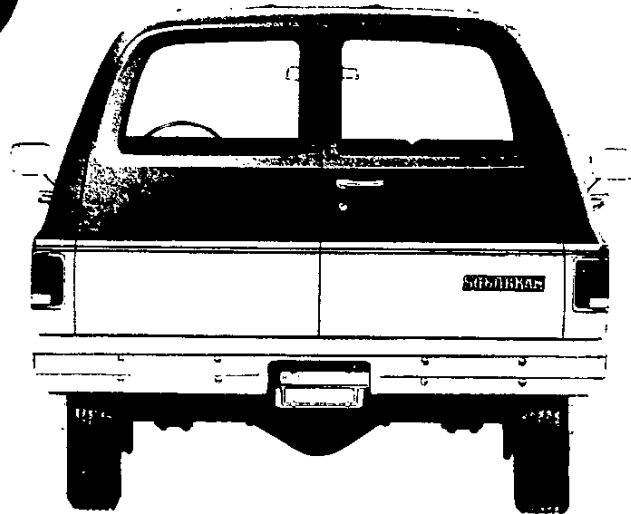
## TWO-TONE EXTERIOR COLOR COMBINATIONS\*

The application of paint for two-tone exterior color combinations is shown below and specified in two-tone chart.



### CONVENTIONAL TWO-TONE

Requires custom upper moldings (RPO B85) or Cheyenne Super Model Option. All body areas below the moldings are painted Frost White. The areas above the moldings are painted the main body color.



### SPECIAL TWO-TONE

Requires custom upper and lower moldings (RPO YG1). The areas between the moldings are painted Frost White. The areas above and below the moldings are painted the main body color.

\*Optional at extra cost

# SUBURBAN

## GVW SELECTOR

†Maximum Ratings			Minimum Equipment Required for GVW Rating		
GVW Rating (lb)	★GAWR (lb)		Tires, Front	Tires, Rear	Chassis Equipment
	Front	Rear			

### C10 SERIES

5400	2946	2946	G78-15B(4PR) (TL or TB)	G78-15B(4PR) (TL or TB)	Standard
6000	3218	3218	H78-15B(4PR) (TL)	H78-15B(4PR) (TL)	HD front (F60) and HD rear (G50) springs; HD Power Brakes (J55)
*6800	3250	3750	LR78-15C(6PR) (TL)	LR78-15C(6PR) (TL)	HD front (F60) and HD rear (G50) springs; Stabilizer Bar (F59); HD Power Brakes (J55)
			L78-15D(8PR) (TL)	L78-15D(8PR) (TL)	
*7000	3250	3750	LR78-15C(6PR) (TL)	LR78-15C(6PR) (TL)	HD rear springs (G50); Stabilizer Bar (F59); 454-4 V8 (LF8); HD Power Brakes (J55)
			L78-15D(8PR) (TL)	L78-15D(8PR) (TL)	

### C20 SERIES

7100	3500	3980	8.75-16.5C(6PR) (TL) (TT)	8.75-16.5C(6PR) (TL) (TT)	Standard
7500	3500	5200	9.50-16.5D(8PR) (TL) (TT)	9.50-16.5D(8PR) (TL) (TT)	HD rear springs (G50); HD Power Brakes (J55)
			7.50-16E(10PR) (TB) (TT)	7.50-16E(10PR) (TB) (TT)	
8200	3800	5560	9.50-16.5D(8PR) (TL) (TT)	9.50-16.5D(8PR) (TL) (TT)	HD front springs (F60); 2850-lb ea rear springs (G51); HD Power Brakes (J55)
			7.50-16E(10PR) (TB) (TT)	7.50-16E(10PR) (TB) (TT)	

### K10 SERIES

5600	2946	2946	G78-15B(4PR) (TL or TB)	G78-15B(4PR) (TL or TB)	Standard
6000	3218	3218	H78-15B(4PR) (TL)	H78-15B(4PR) (TL)	HD Front stabilizer bar (F58); HD Power Brakes (J55)
			6.50-16C(6PR) (TB) (TT)	6.50-16C(6PR) (TB) (TT)	
*6600	3400	3582	L78-15B(4PR) (TL)	L78-15B(4PR) (TL)	
			7.00-16C(6PR) (TT)	7.00-16C(6PR) (TT)	
*7150	3400	3750	LR78-15C(6PR) (TL)	LR78-15C(6PR) (TL)	
			L78-15D(8PR) (TL)	L78-15D(8PR) (TL)	

### K20 SERIES

6800	3500	3980	8.75-16.5C(6PR) (TL) (TT)	8.75-16.5C(6PR) (TL) (TT)	Standard
		4120	7.50-16C(6PR) (TB) (TT)	7.50-16C(6PR) (TB) (TT)	
7500	3500	4700	8.75-16.5C(6PR) (TL) (TT)	8.75-16.5D(8PR) (TL) (TT)	HD Front stabilizer bar (F58); HD Power Brakes (J55)
		4880	7.50-16C(6PR) (TB) (TT)	7.50-16D(8PR) (TB) (TT)	
8200	3500	5560	9.50-16.5D(8PR) (TL) (TT)	9.50-16.5D(8PR) (TL) (TT)	
			7.50-16C(6PR) (TB) (TT)	7.50-16E(10PR) (TB) (TT)	

†GAWR's shown are the maximum for each axle. When ordering a truck the total of the actual weight on both front and rear axles cannot exceed the total GVW rating.

★GAWR—Gross Axle Weight Rating

TL—Tubeless      TB—Tube Type      TT—Truck Type

\*Requires AT5 or AS3 Optional seating.

# SUBURBAN

## POWER TEAMS

ENGINES	TRANSMISSIONS	REAR AXLES	
Description and Application (Standard or Optional)	Type (Standard or Optional)	Type and Capacity	Ratios

### C10 SERIES

			Ratio	3.07	3.40	3.73	4.11
			Code	HE3	HE4	GT4	HO4
● 250-1/SE Six Engine Ordering Code LD4	3-Speed Manual (Std)—ZW4	Chevrolet 3750♦		—	—	X(Std)	X
	4-Speed (Chevrolet CH465)—M20	Chevrolet 3750♦		—	—	X(Std)	X
	Turbo Hydra-matic—M40	Chevrolet 3750♦		—	—	X(Std)	—
■ 350-4/SE V8 Engine Ordering Code LS9	3-Speed Manual (Std)—ZW4 N/A California Registration	Chevrolet 3750♦		—	X(Std)	X	—
	4-Speed (Chevrolet CH465)—M20 N/A California Registration	Chevrolet 3750♦		—	X(Std)	X	—
	Turbo Hydra-matic—M40 Without California Emission Certification	Chevrolet 3750♦		X(Std)	X	X	—
	With California Emission Certification	Chevrolet 3750♦		—	X	X(Std)	—
■ 454-4/SE V8 Option LF8	Turbo Hydra-matic (Std)—M40	Chevrolet 3750♦		X(Std)	X	X	—

### C20 SERIES

			Ratio	3.21	3.73	4.10
			Code	HC8	GT4	GT5
■ 454-4/SE V8 Option LF8	Turbo Hydra-matic (Std)—M40 Without Trailering Special	Chevrolet 3750♦		X	X(Std)	X●
	With Trailering Special	Chevrolet 3750♦		X	X(Std)	X●

- ♦ Locking Differential rear axle also available.
- Available for registration in the State of California when California Emission Certification is ordered.
- Not available for registration in the State of California.

### ENGINE RATINGS

(Engine ratings shown below are S.A.E. net ratings @ 85°F)

	250-1/SE Six	350-4/SE V8	454-4/SE V8
Net Horsepower.....	100 @ 3600 rpm	160 @ 3800 rpm	230 @ 4000 rpm
Net Torque, lb-ft.....	175 @ 1800 rpm	250 @ 2400 rpm	350 @ 2800 rpm

# SUBURBAN

## POWER TEAMS

ENGINES	TRANSMISSIONS	Transfer Case	REAR AXLES	
Description and Application (Standard or Optional)	Type (Standard or Optional)		Type and Capacity	Ratios

### K10 SERIES

● 350-4/SE V8 Engine Ordering Code LS9	3-Speed Manual (Std) — ZW4	New Process #203	Chevrolet 3750 ♦	Ratio	3.07 *	3.73	4.11
				Code	HE3	GT4	HO4
	4-Speed (Chevrolet CH465) — M20	New Process #203	Chevrolet 3750 ♦		X(Std)	X	X
	Turbo Hydra-matic — M40	New Process #203	Chevrolet 3750 ♦		X(Std)	X	X

### K20 SERIES

● 350-4/SE V8 Engine Ordering Code LS9	3-Speed Manual (Std) — ZW4	New Process #203	Chevrolet 5700 ♦	Ratio	4.10
				Code	GT5
	4-Speed (Chevrolet CH465) — M20	New Process #203	Chevrolet 5700 ♦		X(Std)
	Turbo Hydra-matic — M40	New Process #203	Chevrolet 5700 ♦		X(Std)

- ♦ Locking Differential rear axle also available.
- Not available for registration in the State of California.

### ENGINE RATINGS

*(Engine ratings shown below are S.A.E. net ratings @ 85° F)*

	350-4/SE V8
Net Horsepower.....	160 @ 3800 rpm
Net Torque, lb-ft.....	250 @ 2400 rpm

## SUBURBAN 1974 VEHICLES WITH STANDARD EQUIPMENT

Prices shown are effective with vehicles produced commencing December 13, 1973

Description	Model Number	Code	Wheel-base	Factory D&H <sup>†</sup>	List Price	Mfr's Suggested Retail Price*	Destination Charge & Group Number	Total
◆ 6-Cylinder High Torque 250-1/SE Engine—Engine Ordering Code LD4								
<b>C10 Series 2-Wheel Drive</b>								
Panel Doors .....	CC10906	ZW9	129.5"	13.90	3818.00	3831.90	16.....	
End Gate .....	CC10906	E55	129.5"	13.90	3849.00	3862.90	16.....	
◆ 8-Cylinder High Torque 350-4/SE Engine—Engine Ordering Code LS9								
<b>C10 Series 2-Wheel Drive</b>								
Panel Doors .....	CC10906	ZW9	129.5"	13.90	3981.00	3994.90	16.....	
End Gate .....	CC10906	E55	129.5"	13.90	4012.00	4025.90	16.....	
<b>K10 Series 4-Wheel Drive</b>								
Panel Doors .....	CK10906	ZW9	129.5"	13.90	4801.00	4814.90	17.....	
End Gate .....	CK10906	E55	129.5"	13.90	4832.00	4845.90	17.....	
<b>K20 Series 4-Wheel Drive</b>								
Panel Doors .....	CK20906	ZW9	129.5"	15.00	5261.00	5276.00	17.....	
End Gate .....	CK20906	E55	129.5"	15.00	5292.00	5307.00	17.....	
◆ 8-Cylinder High Torque 454-4/SE Engine—Engine Ordering Code LFB								
<b>C20 Series 2-Wheel Drive</b>								
Panel Doors .....	CC20906	ZW9	129.5"	15.00	4887.00	4902.00	18.....	
End Gate .....	CC20906	E55	129.5"	15.00	4918.00	4933.00	18.....	

\* Manufacturer's Suggested Retail Prices do not include applicable destination charges, state and local taxes, license fees, options or accessories.  
 ◆ Refer to Power Team Chart for California Emission Certification Requirements.

## OPTIONS AND ACCESSORIES WHEN INSTALLED BY CHEVROLET

Prices shown are effective with vehicles produced commencing December 13, 1973

Description	Added Weight (F) (R)	Option Number	Factory D&H <sup>†</sup>	List Price	Mfr's Suggested Retail Price◇
<b>POWER TEAMS AND AXLES</b>					
<i>(See Power Teams Chart for availability and complete specifications)</i>					
<b>Engine: 454-4/SE V8.</b> C10 series only. Available only when J55 brakes and M40 Turbo Hydra-matic transmission are specified. Includes UA1 HD battery, N41 power steering, 4-barrel carburetor, 1625-lb each front springs and 12" clutch. Available for registration in the State of California when YF5 California emission Certification is specified. ....					
	169	27	LFB	N.C.	327.00 327.00
<b>Transmissions:</b>					
<i>Turbo Hydra-matic.</i> K20 series includes extra HD cooling.					
With LD4 250-1/SE engine. C10 series only .....	22	7	M40	N.C.	246.00 246.00
With LS9 350-4/SE engine.					
C-K10 series only .....	17	7	M40	N.C.	246.00 246.00
K20 series only .....	11	3	M40	N.C.	246.00 246.00
With LFB 454-4/SE engine. C10 series only. Includes N41 power steering and UA1 HD battery .....	29	11	M40	N.C.	256.00 256.00
<i>Chevrolet 4-Speed.</i> Not available when LFB 454-4/SE engine is specified.					
C10 series only. Not available for registration in the State of California.					
With 6-Cylinder engine. Includes M01 11" clutch .....	78	21	M20	N.C.	113.00 113.00
With V8 engine. Available when J55 brakes are specified. ....	82	35	M20	N.C.	113.00 113.00
K10-20 series only .....	78	21	M20	N.C.	113.00 113.00
<b>Axles, Rear:</b>					
<i>Optional Ratio (See Power Teams Charts for option number selection)</i> .....	0	0	...	N.C.	13.00 13.00
<i>Locking Differential</i> .....	0	7	G80	N.C.	137.00 137.00

† D&H amounts reflect provision for pass through of tire weight tax imposed on manufacturer or importer of tires.  
 ◇ State and local taxes not included.



# SUBURBAN

## OPTIONS AND ACCESSORIES WHEN INSTALLED BY CHEVROLET

Prices shown are effective with vehicles produced commencing December 13, 1973

Description	Added Weight (F) (R)	Option Number	Factory D&H <sup>§</sup>	List Price	Mfr's Suggested Retail Price <sup>◇</sup>
<b>MODEL OPTIONS</b>					
<i>(See Interior and Exterior Color Selection Chart)</i>					
<b>Custom Deluxe:</b> Includes black door handle inserts; bright windshield molding; dual horns; nameplates on front fender and instrument panel; pearl colored headliner and moldings; U37 cigar lighter; C91 door actuated dome lamps with bright bezels; color-keyed vinyl coated floor mats with bright sill plates; special insulation; pearl colored plastic windshield pillar and center door pillar trim panels. Also includes spare tire cover when spare tire is specified.					
With standard vinyl seat.					
When AS3 rear or center and rear seats are not specified. . . .	31 50	Z62	N.C.	123.00	123.00
When AT5 center or AS3 rear or center and rear seats are specified . . . . .	33 34	Z62	N.C.	123.00	123.00
With custom cloth or custom vinyl seat. Also includes Z52 full-depth foam front seat.					
When AS3 center and rear seats are not specified on C-K10 series only. . . . .	31 50	Z62	N.C.	182.00	182.00
When AT5 center seat is specified on C-K10 series or when C-K20 series is specified . . . . .	33 54	Z62	N.C.	212.00	212.00
When AS3 center and rear seats are specified . . . . .	33 54	Z62	N.C.	242.00	242.00
<b>Cheyenne Super:</b> With custom cloth or custom vinyl seats only. Includes V37 chromed front and rear bumpers; bright body side upper, taillight and rear door or tailgate moldings; P03 bright metal hub caps; bright front turn signal and front side marker lamp bezels; Cheyenne Super fender nameplate; black door handle inserts; bright windshield molding; Z52 full-depth foam seat; color-keyed carpeting with bright sill plates; plastic door trim panels with storage pockets and wood-grained accents; wood-grained instrument cluster with Z53 ammeter, oil pressure and temperature gauges; dual horns; Cheyenne Super nameplate on instrument panel; U37 cigar lighter; pearl colored headliner and moldings; C91 door actuated dome lamps with bright bezels; special insulation; pearl colored plastic windshield pillar and center door pillar trim panels. Also includes spare tire cover when spare tire is specified.					
C10-20 series only. Also includes N31 custom steering wheel.					
When AS3 or AT5 seats are not specified. C10 series only . . . .	27 45	YE9	N.C.	397.00	397.00
When AT5 center seat is specified on C10 series without AS3 seats or C20 series without AS3 seats. Also includes load area and rear wheelhousing carpeting . . . . .	29 49	YE9	N.C.	479.00	479.00
When AS3 seats are specified. Also includes load area carpeting . . . . .	29 49	YE9	N.C.	509.00	509.00
K10-20 series only.					
When AS3 or AT5 seats are not specified. K10 series only . . . .	29 47	YE9	N.C.	390.00	390.00
When AT5 center seat is specified on K10 series without AS3 seats or K20 series without AS3 seats. Also includes load area and rear wheelhousing carpeting . . . . .	31 51	YE9	N.C.	472.00	472.00
When AS3 rear or center and rear seats are specified. Also includes load area carpeting. . . . .	31 51	YE9	N.C.	502.00	502.00

<sup>§</sup> D&H amounts reflect provision for pass through of tire weight tax imposed on manufacturer or importer of tires.  
<sup>◇</sup> State and local taxes not included.

## SUBURBAN

### OPTIONS AND ACCESSORIES WHEN INSTALLED BY CHEVROLET

Prices shown are effective with vehicles produced commencing December 13, 1973

Description	Added Weight (F) (R)	Option Number	Factory D&H <sup>‡</sup>	List Price	Mfr's Suggested Retail Price <sup>◇</sup>
<b>OTHER OPTIONS</b>					
<b>Air Cleaner: Poly-Wrap</b> .....	0 0	K43	N.C.	11.00	11.00
<b>Air Conditioning:</b> With V8 engine only. Includes extra HD cooling and K76 61-amp generator.					
<i>Front.</i> Recommended for front seat area cooling only.					
Without Z62 Custom Deluxe or YE9 Cheyenne Super. Also includes BB5 headliner.					
C-K10 series only.					
Without LS9 350-4/SE engine. C10 series only .....	98 32	C60	N.C.	507.00	507.00
With LS9 350-4/SE engine .....	102 34	C60	N.C.	507.00	507.00
C20 series only .....	96 32	C60	N.C.	507.00	507.00
K20 series only.					
Without M40 Turbo Hydra-matic transmission .....	105 34	C60	N.C.	507.00	507.00
With M40 Turbo Hydra-matic transmission .....	97 33	C60	N.C.	507.00	507.00
With Z62 Custom Deluxe or YE9 Cheyenne Super.					
C-K10 series only.					
Without LS9 350-4/SE engine. C10 series only .....	90 9	C60	N.C.	430.00	430.00
With LS9 350-4/SE engine .....	94 11	C60	N.C.	430.00	430.00
C20 series only .....	88 9	C60	N.C.	430.00	430.00
K20 series only.					
Without M40 Turbo Hydra-matic transmission .....	97 11	C60	N.C.	430.00	430.00
With M40 Turbo Hydra-matic transmission .....	89 9	C60	N.C.	430.00	430.00
<i>Independent Front and Rear Roof Mounted.</i> Available only when Z62 Custom Deluxe or YE9 Cheyenne Super is specified. Rear system operates on recirculating air.					
C-K10 series only.					
Without LS9 350-4/SE engine. C10 series only .....	107 46	C69	N.C.	666.00	666.00
With LS9 350-4/SE engine .....	111 48	C69	N.C.	666.00	666.00
C20 series only .....	104 46	C69	N.C.	666.00	666.00
K20 series only.					
Without M40 Turbo Hydra-matic transmission .....	114 48	C69	N.C.	666.00	666.00
With M40 Turbo Hydra-matic transmission .....	106 47	C69	N.C.	666.00	666.00
<b>Batteries:</b> 12-volt.					
<i>Auxiliary.</i> 61-amp-hr. 9-plate.					
C10 or K10-20 series only .....	51 -7	TP2	N.C.	58.00	58.00
C20 series only .....	49 -7	TP2	N.C.	58.00	58.00
<i>Heavy-Duty.</i> 80-amp-hr. 15-plate. C-K10 or K20 series only. Included when LF8 454-4/SE engine is specified.					
With LD4 250-1/SE 6-cylinder engine .....	14 -2	UA1	N.C.	16.00	16.00
With LF8 454-4/SE or LS9 350-4/SE V8 engine. Included when Z82 Trailering Special or Z56 Cold-Climate Package is specified .....	2 0	UA1	N.C.	16.00	16.00
<b>Brakes, Heavy-Duty: Power.</b>					
C-K10 series only .....	0 0	J55	N.C.	37.00	37.00
C-K20 series only .....	4 14	J55	N.C.	37.00	37.00
<b>Bumpers: Chromed.</b> Front and rear. Included when YE9 Cheyenne Super is specified .....					
	0 0	V37	N.C.	33.00	33.00
<b>California Emission Certification:</b> C10-20 series only. Includes all testing, equipment and/or certification necessary for registration in the State of California (See Power Teams Charts for availability and complete specifications) .....					
	12 0	YF5	N.C.	21.00	21.00
<b>Carpeting, Floor and Wheelhouse:</b> C-K10 series available only when Z62 Custom Deluxe and AT5 center or AS3 center and rear seats are specified. C-K20 series available only when Z62 Custom Deluxe is specified. Includes black carpeting when pearl or green trim is specified or color-keyed carpeting when blue or saddle trim is specified. ....					
	6 46	B30	N.C.	84.00	84.00
<b>Clock, Electric:</b> Available only when Z53 ammeter, temperature and oil pressure gauges or YE9 Cheyenne Super is specified. Not available when U16 tachometer is specified. ....					
	0 0	U35	N.C.	19.50	19.50
<b>Clutch, Heavy-Duty:</b> Diameter 11". C10 series only. Available only when LD4 250-1/SE engine and ZW4 3-speed transmission are specified. ....					
	2 1	M01	N.C.	7.00	7.00

<sup>‡</sup> D&H amounts reflect provision for pass through of tire weight tax imposed on manufacturer or importer of tires.  
<sup>◇</sup> State and local taxes not included.

# SUBURBAN

## OPTIONS AND ACCESSORIES WHEN INSTALLED BY CHEVROLET

Prices shown are effective with vehicles produced commencing December 13, 1973

Description	Added Weight (F) (R)	Option Number	Factory D&H <sup>1</sup>	List Price	Mfr's Suggested Retail Price <sup>2</sup>	
<b>OTHER OPTIONS</b>						
<b>Cold-Climate Package:</b> Not available when C60 or C69 air conditioning or K79 42-amp generator is specified. Includes 55-amp generator, super heater and defroster, engine block heater and anti-freeze protection to -40 degrees. C-K10 or K20 series without Trailing Special also includes UA1 HD battery.						
C-K10 or K20 series only.						
With LD4 250-1/SE 6-cylinder engine.....	16	-2	Z56	N.C.	82.00	82.00
With LS9 350-4/SE V8 engine.						
Without Z82 Trailing Special .....	4	0	Z56	N.C.	82.00	82.00
With Z82 Trailing Special .....	4	0	Z56	N.C.	66.00	66.00
With LF8 454-4/SE engine .....	4	0	Z56	N.C.	66.00	66.00
C20 series only .....	2	0	Z56	N.C.	66.00	66.00
<b>Cooler, Engine Oil:</b> With V8 engine only .....	13	-1	KC4	N.C.	70.00	70.00
<b>Cooling:</b> HD radiator only. Not available when C60 or C69 air conditioning is specified.						
C-K10 series only.						
With LD4 250-1/SE or LF8 454-4/SE engine. C10 series only	4	-1	V01	N.C.	26.00	26.00
With LS9 350-4/SE engine .....	8	-1	V01	N.C.	26.00	26.00
K20 series only. Not available when M40 Turbo Hydra-matic transmission is specified .....	8	-1	V01	N.C.	26.00	26.00
<b>Gauges:</b>						
<b>Ammeter, temperature and oil pressure.</b> Included when YE9 Cheyenne Super or U16 tachometer is specified .....						
	1	0	Z53	N.C.	13.00	13.00
<b>Tachometer.</b> With V8 engine only. Not available when U35 electric clock is specified.						
Without YE9 Cheyenne Super. Includes Z53 ammeter, temperature and oil pressure gauges .....						
	2	0	U16	N.C.	60.00	60.00
With YE9 Cheyenne Super .....	1	0	U16	N.C.	47.00	47.00
<b>Generators:</b>						
<b>42-amp Delcotron.</b> Not available when C60 or C69 air conditioning or Z56 Cold-Climate Package is specified .....						
	0	0	K79	N.C.	25.00	25.00
<b>61-amp Delcotron.</b> Included when C60 or C69 air conditioning is specified.						
Without Z56 Cold-Climate Package .....	1	0	K78	N.C.	33.00	33.00
With Z56 Cold-Climate Package .....	1	0	K78	N.C.	N.C.	N.C.
<b>Glass, Soft-Ray:</b> All windows .....	0	0	A01	N.C.	33.00	33.00
<b>Grille, Chromed</b> .....	0	0	V22	N.C.	21.00	21.00
<b>Guards, Door Edge:</b> Not available when YG2 wood-grained exterior trim is specified .....						
	0	0	B93	N.C.	9.00	9.00
<b>Headliner, Interior:</b> Included when Z62 Custom Deluxe, YE9 Cheyenne Super, C60 or C69 air conditioning is specified. Includes C91 door actuated dome lamp .....						
	8	23	BB5	N.C.	82.00	82.00
<b>Instrument Panel, Wood-Grained:</b> Available only when Z53 ammeter, temperature and oil pressure gauges are specified. Not available when YE9 Cheyenne Super is specified .....						
	0	0	BC2	N.C.	28.50	28.50
<b>Lamps:</b>						
<b>Dome.</b> Two. Included when BB5 headliner, Z62 Custom Deluxe or YE9 Cheyenne Super is specified. Includes door actuated switches and bright bezels .....						
	0	0	C91	N.C.	19.00	19.00
<b>Roof Marker.</b> Five. Not available for registration in the State of California .....						
	3	1	U01	N.C.	28.00	28.00
<b>Lighter, Cigar:</b> Included when Z62 Custom Deluxe or YE9 Cheyenne Super is specified .....						
	0	0	U37	N.C.	5.50	5.50
<b>Mirrors, Exterior:</b> LH and RH.						
<b>Below-Eye-Line Type.</b> 7.5" x 10.5". Provides field of vision for vehicles to 80" wide.						
Painted .....	3	1	D29	N.C.	20.50	20.50
Stainless Steel .....	3	1	DG4	N.C.	37.00	37.00
<b>Camper Type.</b> Stainless steel. Includes below-eye-line mirrors with adjustable arm feature to provide field of vision for vehicles to 86" wide .....						
	7	2	DF2	N.C.	54.00	54.00

<sup>1</sup> D&H amounts reflect provision for pass through of tire weight tax imposed on manufacturer or importer of tires.  
<sup>2</sup> State and local taxes not included.

# SUBURBAN

## OPTIONS AND ACCESSORIES WHEN INSTALLED BY CHEVROLET

Prices shown are effective with vehicles produced commencing December 13, 1973

Description	Added Weight (F) (R)	Option Number	Factory D&H <sup>‡</sup>	List Price	Mfr's Suggested Retail Price <sup>◇</sup>
<b>OTHER OPTIONS</b>					
<b>Moldings, Custom:</b>					
<i>Roof Drip</i> .....	1 1	BX5	N.C.	19.00	19.00
<i>Upper.</i> Not available when YG2 wood-grained exterior trim or special two-tone paint is specified. Included when YE9 Cheyenne Super is specified. Includes fender, door, rear side panel, rear door or tailgate moldings plus bright front turn signal, front side marker and taillight trim. ....					
<i>Upper and Lower.</i> Not available when conventional two-tone paint is specified. ....	2 3	B85	N.C.	49.00	49.00
<i>Without</i> YE9 Cheyenne Super. Also includes B85 upper moldings described above plus lower body side, rear door or tailgate and wheel opening moldings. ....					
<i>With</i> YE9 Cheyenne Super. Includes lower body side, rear door or tailgate and wheel opening moldings. ....	3 4	YG1	N.C.	116.00	116.00
<i>Without</i> YE9 Cheyenne Super. Includes lower body side, rear door or tailgate and wheel opening moldings. ....	3 4	YG1	N.C.	67.00	67.00
<b>Paints, Exterior:</b> See Interior and Exterior Color Selection Chart for ordering information .					
<i>Solid</i> .....	0 0	...	N.C.	N.C.	N.C.
<i>Conventional Two-Tone.</i> With white secondary color. Available only when B85 custom upper moldings or YE9 Cheyenne Super is specified. Not available when YG1 custom upper and lower moldings are specified. ....					
<i>Special Two-Tone.</i> Area between upper and lower side moldings painted white. Available only when YG1 custom upper and lower moldings are specified. ....	0 0	...	N.C.	44.00	44.00
<i>Special Two-Tone.</i> Area between upper and lower side moldings painted white. Available only when YG1 custom upper and lower moldings are specified. ....	0 0	...	N.C.	66.00	66.00
<b>Plate, Fuel Tank Shield:</b>					
C10-20 series only. ....	-8 53	NY1	N.C.	29.00	29.00
K10-20 series only. Includes transfer case skid plate. ....	-8 53	NY1	N.C.	55.00	55.00
<b>Plate:</b> Serial Number (State of Pennsylvania) "K" Plate. Not required on C10-20 series. K10 series available only when J55 brakes, F58 HD front stabilizer, AT5 or AS3 seats and LK or LL L78-15/D or larger tires are specified. K20 series available only when F58 HD front stabilizer and J55 brakes are specified. Not available when PB or PC 7.50-16/C, TC or TB 8.75-16.5/C rear tires are specified. ....					
<i>Plate:</i> Serial Number (State of Pennsylvania) "K" Plate. Not required on C10-20 series. K10 series available only when J55 brakes, F58 HD front stabilizer, AT5 or AS3 seats and LK or LL L78-15/D or larger tires are specified. K20 series available only when F58 HD front stabilizer and J55 brakes are specified. Not available when PB or PC 7.50-16/C, TC or TB 8.75-16.5/C rear tires are specified. ....	0 0	Z55	N.C.	N.C.	N.C.
<b>Radios:</b> Pushbutton. Includes antenna.					
<i>AM</i> .....	7 2	U63	N.C.	67.00	67.00
<i>AM/FM</i> .....	7 2	U69	N.C.	145.00	145.00
<b>Seat, Front:</b> Full-Depth Foam. Included when Z62 Custom Deluxe with custom cloth or vinyl seat or YE9 Cheyenne Super is specified					
<i>Seat, Front:</i> Full-Depth Foam. Included when Z62 Custom Deluxe with custom cloth or vinyl seat or YE9 Cheyenne Super is specified	-1 -1	Z52	N.C.	30.00	30.00

<sup>‡</sup> D&H amounts reflect provision for pass through of tire weight tax imposed on manufacturer or importer of tires.  
<sup>◇</sup> State and local taxes not included.

# SUBURBAN

## OPTIONS AND ACCESSORIES WHEN INSTALLED BY CHEVROLET

Prices shown are effective with vehicles produced commencing December 13, 1973

Description	Added Weight (F) (R)	Option Number	Factory D&H <sup>1</sup>	List Price	Mfr's Suggested Retail Price <sup>2</sup>
<b>OTHER OPTIONS</b>					
<b>Seats, Rear:</b> Seat trim matches front seat whether standard or optional. Includes seat area floor covering, floor insulation and (3) seat belts.					
<i>Center only.</i> Fixed type with independent LH and RH folding sections. Standard on C-K20 series.					
C10 series only. Available only when J55 brakes, HL, HM or HR H78-15/B or larger tires are specified. Includes F60 HD front springs and G50 HD rear springs.					
Without LF8 454-4/SE engine	162 521	AT5	N.C.	174.00	174.00
With LF8 454-4/SE engine	155 521	AT5	N.C.	174.00	174.00
K10 series only. Available only when J55 brakes, HL, HM or HR H78-15/B or larger tires and F58 HD front stabilizer are specified.					
	155 445	AT5	N.C.	174.00	174.00
<i>Center and Rear.</i> C-K10 series only. Available only when J55 Brakes and F58 or F59 front stabilizer is specified. Includes fixed center and removable type rear seats, (3) additional seat belts plus LH and RH rear arm rests with ash trays.					
C10 series only. Available only when CD LR78-15/C or larger tires are specified. Also includes F60 HD front and G50 HD rear springs.					
Without LF8 454-4/SE engine	109 1115	AS3	N.C.	307.00	307.00
With LF8 454-4/SE engine	105 1115	AS3	N.C.	307.00	307.00
K10 series only. Available only when LB, LD or LC L78-15/Bor larger tires are specified.					
	101 1039	AS3	N.C.	307.00	307.00
<i>Rear only.</i> C-K20 series only. Removable type seat. In addition to production center seat. Also includes LH and RH arm rests with ash trays					
	-50 594	AS3	N.C.	124.00	124.00
<b>Shock Absorbers, Heavy-Duty:</b>					
<i>Front and Rear</i>	3 3	F51	N.C.	16.00	16.00
<i>Rear</i>	0 3	G68	N.C.	9.00	9.00
<b>Speed and Cruise Control:</b> Available only when V8 engine and M40 Turbo Hydra-matic transmission is specified					
	5 0	K30	N.C.	65.00	65.00
<b>Springs:</b>					
<i>Front, Heavy-Duty.</i>					
Capacity 1625-lb each. C10 series only. Included when LF8 454-4/SE engine, AT5 or AS3 seats are specified					
	4 0	F60	N.C.	6.50	6.50
Capacity 1900-lb each. C20 series only					
	-3 0	F60	N.C.	6.50	6.50
Capacity 1900-lb each. K10-20 series only					
	15 0	F60	N.C.	34.00	34.00
<i>Rear, Heavy-Duty.</i>					
Capacity 2000-lb each. C10 series only. Included when AT5 or AS3 seats are specified					
	0 62	G50	N.C.	19.00	19.00
Capacity 2600-lb each. C20 series only. PK, PL 7.50-16/E tires or UD, UE 9.50-16.5/D tires available only when J55 brakes are specified					
	0 6	G50	N.C.	19.00	19.00
<i>Rear, Extra Capacity.</i> 2650-lb each. C20 series only					
	0 12	G51	N.C.	23.50	23.50
<b>Stabilizers:</b>					
<i>Front.</i> 1" diameter. Standard on K10-20 series					
	19 0	F59	N.C.	19.00	19.00
<i>Front, Heavy-Duty.</i> Not available on C10 series.					
C20 series only					
	23 0	F58	N.C.	25.00	25.00
K10 series only. HL, HM or HR H78-15/B or larger tires available only when J55 brakes are specified					
	8 14	F58	N.C.	6.00	6.00
K20 series only. TE or TF 8.75-16.5/D or larger tires available only when J55 brakes are specified					
	4 0	F58	N.C.	6.00	6.00
<b>Steering, Power:</b> Standard on C20 series. Included when Z82 Trailering Special or LF8 454-4/SE engine is specified.					
C10 series only.					
With LD4 250-1/SE 6-cylinder engine	35 0	N41	N.C.	133.00	133.00
With LS9 350-4/SE V8 engine	29 0	N41	N.C.	133.00	133.00
K10-20 series only	33 0	N41	N.C.	149.00	149.00

<sup>1</sup> D&H amounts reflect provision for pass through of tire weight tax imposed on manufacturer or importer of tires.  
<sup>2</sup> State and local taxes not included.

# SUBURBAN

## OPTIONS AND ACCESSORIES WHEN INSTALLED BY CHEVROLET

Prices shown are effective with vehicles produced commencing December 13, 1973

Description	Added Weight (F) (R)	Option Number	Factory D&H <sup>§</sup>	List Price	Mfr's Suggested Retail Price <sup>◇</sup>
<b>OTHER OPTIONS</b>					
<b>Steering Wheels:</b>					
<i>Comfortilt</i> C-K10 or K20 series available only when optional transmission is specified or C20 series.					
With M40 Turbo Hydra-matic transmission.....	2 0	N33	N.C.	58.00	58.00
With M20 4-speed transmission. C-K10 or K20 series only...	3 1	N33	N.C.	58.00	58.00
<i>Custom.</i>					
C10-20 series only. Included when YE9 Cheyenne Super is specified.....	0 0	N31	N.C.	10.00	10.00
K10-20 series only. Available only when N41 power steering is specified. Includes 16" steering wheel.....	0 0	N31	N.C.	10.00	10.00
<b>Tank, Fuel:</b> Replaces production fuel tank. Approximate capacity.					
30 Gallon.....	-6 50	NK7	N.C.	20.00	20.00
40 Gallon.....	-15 114	NE2	N.C.	54.00	54.00
<b>Throttle Control:</b> Manual.....	1 0	K31	N.C.	15.00	15.00
<b>Tires:</b> See following page					
<b>Towing Device:</b> Two front towing hooks. K10-20 series only...	16 -3	V76	N.C.	19.00	19.00
<b>Trailer Hitch Platform:</b> Weight Distributing Type.....	-21 71	VR4	N.C.	95.00	95.00
<b>Trailer Special:</b> Available only when V8 engine, M20 4-speed or M40 Turbo Hydra-matic transmission and K76 61-amp generator or C60 or C69 air conditioning are specified. Includes trailering special emblem. See Chart A on the Trailering Special Package page for Suburban, under the Recreational Vehicles Tab, for GCW ratings with available power teams combinations. C-K10 series available only when G50 springs and HL, HM or HR H78-15/B or larger tubeless tires are specified. C-K10 or K20 series requires use of V01 HD cooling with M20 4-speed transmission unless C60 or C69 air conditioning is specified. Includes UA1 HD battery and N41 power steering without LFB 454-4/SE engine.					
C10 series only.					
Without LFB 454-4/SE engine.....	31 0	Z82	N.C.	158.00	158.00
With LFB 454-4/SE engine.....	0 0	Z82	N.C.	N.C.	N.C.
C20 series only.....	0 0	Z82	N.C.	N.C.	N.C.
K10-20 series only.....	35 0	Z82	N.C.	174.00	174.00

<sup>§</sup> D&H amounts reflect provision for pass through of tire weight tax imposed on manufacturer or importer of tires.  
<sup>◇</sup> State and local taxes not included.

# SUBURBAN

## OPTIONS AND ACCESSORIES WHEN INSTALLED BY CHEVROLET

Prices shown are effective with vehicles produced commencing December 13, 1973

Description	Added Weight (F) (R)	Option Number	Factory D&Hs	List Price	Mfr's Suggested Retail Price ◊
<b>OTHER OPTIONS</b>					
<b>Wheel Trim: Bright Metal.</b>					
<i>Hub Caps. Included when YE9 Cheyenne Super is specified.</i>					
C10-20 series only .....	0 0	P03	N.C.	11.00	11.00
K10-20 series only .....	2 2	P03	N.C.	14.00	14.00
<i>Rally Wheels. Not available when MG or MD 6.50-16, NH or NG 7.00-15 or NK or NL 7.00-16 tires are specified. Includes special hub caps and P06 trim rings.</i>					
<i>Without YE9 Cheyenne Super.</i>					
C10 series only. Also includes 15" x 7" wheels .....	3 7	N67	N.C.	71.00	71.00
K10 series only.					
Without WR 10-15/B tires. Also includes 15" x 7" wheels	5 10	N67	N.C.	71.00	71.00
With WR 10-15/B tires. Also includes 15" x 8" wheels ..	7 13	N67	N.C.	71.00	71.00
<i>With YE9 Cheyenne Super</i>					
C10 series only. Also includes 15" x 7" wheels .....	3 7	N67	N.C.	60.00	60.00
K10 series only.					
Without WR 10-15/B tires. Also includes 15" x 7" wheels	5 10	N67	N.C.	57.00	57.00
With WR 10-15/B tires. Also includes 15" x 8" wheels ..	7 13	N67	N.C.	57.00	57.00
<i>Trim Rings. Available only when YE9 Cheyenne Super or P03 bright metal hub caps are specified. 7.50-16 tires not available on C-K20 series. Included when N67 rally wheels are specified .....</i>					
	2 2	P06	N.C.	30.50	30.50
<i>Wheel Covers. Not available on K20 series or with CD LR78-15 radial tires.</i>					
<i>C10 series only.</i>					
<i>Without YE9 Cheyenne Super.</i>					
Without MG or MD 6.50-16 or NK or NL 7.00-16 tires .....	4 4	P01	N.C.	26.00	26.00
With MG or MD 6.50-16 or NK or NL 7.00-16 tires .....	6 6	P01	N.C.	56.50	56.50
<i>With YE9 Cheyenne Super.</i>					
Without MG or MD 6.50-16 or NK or NL 7.00-16 tires .....	4 4	P01	N.C.	15.00	15.00
With MG or MD 6.50-16 or NK or NL 7.00-16 tires .....	6 6	P01	N.C.	46.50	46.50
<i>C20 series only. Includes P06 trim rings.</i>					
Without YE9 Cheyenne Super .....	7 7	P01	N.C.	56.50	56.50
With YE9 Cheyenne Super .....	7 7	P01	N.C.	46.50	46.50
<i>K10 series only.</i>					
<i>Without YE9 Cheyenne Super.</i>					
Without MG or MD 6.50-16 or NK or NL 7.00-16 tires .....	6 6	P01	N.C.	29.00	29.00
With MG or MD 6.50-16 or NK or NL 7.00-16 .....	8 8	P01	N.C.	59.50	59.50
<i>With YE9 Cheyenne Super.</i>					
Without MG or MD 6.50-16 or NK or NL 7.00-16 .....	6 6	P01	N.C.	15.00	15.00
With MG or MD 6.50-16 or NK or NL 7.00-16 tires .....	8 8	P01	N.C.	46.50	46.50
<b>Window, Tailgate:</b> Electric. End Gate series only .....	-2 7	A33	N.C.	47.00	47.00
<b>Wood-Grained Exterior Trim:</b> Available only when YG1 custom upper and lower moldings are specified. Not available when two-tone paint is specified. Includes Estate nameplate .....					
	0 0	YG2	N.C.	101.00	101.00

§ D&H amounts reflect provision for pass through of tire weight tax imposed on manufacturer or importer of tires.  
 ◊ State and local taxes not included.

# SUBURBAN

## FACTORY INSTALLED TIRES

See Tire Compatibility Chart for Available Front/Rear Combinations.  
Spare tire available to match either front or rear tires.

Prices shown are effective with vehicles produced commencing December 13, 1973

Tire Size Type	Rim Width Included in Tire Option	Added Weight (F) (R)	Option Number	Factory D&H <sup>§</sup>	List Price	Mfr's Suggested Retail Price◇
<b>C-K10-SERIES</b>						
<b>TUBELESS TIRES USED WITH SINGLE REAR WHEELS</b>						
<b>G78-15/B Passenger Type. Maximum Tire Capacity (Each)—Front (1473) Rear (1473)</b>						
<b>Highway Bias Belted Ply Blackwall</b>						
Front (Standard) .....	6.00	0 0	XGS	N.C.	N.C.	N.C.
Rear (Standard) .....	6.00	0 0	YGS	N.C.	N.C.	N.C.
Spare (Standard) .....	6.00	0 0	ZGS	N.C.	N.C.	N.C.
<b>Highway Bias Belted Ply White Stripes</b>						
Front .....	6.00	0 0	XGT	N.C.	13.70	13.70
Rear .....	6.00	0 0	YGT	N.C.	13.70	13.70
Spare .....	6.00	0 0	ZGT	N.C.	6.85	6.85
<b>On-Off Road Bias Belted Ply Blackwall</b>						
Front. K10 series only .....	6.00	5 0	XGU	N.C.	7.70	7.70
Rear .....	6.00	0 5	YGU	N.C.	7.70	7.70
Spare .....	6.00	-1 4	ZGU	N.C.	3.85	3.85
<b>H78-15/B Passenger Type. Maximum Tire Capacity (Each)—Front (1609) Rear (1609)</b>						
<b>Highway Bias Belted Ply Blackwall</b>						
Front .....	6.00	5 0	XHL	.46	9.90	10.36
Rear .....	6.00	0 5	YHL	.46	9.90	10.36
Spare .....	6.00	-1 4	ZHL	.23	4.95	5.18
<b>Highway Bias Belted Ply White Stripes</b>						
Front .....	6.00	5 0	XHM	.46	24.90	25.36
Rear .....	6.00	0 5	YHM	.46	24.90	25.36
Spare .....	6.00	-1 4	ZHM	.23	12.45	12.68
<b>On-Off Road Bias Belted Ply Blackwall</b>						
Front. K10 series only .....	6.00	10 0	XHR	.46	17.60	18.06
Rear .....	6.00	0 10	YHR	.46	17.60	18.06
Spare .....	6.00	-1 6	ZHR	.23	8.80	9.03
<b>L78-15/B Passenger Type. Maximum Tire Capacity (Each)—Front (1791) Rear (1791)</b>						
<b>Highway Bias Belted Ply Blackwall</b>						
Front .....	6.00	9 0	XLB	1.00	29.60	30.60
Rear .....	6.00	0 9	YLB	1.00	29.60	30.60
Spare .....	6.00	-1 5	ZLB	.50	14.80	15.30
<b>Highway Bias Belted Ply White Stripes</b>						
Front .....	6.00	10 0	XLD	1.00	47.30	48.30
Rear .....	6.00	0 10	YLD	1.00	47.30	48.30
Spare .....	6.00	-1 6	ZLD	.50	23.65	24.15
<b>On-Off Road Bias Belted Ply Blackwall</b>						
Front. K10 series only .....	6.00	13 0	XLC	1.00	48.40	49.40
Rear .....	6.00	0 13	YLC	1.00	48.40	49.40
Spare .....	6.00	-2 9	ZLC	.50	24.20	24.70
<b>L78-15/D Passenger Type. Maximum Tire Capacity (Each)—Front (1900) Rear (1900)</b>						
<b>Highway Bias Belted Ply Blackwall</b>						
Front .....	6.00	15 0	XLK	1.74	48.20	49.94
Rear .....	6.00	0 15	YLK	1.74	48.20	49.94
Spare .....	6.00	-2 9	ZLK	.87	24.10	24.97
<b>Highway Bias Belted Ply White Stripes</b>						
Front .....	6.00	16 0	XLL	1.74	65.80	67.54
Rear .....	6.00	0 16	YLL	1.74	65.80	67.54
Spare .....	6.00	-2 9	ZLL	.87	32.90	33.77

§ D&H amounts reflect provision for pass through of tire weight tax imposed on manufacturer or importer of tires.

◇ State and local taxes not included.



# SUBURBAN

## FACTORY INSTALLED TIRES

See Tire Compatibility Chart for Available Front/Rear Combinations.  
Spare tire available to match either front or rear tires.  
Prices shown are effective with vehicles produced commencing December 13, 1973

Tire Size Type	Rim Width Included In Tire Option	Added Weight (F) (R)	Option Number	Factory D&H <sup>†</sup>	List Price	Mfr's Suggested Retail Price <sup>◇</sup>
<b>C-K10 SERIES</b>						
<b>TUBELESS TIRES USED WITH SINGLE REAR WHEELS</b>						
<b>LR78-15/C Passenger Type. Maximum tire capacity (Each)—Front (1900) Rear (1900)</b>						
<b>Highway Steel Belted Radial Ply White Stripe</b>						
Front .....	6.00	14 0	XCD	1.16	105.70	106.86
Rear .....	6.00	0 14	YCD	1.16	105.70	106.86
Spare .....	6.00	-2 9	ZCD	.58	52.85	53.43
<b>C-K10 SERIES</b>						
<b>TUBE-TYPE TIRES USED WITH SINGLE REAR WHEELS</b>						
<b>G78-15/B Passenger Type. Maximum Tire Capacity (Each)—Front (1473) Rear (1473)</b>						
<b>Highway Bias Belted Ply Blackwall</b>						
Front .....	6.00	1 0	XGW	-0.10	4.50	4.40
Rear .....	6.00	0 1	YGW	-0.10	4.50	4.40
Spare .....	6.00	-1 5	ZGW	-0.05	2.25	2.20
<b>On-Off Road Bias Belted Ply Blackwall</b>						
Front. K10 series only .....	6.00	3 0	XGV	-0.10	9.00	8.90
Rear .....	6.00	0 3	YGV	-0.10	9.00	8.90
Spare .....	6.00	-1 4	ZGV	-0.05	4.50	4.45
<b>6.50-16/C (6 PR) Truck Type. Maximum Tire Capacity (Each)—Front (1609) Rear (1609)</b>						
<b>Highway Nylon Blackwall</b>						
Front .....	5.00	7 0	XMG	.24	31.50	31.74
Rear .....	5.00	0 7	YMG	.24	31.50	31.74
Spare .....	5.00	-1 5	ZMG	.12	15.75	15.87
<b>On-Off Road Nylon Blackwall</b>						
Front. K10 series only .....	5.00	14 0	XMD	.94	54.40	55.34
Rear .....	5.00	0 14	YMD	.94	54.40	55.34
Spare .....	5.00	-2 9	ZMD	.47	27.20	27.87
<b>7.00-15/C (6 PR) Truck Type. Maximum Tire Capacity (Each)—Front (1720) Rear (1720)</b>						
<b>Highway Nylon Blackwall</b>						
Front .....	6.00	13 0	XNH	.82	41.80	42.62
Rear .....	6.00	0 13	YNH	.82	41.80	42.62
Spare .....	6.00	-2 9	ZNH	.41	20.90	21.31
<b>On-Off Road Nylon Blackwall</b>						
Front. K10 series only .....	6.00	19 0	XNG	1.66	63.60	65.26
Rear .....	6.00	0 19	YNG	1.66	63.60	65.26
Spare .....	6.00	-2 12	ZNG	.83	31.80	32.63
<b>7.00-16/C (6 PR) Truck Type. Maximum Tire Capacity (Each)—Front (1800) Rear (1800)</b>						
<b>Highway Nylon Blackwall</b>						
Front .....	5.00	40 0	XNK	1.14	48.20	49.34
Rear .....	5.00	0 40	YNK	1.14	48.20	49.34
Spare .....	5.00	-5 25	ZNK	.57	24.10	24.67
<b>On-Off Road Nylon Blackwall</b>						
Front. K10 series only .....	5.00	52 0	XNL	1.26	70.10	71.36
Rear .....	5.00	0 52	YNL	1.26	70.10	71.36
Spare .....	5.00	-7 33	ZNL	.63	35.05	35.68

<sup>†</sup> D&H amounts reflect provision for pass through of tire weight tax imposed on manufacturer or importer of tires.  
<sup>◇</sup> State and local taxes not included.

# SUBURBAN

## FACTORY INSTALLED TIRES

See Tire Compatibility Chart for Available Front/Rear Combinations.  
Spare tire available to match either front or rear tires.

Prices shown are effective with vehicles produced commencing December 13, 1973

Tire Size Type	Rim Width Included In Tire Option	Added Weight (F) (R)	Option Number	Factory D&H <sup>§</sup>	List Price	Mfr's Suggested Retail Price <sup>◇</sup>
----------------	-----------------------------------	----------------------	---------------	--------------------------	------------	---

### K10 SERIES

#### TUBELESS TYPE TIRES USED WITH SINGLE REAR WHEELS

##### 10-15/B (4 PR) Truck Type. Maximum Tire Capacity (Each)—Front (1760) Rear (1760)

###### On-Off Road

Front .....	8.00	34	0	XWR	2.52	115.20	117.72
Rear .....	8.00	0	34	YWR	2.52	115.20	117.72
Spare .....	8.00	-5	22	ZWR	1.28	57.60	58.86

### C-K20 SERIES

#### WIDE BASE TUBELESS TIRES USED WITH SINGLE REAR WHEELS

##### 8.75-16.5/C (6 PR) Maximum Tire Capacity (Each)—Front (1990) Rear (1990)

###### Highway Nylon

Front (Standard) .....	6.00	0	0	XTC	N.C.	N.C.	N.C.
Rear (Standard) .....	6.00	0	0	YTC	N.C.	N.C.	N.C.
Spare .....	6.00	-10	46	ZTC	3.75	72.50	76.25

###### On-Off Road Nylon

Front. K20 series only .....	6.00	1	0	XTB	.32	23.00	23.32
Rear .....	6.00	0	1	YTB	.32	23.00	23.32
Spare .....	6.00	-10	47	ZTB	3.91	92.25	96.16

##### 8.75-16.5/D (8 PR) Maximum Tire Capacity (Each)—Front (2350) Rear (2350)

###### Highway Nylon

Front .....	6.00	8	0	XTE	.52	20.95	21.47
Rear .....	6.00	0	8	YTE	.52	20.95	21.47
Spare .....	6.00	-11	51	ZTE	4.01	81.30	85.31

###### On-Off Road Nylon

Front. K20 series only .....	6.00	5	0	XTF	.92	43.95	44.87
Rear .....	6.00	0	5	YTF	.92	43.95	44.87
Spare .....	6.00	-11	50	ZTF	4.21	92.25	96.46

##### 9.50-16.5/D (8 PR) Maximum Tire Capacity (Each)—Front (2780) Rear (2780)

###### Highway Nylon

Front .....	6.75	33	0	XUD	1.76	52.70	54.46
Rear .....	6.75	0	33	YUD	1.76	55.70	57.46
Spare .....	6.75	-13	66	ZUD	4.63	95.55	100.18

###### On-Off Road Nylon

Front. K20 series only .....	6.75	38	0	XUE	2.02	75.70	77.72
Rear .....	6.75	0	38	YUE	2.02	78.70	80.72
Spare .....	6.75	-14	70	ZUE	4.76	108.45	111.21

<sup>§</sup> D&H amounts reflect provision for pass through of tire weight tax imposed on manufacturer or importer of tires.  
<sup>◇</sup> State and local taxes not included.

# SUBURBAN

## FACTORY INSTALLED TIRES

See Tire Compatibility Chart for Available Front/Rear Combinations.  
Spare tire available to match either front or rear tires.  
Prices shown are effective with vehicles produced commencing December 13, 1973

Tire Size Type	Rim Width Included in Tire Option	Added Weight (F) (R)	Option Number	Factory D&H <sup>§</sup>	List Price	Mfr's Suggested Retail Price ◇
----------------	-----------------------------------	----------------------	---------------	--------------------------	------------	--------------------------------

### K20 SERIES\*

#### TUBELESS FLOTATION TYPE TIRES USED WITH SINGLE REAR WHEELS

##### 10.00-16.5/D (8 PR) Maximum Tire Capacity (Each)—Front (2750) Rear (2750)

###### Highway Nylon

Front .....	8.25	36	0	XWD	2.02	126.20	128.22
Rear .....	8.25	0	36	YWD	2.02	150.80	152.82
Spare .....	8.25	-15	69	ZWD	4.68	110.10	114.78

###### On-Off Road Nylon

Front .....	8.25	40	0	XWF	2.66	149.30	151.96
Rear .....	8.25	0	40	YWF	2.66	173.95	176.61
Spare .....	8.25	-15	71	ZWF	5.00	121.15	126.15

### C-K20 SERIES

#### TUBE-TYPE TIRES USED WITH SINGLE REAR WHEELS

##### 7.50-16/C (6 PR) Maximum Tire Capacity (Each)—Front (2060) Rear (2060)

###### Highway Nylon

Front .....	6.00	28	0	XPB	.04	21.50	21.54
Rear .....	6.00	0	28	YPB	.04	29.60	29.64
Spare .....	6.00	-12	63	ZPB	3.77	63.75	67.52

###### On-Off Road Nylon

Front, K20 series only .....	6.00	46	0	XPC	1.04	46.70	47.74
Rear .....	6.00	0	46	YPC	1.04	54.85	55.89
Spare .....	6.00	-15	75	ZPC	4.27	75.75	80.02

##### 7.50-16/D (8 PR) Maximum Tire Capacity (Each)—Front (2440) Rear (2440)

###### Highway Nylon

Front .....	6.00	29	0	XPF	.66	32.00	32.66
Rear .....	6.00	0	29	YPF	.66	40.05	40.71
Spare .....	6.00	-12	63	ZPF	4.08	66.95	71.03

###### On-Off Road Nylon

Front, K20 series only .....	6.00	46	0	XPG	1.62	59.35	60.97
Rear .....	6.00	0	46	YPG	1.62	67.50	69.12
Spare .....	6.00	-15	75	ZPG	4.56	80.15	84.71

##### 7.50-16/E (10 PR) Maximum Tire Capacity (Each)—Front (2780) Rear (2780)

###### Highway Nylon

Front .....	6.00	28	0	XPK	1.36	55.90	57.26
Rear .....	6.00	0	28	YPK	1.36	64.30	65.66
Spare .....	6.00	-12	63	ZPK	4.43	81.30	85.73

###### On-Off Road Nylon

Front, K20 series only .....	6.00	38	0	XPL	2.32	88.90	91.22
Rear .....	6.00	0	38	YPL	2.32	97.25	99.57
Spare .....	6.00	-14	71	ZPL	4.91	97.25	102.16

§ D&H amounts reflect provision for pass through of tire weight tax imposed on manufacturer or importer of tires.  
◇ State and local taxes not included.

# FRONT AND REAR TIRE AVAILABILITY CHART

## SUBURBAN (2-Wheel Drive)

FRONT		REAR		
Description	Option Number	Description	Option Number	
	Highway	Single Rear	Highway	On-Off Road

### C10 SERIES

Spare tire to match either front or rear tires must be ordered.

<b>TUBELESS</b>				
G78-15/B	<b>GS*</b>	G78-15/B	<b>GS*</b>	<b>GU</b>
G78-15/B White Stripe	<b>GT</b>	G78-15/B White Stripe	<b>GT</b>	—
H78-15/B	<b>HL</b>	H78-15/B	<b>HL</b>	<b>HR</b>
H78-15/B White Stripe	<b>HM</b>	H78-15/B White Stripe	<b>HM</b>	—
L78-15/B	<b>LB</b>	L78-15/B	<b>LB</b>	<b>LC</b>
L78-15/B White Stripe	<b>LD</b>	L78-15/B White Stripe	<b>LD</b>	—
L78-15/D	<b>LK</b>	L78-15/D	<b>LK</b>	—
L78-15/D White Stripe	<b>LL</b>	L78-15/D White Stripe	<b>LL</b>	—
LR78-15/C Radial White Stripe	<b>CD</b>	LR78-15/C Radial White Stripe	<b>CD</b>	—
<b>TUBE-TYPE</b>				
G78-15/B	<b>GW</b>	G78-15/B	<b>GW</b>	<b>GV</b>
6.50-16/C (Truck Type)	<b>MG</b>	6.50-16/C (Truck Type)	<b>MG</b>	<b>MD</b>
7.00-15/C (Truck Type)	<b>NH</b>	7.00-15/C (Truck Type)	<b>NH</b>	<b>NG</b>
7.00-16/C (Truck Type)	<b>NK</b>	7.00-16/C (Truck Type)	<b>NK</b>	<b>NL</b>

\*Base tire on C10 series. G78-15/B Highway Blackwall spare tire (Code GS) is also base equipment and must be ordered separately unless optional spare tire is specified.

### C20 SERIES

Spare tire to match either front or rear tires is available at extra cost.

<b>TUBELESS</b>				
8.75-16/C	<b>TC♦</b>	8.75-16.5/C	<b>TC♦</b>	<b>TB</b>
		8.75-16.5/D	<b>TE</b>	<b>TF</b>
8.75-16.5/D	<b>TE</b>	8.75-16.5/D	<b>TE</b>	<b>TF</b>
9.50-16.5/D	<b>UD</b>	9.50-16.5/D	<b>UD</b>	<b>UE</b>
<b>TUBE-TYPE</b>				
7.50-16/C	<b>PB</b>	7.50-16/C	<b>PB</b>	<b>PC</b>
		7.50-16/D	<b>PF</b>	<b>PG</b>
7.50-16/D	<b>PF</b>	7.50-16/D	<b>PF</b>	<b>PG</b>
7.50-16/E	<b>PK</b>	7.50-16/E	<b>PK</b>	<b>PL</b>

♦Base tire on C20 series.

# FRONT AND REAR TIRE AVAILABILITY CHART

## SUBURBAN (4-Wheel Drive)

FRONT			REAR		
Description	Option Number		Description	Option Number	
	Highway	On-Off Road		Single Rear	Highway

### K10 SERIES

Spare tire to match either front or rear tires must be ordered.

<b>TUBELESS</b>					
G78-15/B	<b>GS*</b>	—	G78-15/B	<b>GS*</b>	—
G78-15/B	—	<b>GU</b>	G78-15/B	—	<b>GU</b>
G78-15/B White Stripe	<b>GT</b>	—	G78-15/B White Stripe	<b>GT</b>	—
H78-15/B	<b>HL</b>	—	H78-15/B	<b>HL</b>	—
H78-15/B	—	<b>HR</b>	H78-15/B	—	<b>HR</b>
H78-15/B White Stripe	<b>HM</b>	—	H78-15/B White Stripe	<b>HM</b>	—
L78-15/B	<b>LB</b>	—	L78-15/B	<b>LB</b>	—
L78-15/B	—	<b>LC</b>	L78-15/B	—	<b>LC</b>
L78-15/B White Stripe	<b>LD</b>	—	L78-15/B White Stripe	<b>LD</b>	—
L78-15/D	<b>LK</b>	—	L78-15/D	<b>LK</b>	—
L78-15/D White Stripe	<b>LL</b>	—	L78-15/D White Stripe	<b>LL</b>	—
LR78-15/C Radial White Stripe	<b>CD</b>	—	LR78-15/C Radial White Stripe	<b>CD</b>	—
10-15/B	—	<b>WR</b>	10-15/B	—	<b>WR</b>
<b>TUBE-TYPE</b>					
G78-15/B	<b>GW</b>	—	G78-15/B	<b>GW</b>	—
G78-15/B	—	<b>GV</b>	G78-15/B	—	<b>GV</b>
6.50-16/C (Truck Type)	<b>MG</b>	—	6.50-16/C (Truck Type)	<b>MG</b>	—
6.50-16/C (Truck Type)	—	<b>MD</b>	6.50-16/C (Truck Type)	—	<b>MD</b>
7.00-15/C (Truck Type)	<b>NH</b>	—	7.00-15/C (Truck Type)	<b>NH</b>	—
7.00-15/C (Truck Type)	—	<b>NG</b>	7.00-15/C (Truck Type)	—	<b>NG</b>
7.00-16/C (Truck Type)	<b>NK</b>	—	7.00-16/C (Truck Type)	<b>NK</b>	—
7.00-16/C (Truck Type)	—	<b>NL</b>	7.00-16/C (Truck Type)	—	<b>NL</b>

\*Base tire on K10 series. G78-15/B Highway Blackwall spare tire (Code GS) is also base equipment and must be ordered separately unless optional spare tire is specified.

### K20 SERIES

Spare tire to match either front or rear tires is available at extra cost.

<b>TUBELESS</b>					
8.75-16.5/C	<b>TC+</b>	—	8.75-16.5/C	<b>TC+</b>	—
			8.75-16.5/D	<b>TE</b>	—
8.75-16.5/C	—	<b>TB</b>	8.75-16.5/C	—	<b>TB</b>
			8.75-16.5/D	—	<b>TF</b>
8.75-16.5/D	<b>TE</b>	—	8.75-16.5/D	<b>TE</b>	—
8.75-16.5/D	—	<b>TF</b>	8.75-16.5/D	—	<b>TF</b>
9.50-16.5/D	<b>UD</b>	—	9.50-16.5/D	<b>UD</b>	—
9.50-16.5/D	—	<b>UE</b>	9.50-16.5/D	—	<b>UE</b>
10.00-16.5/D	<b>WD</b>	—	10.00-16.5/D	<b>WD</b>	—
10.00-16.5/D	—	<b>WF</b>	10.00-16.5/D	—	<b>WF</b>
<b>TUBE-TYPE</b>					
7.50-16/C	<b>PB</b>	—	7.50-16/C	<b>PB</b>	—
			7.50-16/D	<b>PF</b>	—
			7.50-16/E	<b>PK</b>	—
7.50-16/C	—	<b>PC</b>	7.50-16/C	—	<b>PC</b>
			7.50-16/D	—	<b>PG</b>
			7.50-16/E	—	<b>PL</b>
7.50-16/D	<b>PF</b>	—	7.50-16/D	<b>PF</b>	—
7.50-16/D	—	<b>PG</b>	7.50-16/D	—	<b>PG</b>
7.50-16/E	<b>PK</b>	—	7.50-16/E	<b>PK</b>	—
7.50-16/E	—	<b>PL</b>	7.50-16/E	—	<b>PL</b>

♦ Base tire on K20 series.