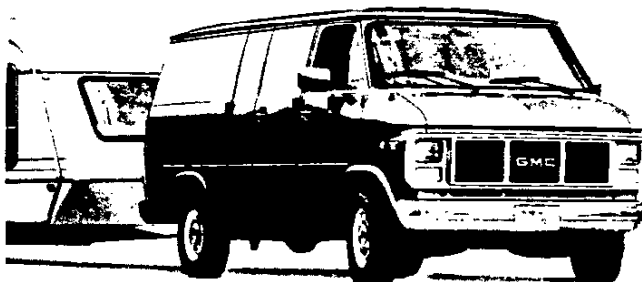
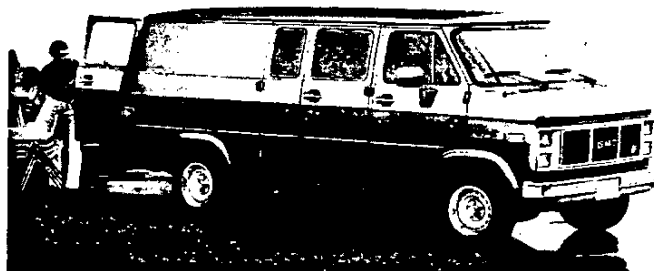
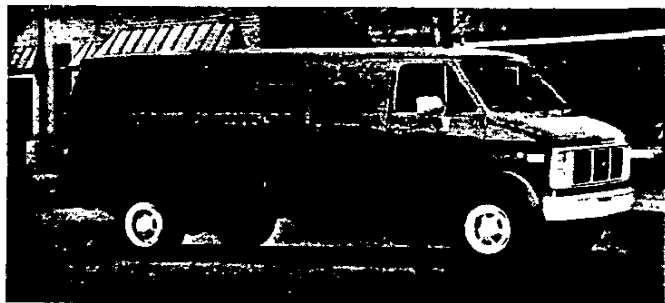




# CHEVY VAN/VANDURA



## CONTENTS

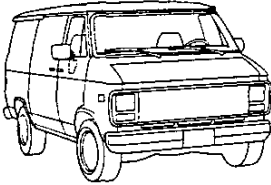
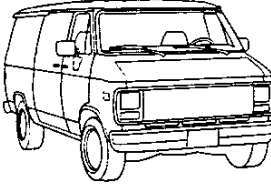
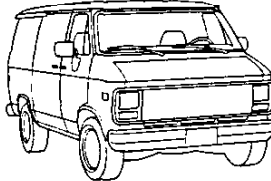
	<u>Page</u>
MODELS	2
STANDARD TRIM	4
POWERTRAINS	5
STANDARD SUSPENSION	7
OPTIONAL SUSPENSION	8
WHEELS AND TIRES	9
STEERING/BRAKES	10
ELECTRICAL	11
COOLING	13
DIMENSIONS	14
OPTIONS	15
COLOR COMBINATIONS	18
EXTERIOR COLORS	B
INTERIOR TRIM	C
SEATS	D
TRAILERING	E

**CHEVY VAN/VANDURA**

KEY: Red Print Indicates Not Available in California

Bold Print Indicates Not Available w/High Altitude Emissions

**CARGO VAN**

G10/1500 CHEVY VAN/ VANDURA (110-IN. WB)		WB (IN.)	GVWR (LBS.)	MAX. PAYLOAD (LBS.)	PASS. CAP. STD/OPT	STD ENGINE/TRANS	OPT ENGINE/TRANS	MODEL NUMBER
	110	4900	937	1 2	4.3L V6/A4	4.3L V6/A3 5.0L V8/A4/A3	G11005/ ZW9	
	110	5600	1628	1 2	4.3L V6/A4	4.3L V6/A3 5.0L V8/A4/A3	G11005/ ZW9/ F60/ G50 <sup>2</sup>	
	110	6000	2018	1 2	4.3L V6/A4	4.3L V6/A3 5.0L V8/A4/A3	G11005/ ZW9/ F60/ G50 <sup>2</sup>	
G10/1500 CHEVY VAN/ VANDURA (125-IN. WB)		WB (IN.)	GVWR (LBS.)	MAX. PAYLOAD (LBS.)	PASS. CAP. STD/OPT	STD ENGINE/TRANS	OPT ENGINE/TRANS	MODEL NUMBER
	125	4900	840	1 2	4.3L V6/A4	4.3L V6/A3 5.0L V8/A4/A3	G11305/ ZW9	
	125	5600	1517	1 2	4.3L V6/A4	4.3L V6/A3 5.0L V8/A4/A3	G11305/ ZW9/ F60/ G50 <sup>2</sup>	
	125	6000	1906	1 2	4.3L V6/A4	4.3L V6/A3 5.0L V8/A4/A3	G11305/ ZW9/ F60/ G50 <sup>2</sup>	
G20/2500 CHEVY VAN/ VANDURA (110-IN. WB)		WB (IN.)	GVWR (LBS.)	MAX. PAYLOAD (LBS.)	PASS. CAP. STD/OPT	STD ENGINE/TRANS	OPT ENGINE/TRANS	MODEL NUMBER
	110	6600	2602	1 2	4.3L V6/A4	4.3L V6/A3 5.0L V8/A4/A3	G21005/ ZW9	

**G10/1500 CHEVY VAN/VANDURA (110-IN. WHEELBASE)**

The G10/1500 Chevy Van/Vandura 110-in. wheelbase is the base full-size cargo van model. A variety of GVWRs and powertrains are offered.

**G10/1500 CHEVY VAN/VANDURA (125-IN. WHEELBASE)**

The G10/1500 Chevy Van/Vandura 125-in. wheelbase model offers increased cargo length and volume when compared to the 110-in. wheelbase G10/1500 model.

**G20/2500 CHEVY VAN/VANDURA (110-IN. WHEELBASE)**

The G20/2500 Chevy Van/Vandura 110-in. wheelbase model offers a higher GVWR than the G10/1500 series and is available with a variety of powertrains.

<sup>1</sup>Based on model weight. Total available for equipment and cargo. <sup>2</sup>Reqs. YCE tire. <sup>3</sup>W/YCU/YCV or YCW tire.

# MODELS

# 1990 CHEVY VAN/VANDURA

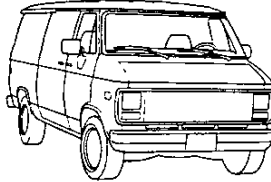
KEY: Red Print Indicates Not Available in California    Bold Print Indicates Not Available w/High Altitude Emissions

## CARGO VAN

### G20/2500 CHEVY VAN/VANDURA (125-IN. WHEELBASE)

The G20/2500 Chevy Van/Vandura 125-in. wheelbase model offers increased cargo length and volume when compared to the 110-in. G20/2500 model.

### G20/2500 CHEVY VAN/VANDURA (125-IN. WB)

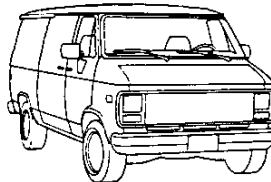


WB (IN.)	GVWR (LBS.)	MAX. PAYLOAD (LBS.)	PASS. CAP. STD/OPT	STD ENGINE/TRANS	OPT ENGINE/TRANS	MODEL NUMBER
125	6600	2480	1 2	4.3L V6/A4	4.3L V6/A3 5.0L V8/A4/A3 5.7L V8/A4	G21305/ ZW9

### G30/3500 CHEVY VAN/VANDURA (125-IN. WHEELBASE)

The G30/3500 Chevy Van/Vandura 125-in. wheelbase model offers a higher GVWR than the G20/2500 series and is available with a variety of powertrains.

### G30/3500 CHEVY VAN/VANDURA (125-IN. WB)

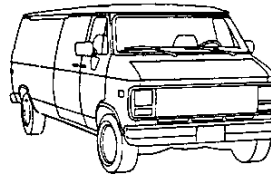


WB (IN.)	GVWR (LBS.)	MAX. PAYLOAD (LBS.)	PASS. CAP. STD/OPT	STD ENGINE/TRANS	OPT ENGINE/TRANS	MODEL NUMBER
125	8600	3974	1 2	5.7L V8/A3	7.4L V8/A3	G31305/ ZW9/ C6P
125	8600	3617	1 2	6.2L V8/A3	—	G31305/ ZW9/ C6P B3J

### G30/3500 EXTENDED CHEVY VAN/VANDURA (146-IN. WHEELBASE)

The G30/3500 Extended Chevy Van/Vandura 146-in. wheelbase model offers increased cargo length and volume as compared to the 125-in. wheelbase G30/3500 model.

### G30/3500 EXTENDED CHEVY VAN/VANDURA (146-IN. WB)



WB (IN.)	GVWR (LBS.)	MAX. PAYLOAD (LBS.)	PASS. CAP. STD/OPT	STD ENGINE/TRANS	OPT ENGINE/TRANS	MODEL NUMBER
146	8600	3603	1 2	5.7L V8/A3	7.4L V8/A3	G31605/ ZW9/ C6P

<sup>1</sup>Based on model weight. Total available for equipment and cargo.

## SEATING ARRANGEMENTS

### STANDARD AND OPTIONAL: 1-PASSENGER SEATING

A high-back driver's side front bucket seat with Vinyl trim is standard. This seat can be replaced with an optional high-back seat with Custom Vinyl trim.

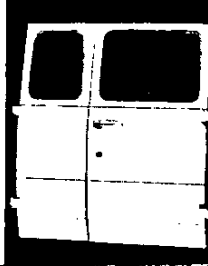
### OPTIONAL: 2-PASSENGER SEATING (RPO A57)

This option consists of a high-back driver's side front bucket seat and a high-back passenger's side front bucket seat both with Vinyl or Custom Vinyl trim.

## SIDE DOOR APPLICATIONS

### STANDARD: CHOICE OF STANDARD SIDE SWING OUT DOORS (E24) OR SLIDING SIDE DOOR (YA2)

All Chevy Van/Vandura models are offered with a choice of standard swing-out side doors (E24) or a sliding side door (RPO YA2) (available at no extra cost).



## TRIM LEVELS

### STANDARD

The Chevy Van/Vandura Cargo Van is offered only in a Standard trim level. The Standard trim includes an impressive level of features to meet the needs of the full-size cargo van buyer.

## STANDARD

The Chevy Van/Vandura is designed to offer buyers a high level of standard comfort and convenience features when purchasing a standard-level cargo van.

*The following features are standard:*



Some equipment shown may be optional or extra cost.

### POWERTRAIN/CHASSIS

- 4.3-liter V6 engine with Electronic Fuel Injection (EFI) is standard on models below 8600 lbs. GVWR. It produces 150 net horsepower @ 4000 rpm and 230 lb. ft. of net torque @ 2400 rpm.
- 5.7-liter V8 engine with Electronic Fuel Injection (EFI) is standard on 8600 lb GVWR models. It produces 190 horsepower @ 4000 rpm and 300 lb. ft. of net torque @ 2400 rpm.
- 6.2-liter V8 diesel engine with gear driven Mechanical Fuel Injection is available with B3J diesel equipment on G20/2500 and G30/3500 models (see Powertrains for details).
- Single electric low-note horn.
- 1.06-inch diameter front stabilizer bar.
- A 4-speed automatic overdrive transmission is standard on all G10/1500, G20/2500 models and G31305 at 7100 GVWR. A 3-speed automatic transmission is standard on all other G30/3500 models (see Powertrains section for details).
- Front suspension is an independent coil spring design.
- Rear suspension is a two-stage multi-leaf spring design.
- Heavy-duty power front disc/rear drum brakes.
- Rear-wheel anti-lock braking system.
- Power steering.
- All-welded integral body-frame construction.
- 22-gallon (approx.) fuel tank except G31605 Extended model which has a standard 33-gallon (approx.) fuel tank.
- 32mm heavy-duty front and rear shock absorbers.
- Standard alternator with a maximum capacity of 85 amps (gasoline engine) or 66 amps (diesel engine).
- Heavy-duty battery with 630 CCA is standard on all gasoline engine models.
- Two 540 CCA batteries are standard on all diesel engine models.

### EXTERIOR

- Front and rear bumpers painted silver.
- Molded plastic grille and front lamp bezels painted light argent. Vandura grille has dark argent air intake areas.
- Single rectangular halogen headlamps.
- Bright metal hub caps with black trim.
- White painted steel wheels (15" x 6.00" on G10/1500 and G20/2500 models and 16.5" x 6.75" on G30/3000 models).
- Four steel-belted radial tires on G10/1500, G20/2500 models and G31305 at 7100 GVWR. All other G30/3500 models have four nylon-ply tires as standard equipment (see Wheels and Tires for size and type).
- RH and LH white painted below-eye-line mirrors with adjustable heads. Mirror head size is 6.5" x 9.00".
- Tools include mechanical jack and wheel wrench.
- Undercoating on body rocker panels, step panels and wheel housings.
- Side window defoggers.
- Tinted glass on all windows.
- Intermittent windshield wiper system.
- Swing-out rear side doors.
- Positive rear door stops.

### INTERIOR

- LH padded armrest.
- Adjustable high-back front bucket driver's seat with all-vinyl trim.
- LH coat hook.
- Safety step pads on front and rear side door step panels.
- Latex foam rubber door seals.
- Two dome lamps with front door-actuated switches.
- Floor-covering consists of embossed black rubber mat on driver's side.
- RH and LH padded, color-keyed sunshades.
- Gages include speedometer, odometer, fuel level, oil pressure, voltmeter, engine temperature, and trip odometer.
- Steering column with anti-theft locking feature.
- Deluxe outside air heater and defogger.
- Mystic-colored perforated hard-board headliner in driver's area.
- Stowage box with latched door on front face of instrument panel extension.
- Parcel tray on top surface of instrument panel extension, includes beverage holder provisions.
- Full-size spare tire and wheel on G10/1500 models. (Spare wheel only on G20/2500 and G30/3500 models).
- Spare tire carrier on RH rear side.
- Cigarette lighter.
- Electronically-tuned AM radio with digital clock and fixed mast antenna.

# POWERTRAINS

1990

# CHEVY VAN/VANDURA

## TRANSMISSION GEAR RATIOS

## REAR AXLES

KEY: FF—Full-Floating

AUTOMATIC		
TRANSMISSION MODEL	AUTOMATIC 3-SPEED 400	AUTOMATIC 4-SPEED w/OVERDRIVE 700R4
RPO CODE	MX1	MX0
<b>GEAR RATIOS</b>		
First	2.48	3.06
Second	1.48	1.63
Third	1.00	1.00
Fourth	—	.70
Reverse	2.08	2.29
<b>GEAR TYPE</b>	Planetary	Planetary
<b>TORQUE CONVERTER</b>		
Element Types	Pump/Stator/Turbine	Pump/Stator/Turbine
Lock-up Clutch	—	Automatic
<b>POWER TAKE-OFF DATA</b>		
Opening Type:	—	—
Location:	—	—
Drive Gear:	—	—
PTO Gear RPM	—	—
@ 1000 Engine RPM:	—	—
PTO Pitch Line	—	—
Velocity @ 1000 RPM:	—	—
<b>LUBRICANT CAPACITY (pints)</b>		
Dry Fill	20	19
Refill	5	10

REAR AXLE: Make and Capacity (lbs.)	GM 3500	GM 5700	Dana <sup>1</sup> 5700 FF
<b>PINION &amp; RING GEARS:</b> Type	Hypoid		Hypoid
Ratio	3.08	3.42	3.73
Pinion Teeth	13	12	11
Ring Gear Teeth	40	41	41
Ring Gear Dia. (in.)	8.5	8.5	8.5
<b>DIFFERENTIAL:</b> Type	2-Pinion Tapered Roller		2-Pinion Tapered Roller
Bearings, Type	2-Pinion Tapered Roller		2-Pinion Tapered Roller
<b>AXLE SHAFTS:</b> Type	Semi-Floating Integral Shaft and Drive Flange	Semi-Floating Integral Shaft and Drive Flange	Full-Floating Integral Shaft and Drive Flange
Min. Diameter (in.)	—	—	1.38
<b>HOUSING @ SPRING SEAT:</b> Section Diameter and Thickness (in.)	3.0 x .21	3.34 x .238	3.12 x .375

<sup>1</sup>w/L19 Engine. G80 is not available.

KEY: S Standard O Optional  
— Not Offered

Red Not Available w/California Emissions  
Bold Not Available w/High Altitude Emissions

H High Altitude Emissions Only  
C California Emissions Only

MODEL	TRANSMISSION				AXLES				GVWR
	(MM4) MAN 4-SPD	(MM5) MAN 5-SPD	(MX1) AUTO 3-SPD	(MX0) AUTO 4-SPD	← ECONOMY →		← POWER →		
G10/1500 CHEVY VAN/VANDURA (110-IN. WB) G11005					3.08	3.42	3.73	4.10	
G10/1500 CHEVY VAN/VANDURA (125-IN. WB) G11305									
<b>ENGINE</b>									
<b>4.3L V6 (LB4)</b>	—	—	—	S	—	S	O <sup>1</sup>	—	4900
	—	—	—	—	—	—	—	—	5600
	—	—	—	S	—	S	O <sup>1 2</sup>	—	6000*
	—	—	—	—	—	—	—	—	—
<b>5.0L V8 (L03)</b>	—	—	—	S	S	O	—	—	4900
	—	—	—	—	—	—	—	—	5600
	—	—	—	S	S	O	—	—	6000*
	—	—	—	—	—	—	—	—	—

<sup>1</sup>Requires KC4 Engine Oil Cooler <sup>2</sup>Standard with California Emissions <sup>3</sup>Standard with High Altitude Emissions <sup>4</sup>Requires P215 Tires

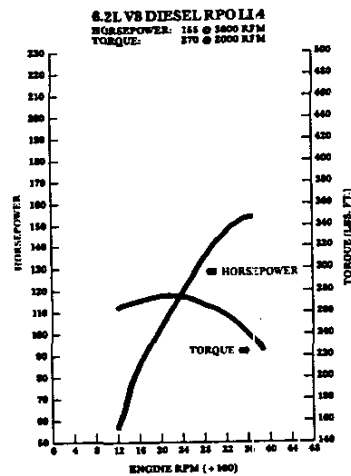
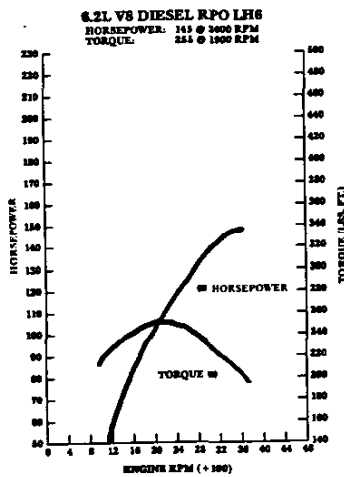
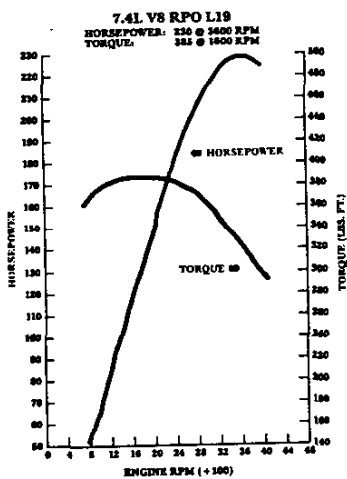
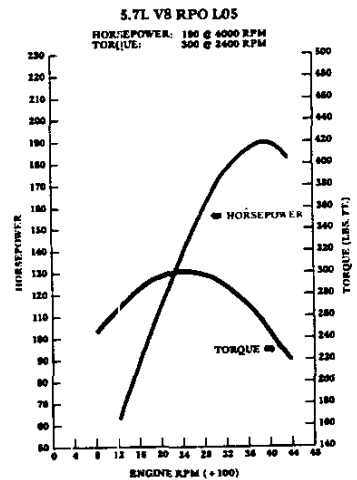
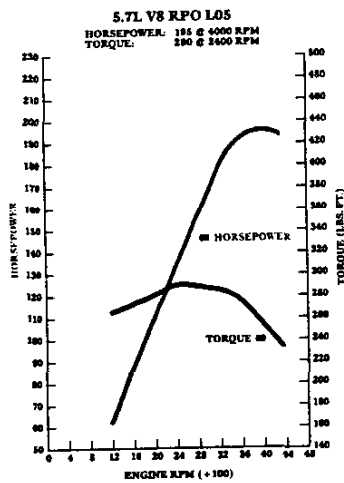
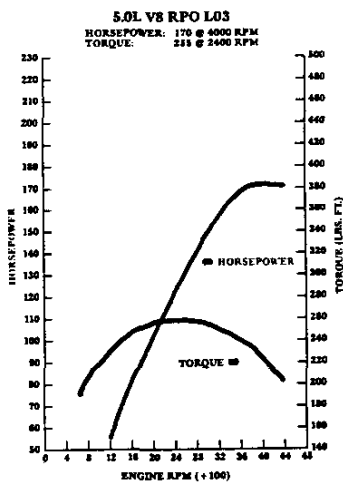
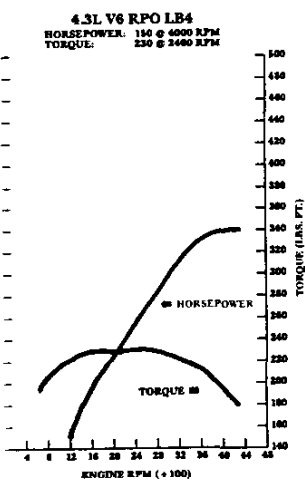
MODEL	TRANSMISSION				AXLES				GVWR
	(MM4) MAN 4-SPD	(MM5) MAN 5-SPD	(MX1) AUTO 3-SPD	(MX0) AUTO 4-SPD	← ECONOMY →		← POWER →		
G20/2500 CHEVY VAN/VANDURA (110-IN. WB) G21005					3.08	3.42	3.73	4.10	
G20/2500 CHEVY VAN/VANDURA (125-IN. WB) G21305									
<b>ENGINE</b>									
<b>4.3L V6 (LB4)</b>	—	—	—	S	—	S	O <sup>1 3</sup>	—	6600
	—	—	—	—	—	—	—	—	—
<b>5.0L V8 (L03)</b>	—	—	—	S	S	O <sup>3</sup>	O <sup>2 3</sup>	—	6600
<b>5.7L V8 (L05)</b>	—	—	—	—	—	—	—	—	6600
<b>6.2L V8 DIESEL (LH6)</b>	—	—	—	S <sup>4</sup>	S	O	O <sup>3 4</sup>	—	6600

<sup>1</sup>Requires KC4 Engine Oil Cooler <sup>2</sup>With Standard Emissions Requires Z82 Trailing Special <sup>3</sup>N/A G80 Locking Differential <sup>4</sup>G21305 Only <sup>5</sup>Standard with High Altitude Emissions

MODEL	TRANSMISSION				AXLES				GVWR
	(MM4) MAN 4-SPD	(MM5) MAN 5-SPD	(MX1) AUTO 3-SPD	(MX0) AUTO 4-SPD	← ECONOMY →		← POWER →		
G30/3500 CHEVY VAN/VANDURA (125-IN. WB) G31305					3.08	3.42	3.73	4.10	
C30/3500 EXTENDED CHEVY VAN/VANDURA (146-IN. WB) G31605									
<b>ENGINE</b>									
<b>4.3L V6 (LB4)<sup>1</sup></b>	—	—	—	—	—	—	—	—	8600
<b>5.7L V8 (L05)</b>	—	—	S	—	—	—	S	O	8600
<b>7.4L V8 (L19)<sup>4</sup></b>	—	—	S <sup>3</sup>	—	—	S	O	O <sup>2</sup>	8600
<b>6.2L V8 DIESEL (LL4)<sup>1</sup></b>	—	—	S	—	—	—	S	O	8600

<sup>1</sup>N/A G31605 <sup>2</sup>Requires Z82 Trailing Special <sup>3</sup>Includes KC4 Engine Oil Cooler, N/A G80 Locking Differential <sup>4</sup>N/A B3D School Bus Equipment

HORSEPOWER AND TORQUE RATINGS							
ENGINES	4.3L V6	5.0L V8	5.7L V8	5.7L V8	7.4L V8	6.2L V8 DIESEL	6.2L V8 HD DIESEL
ORDERING CODE	LB4	L03	L05	L05	L19	LH6	LL4
RESTRICTIONS			AT 6600 LBS. GVWR	AT 8600 LBS. GVWR	AT 8600 LBS. GVWR	UP TO 8599 LBS. GVWR	8600 LBS. OR ABOVE GVWR
SAE NET HORSEPOWER @ RPM	150 @ 4000	170 @ 4000	195 @ 4000	190 @ 4000	230 @ 3600	145 @ 3600	155 @ 3600
SAE NET TORQUE LB. FT. @ RPM	230 @ 2400	255 @ 2400	290 @ 2400	300 @ 2400	385 @ 1600	255 @ 1900	270 @ 2000
FUEL SYSTEM	EFI	EFI	EFI	EFI	EFI	Gear Driven Mechanical Fuel Injection	Gear Driven Mechanical Fuel Injection
CLUTCH SIZE (in.)	—	—	—	—	—	—	—
STD. Battery (Cold Cranking Amps @ 0°F)	630	630	630	630	630	2 @ 540 Each	2 @ 540 Each



# STD SUSPENSION

1990  
CHEVY VAN/VANDURA

MODEL	G10/1500 CHEVY VAN/ VANDURA (110-IN. WB)	G10/1500 CHEVY VAN/ VANDURA (125-IN. WB)	G20/2500 CHEVY VAN/ VANDURA (110-IN. WB)		G20/2500 CHEVY VAN/ VANDURA (125-IN. WB)		G30/3500 CHEVY VAN/ VANDURA (125-IN. WB)	G30/3500 EXTENDED CHEVY VAN/ VANDURA (146-IN. WB)
			GAS	DIESEL	GAS	DIESEL		
MODEL NUMBER	G11005	G11305	G21005		G21305		G31305	G31605
SUSPENSION (STD)								
<b>PAYLOAD</b> (Max. lbs.) <sup>1</sup>	937	840	2602	2096	2480	2004	2698	3603
<b>GVWR</b> (lbs.)	4900	4900	6600		6600		7100	8600
<b>GAWR</b> (lbs.): Front	2620	2620	3400	3500	3400	3670	3400	3900
Rear	2400	2400	3400		3400		3980	5360
<b>FRONT SUSPENSION:</b> Type Standard Spring Cap. (Tot. lbs.)	Ind. Coil Spring 2620	Ind. Coil Spring 2620	Ind. Coil Spring 3400 3500		Ind. Coil Spring 3400 3670		Ind. Coil Spring 3400	Ind. Coil Spring 3900
Front Shock Absorbers Piston Diameter (mm) STD/OPT	32/—	32/—	32/—		32/—		32/—	32/—
Front Stabilizer Bar Diameter (in.) STD/OPT	1.06/—	1.06/—	1.06/—		1.06/—		1.06/—	1.06/—
<b>REAR SUSPENSION:</b> Type	Semi-Elliptic 2-Stage Multi-Leaf	Semi-Elliptic 2-Stage Multi-Leaf	Semi-Elliptic 2-Stage Multi-Leaf		Semi-Elliptic 2-Stage Multi-Leaf		Semi-Elliptic 2-Stage Multi-Leaf	Semi-Elliptic 2-Stage Multi-Leaf
Standard Spring Capacity (Tot. lbs.) Leaves Per Spring Leaf Total Thickness (in.)	2400 4 1.57	2400 4 1.57	3400 5 1.97		3400 5 1.97		4200 5 2.03	5400 7 2.82
Rear Shock Absorbers Piston Diameter (mm) STD/OPT	32/—	32/—	32/—		32/—		32/—	32/—
<b>FRONT AXLE:</b> Type Make Maximum Capacity (lbs.) Standard Hub Locks Pinion/Ring Gear Type	— — 3400 — —	— — 3400 — —	— — 3400 3500 — —		— — 3400 3675 — —		— — 3900 — —	— — 3900 — —
<b>REAR AXLE:</b> Type Make Maximum Capacity (lbs.) Pinion/Ring Gear Type	Semi-Floating GM 3500 Hypoid	Semi-Floating GM 3500 Hypoid	Semi-Floating GM 3500 Hypoid		Semi-Floating GM 3500 Hypoid		Semi-Floating GM 5700 Hypoid	Semi-Floating GM 5700 Hypoid
<b>STANDARD TIRES:</b> Tire Capacity (lbs. each) Front/Rear Inflation (PSI)	Tubeless SBR P205/75R15 1453 35	Tubeless SBR P205/75R15 1453 35	Tubeless SBR P225/75R15 1703 35	Tubeless SBR P235/75R15 1843 35	Tubeless SBR P225/75R15 1703 35	Tubeless SBR P235/75R15 1843 35	Tubeless SBR 8.75R-16.5E 1990/2680 80	Tubeless Nylon Bias Ply 8.75-16.5E 1990/2680 75
<b>WHEELS:</b> Size (in.) Wheel Capacity (lbs. each) Bolt Holes Bolt Circle Diameter (in.) Offset (mm)	15 x 6.00 JJ 1585 5 5 9	15 x 6.00 JJ 1585 5 5 9	15 x 6.00 JJ 1984 5 5 4		15 x 6.00 JJ 1984 5 5 4		16.5 x 6.75 2680 8 6.5 34	16.5 x 6.75 2680 8 6.5 34
Revolutions per mile @ 45 MPH	769	769	737	722	737	722	703	712

<sup>1</sup>Based on model weight. Total available for cargo and equipment.



CHEVY VAN/VANDURA

MODEL	G10/1500 CHEVY VAN/ VANDURA (110-IN. WB)		G10/1500 CHEVY VAN/ VANDURA (125-IN. WB)		G20/2500 CHEVY VAN/ VANDURA (110-IN. WB)		G20/2500 CHEVY VAN/ VANDURA (125-IN. WB)		G30/3500 CHEVY VAN/ VANDURA (125-IN. WB)		G30/3500 EXTENDED CHEVY VAN/ VANDURA (146-IN. WB)	
	GAS		DIESEL		GAS		DIESEL		GAS		DIESEL	
MODEL NUMBER	G11005		G11305		G21005		G21305		G31305		G31605	
SUSPENSION (OPT)												
Option	F60/ G50/ YCE	F60/ G50	F60/ G50/ YCE	J55/ F60/ G50	G50	G50	G50	G50	C6F		—	
PAYLOAD (Max. lbs.) <sup>1</sup>	1628	2018	1517	1906	2582	2096	2460	1704	3974	3617	—	
GVWR (lbs.)	5600	6000	5600	6000	6600	6600	6600	6600	8600		—	
GAWR (lbs.): Front Rear	2906 2906	3166 3166	2906 2906	3166 3166	3400 3400	3500 3400	3400 3400	3670 3400	3900 5360		— —	
FRONT SUSPENSION: Type Standard Spring Cap. (Tot. lbs.)	Ind. Coil Spring 3400		Ind. Coil Spring 3400		Ind. Coil Spring 3400	Ind. Coil Spring 3400	Ind. Coil Spring 3400	Ind. Coil Spring 3400	Ind. Coil Spring 5400		— —	
Front Shock Absorbers Piston Diameter (mm) STD/OPT	32/—		32/—		32/—	32/—	32/—	32/—	32/—		—	
Front Stabilizer Bar Diameter (mm) STD/OPT	1.06/—		1.06/—		1.06/—	1.06/—	1.06/—	1.06/—	1.06/—		—	
REAR SUSPENSION: Type	Semi-Elliptic 2-Stage Multi-Leaf		Semi-Elliptic 2-Stage Multi-Leaf		Semi- Elliptic 2-Stage Multi-Leaf	Semi- Elliptic 2-Stage Multi-Leaf	Semi- Elliptic 2-Stage Multi-Leaf	Semi- Elliptic 2-Stage Multi-Leaf	Semi-Elliptic 2-Stage Multi-Leaf		—	
Standard Spring Capacity (Tot. lbs.) Leaves Per Spring Leaf Total Thickness (in.)	3400 5 1.97		3400 5 1.97		3400 5 2.03	3400 5 2.03	3400 5 2.03	3400 5 2.03	5400 8 3.00		— — —	
Rear Shock Absorbers Piston Diameter (mm) STD/OPT	32/—		32/—		32/—	32/—	32/—	32/—	32/—		—	
FRONT AXLE: Type Make Maximum Capacity (lbs.) Standard Hub Locks Pinion/Ring Gear Type	— — 3400 — —		— — 3400 — —		— — 3400 — —	— — 3500 — —	— — 3400 — —	— — 3675 — —	— — 3900 — —		— — — — —	
REAR AXLE: Type Make Maximum Capacity (lbs.) Pinion/Ring Gear Type	Semi-Floating GM 3500 Hypoid		Semi-Floating GM 3500 Hypoid		Semi-Floating GM 3500 Hypoid	Semi-Floating GM 3500 Hypoid	Semi-Floating GM 3500 Hypoid	Semi-Floating GM 5700 Hypoid	— — 5700 Hypoid		— — — —	
STANDARD TIRES:  Tire Capacity (lbs. each) Front/Rear Inflation (PSI) Max.	Tubeless SBR P205/75R15	Tubeless SBR P215/75R15	Tubeless SBR P205/75R15	Tubeless SBR P215/75R15	Tubeless SBR P225/75R15	Tubeless SBR P235/75R15	Tubeless SBR P225/75R15	Tubeless SBR P235/75R15	Tubeless Nylon Bias Ply 8.75-16.5F; 199G/2680		— — —	
WHEELS: Size (in.) Wheel Capacity (lbs. each) Bolt Holes Bolt Circle Diameter (in.) Offset (mm)	15 x 6.00J 1585 5 5 9		15 x 6.00J 1585 5 5 9		15 x 6.00J 1984 5 5 4	15 x 6.00J 1984 5 5 4	15 x 6.00J 1984 5 5 4	16.5 x 6.75 2580 8 6.5 34		— — — — —		
Revolutions per mile @ 45 MPH	769	753	769	753	737	722	737	722	712		—	

<sup>1</sup>Based on model weight. Total available for cargo and equipment.

# WHEELS AND TIRES

1990  
CHEVY VAN/VANDURA

KEY: — Not Available  
AS - All-Season  
SBR - Steel-Belted Radial Ply  
BW - Blackwall  
WW - Whitewall

WL - White Lettered  
HWY - Highway  
ON-OFF - On-Off Road  
WOL - White Outline Lettered

**P-METRIC RADIAL TIRES**  
The tire load range in P-Metric Series Radial Tires is not identified with letters such as B, C, and D or with ply rating as in the Alpha system. P-Metric tires are offered with a Standard Load Rating or Extra Load Rating which is related to tire pressure.—Standard Load—35 psi Extra Load—41 psi  
Maximum tire pressure will be stamped on the tire sidewall in metric kilo Pascals (kPa) and pounds per square inch (PSI). In metric tire pressure, 7 kilo Pascals (kPa) are equivalent to 1 lb. per sq. in. (PSI). The tire maximum load capacity will also be stamped on the tire sidewall in kilograms and pounds.

TIRE SIZE	TYPE	RPO	PLY	LOAD RANGE	TIRE CAPACITY (LBS. EA.)	MAXIMUM INFLATION (PSI)	WHEEL SIZE (IN.)	WHEEL CAPACITY (LBS. EA.)	BOLT HOLES	BOLT CIRCLE DIA. (IN.)	OFFSET (MM)	REV. PER MILE @ 45 MPH
P205/75R15	AS SBR Front: Rear: Spare:	XCE YCE ZCE	—	Std	1453	35	15 x 6.0JJ	1585	5	5	9	769
P215/75R15	AS SBR Front: Rear: Spare:	XCU YCU ZCU	—	Std	1583	35	15 x 6.0JJ	1585	5	5	9	753
P215/75R15	AS SBR WW Front: Rear: Spare:	XCV YCV ZCV	—	Std	1583	35	15 x 6.0JJ	1585	5	5	9	753
P215/75R15	AS SBR WL Front: Rear: Spare:	XCW YCW ZCW	—	Std	1583	35	15 x 6.0JJ	1585	5	5	9	753
P225/75R15	AS SBR BW Front: Rear: Spare:	XET YET ZET	—	Std	1703	35	15 x 6.0JJ	1984	5	5	4	737
P225/75R15	AS SBR WW Front: Rear: Spare:	XEU YEU ZEU	—	Std	1703	35	15 x 6.0JJ	1984	5	5	4	737
P225/75R15	AS SBR WL Front: Rear: Spare:	XEV YEV ZEV	—	Std	1703	35	15 x 6.0JJ	1984	5	5	4	737
P235/75R15	AS SBR BW Front: Rear: Spare:	XFL YFL ZFL	—	Std	1843	35	15 x 6.0JJ	1984	5	5	4	722
8.75-16.5E	HWY Nylon BW Front: Rear: Spare:	XTH YTH ZTH	10	E	2680	75	16.5 x 6.75	2680	8	6.5	34	712
8.75R-16.5E	HWY SBR BW Front: Rear: Spare:	XVD YVD ZVD	10	E	2680	80	16.5 x 6.75	2680	8	6.5	34	703

## CHEVY VAN/VANDURA OPTIONAL WHEELS

RPO	DESCRIPTION	WHEEL SIZE (IN.)	CAPACITY	BOLT HOLES	BOLT CIRCLE DIA. (IN.)	OFFSET (MM)
N67 <sup>1</sup>	Wheels—Rally (Includes Bright Trim Rings and Special Hub Caps)	15 x 6.50	1843	5	5	14
PF3 <sup>1</sup>	Wheels—Aluminum, Cast (Includes Special Hub Caps)	15 x 6.50	1843	5	5	14

<sup>1</sup>N/A G30/3500 models.

## CHEVY VAN/VANDURA

MODEL	G10/1500 CHEVY VAN/VANDURA (110-IN. AND 125-IN. WB)	G20/2500 CHEVY VAN/VANDURA (110-IN. AND 125-IN. WB)		G30/3500 CHEVY VAN/VANDURA (125-IN. WB)	G30/3500 CHEVY VAN/VANDURA (125-IN. WB)		G30/3500 EXTENDED CHEVY VAN/VANDURA (146-IN. WB)
		GAS	DIESEL		GAS	DIESEL	
MODEL NUMBER	G11005-G11305	G21005-G21305		G31305	G31305/C6P		G31605/C6P
			B3J			B3J	
<b>STEERING</b>							
Type	Variable Ratio Integral Power	Variable Ratio Integral Power		Variable Ratio Integral Power	Variable Ratio Integral Power		Variable Ratio Integral Power
Steering Ratio	17.2:1	17.2:1		17.2:1	17.2:1		17.2:1
Turning Diameter: Curb-To-Curb (ft.) Wall-To-Wall (ft.)	41.3 - 45.9 42.7 - 47.5	41.3 - 46.0 42.7 - 47.5		48.5 49.8	48.5 49.8		54.0 55.3
<b>BRAKES</b>							
GVWR (lbs.)	4900/5600 6000	6600	6600	7100	8600	8600	8600
Type (Rear Wheel Anti-Lock Braking System)	Vac. Power Front Disc/ Rear Drum	Vac. Power Front Disc/ Rear Drum	Hyd. Power Front Disc/ Rear Drum	Vac. Power Front Disc/ Rear Drum	Vac. Power Front Disc/ Rear Drum	Hyd. Power Front Disc/ Rear Drum	Vac. Power Front Disc/ Rear Drum
Booster (Diaphragm Diameter) (in.)	9.5 x 8.0 Tandem	9.5 x 8.0 Tandem	—	9.5 x 8.0 Tandem	9.5 x 8.0 Tandem	—	9.5 x 8.0 Tandem
Front Rotor Size (Diameter x Thickness) (in.)	11.86 x 1.29	11.86 x 1.29	11.86 x 1.29	12.50 x 1.28	12.50 x 1.28	12.50 x 1.28	12.50 x 1.28
Front Facing Contact Per Axle (sq. in.)	37.63	37.63	37.63	42.98	42.98	42.98	42.98
Rear Drum Size (Diameter x Width) (in.)	11.0 x 2.0	11.15 x 2.75	11.15 x 2.75	13.0 x 2.5	13.0 x 2.5	13.0 x 2.5	13.0 x 2.5
Rear Facing Contact Per Axle (sq. in.)	107.42	107.42	107.42	116.73	116.73	116.73	116.73
Parking Brake Type	Cable To Rear Wheels	Cable To Rear Wheels	Cable To Rear Wheels	Cable To Rear Wheels	Cable To Rear Wheels	Cable To Rear Wheels	Cable To Rear Wheels

# ELECTRICAL

1990

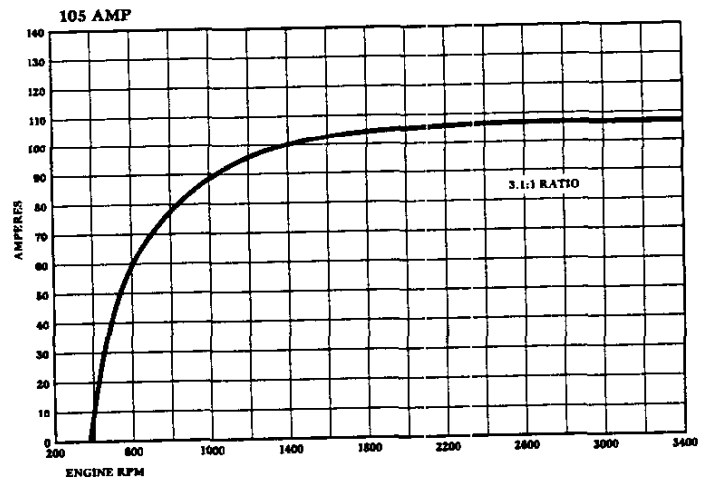
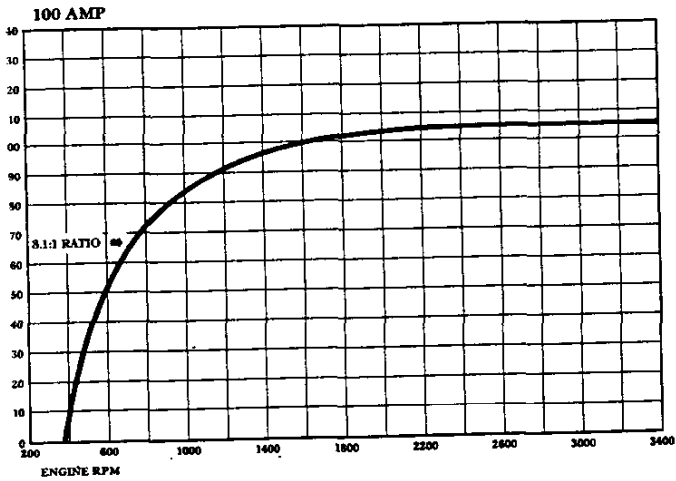
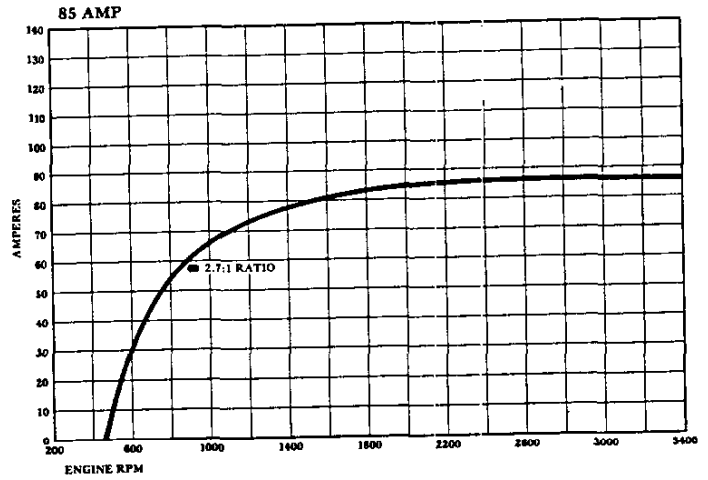
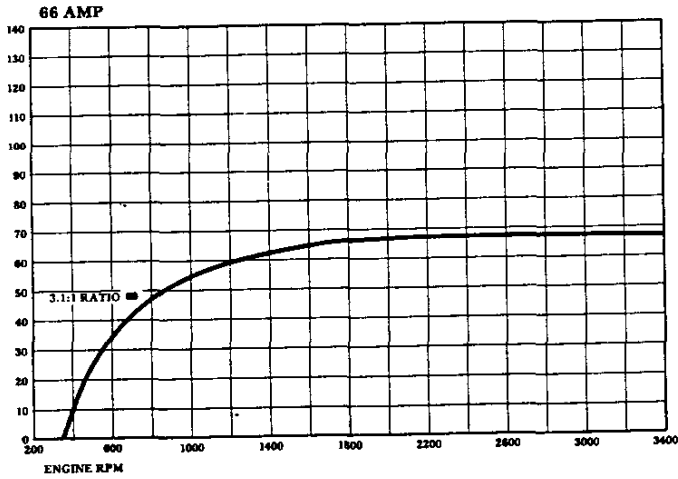
## CHEVY VAN/VANDURA

MODEL	G10/1500 CHEVY VAN/ VANDURA (110-IN. AND 125-IN. WB)	G20/2500 CHEVY VAN/ VANDURA (110-IN. AND 125-IN. WB)		G30/3500 CHEVY VAN/ VANDURA (125-IN. WB)	G30/3500 CHEVY VAN/ VANDURA (125-IN. WB)		G30/3500 EXTENDED CHEVY/VAN VANDURA (146-IN. WB)
		GAS	DIESEL		GAS	GAS	
MODEL NUMBER	G11005-G11305	G21005-G21305		G31305	G31305/C6P		G31605/C6P
ELECTRICAL							
ENGINE STD./OPT.	4.3L V6/5.0L V8	4.3L V6 5.0L V8 5.7L V8	6.2L V8	4.3L V6	5.7L V8 7.4L V8	6.2L V8	5.7L V8 7.4L V8
STANDARD BATTERY: Cold Cranking Amps @ 0°F @ -20°F	630 490	630 490	Two at 540 Each 410 Each	630 490	630 490	Two at 540 Each 410 Each	630 490
Reserve Capacity Minutes @ 80°F	115	115	115	115	115	115	115
STANDARD ALTERNATOR: Max. Capacity (Amps)	85	85	66	85	85	66	85
Max. Watts @ 12 Volts	1020	1020	792	1020	1020	792	1020
Nominal Amp @ Idle (Approx.)	30	30	23	30	30	23	30
Drive Pulley Ratio	2.7:1	2.7:1	3.1:1	2.7:1	2.7:1	3.1:1	2.7:1
Model Number	CS130	CS130	12-SI-100	CS130	CS130	12-SI-100	CS130
OPTIONAL ALTERNATOR: <sup>1</sup>	w/C60 or C/69	w/C60 or C69	—	w/C60 or C69	w/C60 or C69 w/o 7.4L Eng.	—	w/C60 or C69 w/o 7.4L Eng.
Max. Capacity (Amps)	100	100	—	100	100	—	100
Max. Watts @ 12 Volts	1200	1200	—	1200	1200	—	1200
Nominal Amp @ Idle (Approx.)	54	54	—	54	54	—	54
Drive Pulley Ratio	3.1:1	3.1:1	—	3.1:1	3.1:1	—	3.1:1
Model Number	CS130	CS130	—	CS130	CS130	—	CS130
OPTIONAL ALTERNATOR: <sup>1</sup>	—	—	—	—	w/C69 & 7.4L Eng.	—	w/C69 & 7.4L Eng.
Max. Capacity (Amps)	—	—	—	—	105	—	105
Max. Watts @ 12 Volts	—	—	—	—	1260	—	1260
Nominal Amp @ Idle (Approx.)	—	—	—	—	63	—	63
Drive Pulley Ratio	—	—	—	—	3.1:1	—	3.1:1
Model Number	—	—	—	—	CS130	—	CS130

<sup>1</sup>Note: This alternator is available only as part of noted RPO.

ALTERNATOR CURVES

(Refer to Generator Chart for Availability)



MODEL	G10/1500 CHEVY VAN/ VANDURA		G20/2500 CHEVY VAN/ VANDURA				G30/3500 CHEVY VAN/ VANDURA (125-IN. WB)	G30/3500 CHEVY VAN/ VANDURA (125-IN. WB)			G30/3500 EXTENDED CHEVY VAN/ VANDURA (146-IN. WB)	
MODEL NUMBER	G11005-G11305		G21005-G21305				G31305	G31305/C6P			G31605/C6P	
<b>STANDARD COOLING SYSTEM</b>												
<b>ENGINE</b>	4.3L	5.0L	4.3L	5.0L	5.7L	6.2L	4.3L <sup>1</sup>	5.7L	7.4L	6.2L	5.7L	7.4L
Standard Radiator Thickness (in.)	.93	.98	.93	.98	.98	1.57	.93	.98	1.34	1.57	.98	1.34
Total System Cap. (gal.)	3.4	4.2	3.4	4.2	4.2	6.3	3.4	4.2	5.8	6.2	4.2	5.8
Standard Fan (No. Blades x Diameter x Pitch)	3 x 19 x 2.0	3 x 19 x 2.0	3 x 19 x 2.0	3 x 19 x 2.0	3 x 19 x 2.0	5 x 20 x 2.87	3 x 19 x 2.0	5 x 19.5 x 2.0	5 x 20.0 x 2.61	5 x 20 x 2.87	5 x 19.5 x 2.0	5 x 20.0 x 2.61
<b>OPTIONAL COOLING SYSTEMS</b>												
<b>ENGINE</b>	4.3L	5.0L	4.3L	5.0L	5.7L	6.2L	4.3L	5.7L	7.4L	6.2L	5.7L	7.4L
<b>OPT. H.D. RADIATOR OR AIR CONDITIONING</b>	V05/C60/C69											
Radiator Thickness (in.)	.93	.98	.93	.98	.98	1.57	.93	1.57	1.34	2.17	1.57	1.34
Total System Cap. (gal.)	3.3	4.2	3.3	4.2	4.2	6.2	3.3	4.2	5.8	6.2	4.2	5.8
Fan (No. Blades x Diameter x Pitch)	5 x 19.5 x 2.0	5 x 19.5 x 2.0	5 x 19.5 x 2.0	5 x 19.5 x 2.0	3 x 19 x 2.0	5 x 20 x 2.87	5 x 19.5 x 2.0	5 x 19.5 x 2.0	5 x 20 x 2.61	5 x 20 x 2.87	5 x 19.5 x 2.0	5 x 20 x 2.61
<b>OPT. H.D. RADIATOR AND TRANS. OIL COOLER</b>	V02 <sup>3</sup>	V02 <sup>3</sup>	V02 <sup>3</sup>	V02 <sup>3</sup>	V02/V05	—	V02 <sup>3</sup>	V02 <sup>3</sup>	—	V02 <sup>3</sup>	V02 <sup>3</sup>	—
Radiator Thickness (in.)	1.34	1.57	1.34	1.57	1.57	—	1.34	1.57	—	2.17	1.57	—
Total System Cap. (gal.)	3.4	4.2	3.4	4.5	4.5	—	3.4	4.5	—	6.2	4.5	—
Fan (No. Blades x Diameter x Pitch)	5 x 19.5 x 2.0	5 x 19.5 x 2.0	5 x 19.5 x 2.0	5 x 19.5 x 2.0	5 x 19.5 x 2.0	—	5 x 19.5 x 2.0	5 x 19.5 x 2.0	—	5 x 20 x 2.87	5 x 19.5 x 2.0	—

<sup>1</sup>N/A In California    <sup>2</sup>C60 N/A LB4 Engine w/MM7 Transmission on G10/G20 Models  
<sup>3</sup>Reqs. V05 H.D. Radiator or C60, or C69 Air Conditioning. (LB4 Engine also Reqs. KC4 Engine Oil Cooler) (Included with Z82 Trailing)

MODEL	G10/1500 CHEVY VAN/ VANDURA (110-IN. WB)	G10/2500 CHEVY VAN/ VANDURA (125-IN. WB)	G20/2500 CHEVY VAN/ VANDURA (110-IN. WB)		G20/2500 CHEVY VAN/ VANDURA (125-IN. WB)		G30/3500 CHEVY VAN/ VANDURA (125-IN. WB)	G30/3500 CHEVY VAN/ VANDURA (125-IN. WB)		G30/3500 EXTENDED CHEVY VAN/ VANDURA (146-IN. WB)
			GAS	DIESEL	GAS	DIESEL		GAS	GAS	
MODEL NUMBER	G11005	G11305	G21005		G21305		G31305	G31305/C6P		G31605/C6P
				B3J		B3J			B3J	
<b>EXTERIOR DIMENSIONS</b>										
<b>BODY:</b>										
Wheelbase (in.)	110	125	110	110	125	125	125	125	125	146
Overall Length (in.)	178.2	202.2	178.2	178.2	202.2	202.2	202.2	202.2	202.2	223.2
Overall Height (in.)	80.0	79.7	80.9	80.5	80.9	80.5	82.3	82.3	82.3	82.3
Maximum Width (in.)	79.5	79.5	79.5	79.5	79.5	79.5	79.5	79.5	79.5	79.5
Bumper To Axle—Front Rear (in.)	29.6 38.5	29.6 47.5	29.6 38.5	29.6 38.5	29.6 47.5	29.6 47.5	29.6 47.5	29.6 47.5	29.6 47.5	29.6 47.5
Ground To Top of Rear Load Floor (in.)	25.0	24.7	25.9	25.9	25.5	25.5	27.3	27.3	27.3	30.1
Ground Clearance (in.) Front and Rear	6.9/7.8	6.8/7.6	8.3/9.1	8.4/9.6	8.1/8.8	8.4/9.4	10.2/8.0	10.0/8.5	9.4/8.5	9.1/9.6
Sliding Side Load Door (in.) Opening Height Opening Width	49.3 44.2	49.3 44.2	49.3 44.2	49.3 44.2	49.3 44.2	49.3 44.2	49.3 44.2	49.3 44.2	49.3 44.2	— —
Swing Out Side Load Door (in.) Opening Height—Large Door Opening Width—Small Door	48.5 30.3 19.2	48.5 30.3 19.2	48.5 30.3 19.2	48.5 30.3 19.2	48.5 30.3 19.2	48.5 30.3 19.2	48.5 30.3 19.2	48.5 30.3 19.2	48.5 30.3 19.2	48.5 30.3 19.2
Rear Load Door: (in.) Opening Height Opening Width	48.9 54.4	48.9 54.4	48.9 54.4	48.9 54.4	48.9 54.4	48.9 54.4	48.9 54.4	48.9 54.4	48.9 54.4	48.9 54.4
<b>INTERIOR DIMENSIONS</b>										
Headroom (in.)	40.8	40.8	40.8	40.8	40.8	40.8	40.8	40.8	40.8	40.8
Legroom (in.)	39.5	39.5	39.5	39.5	39.5	39.5	39.5	39.5	39.5	39.5
Shoulder Room (in.)	68.8	68.8	68.8	68.8	68.8	68.8	68.8	68.8	68.8	68.8
Hip Room (in.)	69.7	69.7	69.7	69.7	69.7	69.7	69.7	69.7	69.7	69.7
Load Floor Length (in.)	102.5	126.5	126.5	126.5	126.5	126.5	126.5	126.5	126.5	147.5
Interior Height (in.)	53.7	53.8	53.7	53.8	53.8	53.8	53.8	53.8	53.8	53.8
Interior Width (in.): Beltline Between Wheelhousing	70.8 53.5	70.8 53.5	70.8 53.5	70.8 53.5	70.8 53.5	70.8 53.5	70.8 53.5	70.8 53.5	70.8 53.5	70.8 53.5
<b>CARGO CAPACITY:</b> (cu. ft.) w/Driver's Seat	207.0	260.0	260.0	260.0	260.0	260.0	260.0	260.0	260.0	306.0
<b>FUEL TANK</b>										
Std. Tank Nominal (gal.)	22	22	22	22	22	22	22	22	22	33
Location of Tank	Between Frame Rails Behind Rear Axle	Between Frame Rails Behind Rear Axle	Between Frame Rails Behind Rear Axle	Between Frame Rails Behind Rear Axle	Between Frame Rails Behind Rear Axle	Between Frame Rails Behind Rear Axle	Between Frame Rails Behind Rear Axle	Between Frame Rails Behind Rear Axle	Between Frame Rails Behind Rear Axle	Between Frame Rails Behind Rear Axle
Location of Filler	Left Rear	Left Rear	Left Rear	Left Rear	Left Rear	Left Rear	Left Rear	Left Rear	Left Rear	Left Rear
Optional Tank Nominal (gal.)	—	33	—	—	33	33	33	33	33	—
Location of Tank	—	Between Frame Rails Behind Rear Axle	—	—	Between Frame Rails Behind Rear Axle	Between Frame Rails Behind Rear Axle	Between Frame Rails Behind Rear Axle	Between Frame Rails Behind Rear Axle	Between Frame Rails Behind Rear Axle	—
Location of Filler	—	Left Rear	—	—	Left Rear	Left Rear	Left Rear	Left Rear	Left Rear	—

# OPTIONS

1990  
CHEVY VAN/VANDURA

KEY: S Standard O Optional — Not Available

- 1. G10 CHEVY VAN/VANDURA 110-IN. WB (G11005)
- 2. G10 CHEVY VAN/VANDURA 125-IN. WB (G11305)
- 3. G20 CHEVY VAN/VANDURA 110-IN. WB (G21005)
- 4. G20 CHEVY VAN/VANDURA 125-IN. WB (G21305)

- 5. G30 CHEVY VAN/VANDURA 125-IN. WB (G31305)
- 6. G30 CHEVY VAN/VANDURA 125-IN. WB. (G31305/C6P)
- 7. G30 EXTENDED CHEVY VAN/VANDURA 146-IN. W.B. (31605)

OPTION	CODE	DESCRIPTION	RESTRICTIONS	MODELS																
				2-WHEEL DRIVE																
				1	2	3	4	5	6	7										
<b>AIR CONDITIONING</b>																				
Front	C60	Incl w/C69 Front and Rear Air		O	O	O	O	O	O	O										
Front and Rear	C69	Incls C60 Front Air	Reqs G50 rear springs	O	O	O	O	O	O	O										
<b>APPEARANCE PACKAGE, Deluxe Front</b>	V22	Incls Dark Argent Grill w/Bright Trim and Dual Rectangular Headlamps; High Beam Lamps are Halogen		O	O	O	O	O	O	O										
<b>AXLE, REAR Locking Differential</b>	G80	(See Powertrains)	N/A L19 Engine																	
<b>BUMPER EQUIPMENT Bumpers, Front and Rear</b>	V37	Chromed		O	O	O	O	O	O	O										
<b>COLD CLIMATE PACKAGE</b>	V10	Incls Engine Block Heater and Increased Anti-Freeze Protection	N/A Diesel Engine	O	O	O	O	O	O	O										
<b>CONVENIENCE PACKAGE Driver's</b>	ZQ3	Incls Comfortilt Steering Wheel and Electronic Speed Control		O	O	O	O	O	O	O										
Operating	ZQ2	Incls AU3 Power Door Locks and Power Windows		O	O	O	O	O	O	O										
<b>COOLING SYSTEM: Engine Oil</b>	KC4	Incl w/Z82 Trailering and w/LB4 engine on G30/3500 models, or w/L19 Engine	N/A B3J Diesel; w/G10/1500 Reqs LB4 Eng and MX0 Trans; w/G20/2500 w/L03 or L05 Eng. Reqs V02 H.D. Cooling w/G30/3500 w/L05 Eng. Reqs V02 Cooling	O	O	O	O	O	O	O										
Radiator and Transmission Oil, Heavy-Duty	V02	Incl w/Z82 Trailering. Incls H.D. Radiator and H.D. Trans Oil Cooler	G10/1500 and G20/2500 Reqs V05 Cooling, C60 or C69 Air; w/LB4 Eng. Reqs KC4 Eng. Oil Cooler. N/A L19 Eng. w/G30/3500	O	O	O	O	O	O	O										
Heavy-Duty Radiator	V05		N/A C60 or C69 Air Conditioning; Reqs KC4 Cooler w/LB4 Eng	O	O	O	O	O	O	O										
<b>DIESEL EQUIPMENT PACKAGE</b>	B3J	Incls Engine Oil Cooler, Engine Block Heater, H.D. Radiator, Dual Exhaust System, Additional Insulation and Special Instrumentation	Req w/LH6 or LL4 Engines	O	O	O	O	O	O	O										
<b>DOOR LOCK SYSTEM, POWER</b>	AU3	All Doors; Incl w/ZQ2 Conv Pkg		O	O	O	O	O	O	O										
<b>DOOR, SIDE REAR Swing-Out Sliding</b>	E24 YA2		Standard Opt At No Extra Cost	S O	S O	S O	S O	S O	S O	S O										
<b>ENGINES</b>		(See Powertrains)																		
4.3-liter V6 EFI	LB4		N/A C6P																	
5.0-liter V8 EFI	L03																			
5.7-liter V8 EFI	L05																			
7.4-liter V8 EFI	L19																			
6.2-liter V8 Diesel	LH6		Reqs B3J Equipment																	
6.2-liter V8 Diesel	LL4	Heavy-Duty Diesel	Reqs B3J Equipment																	
<b>FLOOR COVERING</b>	B30	Carpeting, Floor and Wheelhouse; Front Area Only; Incls Stepwell Mats and B32 Floor Mats	Reqs A57 Seat; N/A Black Trim	O	O	O	O	O	O	O										
<b>FLOOR MATS</b>	B32	Rubber Mat For Each Front Seat Position	Reqs B30 Floor Covering	O	O	O	O	O	O	O										



**1990 CHEVY VAN/VANDURA**

**OPTIONS**

KEY: S Standard O Optional — Not Available

- 1. G10 CHEVY VAN/VANDURA 110-IN. WB (G11005)
- 2. G10 CHEVY VAN/VANDURA 125-IN. WB (G11305)
- 3. G20 CHEVY VAN/VANDURA 110-IN. WB (G21005)
- 4. G20 CHEVY VAN/VANDURA 125-IN. WB (G21305)

- 5. G30 CHEVY VAN/VANDURA 125-IN. WB (G31305)
- 6. G30 CHEVY VAN/VANDURA 125-IN. WB. (G31305/C6P)
- 7. G30 EXTENDED CHEVY VAN/VANDURA 146-IN. W.B. (31605)

OPTION	CODE	DESCRIPTION	RESTRICTIONS	MODELS																	
				2-WHEEL DRIVE																	
				1	2	3	4	5	6	7											
<b>GLASS:</b> Body, 6 Windows	A07	Incls A08 Glass; w/o ZX6 Glass Incls A12 Glass		O	O	O	O	O	O	O											
RH Body Side	A08	Incl w/A07 Glass; Incls Fixed Glass for RH Rear Quarter Panel	Reqs ZW3 or ZX6 Glass	O	O	O	O	O	O	O											
Rear Door, Fixed	A12	Incl w/A07 Glass; Incls Interior Rearview Mirror; Incl w/ZW3	N/A ZX6 Glass	O	O	O	O	O	O	O											
Fixed Glass Package	ZW3	Incls Fixed Rear Door and Side Door Glass		O	O	O	O	O	O	O											
Swing-Out Glass Package	ZX6	Incls Swing-out Rear Door and Side Door Glass and Interior Rearview Mirror		O	O	O	O	O	O	O											
<b>HEATER, AUXILIARY</b> Rear Area	C36	Located on Left Side Forward of Rear Wheelhouse		O	O	O	O	O	O	O											
<b>LIGHTING, AUXILIARY</b>	TR9	Incls Dome and Reading Light, Courtesy, Ashtray, Glove Box and Underhood Lamps and Headlamp Warning Buzzer		O	O	O	O	O	O	O											
<b>MIRRORS, EXTERIOR</b>	D45	Below-Eye-Line Type; Stainless Steel		O	O	O	O	O	O	O											
<b>PAINT, EXTERIOR</b> Solid	ZY1	(See Color and Trim)		S	S	S	S	S	S	S											
<b>RADIO EQUIPMENT:</b> Electronically-Tuned AM/FM Stereo Radio w/Seek-Scan and Digital Clock	UM7	14 Presets, Digital Display, Two 4" x 6" Front Speakers, 13 Watts Total Power Output		O	O	O	O	O	O	O											
Electronically-Tuned AM/FM Stereo Radio w/Seek-Scan, Stereo Cassette Tape and Digital Clock	UM6	14 Presets, Digital Display, Two 4" x 6" Coaxial Front Speakers, 13 Watts Total Power Output		O	O	O	O	O	O	O											
Electronically-Tuned AM Stereo/FM Stereo Radio w/Seek-Scan, Stereo Cassette Tape w/Search-Repeat, Graphic Equalizer and Digital Clock	UX1	14 Presets, Digital Display, Two 4" x 6" Coaxial Front Speakers, 13 Watts Total Power Output		O	O	O	O	O	O	O											
Radio Delete	UL5			O	O	O	O	O	O	O											
<b>SCHOOL BUS CHASSIS EQUIPMENT</b>	B3D		Reqs L05 or LL4 Eng	—	—	—	—	—	—	O	O										
<b>SEAT</b>	A57	Front, Auxiliary		O	O	O	O	O	O	O											
<b>SPRINGS, H.D.</b> Front	F60	Capacity—1700-lbs. each		O	O	—	—	—	—	—											
Rear	G50	Capacity—1700-lbs. each w/G10/1500 or 2100-lbs. each w/G20/2500		O	O	O	O	S	S	—											
<b>TANK, FUEL</b>	NL7	Approx. 33-gal Total Vehicle Capacity		—	O	—	O	O	O	S											

# OPTIONS

1990  
CHEVY VAN/VANDURA

KEY: S Standard O Optional — Not Available

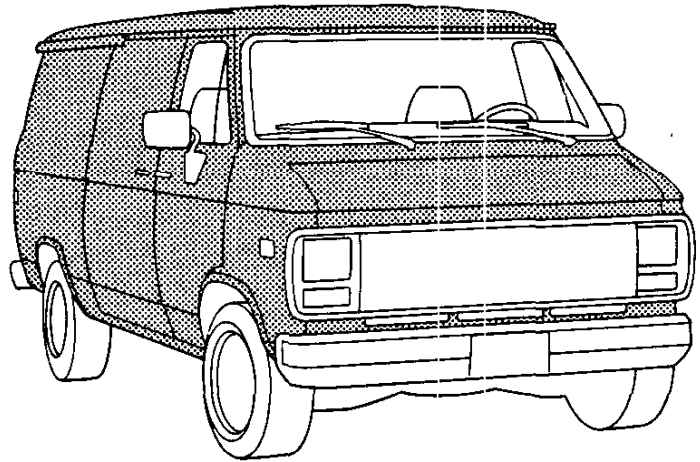
- 1. G10 CHEVY VAN/VANDURA 110-IN. WB (G11005)
- 2. G10 CHEVY VAN/VANDURA 125-IN. WB (G11305)
- 3. G20 CHEVY VAN/VANDURA 110-IN. WB (G21005)
- 4. G20 CHEVY VAN/VANDURA 125-IN. WB (G21305)

- 5. G30 CHEVY VAN/VANDURA 125-IN. WB (G31305)
- 6. G30 CHEVY VAN/VANDURA 125-IN. WB. (G31305/C6P)
- 7. G30 EXTENDED CHEVY VAN/VANDURA 146-IN. W.B. (31605)

				MODELS												
				2-WHEEL DRIVE												
OPTION	CODE	DESCRIPTION	RESTRICTIONS	1	2	3	4	5	6	7						
<b>TIRE EQUIPMENT</b>		(See Wheels and Tires For Details)														
P205/75R15 BW	XCE YCE ZCE			S	S	—	—	—	—	—						
P215/75R15 BW	XCU YCU ZCU			O	O	—	—	—	—	—						
P215/75R15 WS	XCV YCV ZCV			O	O	—	—	—	—	—						
P215/75R15 WL	XCW YCW ZCW			O	O	—	—	—	—	—						
P225/75R15 BW	XET YET ZET		Available w/LB4, L03 or L05 Engine Only. ZET Spare Tire Opt	—	—	S	S	—	—	—						
P225/75R15 WS	XEU YEU ZEU		Available w/LB4, L03 or L05 Engine Only. ZEU Spare Tire Opt	—	—	O	O	—	—	—						
P225/75R15 WL	XEV YEV ZEV		Available w/LB4, L03 or L05 Engine Only. ZEV Spare Tire Opt	—	—	O	O	—	—	—						
P235/75R15 BW	XFL YFL ZFL		Available w/LH6 Diesel Engine Only. ZFL Spare Tire Opt	—	—	O	O	—	—	—						
8.75-16.5E	XTH YTH ZTH		ZTH Spare Tire Opt	—	—	—	—	—	S	S						
8.75R-16.5E	XVD YVD ZVD		ZVD Spare Tire Opt	—	—	—	—	S	O	O						
<b>TRAILERING SPECIAL EQUIPMENT</b>																
Light-Duty	Z72	Incls Deadweight Trailer Hitch and Wiring Harness		O	O	O	O	O	O	O						
Heavy-Duty	Z82	Incls Weight Distributing Platform Trailer Hitch; 7-Lead Wiring Harness, H.D. Flasher	N/A LB4 Eng; Incls KC4 Eng Oil Cooler, V02 H.D. Radiator and Trans Oil Cooler w/L04 or L05 Eng; G20/2500 Models Req 3.73 Axle Ratio	—	—	O	O	O	O	O						
<b>TRANSMISSIONS</b>			(See Powertrains)													
4-Speed Automatic with Overdrive	MX0			S	S	S	S	S	—	—						
3-Speed Automatic	MX1			O	O	O	O	O	S	S						
<b>WHEELS</b>																
Aluminum	PF3	Incls Four 15" x 6.5" Aluminum Wheels w/Special Hub Caps and 15" x 6.00" Steel Spare Wheel		O	O	O	O	—	—	—						
Rally	N67	Incls Bright Wheel Trim Rings and Special Hub Caps; Incls Matching Spare Wheel		O	O	O	O	—	—	—						

# SOLID COLOR (ZY1)

Solid color paint (ZY1) is standard on all models. All painted areas of the body are the same color. Below are the interior trim color and exterior paint combinations recommended by Chevrolet/GMC, however, any available interior trim color may be ordered. For further information, refer to Seats and Interior Trim pages as well as the Ordering Guide.



KEY: —Not Available

EXTERIOR COLORS		STRIPE COLORS	INTERIOR COLORS				
COLOR 1	COLOR 2		Black	Blue	Garnet	Saddle	Slate Gray
12 Frost White	—	—	•	•	•	•	•
19 Midnight Black	—	—	•	•	•	•	•
21 Light Blue Met.	—	—		•			•
37 Wheat	—	—				•	
40 Woodlands Brown Met.	—	—				•	
44 Emerald Met.	—	—		•		•	
47 Royal Blue Met.	—	—			•		•
72 Apple Red	—	—			•		•
78 Burgundy Met.	—	—			•		•
90 Steel Gray Met.	—	—	•		•		•

CHEVY VAN/VANDURA

HOW TO USE GCWRs TO DETERMINE POWERTRAIN AND REAR AXLE RATIO FOR TRAILERING

Perhaps you prefer to use Gross Combination Weight Ratings (GCWRs) to determine the engine, transmission and rear axle ratio you will require to tow a special trailer with your truck. The chart below allows you to do just that. It shows you the maximum allowable GCWR based on all the available truck engines and rear axle

ratios with automatic or manual transmissions. The GCWR includes the total loaded weight of both the truck and trailer. Any available engine may be used for trailering if the GCWR shown is not exceeded. The trailer weight can be increased by 25% if the vehicle speed will not exceed 25 mph.

GROSS COMBINATION WEIGHT RATING (GCWR) Includes Weight of Both Truck and Trailer By Engine & Axle Ratio For Recreational Applications																				
With Automatic Transmission																				
GCWR (lb.)	6000	6500	7000	7500	8000	8500	9000	9500	10,000	10,500	11,000	11,500	12,000	12,500	13,500	14,000	14,500	15,000	16,000	19,000
Engines	Rear Axle Ratios																			
4.3L (262) V8 Gas								3.42	3.73											
5.0L (305) V8 Gas								3.08		3.42		3.73								
5.7L (350) V8 Gas									3.08		3.42		3.73		4.10					
6.2L (379) V8 Diesel								3.08		3.42		3.73		4.10						
7.4L (454) V8 Gas															3.73					4.10

When towing a trailer in excess of 3000 lbs. with a truck equipped with a 4-speed automatic transmission, it is recommended to shift to third gear range ("3") instead of overdrive ("0") for normal towing, and to manually downshift as required on uphill and downhill grades.

Note: Model and driveline combinations must be verified by your local dealer for correct emissions equipment.

GENERAL TRAILERING INFORMATION

AVAILABLE TRAILERING EQUIPMENT

Chevrolet/GMC Truck offer a wide selection of available options for trailering and a few of them are described here.

LIGHT-DUTY TRAILER HITCH

For hauling trailers up to 2000 lbs. with a maximum tongue load of 200 lbs. A 1 7/8" -diameter ball is included. (Dealer-installed accessory. See chart for part numbers.)

LOAD-DISTRIBUTING PLATFORM

Required when towing trailers over 2000 lbs. Installs quickly and easily. (Dealer-installed accessory. See chart for part numbers.)

WIRING HARNESSES

5-wire used with trailers up to 2000 lbs. gross weight and 7-wire for larger trailers. Harnesses tie into vehicle's electrical system to give your trailer lights, plus electric brakes or battery charging. (See diagram for wiring color code.)

HITCH BALLS

1 7/8" -diameter ball is standard with light-duty hitches. It is also available as an accessory: Part No. 981148. A 2" -diameter ball is also available for hitches as Part No. 980670.

DEALER-INSTALLED TRAILER HITCHES

	Light Up to 2000 Lbs. 200-Lb. Tongue Load	Light/Medium Up to 2000-Lbs. 200-Lb. Tongue Load	Heavy Up to 6000-Lbs. 750-Lb. Tongue Load	Heavy Up to 7000-Lbs. 850-Lb. Tongue Load
Type of Hitch	Deadweight <sup>1</sup>	Rear Step Bumper <sup>2</sup>	Weight-Distrib. Platform	Weight-Distrib. Platform
Chevy Van/Vandura	995742	995689-Painted	—	995745

<sup>1</sup> Deadweight hitch includes 1 7/8" ball. <sup>2</sup> 1 7/8" ball for step-type bumper—Part No. 981148. 2" ball for step-type bumper—Part No. 980670.

MIRRORS

Trucks used as tow vehicles will require outside mirrors with extensions that exceed the width of the trailer to be towed. Optional mirrors with larger mounting brackets are available with all truck models.

TRUCK WIRING CODE

The following color code for trucks should be used when installing trailer wiring harnesses.

- Blue. Used for electric trailer brakes or auxiliary wiring.
- Red. Used for battery charging. Connects to starter solenoid. (7-wire harness only).
- Light Green. Backup lights (7-wire harness only).
- Brown. Taillight and running lights.
- Yellow. Left stop and turn signal.
- Dark Green. Right stop and turn signal.
- White. Ground.

COOLERS AND COOLING

Trailering creates higher-than-normal temperatures in coolant, engine and transmission oil. To help control these temperatures, consider the following separate options.

**RPO V02.** This is an extra-capacity heavy-duty automatic transmission oil cooler option. (Included in RPO Z82 Trailering Special Package.)

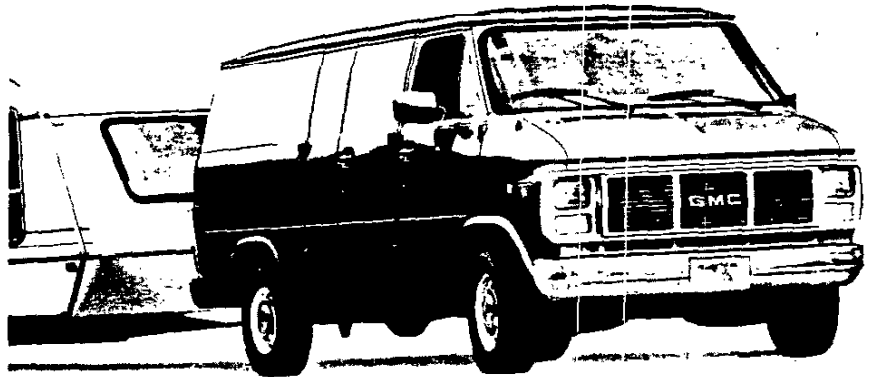
**RPO KC4.** This optional engine oil cooler circulates oil through a separate cooler mounted ahead of the radiator. (Included in RPO Z82 Trailering Package.)

**NOTE:** If the vehicle is equipped with a step bumper, the "V" shaped foot on the trailer tongue could dent your step bumper in a sharp turn. Before towing under these conditions, check the distance from the foot front edge to the center of the couple ball socket. If this dimension is less than 12 inches, remove the foot on the trailer or possible damage to the bumper could occur.

## TRAILERING SPECIAL PACKAGES

If you intend to tow a light trailer (up to 2000 lbs. gross weight) with your new Chevy Van/Vandura, a Trailering Special Package (RPO Z72) is highly recommended. RPO Z72 includes a deadweight hitch which is bolted to the rear bumper and undercarriage and includes a 1 1/4" diameter hitch ball. This package also includes a light-duty 5-wire wiring harness with a male-female connector and a pigtail that must be spliced to the trailer wiring harness. This allows the electrical system to activate trailer lights and other electrical systems.

If you intend to tow a medium trailer (up to 4000 lbs. gross weight) or a heavy trailer (up to 6000 lbs. gross weight), heavy-duty Trailering Special Package RPO Z82 is recommended for medium trailers and is a required option for heavy trailers. (This Z82 option is also required, regardless of gross trailer weight, if your trailer tongue weight exceeds 400 lbs.) RPO Z82 includes a weight-distributing platform hitch receiver which is bolted to the undercarriage and a heavy-duty 7-wire wiring harness that can be spliced into your special connector. With either trailering package, the wiring harness



comes coiled and taped. The harnesses will be located under the body at center rear.

See the chart below—Required/Recommended Trailering Equipment—for trailering options in addition to Trailering Special Packages.

The chart below indicates, in bold type, the trailering equipment required for light, medium

and heavy trailer towing. Additional recommended options are also indicated. To help you in ordering, each column lists Regular Production Option (RPO) numbers.

Other important trailering information is available in the Owner's Manual of every 1990 Chevrolet/GMC Truck.

## REQUIRED/RECOMMENDED TRAILERING EQUIPMENT

Trailer Classification	Gas-Powered Chevy Van/Vandura						Diesel-Powered Chevy Van/Vandura						
	Light		Medium		Heavy		Light		Medium		Heavy		
Maximum Gross Trailer Weight (lbs.) <sup>1</sup>	2000		4000		6500	7500	10,000	2000		4000		6000	6500
Maximum Tongue Load (lbs.)	200		500		800	900	1000	200		500		750	800
Truck Series	G10/1500 & G20/2500	G30/3500	G10/1500 & G20/2500	G30/3500	G10/1500	G20/2500	G30/3500	G20/2500	G30/3500	G20/2500	G30/3500	G20/2500	G30/3500
Trailering Special Package	Z72	Z72	Z82	Z82	Z82	Z82	Z82	Z72	Z72	Z82	Z82	Z82	Z82
5-Wire Wiring Harness (incl. in RPO Z72)	X	X	—	—	—	—	—	X	X	—	—	—	—
7-Wire Wiring Harness (incl. in RPO Z82)	—	—	X	X	X	X	X	—	—	—	—	X	X
Deadweight Hitch (incl. in RPO Z72)	X	X	—	—	—	—	—	X	X	—	—	—	—
Weight-Distributing Hitch Platform (incl. in RPO Z82)	—	—	X	X	X	X	X	—	—	—	—	X	X
Minimum Engine	—		—		—		—		—		—		
Std. 4.3L (262 Cu. In.) V6 EFI	LB4		LB4		—		—		—		—		
Opt. 5.0L (305 Cu. In.) V8 EFI	—		—		L03	L03	—	—	—	—	—	—	
Opt. 5.7L (350 Cu. In.) V8 EFI	—		L05	L05	L05	L05	L05	—	—	—	—	—	
Opt. 7.4L (454 Cu. In.) V8 EFI	—		—		—		L19	—	—	—	—	—	
Std. 6.2L (379 Cu. In.) V8 Diesel	—		—		—		—	LH6	LL4	LH6	LL4	LH6	LL4
Automatic Transmission <sup>2</sup>	MX0	MX1	MX0	MX1	MX0	MX0	MX1	MX0	MX1	MX0	MX1	MX0	MX1
Minimum Rear Axle Ratio (to 1) w/Minimum Engine (Gross Trailer Weight, lbs.)	3.42	3.73	3.42	3.73	3.08 (5000)	3.42 (6000)	—	—	—	—	—	—	—
	—	—	—	—	3.42 (6000)	3.73 (7000)	—	—	—	—	—	—	—
w/5.7L V8 Engine	—	—	—	—	3.08 (5500)	3.42 (6500)	3.73 (6500)	—	—	—	—	—	—
w/7.4L V8 Engine	—	—	—	—	3.42 (6500)	3.73 (7500)	4.10 (8000)	—	—	—	—	—	—
	—	—	—	—	—	—	3.73 (8500)	—	—	—	—	—	—
w/6.2L V8 Diesel	—	—	—	—	—	—	4.10 (10,000)	—	—	—	—	—	—
	—	—	—	—	—	—	—	3.42	3.73	3.42	3.73	3.73 (6000)	3.73 (5500)
	—	—	—	—	—	—	—	—	—	—	—	—	4.10 (6500)
Engine Oil Cooler (incl. in RPO Z82)	—	—	KC4	KC4	KC4	KC4	KC4	—	—	KC4	KC4	KC4	KC4
Transmission Oil Cooler (incl. in RPO Z82)	—	—	V02	V02	V02	V02	V02	—	—	V02	V02	V02	V02
Heavy-Duty Radiator	V05	V05	V05	V05	—	—	—	V05	V05	V05	V05	—	—
Electronic Speed Control and Comfortit Steering Wheel	—	—	ZQ3	ZQ3	ZQ3	ZQ3	ZQ3	—	—	ZQ3	ZQ3	ZQ3	ZQ3

<sup>1</sup> Maximum gross trailer weight includes all passengers and cargo in the Chevy Van/Vandura plus any cargo in the trailer. <sup>2</sup> MX0 = 4-speed with overdrive. MX1 = 3-speed.  
NOTE: Model and driveline combinations must be verified by your local dealer for correct emission equipment.

**HOW TO USE GCWRs TO DETERMINE POWERTRAIN AND REAR AXLE RATIO FOR TRAILERING**

Perhaps you prefer to use Gross Combination Weight Ratings (GCWRs) to determine the engine, transmission and rear axle ratio you will require to tow a special trailer with your truck. The chart below allows you to do just that. It shows you the maximum allowable GCWR based on all the available truck engines and rear axle

ratios with automatic or manual transmissions. The GCWR includes the total loaded weight of both the truck and trailer. Any available engine may be used for trailering if the GCWR shown is not exceeded. The trailer weight can be increased by 25% if the vehicle speed will not exceed 25 mph.

GROSS COMBINATION WEIGHT RATING (GCWR) Includes Weight of Both Truck and Trailer By Engine & Axle Ratio For Recreational Applications																				
With Automatic Transmission																				
GCWR (lb.)	6000	6500	7000	7500	8000	8500	9000	9500	10,000	10,500	11,000	11,500	12,000	12,500	13,500	14,000	14,500	15,000	16,000	19,000
Engines	Rear Axle Ratios																			
4.3L (262) V8 Gas								3.42	3.73											
5.0L (305) V8 Gas								3.08		3.42		3.73								
5.7L (350) V8 Gas									3.08		3.42		3.73		4.10					
6.2L (379) V8 Diesel							3.08		3.42		3.73		4.10							
7.4L (454) V8 Gas														3.73						4.10

When towing a trailer in excess of 3000 lbs. with a truck equipped with a 4-speed automatic transmission, it is recommended to shift to third gear range ("3") instead of overdrive ("0") for normal towing, and to manually downshift as required on uphill and downhill grades.  
Note: Model and driveline combinations must be verified by your local dealer for correct emissions equipment.

**GENERAL TRAILERING INFORMATION**

**AVAILABLE TRAILERING EQUIPMENT**

Chevrolet/GMC Truck offer a wide selection of available options for trailering and a few of them are described here.

**LIGHT-DUTY TRAILER HITCH**

For hauling trailers up to 2000 lbs. with a maximum tongue load of 200 lbs. A 1 7/8" -diameter ball is included. (Dealer-installed accessory. See chart for part numbers.)

**LOAD-DISTRIBUTING PLATFORM**

Required when towing trailers over 2000 lbs. Installs quickly and easily. (Dealer-installed accessory. See chart for part numbers.)

**WIRING HARNESSES**

5-wire used with trailers up to 2000 lbs. gross weight and 7-wire for larger trailers. Harnesses tie into vehicle's electrical system to give your trailer lights, plus electric brakes or battery charging. (See diagram for wiring color code.)

**HITCH BALLS**

1 7/8" -diameter ball is standard with light-duty hitches. It is also available as an accessory: Part No. 981148. A 2" -diameter ball is also available for hitches as Part No. 980670.

**DEALER-INSTALLED TRAILER HITCHES**

	Light Up to 2000 Lbs. 200-Lb. Tongue Load	Light/Medium Up to 2000-Lbs. 200-Lb. Tongue Load	Heavy Up to 6000-Lbs. 750-lb. Tongue Load	Heavy Up to 7000-Lbs. 850-Lb. Tongue Load
Type of Hitch	Deadweight <sup>1</sup>	Rear Step Bumper <sup>2</sup>	Weight-Distrib. Platform	Weight-Distrib. Platform
Chevy Van/Vandura	995742	995689-Painted	—	995745

<sup>1</sup> Deadweight hitch includes 1 7/8" ball. <sup>2</sup> 1 7/8" ball for step-type bumper—Part No. 981148. 2" ball for step-type bumper—Part No. 980670.

**MIRRORS**

Trucks used as tow vehicles will require outside mirrors with extensions that exceed the width of the trailer to be towed. Optional mirrors with larger mounting brackets are available with all truck models.

**TRUCK WIRING CODE**

The following color code for trucks should be used when installing trailer wiring harnesses.

- **Blue.** Used for electric trailer brakes or auxiliary wiring.
- **Red.** Used for battery charging. Connects to starter solenoid. (7-wire harness only).
- **Light Green.** Backup lights (7-wire harness only).
- **Brown.** Taillight and running lights.
- **Yellow.** Left stop and turn signal.
- **Dark Green.** Right stop and turn signal.
- **White.** Ground.

**COOLERS AND COOLING**

Trailering creates higher-than-normal temperatures in coolant, engine and transmission oil. To help control these temperatures, consider the following separate options.

**RPO V02.** This is an extra-capacity heavy-duty automatic transmission oil cooler option. (Included in RPO Z82 Trailering Special Package.)

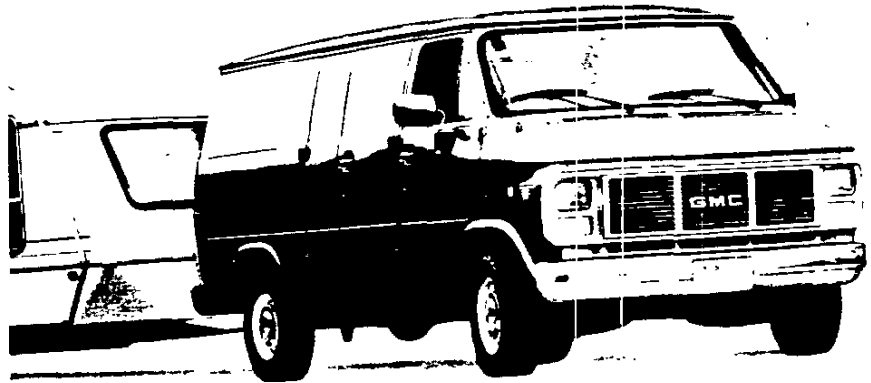
**RPO KC4.** This optional engine oil cooler circulates oil through a separate cooler mounted ahead of the radiator. (Included in RPO Z82 Trailering Package.)

**NOTE:** If the vehicle is equipped with a step bumper, the "V" shaped foot on the trailer tongue could dent your step bumper in a sharp turn. Before towing under these conditions, check the distance from the foot front edge to the center of the couple ball socket. If this dimension is less than 12 inches, remove the foot on the trailer or possible damage to the bumper could occur.

### TRAILERING SPECIAL PACKAGES

If you intend to tow a light trailer (up to 2000 lbs. gross weight) with your new Chevy Van/Vandura, a Trailering Special Package (RPO Z72) is highly recommended. RPO Z72 includes a deadweight hitch which is bolted to the rear bumper and undercarriage and includes a 1 7/8" diameter hitch ball. This package also includes a light-duty 5-wire wiring harness with a male-female connector and a pigtail that must be spliced to the trailer wiring harness. This allows the electrical system to activate trailer lights and other electrical systems.

If you intend to tow a medium trailer (up to 4000 lbs. gross weight) or a heavy trailer (up to 6000 lbs. gross weight), heavy-duty Trailering Special Package RPO Z82 is recommended for medium trailers and is a required option for heavy trailers. (This Z82 option is also required, regardless of gross trailer weight, if your trailer tongue weight exceeds 400 lbs.) RPO Z82 includes a weight-distributing platform hitch receiver which is bolted to the undercarriage and a heavy-duty 7-wire wiring harness that can be spliced into your special connector. With either trailering package, the wiring harness



comes coiled and taped. The harnesses will be located under the body at center rear.

See the chart below—Required/Recommended Trailering Equipment—for trailering options in addition to Trailering Special Packages.

The chart below indicates, in bold type, the trailering equipment required for light, medium

and heavy trailer towing. Additional recommended options are also indicated. To help you in ordering, each column lists Regular Production Option (RPO) numbers.

*Other important trailering information is available in the Owner's Manual of every 1990 Chevrolet/GMC Truck.*

### REQUIRED/RECOMMENDED TRAILERING EQUIPMENT

Trailer Classification	Gas-Powered Chevy Van/Vandura						Diesel-Powered Chevy Van/Vandura						
	Light		Medium		Heavy		Light		Medium		Heavy		
Maximum Gross Trailer Weight (lbs.) <sup>1</sup>	2000		4000		6500 7500 10,000		2000		4000		6000 6500		
Maximum Tongue Load (lbs.)	200		500		800 900 1000		200		500		750 800		
Truck Series	G10/1500 & G20/2500		G30/3500		G10/1500 & G20/2500		G30/3500		G10/1500 G20/2500		G30/3500		
Trailering Special Package	Z72		Z72		Z82 Z82		Z82 Z82		Z82 Z82		Z82 Z82		
5-Wire Wiring Harness (incl. in RPO Z72)	X	X	—	—	—	—	—	X	X	—	—	—	
7-Wire Wiring Harness (incl. in RPO Z82)	—	—	X	X	X	X	X	—	—	—	—	X	X
Deadweight Hitch (incl. in RPO Z72)	X	X	—	—	—	—	—	X	X	—	—	—	—
Weight-Distributing Hitch Platform (incl. in RPO Z82)	—	—	X	X	X	X	X	—	—	—	—	X	X
Minimum Engine	—		—		—		—		—		—		
Std. 4.3L (262 Cu. In.) V6 EFI	LB4		LB4		—		—		—		—		
Opt. 5.0L (305 Cu. In.) V8 EFI	—		—		L03 L03		—		—		—		
Opt. 5.7L (350 Cu. In.) V8 EFI	—		L05		L05 L05		L05		—		—		
Opt. 7.4L (454 Cu. In.) V8 EFI	—		—		—		L19		—		—		
Std. 6.2L (379 Cu. In.) V8 Diesel	—		—		—		—		LH6 LL4		LH6 LL4		
Automatic Transmission <sup>2</sup>	MX0	MX1	MX0	MX1	MX0	MX0	MX1	MX0	MX1	MX0	MX1	MX0	MX1
Minimum Rear Axle Ratio (to 1) w/Minimum Engine (Gross Trailer Weight, lbs.)	3.42 3.73		3.42 3.73		3.08 (5000) 3.42 (6000)		3.42 (6000) 3.73 (7000)		—		—		
w/5.7L V8 Engine	—		—		3.08 (5500) 3.42 (6500)		3.73 (6500)		—		—		
w/7.4L V8 Engine	—		—		3.42 (6500) 3.73 (7500)		4.10 (8000)		—		—		
w/6.2L V8 Diesel	—		—		—		3.73 (8500) 4.10 (10,000)		—		—		
	—		—		—		—		3.42 3.73		3.73 (6000) 3.73 (5500)		
	—		—		—		—		—		4.10 (6500)		
Engine Oil Cooler (incl. in RPO Z82)	—		KC4		KC4		KC4		—		KC4		
Transmission Oil Cooler (incl. in RPO Z82)	—		V02		V02		V02		—		V02		
Heavy-Duty Radiator	V05		V05		V05		V05		V05		V05		
Electronic Speed Control and Comfortilt Steering Wheel	—		ZQ3		ZQ3		ZQ3		—		ZQ3		

<sup>1</sup> Maximum gross trailer weight includes all passengers and cargo in the Chevy Van/Vandura plus any cargo in the trailer. <sup>2</sup> MX0 = 4-speed with overdrive. MX1 = 3-speed.  
NOTE: Model and driveline combinations must be verified by your local dealer for correct emission equipment.